

Bukti Korespondensi
Artikel Jurnal Internasional Bereputasi

Judul Artikel : Improvement on kNN using Genetic Algorithm and Combined Feature Extraction to Identify COVID-19 Sufferers based on CT-Scan Image
Jurnal : Telkomnika
Penulis : Radityo Adi Nugroho, Arie Sapta Nugraha, Aylwin Al Rasyid, Fenny Winda Rahayu

| No | Perihal | Tanggal |
|-----------|---|--------------------------|
| 1 | Submit Pertama Kali | 13 November 2020 |
| 2 | Pemberitahuan Revisi Minor | 24 Februari 2021 |
| 3 | Unggahan Revisi | 09 Maret 2021 |
| 4 | Pemberitahuan Penerimaan | 17 Maret 2021 |
| 5 | Pengiriman Bukti Transfer dan Similarity Report | 24 Maret 2021 |
| 6 | Auto Respon Terkait Pengiriman Bukti Transfer dan Similarity Report | 24 Maret 2021 |
| 7 | Revisi Layout | 16 Juli - 3 Agustus 2021 |
| 8 | Permintaan Proofreading | 24 Agustus 2021 |
| 9 | Pemberitahuan Terbit | 21 September 2021 |

1

**Submit Pertama Kali
13 November 2020**

[TELKOMNIKA] Submission Acknowledgement "Improvement on kNN using Genetic Algorithm and Combined Feature Extraction to Identify COVID-19 Sufferers based on CT-Scan Image"

Tole Sutikno <telkomnika@uad.ac.id>
To: "Mr. Radityo Adi Nugroho" <radityo.adi@ulm.ac.id>

Fri, Nov 13, 2020 at 1:09 PM

Dear Prof/Dr/Mr/Mrs: Mr. Radityo Adi Nugroho:

Thank you for submitting the manuscript, "Improvement on kNN using Genetic Algorithm and Combined Feature Extraction to Identify COVID-19 Sufferers based on CT-Scan Image" to TELKOMNIKA (Telecommunication Computing Electronics and Control). With the online journal management system that we are using, you will be able to track its progress through the editorial process by logging in to the journal web site:

Manuscript URL:

<http://journal.uad.ac.id/index.php/TELKOMNIKA/author/submission/18535> <---
number in this URL is your paper ID number

Username: ranugroho

If you have any questions, please contact me.

Thank you for considering this journal as a venue for your work.

Best Regards,
Tole Sutikno
TELKOMNIKA (Telecommunication Computing Electronics and Control)

The best journal in Indonesia 2017-2019 (by Ministry of Research
Technology and Higher Education) and indexed by SCOPUS, with SJR: 0.21,
CiteScore: 1.7
SNIP: 0.659, and Q3 on Electrical and Electronics Engineering.

----- Kindly forward this email to other interested parties!! -----

Our FREE OF CHARGE, OPEN ACCESS & PEER-REVIEWED journals:

- <http://ijres.iaescore.com>
- <http://ijra.iaescore.com>
- <http://ijaas.iaescore.com>
- <http://ijape.iaescore.com>
- <http://ijjct.iaescore.com>
- <http://iaesprime.com/index.php/csit>

TELKOMNIKA (Telecommunication Computing Electronics and Control)
<http://www.journal.uad.ac.id/index.php/TELKOMNIKA>

Improvement on kNN using Genetic Algorithm and Combined Feature Extraction to Identify COVID-19 Sufferers based on CT-Scan Image

Radityo Adi Nugroho, Arie Sapta Nugraha, Aylwin Al Rasyid, Fenny Winda Rahayu

Dept. of Computer Science, Faculty of Mathematics and Natural Sciences, Lambung Mangkurat University, Indonesia

Article Info

Article history:

Received mm dd, yyyy

Revised mm dd, yyyy

Accepted mm dd, yyyy

Keywords:

Haralick

Histogram

Local Binary Pattern

Genetic Algorithm

k-Nearest Neighbour

ABSTRACT

COVID-19 has spread throughout the world. The detection of this disease is usually carried out using the PCR-RT swab test. However, limited resources became an obstacle to carrying out the massive test. To solve this problem, CT-scan images used as one of the solutions to detect the sufferer. This technique has been used by researchers, but mostly using classifiers that require high resources, such as CNN. In this study, we proposed a way to classify the CT-Scan images by using the more efficient classifier, kNN, for images that are processed using a combination of these feature extraction methods, Haralick, Histogram, and Local Binary Pattern. In addition, Genetic Algorithm is also used for feature selection. The results showed that the proposed method was able to improve kNN performance, with the best accuracy of 93.30% for the combination of Haralick and Local Binary Pattern feature extraction, and the best AUC for the combination of Haralick, Histogram, and Local Binary Pattern with a value of 0.948. The best accuracy of our models also outperforms CNN by 4.3% margin.

This is an open access article under the [CC BY-SA](#) license.



Corresponding Author:

Radityo Adi Nugroho,

Departement of Computer Science,

Faculty of Mathematics and Natural Sciences, Lambung Mangkurat University,

Jl. A. Yani Km. 36, Kampus ULM Banjarbaru. Kalimantan Selatan - 70714

Email: radityo.adi@ulm.ac.id

1. INTRODUCTION

Recently, Indonesia is hit by the COVID-19 pandemic caused by the Corona virus (SARS-CoV-2). Since it was first announced by the government in March 2020, this virus has continued to spread to various provinces in Indonesia and has infected hundreds of thousands of people. South Kalimantan, a province in Indonesia, is one of the areas with the highest infection rates in Indonesia. One of the factors that caused the high number of patients was the delay in the identification process of the PCR-RT swab test due to the large number of specimens that had to be examined by the laboratory. This makes the test results known 14 days after the test is carried out.

[1] states that the PCR (Polymerase Chain Reaction) is a sample test by taking samples from places where the virus is most likely to be present, such as the back of the nose or mouth or deep in the lungs. The PCR test was also declared by WHO as the golden standard for detecting the presence of COVID-19 in humans.

Although known for its effectiveness, PCR testing is not the only way. [2] stated that the CT Scan (Computerized Tomography Scan) is more accurate than the PCR swab test in early detection of COVID-19. [3, 4, 5] identify sufferers of COVID-19 through CT-Scan images. They use the Convolutional Neural Network (CNN) method to classify positive and negative COVID-19 patients with an accuracy rate of more than 90%.

According to [6], Convolutional Neural Network or CNN is a type of neural network for processing data that has a network-like topology. CNN is widely used in computer vision, as is done by [7, 8, 9, 10]. Despite having various advantages, CNN is a method that requires enormous computational resources [11]. However, in Machine Learning there are still many other classification algorithms that can be used with low resources, one of which is kNN (k Nearest Neighbor).

The kNN algorithm was formulated by performing a non-parametric method for pattern classification [12]. kNN also stated as simple but effective algorithm for several cases [13]. The success of the kNN algorithm depends on selecting the correct k value. In this study, we used the KNN algorithm to identify sufferers of COVID-19 based on CT-Scan images. This image was collected from Tongji Hospital in Wuhan, China [4].

Before the data mining process is carried out, the obtained CT-Scan image is extracted based on texture in order to obtain its characteristic values. Feature extraction in images is divided into several categories, namely color, texture, and shape [14]. Texture-based feature extraction is known to have advantages, namely it has low computational complexity and is easy to implement [15]. The feature extraction methods used in this study are Haralick, Local Binary Pattern, and 32-bin Histogram.

One of the challenges in this study is that the feature extraction results in each method have a large number of features. This can cause a Curse of Dimensionality so that the accuracy generated by the classification algorithm decreases [16]. To overcome this weakness, [17] suggested the use of feature selection. Feature selection is the process of selecting the most significant features from a particular data set. In many cases, feature selection can also improve the performance of a machine learning model.

One type of feature selection is wrapper [18]. The wrapper makes use of a machine learning algorithm to evaluate all possible combinations of features and select the combination that produces the best results for that machine learning algorithm. The wrapper method determines the best feature combination by comparing the evaluation criteria determined from various feature combinations, then from the comparison results select the feature combination that has the most optimal results. One algorithm that can be used to perform wrapper-based feature selection is Genetic Algorithm, as has been done by [19, 20, 21].

In this study, k-Nearest Neighbor with Genetic Algorithm was used as a feature selection in classifying COVID-19 sufferers through CT Scan images extracted using Haralick method, 32-bin Histogram, and Local Binary Pattern.

2. RESEARCH METHOD

Our research was carried out as in Figure 1.

2.1 Dataset

The dataset used in this study is the CT-Scan dataset compiled by [4]. There are 746 grayscale images consisting of 349 CT scans of COVID-19 patients and 397 non-COVID-19 patients in *.jpg and *.png formats.

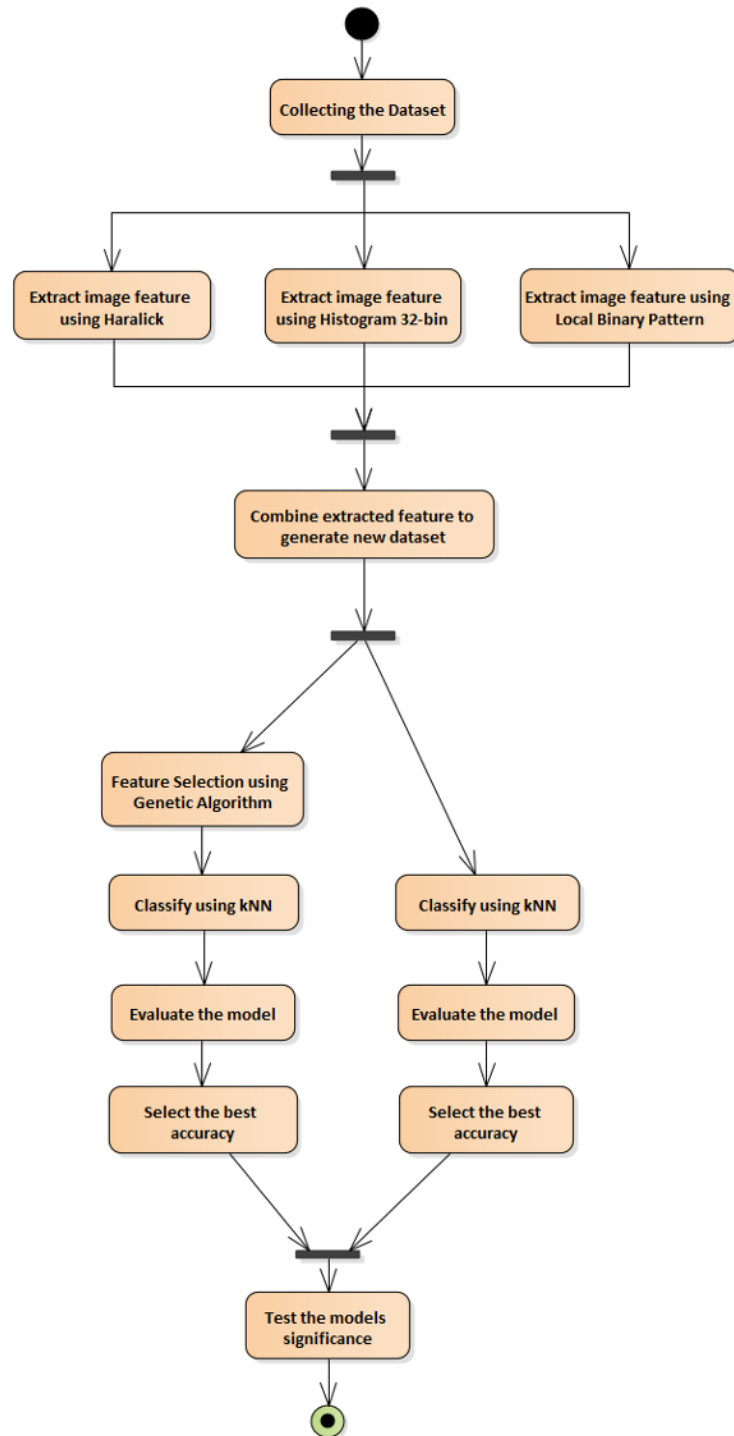


Figure 1. Proposed method abstraction design

2.2 Feature Extraction

Before entering the classification stage, the features of the downloaded dataset are extracted using Haralick method, 32-bin Histogram, and Local Binary Pattern. At this stage each image is converted into a number matrix. The first feature extraction is Haralick. This feature contains information about the intensity of the image in pixels with certain positions in relation to each other occurring simultaneously [22]. This method calculates its feature value from 4 angles, namely 0, 90, 180, 360. Each angle produces 14 features using the formula in Table 1. Thus, each image will produce 4 x 14 features. Then, simplification is carried out by calculating the average value of each corner feature in each image, so that the number of features for each image becomes 14 features.

The next extraction method is Histogram. An image histogram is a graphical representation of the number of pixels in an image as a function of their intensity. The values formed in each image are grouped into 32 value ranges. So, in this step 32 features are generated

The third feature extraction is Local Binary Pattern. This method is a simple but very efficient texture operator that labels image pixels by limiting the environment of each pixel and considers the result to be a binary number [23]. Then, the label histogram can be used as a texture descriptor. The number of features produced by this method is 25 features.

Table 1. Haralick's Feature and its Formula

| No | Features | Formula |
|----|-------------------------------|---|
| 1 | Angular Second Moment | $\sum_i \sum_j p(i, j)^2$ |
| 2 | Contrast | $\sum_{n=0}^{Ng-1} n^2 \{ \sum_{i=1}^{Ng} \sum_{j=1}^{Ng} p(i, j) \}, i - j = n$ |
| 3 | Correlation | $\frac{\sum_i \sum_j (ij) p(i, j) - \mu_x \mu_y}{\sigma_x \sigma_y}$ |
| 4 | Sum of Squares: Variance | $\sum_i \sum_j (i - \mu)^2 p(i, j)$ |
| 5 | Inverse Difference Moment | $\sum_i \sum_j \frac{1}{1 + (i - j)^2} p(i, j)$ |
| 6 | Sum Average | $\sum_{i=2}^{2Ng} i p_{x+y}(i)$ |
| 7 | Sum Variance | $\sum_{i=2}^{2Ng} (i - f_8)^2 p_{x+y}(i)$ |
| 8 | Sum Entropy | $-\sum_{i=2}^{2Ng} p_{x+y}(i) \log \{ p_{x+y}(i) \} = f_8$ |
| 9 | Entropy | $-\sum_i \sum_j p(i, j) \log (p(i, j))$ |
| 10 | Difference Variance | $\sum_{n=0}^{Ng-1} i^2 p_{x-y}(i)$ |
| 11 | Difference Entropy | $-\sum_{n=0}^{Ng-1} p_{x-y}(i) \log \{ p_{x-y}(i) \}$ |
| 12 | Info. Measure of Collection 1 | $\frac{HXY - HXY1}{\max \{HX, HY\}}$ |
| 13 | Info. Measure of Collection 2 | $(1 - \exp [-2(HXY2 - HXY)])^{\frac{1}{2}}$ |
| 14 | Max. Correlation Coefficient | <i>The square root of the second largest eigenvalue of Q,</i> where $Q(i, j) = \sum_k \frac{p(i, k) p(j, k)}{p_x(i) p_y(k)}$ |

2.3 Generate New Dataset

This stage is the formation of a new dataset by combining the features formed in 2.2. At this stage, 7 new datasets are generated which are described in Table 2.

Table 2. Detail of new Datasets

| Dataset | Num of Feature | |
|----------------|----------------|--|
| Har | 14 | Formed from Haralick extraction |
| Hist32 | 32 | Formed from Histogram extraction |
| LBP | 25 | Formed from Local Binary Pattern extraction |
| Har+Hist32 | 46 | Combination of Haralick & Histogram 32bin |
| Har+LBP | 39 | Combination of Haralick & Local Binary Pattern |
| Hist32+LBP | 57 | Combination of Histogram 32bin & Local Binary Pattern |
| Har+Hist32+LBP | 71 | Combination of Haralick, Histogram 32bin, & Local Binary Pattern |

2.4 Classification and Cross Validation

At this stage, the dataset formed in Table 2 is classified using the k-Nearest Neighbor algorithm and validated using 10-Fold Cross Validation. The kNN classification is carried out with a value of k=2 to k=17. The value of k=1 was not included because of the high variance [24].

2.4.1 Classification Without Feature Selection (kNN Only)

This classification involves all the features that are formed from Table 2.

2.4.2 Classification using Genetic Algorithm Feature Selection (GA+kNN)

Each dataset in Table 2 is created a new data subset containing only the features selected by the Genetic Algorithm. This algorithm works as follows [25]:

Step 1: Initialize random individual populations

Step 2: Assign fitness values for each individual in the population

Step 3: Make individual selections on the population to create new generation

Step 4: Perform crossovers on the selected individuals

Step 5: Perform mutations to avoid similarity in the generation of results crossover and parent population

Step 6: Repeat step 2 - step 5 until the stop criteria are met.

2.5 Evaluation

At this stage, the performance of the kNN algorithm is evaluated based on its accuracy and AUC value. The higher the accuracy and AUC, the better the performance of the model.

2.6 Significance Test

This stage uses the t-test method to test the significance of each of the best values produced by kNN and AG+kNN for each dataset in Table 2. With alpha value = 0.05, means that the significance value of kNN and GA+kNN is less than 0.05 ($p\text{-value} < \alpha$) indicates the two models can be said to be significantly different.

3. RESULT AND ANALYSIS

At this stage, the best accuracy for the k-NN model is compared with the best for the GA+kNN model. Then, to show that the best accuracy of the two models has a statistically significant difference, a different test is performed using the t-test. The test results can be seen in Table 3. From the significance test, it can be seen that, although not all produce significant differences, the results obtained are the proposed method (GA+kNN) outperforming kNN.

Genetic Algorithm has been shown to improve the performance of the kNN classification in images extracted with Haralick, LBP, and Har+LBP. The best overall accuracy results were achieved by GA+kNN on the Haralick+LBP feature extraction. In addition, the best AUC value is also generated by GA+kNN on Haralick+32-bin Histogram+LBP dataset.

Table 3. Results of the best accuracy and its t-test

| No | Dataset | Best Accuracy kNN | | | Best Accuracy GA+kNN | | | Best Accuracy t-Test ($\alpha = 0,05$) |
|----|----------------|-------------------|----------|-------|----------------------|---------------|--------------|--|
| | | k | Accuracy | AUC | k | Accuracy | AUC | |
| 1 | Har | 15 | 79.10% | 0.835 | 13 | 83.70% | 0.896 | Significant |
| 2 | Hist32 | 2 | 90.90% | 0.936 | 2 | 91.80% | 0.935 | Not Significant |
| 3 | LBP | 4 | 81.00% | 0.859 | 2 | 89.00% | 0.901 | Significant |
| 4 | Har+Hist32 | 2 | 90.62% | 0.933 | 2 | 92.23% | 0.937 | Not Significant |
| 5 | Har+LBP | 2 | 84.60% | 0.868 | 2 | 93.30% | 0.937 | Significant |
| 6 | Hist32+LBP | 2 | 91.55% | 0.942 | 2 | 92.63% | 0.94 | Not Significant |
| 7 | Har+Hist32+LBP | 2 | 91.16% | 0.926 | 2 | 92.76% | 0.948 | Not Significant |

To determine the effectiveness of the model, we compare the best accuracy GA+kNN with the CNN model produced by [4] as in Table 4. It can be seen that the Yang model excels in the AUC score, while the our proposed model is superior in terms of accuracy.

Table 4. GA+kNN comparison against CNN Yang's model

| Yang, <i>et al</i> (2020) | | Proposed Model (GA+kNN) | |
|---------------------------|------|-------------------------|-------|
| Accuracy | AUC | Accuracy | AUC |
| 89% | 0.98 | 93.30% | 0.937 |

4. CONCLUSION

From the research conducted, proved that the model built using Genetic Algorithm (GA+kNN) on combined of Haralick and Local Binary Pattern feature extraction was able to improve the performance of the





kNN classification algorithm and produce the best accuracy with a value of 93.30% and AUC of 0.937. In addition, the machine learning model produced is also able to provide excellent results in detecting COVID-19 sufferers based on CT-Scan images. This is evidenced by the accuracy of GA+kNN that outperforms the CNN Yang model, which was formed by identical dataset.

REFERENCES

- [1] J. Hadaya, M. Schumm, and E. H. Livingston, "Testing Individuals for Coronavirus Disease 2019 (COVID-19)", *Jama*, vol. 323, no. 19, p. 1981, 2020
- [2] T. Ai, Z. Yang, H. Hou, C. Zhan, C. Chen, W. Lv, Q. Tao, Z. Sun, and L. Xia, "Correlation of Chest CT and RT-PCR Testing for Coronavirus Disease 2019 (COVID-19) in China: A Report of 1014 Cases", *Radiology*, vol. 296, no. 2, 2020.
- [3] D. Singh, V. Kumar, Vaishali, and M. Kaur, "Classification of COVID-19 patients from chest CT images using multi-objective differential evolution-based convolutional neural networks", *European Journal of Clinical Microbiology & Infectious Diseases*, vol. 39, no. 7, pp. 1379–1389, 2020.
- [4] Yang, X., He, X., Zhao, J., Zhang, Y., Zhang, S., and Xie, P., "COVID-CT-Dataset: A CT Scan Dataset about COVID-19", *arXiv e-prints*, 2020.
- [5] A. I. Khan, J. L. Shah, and M. M. Bhat, "CoroNet: A deep neural network for detection and diagnosis of COVID-19 from chest x-ray images", *Computer Methods and Programs in Biomedicine*, vol. 196, p. 105581, 2020.
- [6] I. Goodfellow, Y. Bengio, and A. Courville, *Deep learning*. Cambridge, MA: The MIT Press, 2016.
- [7] T. Shanthi, R. Sabeenian, and R. Anand, "Automatic diagnosis of skin diseases using convolution neural network", *Microprocessors and Microsystems*, vol. 76, p. 103074, 2020.
- [8] D. Liu, Z. Jia, M. Jin, Q. Liu, Z. Liao, J. Zhong, H. Ye, and G. Chen, "Cardiac magnetic resonance image segmentation based on convolutional neural network", *Computer Methods and Programs in Biomedicine*, vol. 197, p. 105755, 2020.
- [9] E. Pérez, O. Reyes, and S. Ventura, "Convolutional neural networks for the automatic diagnosis of melanoma: An extensive experimental study", *Medical Image Analysis*, vol. 67, p. 101858, 2021.
- [10] Z.-J. Lu, Q. Qin, H.-Y. Shi, and H. Huang, "SAR moving target imaging based on convolutional neural network", *Digital Signal Processing*, vol. 106, p. 102832, 2020.
- [11] P. Maji and R. Mullins, "On the Reduction of Computational Complexity of Deep Convolutional Neural Networks", *Entropy*, vol. 20, no. 4, p. 305, 2018.
- [12] E. Fix and J. L. Hodges, "Discriminatory Analysis. Nonparametric Discrimination: Consistency Properties", *International Statistical Review / Revue Internationale de Statistique*, vol. 57, no. 3, p. 238, 1989.
- [13] H. Wang, I. Düntsch, G. Gediga, and G. Guo, "Nearest Neighbours without k", *Advances in Soft Computing Monitoring, Security, and Rescue Techniques in Multiagent Systems*, pp. 179–189, 2003
- [14] R. Kumar and Sree Kumar, "A Survey on Image Feature Descriptors", *International Journal of Computer Science and Information Technologies*, vol. 5, 2014.
- [15] A. Humeau-Heurtier, "Texture Feature Extraction Methods: A Survey", *IEEE Access*, vol. 7, pp. 8975–9000, 2019.
- [16] R. Bellman, *Dynamic programming*. Princenton: Princenton University Press, 1957.
- [17] A. Jain and D. Zongker, "Feature selection: evaluation, application, and small sample performance", *IEEE Transactions on Pattern Analysis and Machine Intelligence*, vol. 19, no. 2, pp. 153–158, 1997.
- [18] G. Chandrashekar and F. Sahin, "A survey on feature selection methods", *Computers & Electrical Engineering*, vol. 40, no. 1, pp. 16–28, 2014.
- [19] R. S. Wahono and N. S. Herman, "Genetic Feature Selection for Software Defect Prediction", *Advanced Science Letters*, vol. 20, no. 1, pp. 239–244, 2014.
- [20] S. Jadhav, H. He, and K. Jenkins, "Information gain directed genetic algorithm wrapper feature selection for credit rating", *Applied Soft Computing*, vol. 69, pp. 541–553, 2018.

- [21] S. Sayed, M. Nassef, A. Badr, and I. Farag, “A Nested Genetic Algorithm for feature selection in high-dimensional cancer Microarray datasets”, *Expert Systems with Applications*, vol. 121, pp. 233–243, 2019.
- [22] R. M. Haralick, K. Shanmugam, and I. Dinstein, “Textural Features for Image Classification”, *IEEE Transactions on Systems, Man, and Cybernetics*, vol. SMC-3, no. 6, pp. 610–621, 1973.
- [23] T. Ahonen, A. Hadid, and M. Pietikainen, “Face Description with Local Binary Patterns: Application to Face Recognition”, *IEEE Transactions on Pattern Analysis and Machine Intelligence*, vol. 28, no. 12, pp. 2037–2041, 2006.
- [24] T. Hastie, J. Friedman, and R. Tibshirani, *The Elements of statistical learning: data mining, inference, and prediction*. New York: Springer, 2017.
- [25] R. Leardi, “Application of a genetic algorithm to feature selection under full validation conditions and to outlier detection”, *Journal of Chemometrics*, vol. 8, no. 1, pp. 65–79, 1994.

BIOGRAPHIES OF AUTHORS (10 PT)

| | |
|---|--|
|  | <p>Radityo Adi Nugroho is an Assistant Professor in the Department of Computer Science at Lambung Mangkurat University. His research interests include Software Defect Prediction, and Computer Vision.</p> |
|  | <p>Arie Sapta Nugraha is an undergraduate student in the Department of Computer Science at the Lambung Mangkurat University and will be graduating in 2021. Arie has a strong interest in the field of Machine Learning and Software Engineering.</p> |
|  | <p>Fenny Winda Rahayu is an undergraduate student of the Computer Science Department, Faculty of Mathematics and Natural Sciences, Lambung Mangkurat University. Fenny has an interest in Software Engineering and Systems Programming</p> |
|  | <p>Aylwin Al Rasyid is an undergraduate student of the Computer Science Department, Faculty of Mathematics and Natural Sciences, Lambung Mangkurat University. Aylwin has interest in Software Engineering and Systems Programming. Besides that, Aylwin also has an interest in UI/UX design.</p> |

2

**Pemberitahuan Revisi Minor
24 Februari 2021**

[TELKOMNIKA] Editor Decision - ACCEPTED with minor revisions

Tole Sutikno <telkomnika@ee.uad.ac.id>

Wed, Feb 24, 2021 at 5:50 PM

Reply-To: "Assoc. Prof. Dr. Tole Sutikno" <telkomnika@ee.uad.ac.id>

To: "Mr. Radityo Adi Nugroho" <radityo.adi@ulm.ac.id>

- Number of min references for research paper is 25 references
- (and min 20 recently journal articles)
- Adhere every detail of the guide of authors
(<http://iaescore.com/gfa/telkomnika.docx>)

Dear Prof/Dr/Mr/Mrs: Mr. Radityo Adi Nugroho,

It is my great pleasure to inform you that your paper entitled "Improvement on kNN using Genetic Algorithm and Combined Feature Extraction to Identify COVID-19 Sufferers based on CT-Scan Image" to TELKOMNIKA (Telecommunication Computing Electronics and Control), (a SCOPUS/ScimagoJR indexed journal, SJR: 0.21, CiteScore: 1.7, SNIP: 0.659) has been ACCEPTED with minor revisions. Please prepare your final paper (in MS Word file format) adheres every detail of the guide of authors (<http://iaescore.com/gfa/telkomnika.docx>), and check it for spelling/grammatical mistakes. The Editors will check whether the revision already address the reviewers' comments. Failing to do proper revision may lead to the rejection of your paper.

Please submit your final paper within 8 weeks by uploading to our online system (at same paper ID, as author version under our decision)

I look forward for your response

Sincerely yours,
Assoc. Prof. Dr. Tole Sutikno
Universitas Ahmad Dahlan
telkomnika@ee.uad.ac.id

=====

**** PLEASE PAY ATTENTION! ****

TELKOMNIKA Telecommunication, Computing, Electronics and Control is a Scopus indexed leading journal. This journal ONLY publishes high quality papers. A high quality paper MUST has: 1) a clear statement of the problem the paper is addressing; 2) the proposed solution(s); and 3) results achieved. It describes clearly what has been done before on the problem, and what is NEW. The goal of your final camera ready paper is to describe NOVEL TECHNICAL RESULTS.

Update title of your paper!! The title summarizes the main idea or ideas of your study (title is "summary" and "essence" of your paper). Title should be "encompassing" as well as "descriptive". A good title contains the fewest possible words needed to adequately describe the content and/or purpose of your research paper. Rarely use abbreviations or acronyms unless they are commonly known. Find the below guide, how to update your paper title.

For original research paper, there are four (4) types of novel technical results: 1) An algorithm; 2) A system construct: such as hardware design, software system, protocol, etc.; The main goal of your revised paper is to

ensure that the next person who designs a system like yours doesn't make the same mistakes and takes advantage of some of your best solutions. So make sure that the hard problems (and their solutions) are discussed and the non-obvious mistakes (and how to avoid them) are discussed; 3) A performance evaluation: obtained through analyses, simulation or measurements; or 4) A theory: consisting of a collection of theorems. Your final camera ready paper should focus on: 1) Describing the results in sufficient details to establish their validity; 2) Identifying the novel aspects of the results, i.e., what new knowledge is reported and what makes it non-obvious; and 3) Identifying the significance of the results: what improvements and impact do they suggest. Number of minimum references for original research paper is 25 references (and minimum 20 recently journal articles).

For review paper, the paper should present a critical, constructive analysis of the literature in a specific field through summary, classification, analysis and comparison. The function and goal of the review paper is: 1) to organize literature; 2) to evaluate literature; 3) to identify patterns and trends in the literature; 4) to synthesize literature; or 5) to identify research gaps and recommend new research areas. The structure includes:

1. Title – in this case does not indicate that it is a review article.
2. Abstract – includes a description of subjects covered.
3. Introduction includes a description of context (paragraph 1 – 3), motivation for review (paragraph 4, sentence 1) and defines the focus (paragraph 4, sentences 2 – 3)
4. Body – structured by headings and subheadings
5. Conclusion – states the implications of the findings and an identifies possible new research fields
6. References (“Literature Review”) – organised by number in the order they were cited in the text.

Number of minimum references for review paper is 50 references (and minimum 40 recently journal articles).

Prepare your abstract in single paragraph and within 200 words. You need to summarize your contribution, idea, findings/results, and describe implications of the findings. Without abbreviations, footnotes, or references. Without mathematical equations, diagram or tabular material. It is suggested to present your abstract included the elements: 1) state the primary objective of the paper; 2) highlight the merits (or contribution; 3) give a conceptual idea on the method; 4) describe the research design and procedures/processes employed (is it simulation, experimental, survey etc.); 5) give the main outcomes or results, and the conclusions that might be drawn; and 6) include any implications for further research or application/practice, if any.

Please refer to <https://bit.ly/35R6JTs> and <https://bit.ly/2DxU9MI> for further guidelines

Your final camera ready paper should reflect a careful consideration of the following criteria:

1. Analysis: your revised paper should demonstrate a clear understanding of the key issues related to your topic of choice. The paper should display analysis and not mere summary of the topic under consideration. It should also include evidence to support arguments where necessary.
2. Connections: your paper should demonstrate a connection of the references you mention to the central topic and to each other where necessary throughout the paper.
3. Mechanics: this includes attention to punctuation, grammatical soundness and your submissions being checked for spellings errors.
4. Formatting: adhere the new guide of authors (<http://iaescore.com/gfa/telkomnika.docx>)

Guideline for preparing your paper title:

A good research paper title: (1) Condenses the paper's content in a few words & Use words that create a positive impression and stimulate reader

interest; (2) Captures the readers' attention; (3) Indicate accurately the subject and scope of the study and Differentiates the paper from other papers of the same subject area. Five (5) Simple steps to write a good research paper title:

STEP 1: Ask yourself these questions and make note of the answers:

- What is my paper about?
- What techniques/ designs were used?
- Who/what is studied?
- What were the results?

STEP 2: Use your answers to list key words.

STEP 3: Create a sentence that includes the key words you listed

STEP 4: Delete all unnecessary/ repetitive words and link the remaining.

STEP 5: Delete non-essential information and reword the title.

General Guidelines:

1. Please re-read our instructions (at:

<http://journal.uad.ac.id/index.php/TELKOMNIKA/about/editorialPolicies#custom-1>)

carefully and follow the checklist strictly, as any spelling mistakes and errors may be translated into the typeset version.

2. The "result and discussion" section reports the most important findings, including analysing results as appropriate. It is very important to prove that your manuscript has a significant value and not trivial.

3. Please re-check that all references are already cited in your article, and order of your citation is SEQUENTIAL

example in a paper:

—> [1-4], [2], [5-6], [7-9], [8], [4-5], [9], [10-14], [12], [15]

(SEQUENTIAL) — correct

—> [1], [2], [3], [4-6], [7], [8-10], [4-5], [11-16], [13], [17]

(SEQUENTIAL) — correct

—> [2], [3], [6], [1], [4-5], [7], [11-16], [8-10], [13], [17]

(NOT SEQUENTIAL) — INCORRECT

—> [4-5], [7], [2], [3], [17], [6], [1], [11-16], [8-10], [13]

(NOT SEQUENTIAL) — INCORRECT

Reviewer A:

Ethics (Plagiarism, Fraud, Other ethical concerns)

- If you suspect that an article is a substantial copy of another work, please let the editor know, citing the previous work in as much detail as possible.

- It is very difficult to detect the determined fraudster, but if you suspect the results in an article to be untrue, inform it

- Has there been a violation of the accepted norms in the ethical?

Please provide your detailed comments to the Author(s) on the following.:

1. Uptodate references
2. Accuracy and reliability issue.
3. Have the results verified by experiment?
4. How accurate and reliable the if the software you used?
5. Dont start sentence with references.

Does the title of the paper accurately reflect the major focus contribution of this paper?:

Yes

If No, please suggest change of the title as appropriate within 10 words:

1. Uptodate references
2. Accuracy and reliability issue.
3. Have the results verified by experiment?
4. How accurate and reliable the if the software you used?
5. Dont start sentence with references.

Is the abstract an appropriate and adequate digest of the work?:

Yes

Is the paper clear, concise, and well organized?:

Yes

Structure and Presentation (Layout and format, Title, Abstract, Introduction, Method, Results and Discussion, Conclusion, Language). Please provide your detailed comments to the Author(s) on the following:

1. Uptodate references
2. Accuracy and reliability issue.
3. Have the results verified by experiment?
4. How accurate and reliable the if the software you used?
5. Dont start sentence with references.

Do authors place the paper in proper context by citing relevant papers? Is the paper free from obvious errors, misconceptions, or ambiguity? Is the paper written in correct English? Please note grammatical errors and suggest corrections:

1. Uptodate references
2. Accuracy and reliability issue.
3. Have the results verified by experiment?
4. How accurate and reliable the if the software you used?
5. Dont start sentence with references.

Previous Research: If the article builds upon previous research does it reference that work appropriately? Are there any important works that have been omitted? Are the references accurate? Do authors place the paper in proper context by citing relevant papers? Please provide your detailed comments to the Author(s) on the following.:

1. Uptodate references
2. Accuracy and reliability issue.
3. Have the results verified by experiment?
4. How accurate and reliable the if the software you used?
5. Dont start sentence with references.

Rate of the contribution strength to the field and the scientific quality is represented in this paper?:

Good

Please mark appropriate scale for the overall grade for this paper?:

Good

Reviewer's comments and suggestions how to improve the paper. (If it is not possible, kindly please use separate sheets or a copy of the paper for comments and suggestions for revision. Indicate whether revisions are mandatory or suggested. Please use word processing type format if possible, and then upload in next step or submit via email: telkonnika@uad.ac.id)

URGENT: Authors should consider all above items for preparing their revision (and NOT only the below comments)

:

1. Uptodate references
2. Accuracy and reliability issue.
3. Have the results verified by experiment?
4. How accurate and reliable the if the software you used?
5. Dont start sentence with references.

Reviewer B:

Ethics (Plagiarism, Fraud, Other ethical concerns)

- If you suspect that an article is a substantial copy of another work, please let the editor know, citing the previous work in as much detail as

possible.

- It is very difficult to detect the determined fraudster, but if you suspect the results in an article to be untrue, inform it

- Has there been a violation of the accepted norms in the ethical?

Please provide your detailed comments to the Author(s) on the following.:

ethics ok no problem

Does the title of the paper accurately reflect the major focus contribution of this paper?:

Yes

If No, please suggest change of the title as appropriate within 10 words:

Is the abstract an appropriate and adequate digest of the work?:

Yes

Is the paper clear, concise, and well organized?:

Yes

Structure and Presentation (Layout and format, Title, Abstract, Introduction, Method, Results and Discussion, Conclusion, Language). Please provide your detailed comments to the Author(s) on the following:

structure ok,

Do authors place the paper in proper context by citing relevant papers? Is the paper free from obvious errors, misconceptions, or ambiguity? Is the paper written in correct English? Please note grammatical errors and suggest corrections:

it's ok

Previous Research: If the article builds upon previous research does it reference that work appropriately? Are there any important works that have been omitted? Are the references accurate? Do authors place the paper in proper context by citing relevant papers? Please provide your detailed comments to the Author(s) on the following.:

There needs to be a comparison after the study literature, a comparison between the weaknesses of previous research and those that will be done, and any changes or developments from previous methods

Rate of the contribution strength to the field and the scientific quality is represented in this paper?:

Good

Please mark appropriate scale for the overall grade for this paper?:

Good

Reviewer's comments and suggestions how to improve the paper. (If it is not possible, kindly please use separate sheets or a copy of the paper for comments and suggestions for revision. Indicate whether revisions are mandatory or suggested. Please use word processing type format if possible, and then upload in next step or submit via email: telkonnika@uad.ac.id)

URGENT: Authors should consider all above items for preparing their revision (and NOT only the below comments)

:

There needs to be a comparison after the study literature, a comparison between the weaknesses of previous research and those that will be done, and any changes or developments from previous methods

Reviewer E:

Ethics (Plagiarism, Fraud, Other ethical concerns)

- If you suspect that an article is a substantial copy of another work, please let the editor know, citing the previous work in as much detail as possible.

- It is very difficult to detect the determined fraudster, but if you suspect the results in an article to be untrue, inform it

- Has there been a violation of the accepted norms in the ethical?

Please provide your detailed comments to the Author(s) on the following.:

Does the title of the paper accurately reflect the major focus contribution of this paper?:

Yes

If No, please suggest change of the title as appropriate within 10 words:

Is the abstract an appropriate and adequate digest of the work?:

Yes

Is the paper clear, concise, and well organized?:

Yes

Structure and Presentation (Layout and format, Title, Abstract, Introduction, Method, Results and Discussion, Conclusion, Language). Please provide your detailed comments to the Author(s) on the following:

Do authors place the paper in proper context by citing relevant papers? Is the paper free from obvious errors, misconceptions, or ambiguity? Is the paper written in correct English? Please note grammatical errors and suggest corrections:

Previous Research: If the article builds upon previous research does it reference that work appropriately? Are there any important works that have been omitted? Are the references accurate? Do authors place the paper in proper context by citing relevant papers? Please provide your detailed comments to the Author(s) on the following.:

Rate of the contribution strength to the field and the scientific quality is represented in this paper?:

Average

Please mark appropriate scale for the overall grade for this paper?:

Average

Reviewer's comments and suggestions how to improve the paper. (If it is not possible, kindly please use separate sheets or a copy of the paper for comments and suggestions for revision. Indicate whether revisions are mandatory or suggested. Please use word processing type format if possible, and then upload in next step or submit via email: telkonnika@uad.ac.id)

URGENT: Authors should consider all above items for preparing their revision (and NOT only the below comments)

:

The paper presents an interesting way to improve KNN classification using genetic algorithms. The application is detection of COVID patients using C-SCAN images. The results are highly relevant for the literature and the scientific community. However, the authors must place more effort in detailing the technical and theoretical background of the equations places in table 1. There is no introduction to the symbols in the formulae in this

table. So, it is a little bit irrelevant for the general reader this information if there is no more description on what the symbols and formulae mean for the intended application.

TELKOMNIKA (Telecommunication Computing Electronics and Control)
<http://www.journal.uad.ac.id/index.php/TELKOMNIKA>

3

**Unggahan Revisi
09 Maret 2021**

Home > User > Author > Submissions > #18535 > Review

#18535 Review

SUMMARY **REVIEW** EDITING

Submission

| | |
|---------|--|
| Authors | Radityo Adi Nugroho, Arie Sapta Nugraha, Aylwin Al Rasyid, Fenny Winda Rahayu |
| Title | Improvement on KNN using genetic algorithm and combined feature extraction to identify COVID-19 sufferers based on CT scan image |
| Section | Machine Learning, AI and Soft Computing |
| Editor | Saleem Abdullah (Review) Alex Pappachen James (Review) Huchang Liao (Review) Luis Paulo Reis (Review) Khader Shameer (Review) Zita Vale (Review) Longquan Yong (Review) |

Peer Review

Round 1

| | |
|----------------|--|
| Review Version | 18535-48952-1-RV.DOCX 2020-11-13 |
| Initiated | 2020-11-19 |
| Last modified | 2021-02-24 |
| Uploaded file | None |

Editor Decision

| | |
|-----------------------|---|
| Decision | Accept Submission 2021-03-17 |
| Notify Editor | Editor/Author Email Record 2021-03-17 |
| Editor Version | None |
| Author Version | 18535-53026-1-ED.DOCX 2021-03-09 DELETE |
| Upload Author Version | <input type="text" value="Choose File no file selected"/> <input type="button" value="Upload"/> |

TELKOMNIKA Telecommunication, Computing, Electronics and Control
ISSN: 1693-6930, e-ISSN: 2302-9293
[Universitas Ahmad Dahlan](#), 4th Campus
Jl. Ringroad Selatan, Kragilan, Tamanan, Banguntapan, Bantul, Yogyakarta, Indonesia 55191
Phone: +62 (274) 563515, 511830, 379418, 371120
Fax: +62 274 564604

04577934

[View TELKOMNIKA Stats](#)

USER

You are logged in as...

ranugroho

- My Profile
- Log Out

QUICK LINKS

- Editorial Boards
- Reviewers
- Author Guidelines**
- Online Submission**
- Policy of Plagiarism Screening
- Peer Review Process**
- Publication Fee**
- Abstracting and Indexing
- Repository Policy
- Scopus: Add missing document
- Publication Ethics
- Visitor Statistics
- Contact Us

Q2 CiteScore Quartile in Electrical and Electronic Engineering

4.0 ²⁰²³ CiteScore
58th percentile
Powered by Scopus

AUTHOR

Submissions

- Active (0)
- Archive (2)
- New Submission

JOURNAL CONTENT

Search

Search Scope

All

Browse

- By Issue
- By Author
- By Title

Improvement on kNN using Genetic Algorithm and Combined Feature Extraction to Identify COVID-19 Sufferers based on CT-Scan Image

Radityo Adi Nugroho, Arie Sapta Nugraha, Aylwin Al Rasyid, Fenny Winda Rahayu

Dept. of Computer Science, Faculty of Mathematics and Natural Sciences, Lambung Mangkurat University, Indonesia

Article Info

Article history:

Received mm dd, yyyy

Revised mm dd, yyyy

Accepted mm dd, yyyy

Keywords:

Haralick

Histogram

Local Binary Pattern

Genetic Algorithm

k-Nearest Neighbour

ABSTRACT

COVID-19 has spread throughout the world. The detection of this disease is usually carried out using the PCR-RT swab test. However, limited resources became an obstacle to carrying out the massive test. To solve this problem, CT-scan images are used as one of the solutions to detect the sufferer. This technique has been used by researchers but mostly using classifiers that required high resources, such as CNN. In this study, we proposed a way to classify the CT-Scan images by using the more efficient classifier, kNN, for images that are processed using a combination of these feature extraction methods, Haralick, Histogram, and Local Binary Pattern. Genetic Algorithm is also used for feature selection. The results showed that the proposed method was able to improve kNN performance, with the best accuracy of 93.30% for the combination of Haralick and Local Binary Pattern feature extraction, and the best AUC for the combination of Haralick, Histogram, and Local Binary Pattern with a value of 0.948. The best accuracy of our models also outperforms CNN by a 4.3% margin.

This is an open access article under the [CC BY-SA](#) license.



Corresponding Author:

Radityo Adi Nugroho,

Departement of Computer Science,

Faculty of Mathematics and Natural Sciences, Lambung Mangkurat University,

Jl. A. Yani Km. 36, Kampus ULM Banjarbaru. Kalimantan Selatan - 70714

Email: radityo.adi@ulm.ac.id

1. INTRODUCTION

Recently, Indonesia is hit by the COVID-19 pandemic caused by the Coronavirus (SARS-CoV-2). Since it was first announced by the government in March 2020, this virus has continued to spread to various provinces in Indonesia and has infected hundreds of thousands of people. South Kalimantan, a province in Indonesia, is one of the areas with the highest infection rates in Indonesia.

One of the factors that caused the high number of patients was the delay in the identification process of the PCR-RT swab test due to the large number of specimens that had to be examined by the laboratory. This makes the test results known 14 days after the test is carried out. PCR (Polymerase Chain Reaction) is a sample test by taking samples from places where the virus is most likely to be present, such as the back of the nose or mouth or deep in the lungs [1]. The PCR test was also declared by WHO as the golden standard for detecting the presence of COVID-19 in humans.

Although known for its effectiveness, PCR testing is not the only way. The CT Scan (Computerized Tomography Scan) is more accurate than the PCR swab test in early detection of COVID-19 [2]. Many researchers have identified sufferers of COVID-19 through CT-Scan images such as [3-5]. They use the Convolutional Neural Network (CNN) method to classify positive and negative COVID-19 patients with an accuracy rate of more than 90%.

Convolutional Neural Network or CNN is a type of neural network for processing data that has a network-like topology [6]. CNN is widely used in computer vision, as is done by [7-10]. Despite having various advantages, CNN is a method that requires enormous computational resources [11]. However, in Machine Learning there are still many other classification algorithms that can be used with low resources, one of which is kNN (k Nearest Neighbor).

The kNN algorithm was formulated by performing a non-parametric method for pattern classification [12]. kNN also stated as a simple but effective algorithm for several cases [13]. The success of the kNN algorithm depends on selecting the correct k value. In this study, we used the kNN to identify sufferers of COVID-19 based on CT-Scan images. The images was collected from Tongji Hospital in Wuhan, China [4].

Before the data mining process is carried out, the obtained CT-Scan image is extracted based on texture to obtain its characteristic values. Feature extraction in images is divided into several categories, namely, color, texture, and shape [14]. Texture-based feature extraction is known to have advantages, namely it has low computational complexity and is easy to implement [15]. The feature extraction methods used in this study are Haralick, Local Binary Pattern, and 32-bin Histogram.

One of the challenges in this study is that the feature extraction results in each method have a large number of features. This can cause a Curse of Dimensionality (CoD) which leads to a high time complexity problem [16]. CoD may also decrease the accuracy generated by the algorithm. To overcome this weakness, [17] suggested the use of feature selection. Feature selection is the process of selecting the most significant features from a particular data set. In many cases, feature selection can also improve the performance of a machine learning model

One type of feature selection is wrapper [18]. The wrapper makes use of a machine-learning algorithm to evaluate all possible combinations of features and select the combination that produces the best results for that machine learning algorithm. The wrapper method determines the best feature combination by comparing the evaluation criteria determined from various feature combinations, then from the comparison results select the feature combination that has the most optimal results. One algorithm that can be used to perform wrapper-based feature selection is the Genetic Algorithm, as has been done by [19-21].

In this study, we proposed a method to improve kNN classification in the computer vision field. The Genetic Algorithm was used as the feature selection in classifying COVID-19 sufferers through CT Scan images extracted using the Haralick method, 32-bin Histogram, and Local Binary Pattern.

After getting the classification results of the proposed method, we compared them by the best results in the previous work [4]. They used the CNN DenseNet-169 and ResNet-50 architectures. Before entering the CNN process, they did pre-process step by resizing the image to 480x480. An image segmentation process is also carried out to improve accuracy. Meanwhile, in our method, we process the image directly into the feature extraction, without resize and segmentation.

2. RESEARCH METHOD

Our research was carried out as in Figure 1. In this study, the Mahotas [22] library for Python was used to perform feature extraction. Meanwhile, to perform feature selection and classification, the Rapidminer [23] software is used.

2.1 Dataset

The dataset used in this study is the CT-Scan dataset compiled by [4]. There are 746 grayscale images consisting of 349 CT scans of COVID-19 patients and 397 non-COVID-19 patients in *.jpg and *.png formats.

2.2 Feature Extraction

Before entering the classification stage, the features of the downloaded dataset are extracted using Haralick method, 32-bin Histogram, and Local Binary Pattern. At this stage each image is converted into a number of matrix.

The first feature extraction is Haralick. This feature contains information about the intensity of the image in pixels with certain positions in relation to each other occurring simultaneously [24]. This method calculates its feature value from 8 angles, namely 0, 45, 90, 135, 180, 225, 270, 315, 360. Each angle produces 14 features using the formula in Table 1. Thus, each image will produce 8 x 14 features. Then, simplification is carried out by calculating the average value of each corner feature in each image, so that the number of features for each image becomes 14 features. The formula in Tabel 1 is formed from the gray-tone spatial-dependency matrix of an image and defined by [24] as follows:

| | |
|----------------|--|
| $p(i, j)$ | (i, j) th entry in the matrix; |
| $p_{\cdot}(i)$ | the entry in the marginal-probability matrix obtained by summing the rows of $p(i, j)$; |
| N_g | the number of distinct gray levels in the quantized image. |

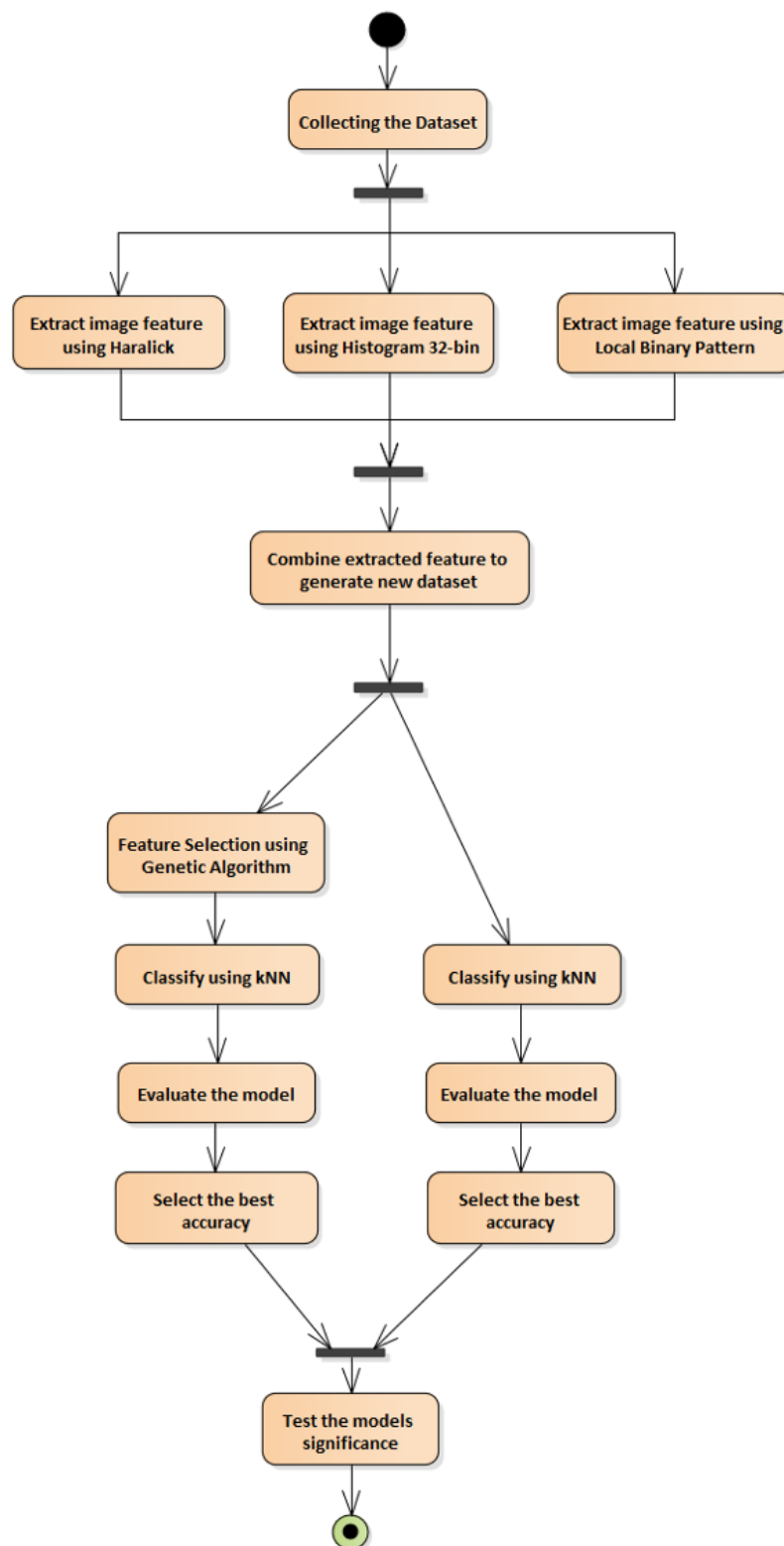


Figure 1. Proposed method abstraction design

Table 1. Haralick's Feature and its Formula

| No | Features | Formula |
|----|-------------------------------|--|
| 1 | Angular Second Moment | $\sum_i \sum_j p(i, j)^2$ |
| 2 | Contrast | $\sum_{n=0}^{Ng-1} n^2 \{ \sum_{i=1}^{Ng} \sum_{j=1}^{Ng} p(i, j) \}, i - j = n$ |
| 3 | Correlation | $\frac{\sum_i \sum_j (ij) p(i, j) - \mu_x \mu_y}{\sigma_x \sigma_y}$ |
| 4 | Sum of Squares: Variance | $\sum_i \sum_j (i - \mu)^2 p(i, j)$ |
| 5 | Inverse Difference Moment | $\sum_i \sum_j \frac{1}{1 + (i - j)^2} p(i, j)$ |
| 6 | Sum Average | $\sum_{i=2}^{2Ng} i p_{x+y}(i)$ |
| 7 | Sum Variance | $\sum_{i=2}^{2Ng} (i - f_8)^2 p_{x+y}(i)$ |
| 8 | Sum Entropy | $-\sum_{i=2}^{2Ng} p_{x+y}(i) \log\{p_{x+y}(i)\} = f_8$ |
| 9 | Entropy | $-\sum_i \sum_j p(i, j) \log(p(i, j))$ |
| 10 | Difference Variance | $\sum_{n=0}^{Ng-1} i^2 p_{x-y}(i)$ |
| 11 | Difference Entropy | $-\sum_{n=0}^{Ng-1} p_{x-y}(i) \log\{p_{x-y}(i)\}$ |
| 12 | Info. Measure of Collection 1 | $\frac{HXY - HXY1}{\max\{HX, HY\}}$ |
| 13 | Info. Measure of Collection 2 | $(1 - \exp[-2(HXY2 - HXY)])^{\frac{1}{2}}$ |
| 14 | Max. Correlation Coefficient | <i>The square root of the second largest eigenvalue of Q,</i> <i>where</i> $Q(i, j) = \sum_k \frac{p(i, k)p(j, k)}{p_x(i)p_y(k)}$ |

The next extraction method is Histogram. An image histogram is a graphical representation of the number of pixels in an image as a function of their intensity. The values formed in each image are grouped into 32 value ranges. So, in this step 32 features are generated

The third is Local Binary Pattern. This method is a simple but very efficient texture operator that labels image pixels by limiting the environment of each pixel and considers the result to be a binary number [25]. Then, the label histogram can be used as a texture descriptor. This method produced 25 features

2.3 Generate New Dataset

This stage is the formation of a new dataset by combining the features formed in 2.2. At this stage, 7 new datasets are generated which are described in Table 2.

Table 2. Detail of new Datasets

| Dataset | Num of Feature | |
|----------------|----------------|--|
| Har | 14 | Formed from Haralick extraction |
| Hist32 | 32 | Formed from Histogram extraction |
| LBP | 25 | Formed from Local Binary Pattern extraction |
| Har+Hist32 | 46 | Combination of Haralick & Histogram 32bin |
| Har+LBP | 39 | Combination of Haralick & Local Binary Pattern |
| Hist32+LBP | 57 | Combination of Histogram 32bin & Local Binary Pattern |
| Har+Hist32+LBP | 71 | Combination of Haralick, Histogram 32bin, & Local Binary Pattern |

2.4 Classification and Cross Validation

At this stage, the dataset formed in Table 2 is classified using the k-Nearest Neighbor algorithm and validated using 10-Fold Cross Validation. The kNN classification is carried out with a value of k=2 to k=17. The value of k=1 was not included because of the high variance [26].

2.4.1 Classification Without Feature Selection (kNN Only)

This classification involves all the features that are formed from Table 2.

2.4.2 Classification using Genetic Algorithm Feature Selection (GA+kNN)

Each dataset in Table 2 is created a new data subset containing only the features selected by the Genetic Algorithm. This algorithm works as follows [27]:

- Step 1: Initialize random individual populations
- Step 2: Assign fitness values for each individual in the population
- Step 3: Make individual selections on the population to create new generation
- Step 4: Perform crossovers on the selected individuals
- Step 5: Perform mutations to avoid similarity in the generation of results crossover and parent population
- Step 6: Repeat step 2 - step 5 until the stop criteria are met.

2.5 Evaluation

At this stage, the performance of the kNN algorithm is evaluated based on its accuracy and AUC value. The higher the accuracy and AUC, the better the performance of the model.

2.6 Significance Test

This stage uses the t-test method to test the significance of each of the best values produced by kNN and AG+kNN for each dataset in Table 2. With alpha value = 0.05, means that the significance value of kNN and GA+kNN is less than 0.05 (p-value < α) indicates the two models can be said to be significantly different.

3. RESULT AND ANALYSIS

At this stage, the best accuracy for the k-NN model is compared with the best for the GA+kNN model. Then, to show that the best accuracy of the two models has a statistically significant difference, a different test is performed using the t-test. The test results can be seen in Table 3. From the significance test, it can be seen that, although not all produce significant differences, the results obtained are the proposed method (GA+kNN) outperforming kNN.

Genetic Algorithm has been shown to improve the performance of the kNN classification in images extracted with Haralick, LBP, and Har+LBP. The best overall accuracy results were achieved by GA+kNN on the Haralick+LBP feature extraction. In addition, the best AUC value is also generated by GA+kNN on Haralick+32-bin Histogram+LBP dataset.

Table 3. Results of the best accuracy and its t-test

| No | Dataset | Best Accuracy kNN | | | Best Accuracy GA+kNN | | | Best Accuracy t-Test ($\alpha = 0,05$) |
|----|----------------|-------------------|----------|-------|----------------------|---------------|--------------|--|
| | | k | Accuracy | AUC | k | Accuracy | AUC | |
| 1 | Har | 15 | 79.10% | 0.835 | 13 | 83.70% | 0.896 | Significant |
| 2 | Hist32 | 2 | 90.90% | 0.936 | 2 | 91.80% | 0.935 | Not Significant |
| 3 | LBP | 4 | 81.00% | 0.859 | 2 | 89.00% | 0.901 | Significant |
| 4 | Har+Hist32 | 2 | 90.62% | 0.933 | 2 | 92.23% | 0.937 | Not Significant |
| 5 | Har+LBP | 2 | 84.60% | 0.868 | 2 | 93.30% | 0.937 | Significant |
| 6 | Hist32+LBP | 2 | 91.55% | 0.942 | 2 | 92.63% | 0.94 | Not Significant |
| 7 | Har+Hist32+LBP | 2 | 91.16% | 0.926 | 2 | 92.76% | 0.948 | Not Significant |

To determine the effectiveness of the model, we compare the best accuracy GA+kNN with the CNN model produced by [4] as in Table 4. It can be seen that the Yang model excels in the AUC score, while the our proposed model is superior in terms of accuracy.

Table 4. GA+kNN comparison against CNN Yang's model

| Yang, <i>et al</i> (2020) | | Proposed Model (GA+kNN) | |
|---------------------------|-------------|-------------------------|-------|
| Accuracy | AUC | Accuracy | AUC |
| 89% | 0.98 | 93.30% | 0.937 |

4. CONCLUSION



The research proved that the model built using the Genetic Algorithm (GA+kNN) combined with Haralick and Local Binary Pattern feature extraction was able to improve the performance of the kNN only classification algorithm and produce the best accuracy with a value of 93.30% and AUC of 0.937. The machine learning model produced is also able to provide excellent results in detecting COVID-19 sufferers based on CT-Scan images. This is evidenced by the accuracy of GA+kNN that outperforms the CNN Yang model, which was formed by the identical dataset.



REFERENCES

- [1] J. Hadaya, M. Schumm and E. H. Livingston, "Testing Individuals for Coronavirus Disease 2019 (COVID-19)," *Jama*, vol. 323, no. 19, p. 1981, 2020.
- [2] T. Ai, Z. Yang, H. Hou, C. Zhan, C. Chen, W. Lv, Q. Tao, Z. Sun and L. Xia, "Correlation of Chest CT and RT-PCR Testing for Coronavirus Disease 2019 (COVID-19) in China: A Report of 1014 Cases," *Radiology*, vol. 296, no. 2, 2020.
- [3] D. Singh, V. Kumar, Vaishali and M. Kaur, "Classification of COVID-19 patients from chest CT images using multi-objective differential evolution-based convolutional neural networks," *European Journal of Clinical Microbiology & Infection Diseases*, vol. 39, no. 7, pp. 1397-1389, 2020.
- [4] X. Yang, X. He, J. Zhao, Y. Zhang, S. Zhang and P. Xie, "COVID-CT-Dataset: A CT Scan Dataset about COVID-19," *arXiv e-prints*, 2020.
- [5] A. I. Khan, J. L. Shah and M. Bhat, "CoroNet: A deep neural network for detection and diagnosis of COVID-19 from chest x-ray images," *Computer Methods and Programs in Biomedicine*, p. 105581, 2020.
- [6] I. Goodfellow, Y. Bengio and A. Courville, *Deep Learning*, Cambridge: MA: The MIT Press, 2016.
- [7] T. Shanthi, S. R. S and A. Raju, "Automatic diagnosis of skin diseases using convolution neural network," *Microprocessors and Microsystems*, vol. 76, p. 103074, 2020.
- [8] D. Liu, Z. Jia, M. Jin, Q. Liu, Z. Liao, J. Zhong, H. Ye and G. Chen, "Cardiac magnetic resonance image segmentation based on convolutional neural network," *Computer Methods and Programs in Biomedicine*, vol. 197, p. 105755, 2020.
- [9] E. Pérez, O. Reyes and S. Ventura, "Convolutional neural networks for the automatic diagnosis of melanoma: An extensive experimental study," *Medical Image Analysis*, vol. 67, p. 101858, 2020.
- [10] Z.-j. Lu, Q. Qin, H.-y. Shi and H. Huang, "SAR moving target imaging based on convolutional neural network," *Digital Signal Processing*, vol. 106, p. 102832, 2020.
- [11] P. Maji and R. Mullins, "On the Reduction of Computational Complexity of Deep Convolutional Neural Networks," *Entropy*, vol. 20, no. 4, p. 305, 2018.
- [12] E. Fix and J. J. L. Hodges, "Discriminatory Analysis. Nonparametric Discrimination: Consistency Properties," *International Statistical Review / Revue Internationale de Statistique*, vol. 57, no. 3, p. 238, 1989.
- [13] H. Wang, I. Düntsch, G. Gediga and G. Guo, "Nearest Neighbours without k," *Advances in Soft Computing Monitoring, Security, and Rescue Techniques in Multiagent Systems*, vol. 28, p. 179–189, 2003.

- [14] R. M. Kumar and K. Sreekumar, "A Survey on Image Feature Descriptors," *International Journal of Computer Science and Information Technologies*, vol. 5, pp. 7668-7673, 2014.
- [15] A. Humeau-Heurtier, "Texture Feature Extraction Methods: A Survey," *IEEE Access*, vol. 7, pp. 8975 - 9000, 2019.
- [16] F. G. Mohammadi, M. H. Amini and H. R. Arabnia, "Evolutionary Computation, Optimization, and Learning Algorithms for Data Science," in *Optimization, Learning, and Control for Interdependent Complex Networks. Advances in Intelligent Systems and Computing*, vol. 1123, Cham, Springer International Publishing, 2020, pp. 37-56.
- [17] K. Chen, Z. Feng-You and Y. Xian-Feng, "Hybrid particle swarm optimization with spiral-shaped mechanism for feature selection," *Expert Systems with Applications*, vol. 128, pp. 140-156, 2019.
- [18] G. Chandrashekar and F. Sahin, "A survey on feature selection methods," *Computers and Electrical Engineering*, vol. 40, no. 1, p. 16–28, 2014.
- [19] S. Sayed, M. Nassef, A. Badr and I. Farag, "A Nested Genetic Algorithm for feature selection in high-dimensional cancer Microarray datasets," *Expert Systems with Applications*, vol. 121, p. 233–243, 2019.
- [20] S. Jadhav, H. He and K. Jenkins, "Information gain directed genetic algorithm wrapper feature selection for credit rating," *Applied Soft Computing*, vol. 69, p. 541–553, 2018.
- [21] R. S. Wahono and N. S. Herman, "Genetic Feature Selection for Software Defect," *Advanced Science Letters*, vol. 20, no. 1, p. 239–244, 2014.
- [22] L. P. Coelho, "Mahotas: Open source software for scriptable computer vision," *Journal of Open Research Software*, vol. 1, no. 1, p. e3, 2013.
- [23] I. Mierswa, M. Wurst, R. Klinkenberg, M. Scholz and T. Euler, "YALE: Rapid Prototyping for Complex Data Mining Tasks," in *Proceedings of the 12th ACM SIGKDD International Conference on Knowledge Discovery and Data Mining*, Philadelphia, 2006.
- [24] R. M. Haralick, K. Shanmugam and I. Dinstein, "Textural Features for Image Classification," *IEEE Transactions on Systems, Man, and Cybernetics*, Vols. SMC-3, no. 3, p. 610–621, 1973.
- [25] T. Ahonen, A. Hadid and M. P. inen, "Face Description with Local Binary Patterns: Application to Face Recognition," *IEEE Transactions on Pattern Analysis and Machine Intelligence*, vol. 28, no. 12, p. 2037–2041, 2006.
- [26] T. Hastie, R. Tibshirani and J. Friedman, *The Elements of Statistical Learning Data Mining, Inference, and Prediction*, New York: Springer, 2017.
- [27] R. Leardi, "Application of a genetic algorithm to feature selection under full validation conditions and to outlier detection," *Journal of Chemometrics*, vol. 8, no. 1, p. 65–79, 1994.

BIOGRAPHIES OF AUTHORS

| | |
|---|---|
|  | <p>Radityo Adi Nugroho is an Assistant Professor in the Department of Computer Science at Lambung Mangkurat University. His research interests include Software Defect Prediction, and Computer Vision.</p> |
|  | <p>Arie Sapta Nugraha is an undergraduate student in the Department of Computer Science at the Lambung Mangkurat University and will be graduating in 2021. Arie has a strong interest in the field of Machine Learning and Software Engineering.</p> |

| | |
|--|--|
|  A portrait of Fenny Winda Rahayu, a young woman wearing a dark blue hijab and a yellow blazer with a university crest on the left chest. The background is a solid blue color. | <p>Fenny Winda Rahayu is an undergraduate student of the Computer Science Department, Faculty of Mathematics and Natural Sciences, Lambung Mangkurat University. Fenny has an interest in Software Engineering and Systems Programming</p> |
|  A portrait of Aylwin Al Rasyid, a young man wearing a yellow blazer over a light-colored collared shirt. The background is a solid blue color. | <p>Aylwin Al Rasyid is an undergraduate student of the Computer Science Department, Faculty of Mathematics and Natural Sciences, Lambung Mangkurat University. Aylwin has interest in Software Engineering and Systems Programming. Besides that, Aylwin also has an interest in UI/UX design.</p> |

4

**Pemberitahuan Penerimaan
17 Maret 2021**

[TELKOMNIKA] Editor Decision "Improvement on kNN using Genetic Algorithm and Combined Feature Extraction to Identify COVID-19 Sufferers based on CT-Scan Image"

Tole Sutikno <telkomnika@ee.uad.ac.id>

Wed, Mar 17, 2021 at 10:38 PM

Reply-To: "Assoc. Prof. Dr. Tole Sutikno" <telkomnika@ee.uad.ac.id>

To: "Mr. Radityo Adi Nugroho" <radityo.adi@ulm.ac.id>

- URGENT !!! Paper ID# 18535
 - Number of min references for research paper is 25 references and min 20 recently journal articles)
 - Adhere every detail of the guide of authors
(<http://iaescore.com/gfa/telkomnika.docx>)
- =====

Dear Prof/Dr/Mr/Mrs Mr. Radityo Adi Nugroho,

It is my great pleasure to inform you that your paper entitled "Improvement on kNN using Genetic Algorithm and Combined Feature Extraction to Identify COVID-19 Sufferers based on CT-Scan Image" has been ACCEPTED and will be published on the TELKOMNIKA Telecommunication Computing Electronics and Control, ISSN 1693-6930; a SCOPUS/ScimagoJR indexed journal, CiteScore 2019: 1.7; SNIP 2019: 0.659 and SJR 2019: 0.214. Congratulations!

Your paper will be scheduled for forthcoming issue. Please submit your final paper as soon as possible (within 4 weeks). If you need more time, please send a request to this email. We can give you 6 weeks at the most.

I look forward for your response

Sincerely yours,
Dr. Tole Sutikno
Editor-in-Chief
telkomnika@ee.uad.ac.id

**** PLEASE PAY ATTENTION! ****

TELKOMNIKA Telecommunication, Computing, Electronics and Control is a Scopus indexed leading journal, Scimago journal ranking (SJR) Q2 on Electrical & Electronics Engineering. This journal ONLY publishes high quality papers. A high quality paper MUST has: 1) a clear statement of the problem the paper is addressing; 2) the proposed solution(s); and 3) results achieved. It describes clearly what has been done before on the problem, and what is NEW. The goal of your final camera ready paper is to describe NOVEL TECHNICAL RESULTS.

For original research paper, there are four (4) types of novel technical results: 1) An algorithm; 2) A system construct: such as hardware design, software system, protocol, etc.; The main goal of your revised paper is to ensure that the next person who designs a system like yours doesn't make the same mistakes and takes advantage of some of your best solutions. So make sure that the hard problems (and their solutions) are discussed and the non-obvious mistakes (and how to avoid them) are discussed; 3) A performance evaluation: obtained through analyses, simulation or measurements; or 4) A theory: consisting of a collection of theorems. Your final camera ready

paper should focus on: 1) Describing the results in sufficient details to establish their validity; 2) Identifying the novel aspects of the results, i.e., what new knowledge is reported and what makes it non-obvious; and 3) Identifying the significance of the results: what improvements and impact do they suggest. Number of minimum references for original research paper is 25 references (and minimum 20 recently journal articles).

For review paper, the paper should present a critical, constructive analysis of the literature in a specific field through summary, classification, analysis and comparison. The function and goal of the review paper is: 1) to organize literature; 2) to evaluate literature; 3) to identify patterns and trends in the literature; 4) to synthesize literature; or 5) to identify research gaps and recommend new research areas. The structure includes:

1. Title – in this case does not indicate that it is a review article.
 2. Abstract – includes a description of subjects covered.
 3. Introduction includes a description of context (paragraph 1 – 3), motivation for review (paragraph 4, sentence 1) and defines the focus (paragraph 4, sentences 2 – 3)
 4. Body – structured by headings and subheadings
 5. Conclusion – states the implications of the findings and identifies possible new research fields
 6. References (“Literature Review”) – organised by number in the order they were cited in the text.
- Number of minimum references for review paper is 50 references (and minimum 40 recently journal articles).

In order to cover part of the event cost, each accepted paper will be charged: USD 265 (or IDR 3800K). This article publication is to support the cost of wide open access dissemination of research results, to manage the various costs associated with handling and editing of the submitted manuscripts, and the Journal management and publication in general, the authors or the author's institution is requested to pay a publication fee for each article accepted. The USD 265 fee covers the standard eight (8) pages manuscript. For every additional page an extra fee of USD 50 (or IDR 730K) per page will be charged.

The payment should be made by bank transfer (T/T):

Bank Account name (please be exact)/Beneficiary: TOLE SUTIKNO
Bank Name: BNI Syariah
Branch Office: Syariah Yogyakarta
City: Yogyakarta
Country: Indonesia
Bank Account #: 0641095007
SWIFT Code (BIC): SYNIIDJAXXX

or through PayPal (as an alternative of bank transfer) to email:
tole@ee.uad.ac.id

Bank's detailed address:
BNI Syariah Yogyakarta
Jl. Kusumanegara No.117, Muja Muju
Kec. Umbulharjo
City: Yogyakarta
Province: D.I. Yogyakarta (DIY)
Country :Indonesia
Post Code: 55165
Indonesia, Phone:+62 274 417222

The Beneficiary's address:

D2, Griya Ngoto Asri, Bangunharjo, Sewon
City: Bantul
Province: D.I. Yogyakarta
Post Code: 55187
Country: Indonesia

For your information, according to international regulations, similarity score of camera-ready paper should be less than 25%. Single author is NOT allowed. The Editor(s) will check whether the final version has been performed and already address the reviewers' comments or not. Failing to do proper revision may lead to the rejection of your paper.

Please submit your final camera ready paper along with your payment evidence and similarity report (by iThenticate or Turnitin) to:
telkomnika@ee.uad.ac.id within 4 weeks.

Reviewer A:

Ethics (Plagiarism, Fraud, Other ethical concerns)

- If you suspect that an article is a substantial copy of another work, please let the editor know, citing the previous work in as much detail as possible.

- It is very difficult to detect the determined fraudster, but if you suspect the results in an article to be untrue, inform it

- Has there been a violation of the accepted norms in the ethical?

Please provide your detailed comments to the Author(s) on the following.:

1. Uptodate references
2. Accuracy and reliability issue.
3. Have the results verified by experiment?
4. How accurate and reliable the if the software you used?
5. Dont start sentence with references.

Does the title of the paper accurately reflect the major focus contribution of this paper?:

Yes

If No, please suggest change of the title as appropriate within 10 words:

1. Uptodate references
2. Accuracy and reliability issue.
3. Have the results verified by experiment?
4. How accurate and reliable the if the software you used?
5. Dont start sentence with references.

Is the abstract an appropriate and adequate digest of the work?:

Yes

Is the paper clear, concise, and well organized?:

Yes

Structure and Presentation (Layout and format, Title, Abstract, Introduction, Method, Results and Discussion, Conclusion, Language). Please provide your detailed comments to the Author(s) on the following:

1. Uptodate references
2. Accuracy and reliability issue.
3. Have the results verified by experiment?
4. How accurate and reliable the if the software you used?
5. Dont start sentence with references.

Do authors place the paper in proper context by citing relevant papers? Is the paper free from obvious errors, misconceptions, or ambiguity? Is the paper written in correct English? Please note grammatical errors and suggest corrections:

1. Uptodate references
2. Accuracy and reliability issue.

3. Have the results verified by experiment?
4. How accurate and reliable the if the software you used?
5. Dont start sentence with references.

Previous Research: If the article builds upon previous research does it reference that work appropriately? Are there any important works that have been omitted? Are the references accurate? Do authors place the paper in proper context by citing relevant papers? Please provide your detailed comments to the Author(s) on the following.:

1. Uptodate references
2. Accuracy and reliability issue.
3. Have the results verified by experiment?
4. How accurate and reliable the if the software you used?
5. Dont start sentence with references.

Rate of the contribution strength to the field and the scientific quality is represented in this paper?:

Good

Please mark appropriate scale for the overall grade for this paper?:

Good

Reviewer's comments and suggestions how to improve the paper. (If it is not possible, kindly please use separate sheets or a copy of the paper for comments and suggestions for revision. Indicate whether revisions are mandatory or suggested. Please use word processing type format if possible, and then upload in next step or submit via email: telkomnika@uad.ac.id)

URGENT: Authors should consider all above items for preparing their revision (and NOT only the below comments)

:

1. Uptodate references
2. Accuracy and reliability issue.
3. Have the results verified by experiment?
4. How accurate and reliable the if the software you used?
5. Dont start sentence with references.

Reviewer B:

Ethics (Plagiarism, Fraud, Other ethical concerns)

- If you suspect that an article is a substantial copy of another work, please let the editor know, citing the previous work in as much detail as possible.

- It is very difficult to detect the determined fraudster, but if you suspect the results in an article to be untrue, inform it

- Has there been a violation of the accepted norms in the ethical?

Please provide your detailed comments to the Author(s) on the following.:

ethics ok no problem

Does the title of the paper accurately reflect the major focus contribution of this paper?:

Yes

If No, please suggest change of the title as appropriate within 10 words:

Is the abstract an appropriate and adequate digest of the work?:

Yes

Is the paper clear, concise, and well organized?:

Yes

Structure and Presentation (Layout and format, Title, Abstract, Introduction, Method, Results and Discussion, Conclusion, Language). Please provide your detailed comments to the Author(s) on the following:

structure ok,

Do authors place the paper in proper context by citing relevant papers? Is the paper free from obvious errors, misconceptions, or ambiguity? Is the paper written in correct English? Please note grammatical errors and suggest corrections:

it's ok

Previous Research: If the article builds upon previous research does it reference that work appropriately? Are there any important works that have been omitted? Are the references accurate? Do authors place the paper in proper context by citing relevant papers? Please provide your detailed comments to the Author(s) on the following.:

There needs to be a comparison after the study literature, a comparison between the weaknesses of previous research and those that will be done, and any changes or developments from previous methods

Rate of the contribution strength to the field and the scientific quality is represented in this paper?:

Good

Please mark appropriate scale for the overall grade for this paper?:

Good

Reviewer's comments and suggestions how to improve the paper. (If it is not possible, kindly please use separate sheets or a copy of the paper for comments and suggestions for revision. Indicate whether revisions are mandatory or suggested. Please use word processing type format if possible, and then upload in next step or submit via email: telkornika@uad.ac.id)

URGENT: Authors should consider all above items for preparing their revision (and NOT only the below comments)

:

There needs to be a comparison after the study literature, a comparison between the weaknesses of previous research and those that will be done, and any changes or developments from previous methods

Reviewer E:

Ethics (Plagiarism, Fraud, Other ethical concerns)

- If you suspect that an article is a substantial copy of another work, please let the editor know, citing the previous work in as much detail as possible.

- It is very difficult to detect the determined fraudster, but if you suspect the results in an article to be untrue, inform it

- Has there been a violation of the accepted norms in the ethical?

Please provide your detailed comments to the Author(s) on the following.:

Does the title of the paper accurately reflect the major focus contribution of this paper?:

Yes

If No, please suggest change of the title as appropriate within 10 words:

Is the abstract an appropriate and adequate digest of the work?:

Yes

Is the paper clear, concise, and well organized?:

Yes

Structure and Presentation (Layout and format, Title, Abstract, Introduction, Method, Results and Discussion, Conclusion, Language). Please provide your detailed comments to the Author(s) on the following:

Do authors place the paper in proper context by citing relevant papers? Is the paper free from obvious errors, misconceptions, or ambiguity? Is the paper written in correct English? Please note grammatical errors and suggest corrections:

Previous Research: If the article builds upon previous research does it reference that work appropriately? Are there any important works that have been omitted? Are the references accurate? Do authors place the paper in proper context by citing relevant papers? Please provide your detailed comments to the Author(s) on the following.:

Rate of the contribution strength to the field and the scientific quality is represented in this paper?:

Average

Please mark appropriate scale for the overall grade for this paper?:

Average

Reviewer's comments and suggestions how to improve the paper. (If it is not possible, kindly please use separate sheets or a copy of the paper for comments and suggestions for revision. Indicate whether revisions are mandatory or suggested. Please use word processing type format if possible, and then upload in next step or submit via email: telkonnika@uad.ac.id)

URGENT: Authors should consider all above items for preparing their revision (and NOT only the below comments)

:

The paper presents an interesting way to improve KNN classification using genetic algorithms. The application is detection of COVID patients using C-SCAN images. The results are highly relevant for the literature and the scientific community. However, the authors must place more effort in detailing the technical and theoretical background of the equations places in table 1. There is no introduction to the symbols in the formulae in this table. So, it is a little bit irrelevant for the general reader this information if there is no more description on what the symbols and formulae mean for the intended application.

TELKOMNIKA (Telecommunication Computing Electronics and Control)

<http://www.journal.uad.ac.id/index.php/TELKOMNIKA>

5

**Pengiriman Bukti Transfer dan Similarity Report
24 Maret 2021**

proof of transfer and similarity report

Radityo Adi Nugroho <radityo.adi@ulm.ac.id>
To: telkomnika@journal.uad.ac.id

Wed, Mar 24, 2021 at 3:26 PM

Dear Prof. Sutikno,

I thank you for receiving my paper entitled "Improvement on KNN using Genetic Algorithm and Combined Feature Extraction to Identify COVID-19 Sufferers based on CT-Scan Image" which will be published in Telkomnika. Attached is proof of transfer of the paper issuance fee, and Turnitin's similarity report. If there are other requirements that I haven't fulfilled, please let me know.

Best regards,
Radityo Adi Nugroho

3 attachments




BNI

Transfer Berhasil

| | |
|------------------------|-------------------------|
| Nama rekening Tujuan | 034 1010 0019040 |
| Tanggal Transaksi | 24/03/2021 |
| Waktu Transaksi | 10:25:09 WIB |
| Cana/Penerima | |
| Bank Tujuan | BNI |
| Nama Penerima | Radityo Adi Nugroho |
| Nama rekening Penerima | 034 1010 0019040 |
| Nominal | 1.000.000,00 |
| Fee | 0,00 |
| Total | 1.000.000,00 |
| Rekening | Telkomnika s.d. Radityo |

Telkomnika_trf.jpg
52K

 **Improvement on kNN using Genetic Algorithm and Combined Feature Extraction to Identify COVID-19 Sufferers based on CT-Scan Image (2).pdf**
1915K

 **kNN CT-Scan Covid - Rev 1 Turnitin 1.docx**
396K



Transaksi Berhasil

Nomor Rekening Tujuan *****007

Nama Rekening Tujuan Bpk TOLE SUTIKNO

Tanggal Transaksi 24-03-2021

Waktu Transaksi 12:20:09 WIB

Email Penerima

Bank Tujuan BNI

Nama Pengirim MU*****D PA****I

Nomor Rekening Pengirim *****389

Nominal 3.800.000,00

Fee 0,00

Total 3.800.000,00

Keterangan Telkomnika a.n. Radityo

Improvement on kNN using Genetic Algorithm and Combined Feature Extraction to Identify COVID-19 Sufferers based on CT-Scan Image

by Radityo Adi Nugroho

Submission date: 18-Mar-2021 03:10AM (UTC-0700)

Submission ID: 1536069417

File name: kNN_CT-Scan_Covid_-_Rev_1_Turnitin_1.docx (395.63K)

Word count: 3156

Character count: 16828

1

TELKOMNIKA Telecommunication, Computing, Electronics and Control

Vol. 18, No. 1, February 2020, pp. xx~xx

ISSN: 1693-6930, accredited First Grade by Kemenristekdikti, Decree No: 21/E/KPT/2018

DOI: 10.12928/TELKOMNIKA.v18i1.xxxxx



Improvement on kNN using Genetic Algorithm and Combined Feature Extraction to Identify COVID-19 Sufferers based on CT-Scan Image

6

Radityo Adi Nugroho, Arie Sapta Nugraha, Aylwin Al Rasyid, Fenny Winda Rahayu

Dept. of Computer Science, Faculty of Mathematics and Natural Sciences, Lambung Mangkurat University, Indonesia

Article Info

Article history:

Received mm dd, yyyy

Revised mm dd, yyyy

Accepted mm dd, yyyy

Keywords:

Haralick

Histogram

Local Binary Pattern

Genetic Algorithm

k-Nearest Neighbour

32 STRACT

COVID-19 has spread throughout the world. The detection of this disease is usually carried out using the PCR-RT swab test. However, limited resources became an obstacle to carrying out the massive test. To solve this problem, CT-scan images are used as one of the solutions to detect the sufferer. This technique has been used by researchers but mostly using classifiers that required high resources, such as CNN. In this study, we proposed a way to classify the CT-Scan images by using the more efficient classifier, kNN, for images that are processed using a combination of these feature extraction methods, Haralick, Histogram, and Local Binary Pattern. Genetic Algorithm is also used for feature selection. The results showed that the proposed method was able to improve kNN performance, with the best accuracy of 93.30% for the combination of Haralick and Local Binary Pattern feature extraction, and the best AUC for the combination of Haralick, Histogram, and Local Binary Pattern with a value of 0.948. The best accuracy of our models also outperforms CNN by a 4.3% margin.

This is an open access article under the CC BY-SA license.



Corresponding Author:

Radityo Adi Nugroho,

Department of Computer Science,

Faculty of Mathematics and Natural Sciences, Lambung Mangkurat University,

Jl. A. Yani Km. 36, Kampus ULM Banjarbaru, Kalimantan Selatan - 70714

Email: radityo.adi@ulm.ac.id

1. INTRODUCTION

20

Recently, Indonesia is hit by the COVID-19 pandemic caused by the Coronavirus (SARS-CoV-2). Since it was first announced by the government in March 2020, this virus has continued to spread to various provinces in Indonesia and has infected hundreds of thousands of people. South Kalimantan, a province in Indonesia, is one of the areas with the highest infection rates in Indonesia.

One of the factors that led to the high number of patients was the delay in the identification process of the PCR-RT swab test due to the large number of specimens that had to be examined by the laboratory. This makes the test results known 14 days after the test is carried out. PCR (Polymerase Chain Reaction) is a sample test by taking samples from places where the virus is most likely to be present, such as the back of the nose or mouth or deep in the lungs [1]. The PCR test was also declared by WHO as the golden standard for detecting the presence of COVID-19 in humans.

Although known for its effectiveness, PCR testing is not the only way. The CT Scan (Computerized Tomography Scan) is more accurate than the PCR swab test in early detection of COVID-19 [2]. Many researchers have identified sufferers of COVID-19 through CT-Scan images such as [3-5]. They use the Convolutional Neural Network (CNN) method to classify positive and negative COVID-19 patients with an accuracy rate of more than 90%.

Journal homepage: <http://journal.uad.ac.id/index.php/TELKOMNIKA>

Convolutional Neural Network or CNN is a type of neural network for processing data that has a network-like topology [6]. CNN is widely used in computer vision, as is done by [7-10]. Despite having various advantages, CNN is a method that requires enormous computational resources [11]. However, in Machine Learning there are still many other classification algorithms that can be used with low resources, one of which is kNN (k Nearest Neighbor).

The kNN algorithm was formulated by performing a non-parametric method for pattern classification [12]. kNN also stated as a simple but effective algorithm for several cases [13]. The success of the kNN algorithm depends on selecting the correct k value. In this study, we used the kNN to identify sufferers of COVID-19 based on CT-Scan images. The images were collected from Tongji Hospital in Wuhan, China [4].

Before the data mining process is carried out, the obtained CT-Scan image is extracted based on texture to obtain its characteristic values. Feature extraction in images is divided into several categories, namely, color, texture, and shape [14]. Texture-based feature extraction is known to have advantages, namely it has low computational complexity and is easy to implement [15]. The feature extraction methods used in this study are Haralick, Local Binary Pattern, and 32-bin Histogram.

One of the challenges in this study is that the feature extraction results in each method have a large number of features. This can cause a Curse of Dimensionality (CoD) which leads to a high time complexity problem [16]. CoD may decrease the accuracy generated by the algorithm. To overcome this weakness, [17] suggested the use of feature selection. Feature selection is a method for selecting the most relevant features from a dataset. Reducing the data dimension would also result in performance improvement in many cases.

One type of feature selection is wrapper [18]. The wrapper uses machine learning to run through all possible feature combinations, then selects the combination that produces the best performance. The wrapper method determines the best feature combination by comparing the evaluation criteria determined from various feature combinations, then from the comparison results select the feature combination that has the most optimal results. One algorithm that can be used to perform wrapper-based feature selection is the Genetic Algorithm, as has been done by [19-21].

In this study, we proposed a method to improve kNN classification in the computer vision field. The Genetic Algorithm was used as the feature selection in classifying COVID-19 sufferers through CT Scan images extracted using the Haralick method, 32-bin Histogram, and Local Binary Pattern.

After getting the classification results of the proposed method, we compared them by the best results in the previous work [4]. They used the CNN DenseNet-169 and ResNet-50 architectures. Before entering the CNN process, they did pre-process step by resizing the image to 480x480. An image segmentation process is also carried out to improve accuracy. Meanwhile, in our method, we process the image directly into the feature extraction, without resize and segmentation.

2. RESEARCH METHOD

Our research was carried out as in Figure 1. In this study, the Mahotas [22] library for Python was used to perform feature extraction. Meanwhile, to perform feature selection and classification, the Rapidminer [23] software is used.

2.1 Dataset

The dataset used in this study is the CT-Scan dataset compiled by [4]. There are 746 grayscale images consisting of 349 CT scans of COVID-19 patients and 397 non-COVID-19 patients in *.jpg and *.png formats.

2.2 Feature Extraction

Before entering the classification stage, the features of the downloaded dataset are extracted using Haralick method, 32-bin Histogram, and Local Binary Pattern. At this stage each image is converted into a number of matrix.

The first feature extraction is Haralick. This feature contains information about the intensity of the image in pixels with certain positions in relation to each other occurring simultaneously [24]. This method calculates its feature value from 8 angles, namely 0, 45, 90, 135, 180, 225, 270, 315, 360. Each angle produces 14 features using the formula in Table 1. Thus, each image will produce 8 x 14 features. Then, simplification is carried out by calculating the average value of each corner feature in each image, so that the number of features for each image becomes 14 features. The formula in Tabel 1 is formed from the gray-tone spatial-dependency matrix of an image and defined by [24] as follows:

| | |
|-----------|--|
| $p(i, j)$ | (i, j) th entry in the matrix; |
| $p_x(i)$ | the entry in the marginal-probability matrix obtained by summing the rows of $p(i, j)$; |
| N_g | the number of distinct gray levels in the quantized image. |

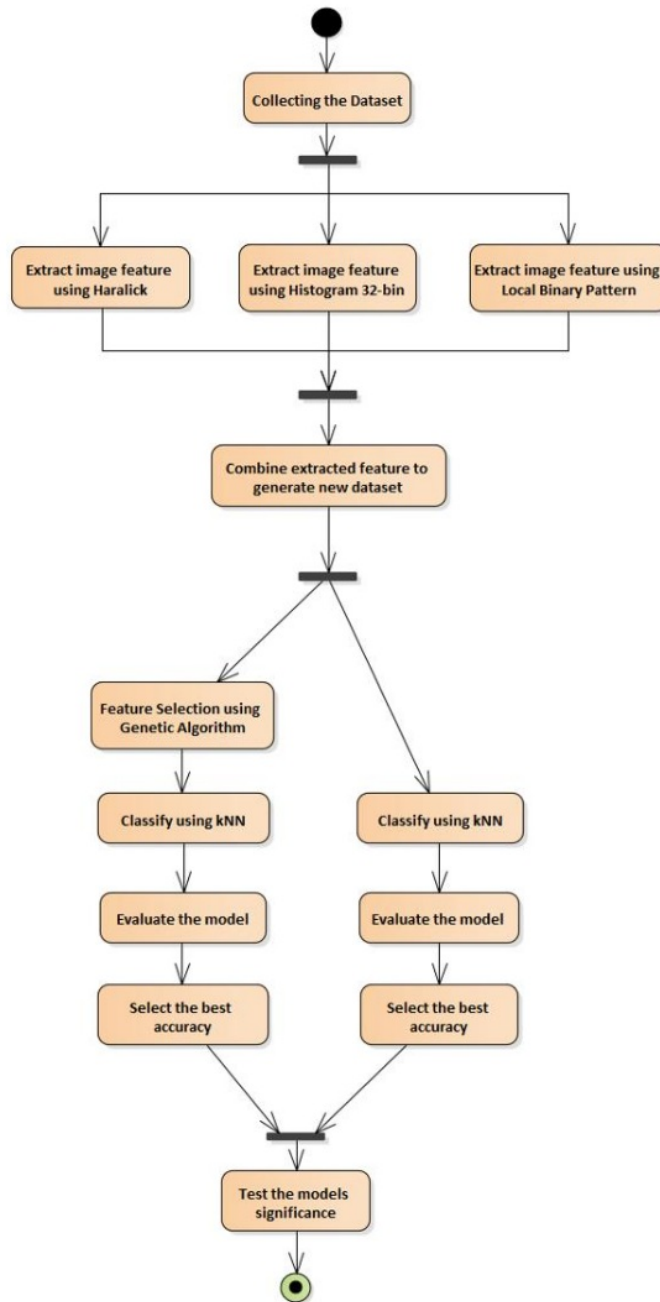


Figure 1. Proposed method abstraction design

Table 1. Haralick's Feature and its Formula

| No | Features | Formula |
|----|-------------------------------|---|
| 1 | Angular Second Moment | $\sum_i \sum_j p(i, j)^2$ |
| 2 | Contrast | $\sum_{n=0}^{Ng-1} n^2 \{ \sum_{i=1}^{Ng} \sum_{j=1}^{Ng} p(i, j) \}, i - j = n$ |
| 3 | Correlation | $\frac{\sum_i \sum_j (ij) p(i, j) - \mu_x \mu_y}{\sigma_x \sigma_y}$ |
| 4 | Sum of Squares: Variance | $\sum_i \sum_j (i - \mu)^2 p(i, j)$ |
| 5 | Inverse Difference Moment | $\sum_i \sum_j \frac{1}{1 + (i - j)^2} p(i, j)$ |
| 6 | Sum Average | $\sum_{i=2}^{2Ng} i p_{x+y}(i)$ |
| 7 | Sum Variance | $\sum_{i=2}^{2Ng} (i - f_8)^2 p_{x+y}(i)$ |
| 8 | Sum Entropy | $-\sum_{i=2}^{2Ng} p_{x+y}(i) \log\{p_{x+y}(i)\} = f_8$ |
| 9 | Entropy | $-\sum_i \sum_j p(i, j) \log(p(i, j))$ |
| 10 | Difference Variance | $\sum_{n=0}^{Ng-1} i^2 p_{x-y}(i)$ |
| 11 | Difference Entropy | $-\sum_{n=0}^{Ng-1} p_{x-y}(i) \log\{p_{x-y}(i)\}$ |
| 12 | Info. Measure of Collection 1 | $\frac{HXY - HXY1}{\max\{HX, HY\}}$ |
| 13 | Info. Measure of Collection 2 | $(1 - \exp[-2(HXY2 - HXY)])^{\frac{1}{2}}$ |
| 14 | Max. Correlation Coefficient | The square root of the second largest eigenvalue of Q , where $Q(i, j) = \sum_k \frac{p(i, k)p(j, k)}{p_x(i)p_y(k)}$ |

The next extraction method is Histogram. An image histogram is the intensity of the number of pixels which is formed in graphical format. The values formed in each image are grouped into 32 value ranges. So, in this step 32 features are generated.

The third is Local Binary Pattern. This method is a simple but very efficient texture operator that labels image pixels by noting the environment of each pixel and considers the result to be a binary number [25]. Then, the label histogram can be used as a texture descriptor. This method produced 25 features.

2.3 Generate New Dataset

This stage is the formation of a new dataset by combining the features formed in 2.2. At this stage, 7 new datasets are generated which are described in Table 2.

Table 2. Detail of new Datasets

| Dataset | Num of Feature | |
|----------------|----------------|--|
| Har | 14 | Formed from Haralick extraction |
| Hist32 | 32 | Formed from Histogram extraction |
| LBP | 25 | Formed from Local Binary Pattern extraction |
| Har+Hist32 | 46 | Combination of Haralick & Histogram 32bin |
| Har+LBP | 39 | Combination of Haralick & Local Binary Pattern |
| Hist32+LBP | 57 | Combination of Histogram 32bin & Local Binary Pattern |
| Har+Hist32+LBP | 71 | Combination of Haralick, Histogram 32bin, & Local Binary Pattern |

2.4 Classification and Cross Validation

At this stage, the dataset formed in Table 2 is classified using the k-Nearest Neighbor algorithm and validated using 10-Fold Cross Validation. The kNN classification is carried out with a value of $k=2$ to $k=17$. The value of $k=1$ was not included because of the high variance [26].

2.4.1 Classification Without Feature Selection (kNN Only)

This classification involves all the features that are formed from Table 2.

2.4.2 Classification using Genetic Algorithm Feature Selection (GA+kNN)

Each dataset in Table 2 is created a new data subset containing only the features selected by the Genetic Algorithm. This algorithm works as follows [27]:

- 18 p 1: Initialize random individual populations
- Step 2: Assign fitness values for each individual in the population
- Step 3: Make individual selections on the population to create new generation
- Step 4: Perform crossovers on the selected individuals
- 21 p 5: Perform mutations to avoid similarity in the generation of results crossover and parent population
- Step 6: Repeat step 2 - step 5 until the stop criteria are met.

2.5 Evaluation

At this stage, the performance of the kNN algorithm is evaluated based on its accuracy and AUC value. The higher the accuracy and AUC, the better the performance of the model.

2.6 Significance Test

This stage uses the t-test method to test the significance of each of the best values produced by kNN and AG+kNN for each dataset in Table 2. With alpha value = 0.05, means that the significance value of kNN and GA+kNN is less than 0.05 ($p\text{-value} < \alpha$) indicates the two models can be said to be significantly different.

3. RESULT AND ANALYSIS

At this stage, the best accuracy for the k-NN model is compared with the best for the GA+kNN model. Then, to show that the best accuracy of the two models has a statistically significant difference, a different test is performed using the t-test. The test results can be seen in Table 3. From the test, we can see that, although not all produce significant differences, the results obtained are the proposed method (GA+kNN) outperforming kNN.

Genetic Algorithm has been shown to improve kNN classification accuracy in images extracted with Haralick, LBP, and Har+LBP. The best overall accuracy results were achieved by GA+kNN on the Haralick+LBP feature extraction. Also, the best AUC value is generated by GA+kNN on Haralick+32-bin Histogram+LBP dataset.

Table 3. Results of the best accuracy and its t-test

| No | Dataset | Best Accuracy kNN | | | Best Accuracy GA+kNN | | | Best Accuracy t-Test ($\alpha = 0,05$) |
|----|----------------|-------------------|----------|-------|----------------------|----------|-------|--|
| | | k | Accuracy | AUC | k | Accuracy | AUC | |
| 1 | Har | 15 | 79.10% | 0.835 | 13 | 83.70% | 0.896 | Significant |
| 2 | Hist32 | 2 | 90.90% | 0.936 | 2 | 91.80% | 0.935 | Not Significant |
| 3 | LBP | 4 | 81.00% | 0.859 | 2 | 89.00% | 0.901 | Significant |
| 4 | Har+Hist32 | 2 | 90.62% | 0.933 | 2 | 92.23% | 0.937 | Not Significant |
| 5 | Har+LBP | 2 | 84.60% | 0.868 | 2 | 93.30% | 0.937 | Significant |
| 6 | Hist32+LBP | 2 | 91.55% | 0.942 | 2 | 92.63% | 0.94 | Not Significant |
| 7 | Har+Hist32+LBP | 2 | 91.16% | 0.926 | 2 | 92.76% | 0.948 | Not Significant |

To determine the effectiveness of the model, we compare the best accuracy GA+kNN with the CNN model produced by [4] as in Table 4. Yang model excels in the AUC score, while the our proposed model is superior in terms of accuracy.

Table 4. GA+kNN comparison against CNN Yang's model

| Yang, <i>et al</i> (2020) | | Proposed Model (GA+kNN) | |
|---------------------------|-------------|-------------------------|-------|
| Accuracy | AUC | Accuracy | AUC |
| 89% | 0.98 | 93.30% | 0.937 |

4. CONCLUSION



The research proved that the model built using the Genetic Algorithm (GA+kNN) combined with Haralick and Local Binary Pattern was able to improve the performance of the kNN only classification algorithm and produce the best accuracy with a value of 93.30% and AUC of 0.937. The machine learning model produced is also able to provide excellent results by outperforms the CNN Yang model, which was formed by the identical dataset.



REFERENCES

- [1] J. Hadaya, M. Schumm and E. H. Livingston, "Testing Individuals for Coronavirus Disease 2019 (COVID-19)," *Jama*, vol. 323, no. 19, p. 1981, 2020.
- [2] T. Ai, Z. Yang, H. Hou, C. Zhan, C. Chen, W. Lv, Q. Tao, Z. Sun and L. Xia, "Correlation of Chest CT and RT-PCR Testing for Coronavirus Disease 2019 (COVID-19) in China: A Report of 1014 Cases," *Radiology*, vol. 296, no. 2, 2020.
- [3] D. Singh, V. Kumar, Vaishali and M. Kaur, "Classification of COVID-19 patients from chest CT images using multi-objective differential evolution-based convolutional neural networks," *European Journal of Clinical Microbiology & Infection Diseases*, vol. 39, no. 7, pp. 1397-1389, 2020.
- [4] X. Yang, X. He, J. Zhao, Y. Zhang, S. Zhang and P. Xie, "COVID-CT-Dataset: A CT Scan Dataset about COVID-19," *arXiv e-prints*, 2020.
- [5] A. I. Khan, J. L. Shah and M. Bhat, "CoroNet: A deep neural network for detection and diagnosis of COVID-19 from chest x-ray images," *Computer Methods and Programs in Biomedicine*, p. 105581, 2020.
- [6] I. Goodfellow, Y. Bengio and A. Courville, *Deep Learning*, Cambridge: MA: The MIT Press, 2016.
- [7] T. Shanthi, S. R. S and A. Raju, "Automatic diagnosis of skin diseases using convolution neural network," *Microprocessors and Microsystems*, vol. 76, p. 103074, 2020.
- [8] D. Liu, Z. Jia, M. Jin, Q. Liu, Z. Liao, J. Zhong, H. Ye and G. Chen, "Cardiac magnetic resonance image segmentation based on convolutional neural network," *Computer Methods and Programs in Biomedicine*, vol. 197, p. 105755, 2020.
- [9] E. Pérez, O. Reyes and S. Ventura, "Convolutional neural networks for the automatic diagnosis of melanoma: An extensive experimental study," *Medical Image Analysis*, vol. 67, p. 101858, 2020.
- [10] Z.-j. Lu, Q. Qin, H.-y. Shi and H. Huang, "SAR moving target imaging based on convolutional neural network," *Digital Signal Processing*, vol. 106, p. 102832, 2020.
- [11] P. Maji and R. Mullins, "On the Reduction of Computational Complexity of Deep Convolutional Neural Networks," *Entropy*, vol. 20, no. 4, p. 305, 2018.
- [12] E. Fix and J. J. L. Hodges, "Discriminatory Analysis. Nonparametric Discrimination: Consistency Properties," *International Statistical Review / Revue Internationale de Statistique*, vol. 57, no. 3, p. 238, 1989.
- [13] H. Wang, I. Düntsch, G. Gediga and G. Guo, "Nearest Neighbours without k," *Advances in Soft Computing Monitoring, Security, and Rescue Techniques in Multiagent Systems*, vol. 28, p. 179-189, 2003.
- [14] R. M. Kumar and K. Sreekumar, "A Survey on Image Feature Descriptors," *International Journal of Computer Science and Information Technologies*, vol. 5, pp. 7668-7673, 2014.
- [15] A. Humeau-Heurtier, "Texture Feature Extraction Methods: A Survey," *IEEE Access*, vol. 7, pp. 8975 - 9000, 2019.

- [16] F. G. Mohammadi, M. H. Amini and H. R. Arabnia, "Evolutionary Computation, Optimization, and Learning Algorithms for Data Science," in *Optimization, Learning, and Control for Interdependent Complex Networks. Advances in Intelligent Systems and Computing*, vol. 1123, Cham, Springer International Publishing, 2020, pp. 37-56.
- [17] K. Chen, Z. Feng-You and Y. Xian-Feng, "Hybrid particle swarm optimization with spiral-shaped mechanism for feature selection," *Expert Systems with Applications*, vol. 128, pp. 140-156, 2019.
- [18] G. Chandrashekar and F. Sahin, "A survey on feature selection methods," *Computers and Electrical Engineering*, vol. 40, no. 1, p. 16–28, 2014.
- [19] S. Sayed, M. Nassef, A. Badr and I. Farag, "A Nested Genetic Algorithm for feature selection in high-dimensional cancer Microarray datasets," *Expert Systems with Applications*, vol. 121, p. 233–243, 2019.
- [20] S. Jadhav, H. He and K. Jenkins, "Information gain directed genetic algorithm wrapper feature selection for credit rating," *Applied Soft Computing*, vol. 69, p. 541–553, 2018.
- [21] R. S. Wahono and N. S. Herman, "Genetic Feature Selection for Software Defect," *Advanced Science Letters*, vol. 20, no. 1, p. 239–244, 2014.
- [22] L. P. Coelho, "Mahotas: Open source software for scriptable computer vision," *Journal of Open Research Software*, vol. 1, no. 1, p. e3, 2013.
- [23] I. Mierswa, M. Wurst, R. Klinkenberg, M. Scholz and T. Euler, "YALE: Rapid Prototyping for Complex Data Mining Tasks," in *Proceedings of the 12th ACM SIGKDD International Conference on Knowledge Discovery and Data Mining*, Philadelphia, 2006.
- [24] R. M. Haralick, K. Shanmugam and I. Dinstein, "Textural Features for Image Classification," *IEEE Transactions on Systems, Man, and Cybernetics*, Vols. SMC-3, no. 3, p. 610–621, 1973.
- [25] T. Ahonen, A. Hadid and M. P. Inen, "Face Description with Local Binary Patterns: Application to Face Recognition," *IEEE Transactions on Pattern Analysis and Machine Intelligence*, vol. 28, no. 12, p. 2037–2041, 2006.
- [26] T. Hastie, R. Tibshirani and J. Friedman, *The Elements of Statistical Learning Data Mining, Inference, and Prediction*, New York: Springer, 2017.
- [27] R. Leardi, "Application of a genetic algorithm to feature selection under full validation conditions and to outlier detection," *Journal of Chemometrics*, vol. 8, no. 1, p. 65–79, 1994.

BIOGRAPHIES OF AUTHORS

| | |
|---|---|
|  | <p style="text-align: center;">14</p> <p>Radityo Adi Nugroho is an Assistant Professor in the Department of Computer Science at Lambung Mangkurat University. His research interests include Software Defect Prediction, and Computer Vision.</p> |
|  | <p style="text-align: center;">12</p> <p>Arie Sapta Nugraha is an undergraduate student in the Department of Computer Science at the Lambung Mangkurat University and will be graduating in 2021. Arie has a strong interest in the field of Machine Learning and Software Engineering.</p> |

| | |
|---|--|
|  | <p style="text-align: right;">7</p> <p>Fenny Winda Rahayu is an undergraduate student of the Computer Science Department, Faculty of Mathematics and Natural Sciences, Lambung Mangkurat University. Fenny has an interest in Software Engineering and Systems Programming</p> |
|  | <p style="text-align: right;">7</p> <p>Aylwin Al Rasyid is an undergraduate student of the Computer Science Department, Faculty of Mathematics and Natural Sciences, Lambung Mangkurat University. Aylwin has interest in Software Engineering and Systems Programming. Besides that, Aylwin also has an interest in UI/UX design.</p> |

Improvement on kNN using Genetic Algorithm and Combined Feature Extraction to Identify COVID-19 Sufferers based on CT-Scan Image

ORIGINALITY REPORT

20%

SIMILARITY INDEX

14%

INTERNET SOURCES

13%

PUBLICATIONS

9%

STUDENT PAPERS

PRIMARY SOURCES

1

Submitted to Universitas Jenderal Achmad Yani

Student Paper

3%

2

Submitted to Asia Pacific University College of Technology and Innovation (UCTI)

Student Paper

2%

3

epdf.pub

Internet Source

1%

4

Submitted to VIT University

Student Paper

1%

5

journal.uad.ac.id

Internet Source

1%

6

Mohammad-H. Tayarani N.. "Applications of artificial intelligence in battling against covid-19: A literature review", Chaos, Solitons & Fractals, 2020

Publication

1%

7

mafiadoc.com

Internet Source

| | | |
|----|--|-----|
| | | 1% |
| 8 | Submitted to University of Mosul Student Paper | 1% |
| 9 | doaj.org Internet Source | 1% |
| 10 | doactorpenguin.com Internet Source | 1% |
| 11 | www.bk.isy.liu.se Internet Source | 1% |
| 12 | citeseerx.ist.psu.edu Internet Source | 1% |
| 13 | Ginanjar Zukhruf Saputri, Akrom Akrom, Haafizah Dania, Okta Muthia S. "Validation of diabetes mellitus patient behavior questionnaire in primary health care service", International Journal of Public Health Science (IJPHS), 2019 Publication | 1% |
| 14 | asp.eurasipjournals.com Internet Source | <1% |
| 15 | Submitted to Brunel University Student Paper | <1% |
| 16 | Kurtulmuş, F., and H. Ünal. "Discriminating rapeseed varieties using computer vision and | <1% |

machine learning", Expert Systems with Applications, 2015.

Publication

17

Submitted to Florida Atlantic University

Student Paper

<1%

18

S, . "Genetic Programming", Computational Intelligence Paradigms Theory & Applications using MATLAB, 2010.

Publication

<1%

19

jamanetwork.com

Internet Source

<1%

20

www.chemistryviews.org

Internet Source

<1%

21

www.mdpi.com

Internet Source

<1%

22

www.journal.uad.ac.id

Internet Source

<1%

23

Pan, Y.. "A novel QSPR model for prediction of lower flammability limits of organic compounds based on support vector machine", Journal of Hazardous Materials, 20090915

Publication

<1%

24

"Optimization, Learning, and Control for Interdependent Complex Networks", Springer Science and Business Media LLC, 2020

Publication

<1%

-
- 25 "The DATA Bonanza", Wiley, 2013 <1 %
Publication
-
- 26 Submitted to Eastern Mediterranean University <1 %
Student Paper
-
- 27 Lecture Notes in Computer Science, 2015. <1 %
Publication
-
- 28 Mehrdad Rostami, Kamal Berahmand, Elahe Nasiri, Saman Forouzande. "Review of swarm intelligence-based feature selection methods", Engineering Applications of Artificial Intelligence, 2021 <1 %
Publication
-
- 29 Shayan Hassantabar, Mohsen Ahmadi, Abbas Sharifi. "Diagnosis and detection of infected tissue of COVID-19 patients based on lung x-ray image using convolutional neural network approaches", Chaos, Solitons & Fractals, 2020 <1 %
Publication
-
- 30 Yujia Sun, Jan Platoš. " data classification model based on random projection and support vector machine ", Concurrency and Computation: Practice and Experience, 2020 <1 %
Publication
-
- 31 eprints.umm.ac.id <1 %
Internet Source
-

32

greenelab.github.io

Internet Source

<1%

33

www.hindawi.com

Internet Source

<1%

Exclude quotes Off

Exclude matches Off

Exclude bibliography Off

6

**Auto Respon Terkait Pengiriman Bukti Transfer dan Similarity
Report
24 Maret 2021**

TELKOMNIKA Auto response to Authors, Reviewers and Readers Re: Proof of transfer and similarity report

TELKOMNIKA TCEC <telkomnika@ee.uad.ac.id>
To: radityo.adi@ulm.ac.id

Wed, Mar 24, 2021 at 3:31 PM

Dear Authors, Reviewers and Readers,

We confirm that your email has reached us.

Authors should submit **only papers** that have **been carefully proofread and polished**. Manuscripts are accepted with the understanding that they are **original** or **extended version** of previously published papers in conferences and/or journals. Before submission please make sure that your paper is prepared using the journal paper template. The authors must refer to **TELKOMNIKA Journal for writing format and style** ([Please download and use as template for initial manuscript submission](#)). This will ensure fast processing and publication. Any papers not fulfilling the requirements based on the guideline to authors will not be processed.

Your paper status

Please **ONLY** contact Assoc. Prof. Dr. Tole Sutikno (Editor-in-Chief) at email: telkomnika@uad.ac.id, cc: telkomnika@ee.uad.ac.id

For more detailed information please get take a look at: <http://www.journal.uad.ac.id/index.php/TELKOMNIKA>

Thank you

Best Regards,
TELKOMNIKA Editorial Office

People

- » [Contact](#)
- » [Editorial Team](#)

Policies

- » [Focus and Scope](#)
- » [Section Policies](#)
- » [Peer Review Process](#)
- » [Open Access Policy](#)
- » [Archiving](#)
- » [Publication Ethics and Publication Malpractice Statement](#)
- » [Article acceptance requirements](#)
- » [Checklist for preparing your paper for publication](#)
- » [Authorship](#)
- » [Withdrawal of Manuscripts](#)
- » [Retraction and Correction policies](#)
- » [TELKOMNIKA Profile in Scimago and Google Scholar](#)

Submissions

- » [Online Submissions](#)
- » [Author Guidelines](#)
- » [Copyright Notice](#)
- » [Privacy Statement](#)

- » [Author Fees](#)



Tole Sutikno

Editor, TELKOMNIKA (Telecommunication, Computing, Electronics and Control)

Website and online system: <http://journal.uad.ac.id/index.php/TELKOMNIKA>

7

Revisi Layout

16 Juli - 3 Agustus 2021

[TELKOMNIKA] Please Revise Your Paper ID 18535

6 messages

eneng nuraeni <enengnura3n1@gmail.com>
To: radityo.adi@ulm.ac.id

Fri, Jul 16, 2021 at 10:17 AM

Dear Sir/Madam,

For preparing your final paper to publish in **TELKOMNIKA (Telecommunication, Computing, Electronics, and Control)** ISSN: 1693-6930, e-ISSN: 2302-9293. Please revise your paper based on the comment on the paper.

We hope to get your revised paper **before July 18, 2021**. Please revise the file that is attached to this email, and reply to the comments there and please send the revised paper with the reply to all emails previously sent. We hope for your response soon. Thank you

Best Regards,
Eneng Nuraeni
TELKOMNIKA Staff

--
TELKOMNIKA Journal

Telecommunication, Computing,
Electronics, and Control



Editor in Chief: telkomnika@uad.ac.id
Staff: enengnura3n1@gmail.com
cc: hanyjournal.iaes@gmail.com

Universitas Ahmad Dahlan, 4th Campus, 9th Floor, LPPI Room
Ringroad Selatan St., Kragilan, Tamanan, Banguntapan, Bantul,
Yogyakarta, Indonesia 55191

Website :
journal.uad.ac.id/index.php/TELKOMNIKA/index

 **18535 24mar21 30mar21 sim20%.docx**
398K

Radityo Adi Nugroho <radityo.adi@ulm.ac.id>
To: eneng nuraeni <enengnura3n1@gmail.com>

Mon, Jul 19, 2021 at 8:13 PM

Dear Ms. Nuraeni,

Attached is my revised paper as you requested.
I'm sorry for not sending it earlier as you wish, because I forgot to send the email. Thank you

Best regards,
Radityo A. Nugroho

[Quoted text hidden]

 **18535 24mar21 30mar21 sim20% (2).docx**
405K

eneng nuraeni <enengnura3n1@gmail.com>
To: Radityo Adi Nugroho <radityo.adi@ulm.ac.id>

Wed, Jul 21, 2021 at 1:37 PM

Received, thank you.

[Quoted text hidden]

eneng nuraeni <enengnura3n1@gmail.com>
To: Radityo Adi Nugroho <radityo.adi@ulm.ac.id>

Mon, Aug 2, 2021 at 9:34 PM

-- Paper ID: 18535

-- Title: **Improvement on kNN using Genetic Algorithm and Combined Feature Extraction to Identify COVID-19 Sufferers based on CT-Scan Image**

Dear Prof./Dr./Mr./Mrs.

I am Eneng Nuraeni writing on behalf of the layout and editing team, under the auspices of the TELKOMNIKA team. We are glad to inform you that your paper is in the layout stage for possible publication in the forthcoming issue of this journal. Your cooperation for final checking and/or updating your paper is required. Please find the attached file (including comments and/or marked parts) to take further action. Kindly submit your updated paper within 5 days.

Please note that this email is only assigned for layout and editing purposes. For other communication purposes, reach us through the principal contact of the journal.

Your cooperation is highly appreciated.

Best regards,
Eneng Nuraeni
Layout and Editing Team

[Quoted text hidden]

 **18535 24mar21 30mar21 sim20% (2).docx**
404K

Radityo Adi Nugroho <radityo.adi@ulm.ac.id>
To: eneng nuraeni <enengnura3n1@gmail.com>

Tue, Aug 3, 2021 at 1:16 PM

Dear Ms. Nuraeni,

In my last email, it seems like I sent you the wrong paper. Sorry, for my mistakes. Attached is the revised one. Thank you.

Wassalam,
Radityo Adi Nugroho

[Quoted text hidden]

 **18535 24mar21 30mar21 sim20%-2.docx**
404K

eneng nuraeni <enengnura3n1@gmail.com>
To: Radityo Adi Nugroho <radityo.adi@ulm.ac.id>

Wed, Aug 4, 2021 at 7:48 AM

received with thanks

[Quoted text hidden]

Improvement on kNN using Genetic Algorithm and Combined Feature Extraction to Identify COVID-19 Sufferers based on CT-Scan Image

Radityo Adi Nugroho, Arie Sapta Nugraha, Aylwin Al Rasyid, Fenny Winda Rahayu

Dept. of Computer Science, Faculty of Mathematics and Natural Sciences, Lambung Mangkurat University, Indonesia

Article Info

Article history:

Received mm dd, yyyy

Revised mm dd, yyyy

Accepted mm dd, yyyy

Keywords:

Haralick

Histogram

Local Binary Pattern

Genetic Algorithm

k-Nearest Neighbour

ABSTRACT

COVID-19 has spread throughout the world. The detection of this disease is usually carried out using the PCR-RT swab test. However, limited resources became an obstacle to carrying out the massive test. To solve this problem, CT-scan images are used as one of the solutions to detect the sufferer. This technique has been used by researchers but mostly using classifiers that required high resources, such as CNN. In this study, we proposed a way to classify the CT-Scan images by using the more efficient classifier, kNN, for images that are processed using a combination of these feature extraction methods, Haralick, Histogram, and Local Binary Pattern. Genetic Algorithm is also used for feature selection. The results showed that the proposed method was able to improve kNN performance, with the best accuracy of 93.30% for the combination of Haralick and Local Binary Pattern feature extraction, and the best AUC for the combination of Haralick, Histogram, and Local Binary Pattern with a value of 0.948. The best accuracy of our models also outperforms CNN by a 4.3% margin.

This is an open access article under the [CC BY-SA](#) license.



Corresponding Author:

Radityo Adi Nugroho,

Departement of Computer Science,

Faculty of Mathematics and Natural Sciences, Lambung Mangkurat University,

Jl. A. Yani Km. 36, Kampus ULM Banjarbaru. Kalimantan Selatan - 70714

Email: radityo.adi@ulm.ac.id

1. INTRODUCTION

Recently, Indonesia is hit by the COVID-19 pandemic caused by the Coronavirus (SARS-CoV-2). Since it was first announced by the government in March 2020, this virus has continued to spread to various provinces in Indonesia and has infected hundreds of thousands of people. South Kalimantan, a province in Indonesia, is one of the areas with the highest infection rates in Indonesia.

One of the factors that caused the high number of patients was the delay in the identification process of the PCR-RT swab test due to the large number of specimens that had to be examined by the laboratory. This makes the test results known 14 days after the test is carried out. PCR (Polymerase Chain Reaction) is a sample test by taking samples from places where the virus is most likely to be present, such as the back of the nose or mouth or deep in the lungs [1]. The PCR test was also declared by WHO as the golden standard for detecting the presence of COVID-19 in humans.

Although known for its effectiveness, PCR testing is not the only way. The CT Scan (Computerized Tomography Scan) is more accurate than the PCR swab test in early detection of COVID-19 [2]. Many researchers have identified sufferers of COVID-19 through CT-Scan images such as [3-5]. They use the Convolutional Neural Network (CNN) method to classify positive and negative COVID-19 patients with an accuracy rate of more than 90%.

Convolutional Neural Network or CNN is a type of neural network for processing data that has a network-like topology [6]. CNN is widely used in computer vision, as is done by [7-10]. Despite having various advantages, CNN is a method that requires enormous computational resources [11]. However, in Machine Learning there are still many other classification algorithms that can be used with low resources, one of which is kNN (k Nearest Neighbor).

The kNN algorithm was formulated by performing a non-parametric method for pattern classification [12]. kNN also stated as a simple but effective algorithm for several cases [13]. The success of the kNN algorithm depends on selecting the correct k value. In this study, we used the kNN to identify sufferers of COVID-19 based on CT-Scan images. The images were collected from Tongji Hospital in Wuhan, China [4].

Before the data mining process is carried out, the obtained CT-Scan image is extracted based on texture to obtain its characteristic values. Feature extraction in images is divided into several categories, namely, color, texture, and shape [14]. Texture-based feature extraction is known to have advantages, namely it has low computational complexity and is easy to implement [15]. The feature extraction methods used in this study are Haralick, Local Binary Pattern, and 32-bin Histogram.

One of the challenges in this study is that the feature extraction results in each method have a large number of features. This can cause a Curse of Dimensionality (CoD) which leads to a high time complexity problem [16]. CoD may also decrease the accuracy generated by the algorithm. To overcome this weakness, [17] suggested the use of feature selection. Feature selection is a method for selecting the most relevant features from a dataset. Reducing the data dimension would also result in performance improvement in many cases.

One type of feature selection is wrapper [18]. The wrapper uses machine learning to run through all possible feature combinations, then selects the combination that produces the best performance. The wrapper method determines the best feature combination by comparing the evaluation criteria determined from various feature combinations, then from the comparison results select the feature combination that has the most optimal results. One algorithm that can be used to perform wrapper-based feature selection is the Genetic Algorithm, as has been done by [19-21].

In this study, we proposed a method to improve kNN classification in the computer vision field. The Genetic Algorithm was used as the feature selection in classifying COVID-19 sufferers through CT Scan images extracted using the Haralick method, 32-bin Histogram, and Local Binary Pattern.

After getting the classification results of the proposed method, we compared them by the best results in the previous work [4]. They used the CNN DenseNet-169 and ResNet-50 architectures. Before entering the CNN process, they did pre-process step by resizing the image to 480x480. An image segmentation process is also carried out to improve accuracy. Meanwhile, in our method, we process the image directly into the feature extraction, without resize and segmentation.

2. RESEARCH METHOD

Our research was carried out as in Figure 1. In this study, the Mahotas [22] library for Python was used to perform feature extraction. Meanwhile, to perform feature selection and classification, the Rapidminer [23] software is used.

2.1 Dataset

The dataset used in this study is the CT-Scan dataset compiled by [4]. There are 746 grayscale images consisting of 349 CT scans of COVID-19 patients and 397 non-COVID-19 patients. The images are vary in *.jpg and *.png formats.

2.2 Feature Extraction

Before entering the classification stage, the features of the downloaded dataset are extracted using Haralick method, 32-bin Histogram, and Local Binary Pattern. At this stage each image is converted into a number of matrix.

The first feature extraction is Haralick. This feature contains information about the intensity of the image in pixels with certain positions in relation to each other occurring simultaneously [24]. This method calculates its feature value from 8 angles, namely 0, 45, 90, 135, 180, 225, 270, 315, 360. Each angle produces 14 features using the formula in Table 1. Thus, each image will produce 8 x 14 features. Then, simplification is carried out by calculating the average value of each corner feature in each image, so that the number of features for each image becomes 14 features. The formula in Tabel 1 is formed from the gray-tone spatial-dependency matrix of an image and defined by [24] as follows:

| | |
|-----------|--|
| $p(i, j)$ | (i, j) th entry in the matrix; |
| $p_x(i)$ | the entry in the marginal-probability matrix obtained by summing the rows of $p(i, j)$; |
| N_g | the number of distinct gray levels in the quantized image. |

Commented [A1]: In one paragraph there are at least 3 sentences. please add a few more sentences

Commented [RAN2R1]: Sentence has been added

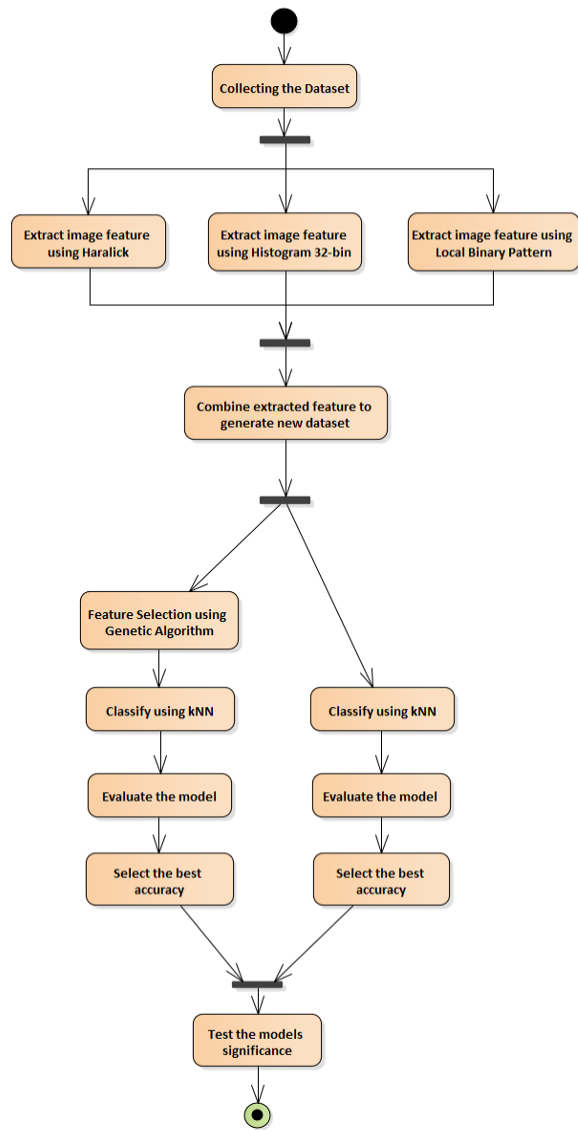


Figure 1. Proposed method abstraction design

Table 1. Haralick's Feature and its Formula

| No | Features | Formula |
|----|-------------------------------|---|
| 1 | Angular Second Moment | $\sum_i \sum_j p(i, j)^2$ |
| 2 | Contrast | $\sum_{n=0}^{Ng-1} n^2 \{ \sum_{i=1}^{Ng} \sum_{j=1}^{Ng} p(i, j) \}, i - j = n$ |
| 3 | Correlation | $\frac{\sum_i \sum_j (ij) p(i, j) - \mu_x \mu_y}{\sigma_x \sigma_y}$ |
| 4 | Sum of Squares: Variance | $\sum_i \sum_j (i - \mu)^2 p(i, j)$ |
| 5 | Inverse Difference Moment | $\sum_i \sum_j \frac{1}{1 + (i - j)^2} p(i, j)$ |
| 6 | Sum Average | $\sum_{i=2}^{2Ng} i p_{x+y}(i)$ |
| 7 | Sum Variance | $\sum_{i=2}^{2Ng} (i - f_8)^2 p_{x+y}(i)$ |
| 8 | Sum Entropy | $-\sum_{i=2}^{2Ng} p_{x+y}(i) \log\{p_{x+y}(i)\} = f_8$ |
| 9 | Entropy | $-\sum_i \sum_j p(i, j) \log(p(i, j))$ |
| 10 | Difference Variance | $\sum_{n=0}^{Ng-1} i^2 p_{x-y}(i)$ |
| 11 | Difference Entropy | $-\sum_{n=0}^{Ng-1} p_{x-y}(i) \log\{p_{x-y}(i)\}$ |
| 12 | Info. Measure of Collection 1 | $\frac{HXY - HXY1}{\max\{HX, HY\}}$ |
| 13 | Info. Measure of Collection 2 | $(1 - \exp[-2(HXY2 - HXY)])^{\frac{1}{2}}$ |
| 14 | Max. Correlation Coefficient | <i>The square root of the second largest eigenvalue of Q,</i> where $Q(i, j) = \sum_k \frac{p(i, k)p(j, k)}{p_x(i)p_y(k)}$ |

The next extraction method is Histogram. An image histogram is the intensity of the number of pixels which is formed in graphical format. The values formed in each image are grouped into 32 value ranges. So, in this step 32 features are generated.

The third is Local Binary Pattern. This method is a simple but very efficient texture operator that labels image pixels by limiting the environment of each pixel and considers the result to be a binary number [25]. Then, the label histogram can be used as a texture descriptor. This method produced 25 features.

2.3 Generate New Dataset

This stage is the formation of a new dataset by combining the features formed in 2.2. At this stage, 7 new datasets are generated which are described in Table 2. Every dataset has different dimension depends on its feature extraction method.

Table 2. Detail of new Datasets

| Dataset | Num of Feature | |
|----------------|----------------|--|
| Har | 14 | Formed from Haralick extraction |
| Hist32 | 32 | Formed from Histogram extraction |
| LBP | 25 | Formed from Local Binary Pattern extraction |
| Har+Hist32 | 46 | Combination of Haralick & Histogram 32bin |
| Har+LBP | 39 | Combination of Haralick & Local Binary Pattern |
| Hist32+LBP | 57 | Combination of Histogram 32bin & Local Binary Pattern |
| Har+Hist32+LBP | 71 | Combination of Haralick, Histogram 32bin, & Local Binary Pattern |

Commented [A3]: In one paragraph there are at least 3 sentences. please add a few more sentences.

Commented [RAN4R3]: Sentence has been added

2.4 Classification and Cross Validation

At this stage, the dataset formed in Table 2 is classified using the k-Nearest Neighbor algorithm and validated using 10-Fold Cross Validation. The kNN classification is carried out with a value of k=2 to k=17. The value of k=1 was not included because of the high variance [26].

2.4.1 Classification Without Feature Selection (kNN Only)

[This classification involves all the features that are formed from Table 2.] Here, we do not select the features yet. Later, the accuracy of the kNN classifier will be compared to the accuracy of GA+kNN

Commented [A5]: In one paragraph there are at least 3 sentences. please add a few more sentences.

2.4.2 Classification using Genetic Algorithm Feature Selection (GA+kNN)

Each dataset in Table 2 is created a new data subset containing only the features selected by the Genetic Algorithm. This algorithm works as follows [27]:

Commented [RAN6R5]: Sentence has been added

- Step 1: Initialize random individual populations
- Step 2: Assign fitness values for each individual in the population
- Step 3: Make individual selections on the population to create new generation
- Step 4: Perform crossovers on the selected individuals
- Step 5: Perform mutations to avoid similarity in the generation of results crossover and parent population
- Step 6: Repeat step 2 - step 5 until the stop criteria are met.

2.5 Evaluation

[At this stage, the performance of the kNN algorithm is evaluated based on its accuracy and AUC. The higher the accuracy value, the better the performance of the model.] This rule also applied to the AUC value.

Commented [A7]: In one paragraph there are at least 3 sentences. please add a few more sentences.

2.6 Significance Test

At this stage, we use the t-test method. This method was applied to test the significance of each of the best values produced by kNN and AG+kNN for each dataset in Table 2. With alpha value = 0.05, means that the significance value of kNN and GA+kNN is less than 0.05 (p-value < α) indicates the two models can be said to be significantly different.

Commented [RAN8R7]: The paragraph has been modified

Commented [A9]: In one paragraph there are at least 3 sentences. please add a few more sentences.

3. RESULT AND ANALYSIS

At this stage, the best accuracy for the k-NN model is compared with the best for the GA+kNN model. Then, to show that the best accuracy of the two models has a statistically significant difference, a different test is performed using the t-test. The test results can be seen in Table 3. From the test, we can see that, although not all produce significant differences, the results obtained are the proposed method (GA+kNN) outperforming kNN.

Commented [RAN10R9]: The paragraph has been modified

Genetic Algorithm has been shown to improve kNN classification accuracy in images extracted with Haralick, LBP, and Har+LBP. The best overall accuracy results were achieved by GA+kNN on the Haralick+LBP feature extraction. Also, the best AUC value is generated by GA+kNN on Haralick+32-bin Histogram+LBP dataset.

Table 3. Results of the best accuracy and its t-test

| No | Dataset | Best Accuracy kNN | | | Best Accuracy GA+kNN | | | Best Accuracy t-Test ($\alpha = 0,05$) |
|----|----------------|-------------------|----------|-------|----------------------|---------------|--------------|--|
| | | k | Accuracy | AUC | k | Accuracy | AUC | |
| 1 | Har | 15 | 79.10% | 0.835 | 13 | 83.70% | 0.896 | Significant |
| 2 | Hist32 | 2 | 90.90% | 0.936 | 2 | 91.80% | 0.935 | Not Significant |
| 3 | LBP | 4 | 81.00% | 0.859 | 2 | 89.00% | 0.901 | Significant |
| 4 | Har+Hist32 | 2 | 90.62% | 0.933 | 2 | 92.23% | 0.937 | Not Significant |
| 5 | Har+LBP | 2 | 84.60% | 0.868 | 2 | 93.30% | 0.937 | Significant |
| 6 | Hist32+LBP | 2 | 91.55% | 0.942 | 2 | 92.63% | 0.94 | Not Significant |
| 7 | Har+Hist32+LBP | 2 | 91.16% | 0.926 | 2 | 92.76% | 0.948 | Not Significant |

To determine the effectiveness of the model, we compare the best accuracy GA+kNN with the CNN model produced by [4] as in Table 4. Yang model excels in the AUC score, while the our proposed model is superior in terms of accuracy.

Table 4. GA+kNN comparison against CNN Yang's model

| Yang, <i>et al</i> (2020) | | Proposed Model (GA+kNN) | |
|---------------------------|-------------|-------------------------|-------|
| Accuracy | AUC | Accuracy | AUC |
| 89% | 0.98 | 93.30% | 0.937 |

4. CONCLUSION

The research proved that the model built using the Genetic Algorithm (GA+kNN) combined with Haralick and Local Binary Pattern was able to improve the performance of the kNN only classification algorithm and produce the best accuracy with a value of 93.30% and AUC of 0.937. The machine learning model produced is also able to provide excellent results by outperforms the CNN Yang model, which was formed by the identical dataset.

REFERENCES

- [1] J. Hadaya, M. Schumm and E. H. Livingston, "Testing Individuals for Coronavirus Disease 2019 (COVID-19)," *Jama*, vol. 323, no. 19, p. 1981, 2020, doi:10.1001/jama.2020.5388.
- [2] T. Ai, et al, "Correlation of Chest CT and RT-PCR Testing for Coronavirus Disease 2019 (COVID-19) in China: A Report of 1014 Cases," *Radiology*, vol. 296, no. 2, 2020, doi:10.1148/radiol.20200642.
- [3] D. Singh, V. Kumar, Vaishali and M. Kaur, "Classification of COVID-19 patients from chest CT images using multi-objective differential evolution-based convolutional neural networks," *European Journal of Clinical Microbiology & Infection Diseases*, vol. 39, no. 7, pp. 1397-1389, 2020, doi:10.1007/s10096-020-03901-z.
- [4] X. Yang, X. He, J. Zhao, Y. Zhang, S. Zhang and P. Xie, "COVID-CT-Dataset: A CT Scan Dataset about COVID-19," *arXiv e-prints*, 2020, arXiv:2003.13865.
- [5] A. I. Khan, J. L. Shah and M. Bhat, "CoroNet: A deep neural network for detection and diagnosis of COVID-19 from chest x-ray images," *Computer Methods and Programs in Biomedicine*, p. 105581, 2020, doi:10.1016/j.cmpb.2020.105581.
- [6] I. Goodfellow, Y. Bengio and A. Courville, *Deep Learning*, Cambridge: MA: The MIT Press, 2016, isbn: 978-0262035613.
- [7] T. Shanthi, S. R. S and A. Raju, "Automatic diagnosis of skin diseases using convolution neural network," *Microprocessors and Microsystems*, vol. 76, p. 103074, 2020, doi:10.1016/j.micpro.2020.103074.
- [8] D. Liu, et al, "Cardiac magnetic resonance image segmentation based on convolutional neural network," *Computer Methods and Programs in Biomedicine*, vol. 197, p. 105755, 2020, doi:10.1016/j.cmpb.2020.105755.
- [9] E. Pérez, O. Reyes and S. Ventura, "Convolutional neural networks for the automatic diagnosis of melanoma: An extensive experimental study," *Medical Image Analysis*, vol. 67, p. 101858, 2020, doi:10.1016/j.media.2020.101858.
- [10] Z.-j. Lu, Q. Qin, H.-y. Shi and H. Huang, "SAR moving target imaging based on convolutional neural network," *Digital Signal Processing*, vol. 106, p. 102832, 2020, doi:10.1016/j.dsp.2020.102832.
- [11] P. Maji and R. Mullins, "On the Reduction of Computational Complexity of Deep Convolutional Neural Networks," *Entropy*, vol. 20, no. 4, p. 305, 2018, doi:10.3390/e20040305.
- [12] E. Fix and J. J. L. Hodges, "Discriminatory Analysis. Nonparametric Discrimination: Consistency Properties," *International Statistical Review / Revue Internationale de Statistique*, vol. 57, no. 3, p. 238, 1989, doi:10.2307/1403797.
- [13] H. Wang, I. Düntsch, G. Gediga and G. Guo, "Nearest Neighbours without k," *Advances in Soft Computing Monitoring, Security, and Rescue Techniques in Multiagent Systems*, vol. 28, p. 179–189, 2005, doi:10.1007/3-540-32370-8_12.

Commented [A11]: Please correct reference writing. Make sure it matches the TELKOMNIKA template (with journal name, volume, issue, paper page, year and doi). Please complete all references. If the number of authors is more than 6 then use *et al*, and if less than 6 then state the names of all authors. Pay attention to the use of points and commas properly. Thank you.


Example:




M. M. Chiampi and L. L. Zilberti, "Induction of electric field in human bodies moving near MRI: An efficient BEM computational procedure," *International Journal of Advanced Manufacturing Technolog*, vol. 58, no. 7, pp. 2787-2793, Oct. 2011, doi: 10.1109/TBME.2011.2158315.

Commented [RAN12R11]: Doi, arxiv, and isbn added et al used in articles written by more than 6 authors

- [14] R. M. Kumar and K. Sreekumar, "A Survey on Image Feature Descriptors," *International Journal of Computer Science and Information Technologies*, vol. 5, pp. 7668-7673, 2014, issn:0975-9646.
- [15] A. Humeau-Heurtier, "Texture Feature Extraction Methods: A Survey," *IEEE Access*, vol. 7, pp. 8975-9000, 2019, doi:10.1109/ACCESS.2018.2890743.
- [16] F. G. Mohammadi, M. H. Amini and H. R. Arabnia, "Evolutionary Computation, Optimization, and Learning Algorithms for Data Science," in *Optimization, Learning, and Control for Interdependent Complex Networks. Advances in Intelligent Systems and Computing*, vol. 1123, Cham, Springer International Publishing, 2020, pp. 37-56, doi:10.1007/978-3-030-34094-0_3.
- [17] K. Chen, Z. Feng-You and Y. Xian-Feng, "Hybrid particle swarm optimization with spiral-shaped mechanism for feature selection," *Expert Systems with Applications*, vol. 128, pp. 140-156, 2019, doi:10.1016/j.eswa.2019.03.039.
- [18] G. Chandrashekar and F. Sahin, "A survey on feature selection methods," *Computers and Electrical Engineering*, vol. 40, no. 1, p. 16-28, 2014, doi:10.1016/j.compeleceng.2013.11.024.
- [19] S. Sayed, M. Nassef, A. Badr and I. Farag, "A Nested Genetic Algorithm for feature selection in high-dimensional cancer Microarray datasets," *Expert Systems with Applications*, vol. 121, p. 233-243, 2019, doi:10.1016/j.eswa.2018.12.022.
- [20] S. Jadhav, H. He and K. Jenkins, "Information gain directed genetic algorithm wrapper feature selection for credit rating," *Applied Soft Computing*, vol. 69, p. 541-553, 2018, doi:10.1016/j.asoc.2018.04.033.
- [21] R. S. Wahono and N. S. Herman, "Genetic Feature Selection for Software Defect," *Advanced Science Letters*, vol. 20, no. 1, p. 239-244, 2014, doi:10.1166/asl.2014.5283.
- [22] L. P. Coelho, "Mahotas: Open source software for scriptable computer vision," *Journal of Open Research Software*, vol. 1, no. 1, p. e3, 2013, doi:10.5334/jors.ac.
- [23] I. Mierswa, M. Wurst, R. Klinkenberg, M. Scholz and T. Euler, "YALE: Rapid Prototyping for Complex Data Mining Tasks," in *Proceedings of the 12th ACM SIGKDD International Conference on Knowledge Discovery and Data Mining*, Philadelphia, 2006, doi:10.1145/1150402.1150531.
- [24] R. M. Haralick, K. Shanmugam and I. Dinstein, "Textural Features for Image Classification," *IEEE Transactions on Systems, Man, and Cybernetics*, Vols. SMC-3, no. 3, p. 610-621, 1973, doi:10.1109/TSMC.1973.4309314.
- [25] T. Ahonen, A. Hadid and M. Pietikainen, "Face Description with Local Binary Patterns: Application to Face Recognition," *IEEE Transactions on Pattern Analysis and Machine Intelligence*, vol. 28, no. 12, p. 2037-2041, 2006, doi:10.1109/TPAMI.2006.244.
- [26] T. Hastie, R. Tibshirani and J. Friedman, "The Elements of Statistical Learning Data Mining, Inference, and Prediction", *Springer Series in Statistics*, New York: Springer, 2009, doi:10.1007/BF02985802.
- [27] R. Leardi, "Application of a genetic algorithm to feature selection under full validation conditions and to outlier detection," *Journal of Chemometrics*, vol. 8, no. 1, p. 65-79, 1994, doi:10.1002/cem.1180080107.

BIOGRAPHIES OF AUTHORS

| | |
|---|---|
|  | <p>Radityo Adi Nugroho is an Assistant Professor in the Department of Computer Science at Lambung Mangkurat University. His research interests include Software Defect Prediction, and Computer Vision.</p> |
| | |

| | |
|--|--|
|  | <p>Arie Sapta Nugraha is an undergraduate student in the Department of Computer Science at the Lambung Mangkurat University and will be graduating in 2021. Arie has a strong interest in the field of Machine Learning and Software Engineering.</p> |
|  | <p>Fenny Winda Rahayu is an undergraduate student of the Computer Science Department, Faculty of Mathematics and Natural Sciences, Lambung Mangkurat University. Fenny has an interest in Software Engineering and Systems Programming</p> |
|  | <p>Aylwin Al Rasyid is an undergraduate student of the Computer Science Department, Faculty of Mathematics and Natural Sciences, Lambung Mangkurat University. Aylwin has interest in Software Engineering and Systems Programming. Besides that, Aylwin also has an interest in UI/UX design.</p> |

8
Permintaan Proofreading
24 Agustus 2021

[TELKOMNIKA Proofreading] October 2021 Paper ID 18535

1 message

eneng nuraeni <enengnura3n1@gmail.com>
To: Radityo Adi Nugroho <radityo.adi@ulm.ac.id>

Tue, Aug 24, 2021 at 5:01 AM

-- Paper ID: 18535
-- Title: **Improvement on KNN using genetic algorithm and combined feature extraction to identify COVID-19 sufferers based on CT scan image**

Dear Prof./Dr./Mr./Mrs.

I am Eneng Nuraeni writing on behalf of the layout and editing team, under the auspices of the TELKOMNIKA team. We are glad to inform you that your paper is in the final stage before publication in the forthcoming issue of this journal. Your cooperation in proofreading your paper is required.

Please find the attached final camera-ready paper in PDF file format. **Please read and check your paper carefully including citations and full names of abbreviations. We can not serve the change of paper that has been published.** If you would like to do any updates, please mark and put your comments in the attached file below. Please send the comment paper with the reply to all emails previously sent. Kindly send your confirmation **within 2x24 hours**. If you have passed the deadline, then we consider it to be the final paper.

Please note that this email is only assigned for layout and editing purposes. For other communication purposes, reach us through the principal contact of the journal.

Your cooperation is highly appreciated.

Best regards,
Eneng Nuraeni
Layout and Editing Team


--
TELKOMNIKA Journal
Telecommunication, Computing,
Electronics, and Control



Editor in Chief: telkomnika@uad.ac.id
Staff: enengnura3n1@gmail.com
cc: hanyjournal.iaes@gmail.com

Universitas Ahmad Dahlan, 4th Campus, 9th Floor, LPPI Room
Ringroad Selatan St., Kragilan, Tamanan, Banguntapan, Bantul,
Yogyakarta, Indonesia 55191

Website :
journal.uad.ac.id/index.php/TELKOMNIKA/index

 **17 18535 13Nov20 19Jul21 5Aug21 hany.pdf**
524K

9

**Pemberitahuan Terbit
21 September 2021**

[TELKOMNIKA] Your Paper ID 18535 is already PUBLISHED

1 message

eneng nuraeni <enengnura3n1@gmail.com>
To: Radityo Adi Nugroho <radityo.adi@ulm.ac.id>

Tue, Sep 21, 2021 at 10:48 AM

Dear TELKOMNIKA Authors,

We are glad to inform you that your paper **ID 18535** now is **already PUBLISHED in the October 2021 Issue**. You can visit TELKOMNIKA Website or click on this link: <http://journal.uad.ac.id/index.php/TELKOMNIKA/article/view/18535/10777>. To increase citation, you can share the final paper to your Google Scholar/ResearchGate/etc.

Please read and check your paper carefully, because we will activate the number DOI soon. If there is any part incorrect, please inform us by reply to all this email. We cannot serve changes to papers that have an active DOI number. Please give your responses **within 2 days**.

Thank you for your cooperation. Stay Positive, Stay Healthy, and Stay Safe.

Best regards
Eneng Nuraeni
TELKOMNIKA Staff

--
TELKOMNIKA Journal

Telecommunication, Computing,
Electronics, and Control



Editor in Chief: telkomnika@uad.ac.id
Staff: enengnura3n1@gmail.com
cc: hanyjournal.iaes@gmail.com

Universitas Ahmad Dahlan, 4th Campus, 9th Floor, LPPI Room
Ringroad Selatan St., Kragilan, Tamanan, Banguntapan, Bantul,
Yogyakarta, Indonesia 55191

Website :
journal.uad.ac.id/index.php/TELKOMNIKA/index