

# 1 Comparison of Various Spectral Indices for Optimum Extraction 2 of Tropical Wetlands Using Landsat 8 OLI

3

4 **Abstract** This research specifically aims to investigate the most accurate spectral indices in extracting wetlands  
5 geospatial information taking South Kalimantan, Indonesia, as an example of wetlands in tropical areas. Ten  
6 spectral indices were selected for testing their ability to extract wetlands, those are NDVI, NDWI, MNDWI,  
7 MNDWIs2, NDMI, WRI, NDPI, TCWT, AWEInsh, and AWEIsh. Tests were performed on Landsat 8 OLI path/row  
8 117/062 and 117/063. The threshold method which was used to separate the wetland features from the spectral  
9 indices imagery is Otsu method. The results of this research showed that generally MNDWIs2 was the most optimal  
10 spectral indices in wetlands extraction. Especially tropical wetlands that rich with green vegetation cover. However,  
11 MNDWIs2 is very sensitive to dense vegetation, this feature has the potential to be detected as wetlands. Furthermore,  
12 to improve the accuracy and prevent detection of the dryland vegetation as wetlands, the threshold value should be  
13 determined carefully.

14

15 **Key words:** wetlands; spectral indices; Landsat 8 OLI; South Kalimantan

16

17 **Abstrak** Penelitian ini bertujuan untuk menginvestigasi indeks spektral yang paling akurat dalam ekstraksi  
18 informasi geospasial lahan basah di Kalimantan Selatan, Indonesia, sebagai sampel lahan basah di daerah tropis.  
19 Sepuluh indeks spektral dipilih untuk diuji kemampuannya dalam mengekstrak lahan basah, yaitu NDVI, NDWI,  
20 MNDWI, MNDWIs2, NDMI, WRI, NDPI, TCWT, AWEInsh, dan AWEIsh. Uji coba dilakukan pada Citra Landsat  
21 8 OLI path/row 117/062 and 117/063. Metode pembatasan nilai yang digunakan untuk memisahkan fitur lahan  
22 basah dari citra indeks spektral adalah metode Otsu. Hasil penelitian ini menunjukkan bahwa, secara umum  
23 MNDWIs2 merupakan indeks spektral yang paling optimal dalam ekstaksi lahan basah. Khususnya lahan basah  
24 tropis yang kaya dengan penutupan vegetasi hijau. Akan tetapi, MNDWIs2 sangat sensitif terhadap vegetasi rapat,  
25 fitur ini berpotensi untuk terdeteksi sebagai lahan basah. Lebih jauh, untuk meningkatkan akurasi dan mencegah  
26 vegetasi lahan kering terdeteksi sebagai lahan basah, nilai threshold harus ditentukan secara hati-hati.

27

28 **Kata kunci :** lahan basah; indeks spektral; Landsat 8 OLI; Kalimantan Selatan

29

30

31

32

33

1 **1. Introduction**

2

3 Wetlands are ecosystems saturated with water, either seasonally or permanently (EPA,  
4 2004). According to the Ramsar Convention on Wetlands 1993 (Matthews, 2013), based on the  
5 habitat, wetlands classified into marine and coastal wetlands, inland wetlands, and man-made  
6 wetlands. In the South Kalimantan Province, Indonesia, wetlands are one of the main features  
7 of the landscape.

8 The characteristics of tropical wetlands located in South Kalimantan Province are quite  
9 varied. For example, shallow water has a main characteristic, that is rich with green vegetation  
10 cover. On the deep water bodies (rivers) in this area, the waters have high enough levels of  
11 turbidity. In South Kalimantan, there are also quite a lot of open pit coal mining activities. The  
12 water inside the pits the rest of the coal mine will be mixed with the toxic minerals out of the  
13 mine. Hence, on the ground the pits look green. The green colour was formed distinct spectral  
14 signatures in multispectral optical imagery.

15 So far, various methods have been developed for the extraction of wetlands geospatial  
16 data automatically. For example, the Normalized Difference Water Index (NDWI) (McFeeters,  
17 1996), Modified Normalized Difference Water Index (MNDWI) (Xu, 2006), and so forth.  
18 NDWI and MNDWI are the two most popular spectral indices for the extraction of water  
19 features or wetland features. Their ability to extract open water features or wetland features has  
20 been tested from several research results (McFeeters, 1996; Xu, 2006; Li et al., 2013; Jiang et al.,  
21 2014; Ashraf and Nawaz, 2015; Das and Pal, 2016; Du et al., 2016). Besides NDWI or MNDWI,  
22 there are also a number of other spectral indices that can potentially be used to separate wetland  
23 features from other features.

24 In general, spectral indices such as NDWI or MNDWI are actually developed to  
25 separate open water features from other features. Some research indicates that the spectral  
26 indices are very accurate in extracting the boundaries of water features. For example, Xu (2006)  
27 proved that MNDWI more accurate than NDWI when applied to the three water features, i.e.  
28 lakes, oceans, and rivers. Similar to Xu (2006), Li et al. (2013) also found that MNDWI more  
29 accurate than NDWI to the TM, ETM +, and ALI imagery. To further test MNDWI's

**Commented [A1]:** Provide references here all the several research results you mentioned

**Commented [A2R1]:** We've provided all the necessary references, as you suggest.

1 capabilities, Jiang et al. (2014) developed the Automated Method for Extracting Rivers and  
2 Lakes (AMERL) for the extraction of rivers and lakes automatically from Landsat TM/ETM +.  
3 It was found that in general, MNDWI remains the best among the three other spectral indices.

4 Du et al. (2016) used MNDWI on the Sentinel-2 imagery, where the SWIR band of  
5 Sentinel-2 sharpened to 10 meters by a number of pan-sharpening method. Du et al. (2016)  
6 found that MNDWI with a combination of Principle Component Analysis (PCA) is more  
7 accurate than the NDWI and MNDWI with a combination of other pan-sharpening.

8 In other cases, other spectral indices have proven to be more accurate in extracting open  
9 water or wetlands features. For example, when Ashraf and Nawaz (2015) detect changes in the  
10 wetlands of the Baraila Lake (India) using four spectral indices, they found that in general  
11 NDWI is the most accurate method when verified using the field data. Similar to Ashraf and  
12 Nawaz, Das and Pal (2016) also found that NDWI was the most accurate spectral indices, when  
13 they compared six spectral indices. While Zhai et al. (2015) when comparing surface water  
14 extraction performances of four indices using Landsat TM and OLI, they found that  
15 Automated Water Extraction Index (AWEI) has the highest overall accuracy.

16 Kwak and Iwami (2014) developed a Modified Land Surface Water Index (MLSWI),  
17 they use it on flood inundation mapping using MODIS imagery and they test its accuracy using  
18 ALOS AVNIR 2. They found that MLSWI more accurate than Normalized Difference  
19 Vegetation Index (NDVI) and Land Surface Water Index (LSWI).

20 Several other researchers, such as Xie et al. (2016), they make further use of the spectral  
21 index to extract water features at the sub pixel level. They used MNDWI to separate the pure  
22 land pixel and pure water pixel in Spectral Mixture Analysis (SMA), for mapping the surface  
23 of the water of lakes and rivers automatically at sub pixel level.

24 Other researchers, such as Yang et al. (2015) combined spectral indices and single band  
25 multispectral imagery simultaneously to extract water features. They use a number of spectral  
26 indices and single band on Landsat 8 OLI to extract the water bodies. Those are, the single-  
27 band threshold in band 5, multiband spectral relationship b2, b3, b4, b5, NDVI, NDWI,  
28 MNDWI, Normalized Difference Built-up Index (NDBI), TCT, and Hue, Intensity and

1 Saturation (HIS). Where all of the spectral indices and bands are combined using deep learning  
2 algorithm, called Stacked Sparse Autoencoder (SSAE).

3 Although the spectral indices such as NDWI, MNDWI, NDVI, or others are accurate  
4 to separate open water features from other features, but it still needs to be studied further,  
5 whether these spectral indices are also accurate when used to separate wetland features from  
6 dryland features. Because, most of the wetlands in tropical areas has a spectral characteristic of  
7 water and green vegetation simultaneously. This research aimed to compare the accuracy of  
8 some of the spectral indices for optimizing the extraction of wetlands, by taking the case of the  
9 tropics area, that is, the South Kalimantan Province, Indonesia.

10

## 11 **2.The Methods**

12

### 13 2.1.Materials

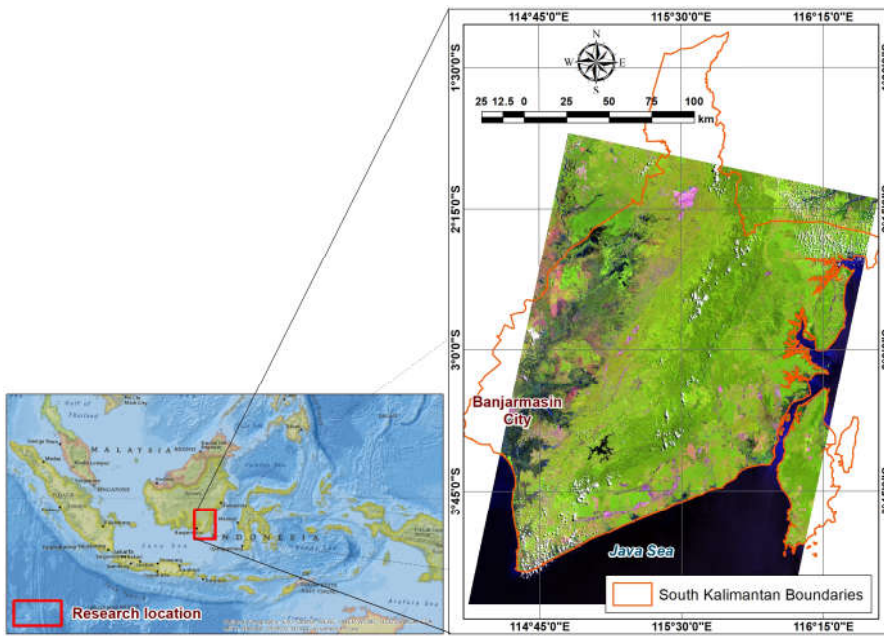
14

15 This research used two scenes of Landsat 8 OLI, the path/row 117/062 and 117/063, the  
16 acquisition on April 22, 2015. Most of the wetlands in South Kalimantan to be in these two  
17 scenes. Imageries acquiring date selected on April because it was the rainy season. Therefore,  
18 the condition of wetlands is at the maximum extends.

19 Overall spectral indices in this study applied to Landsat 8 Operational Land Imager (OLI)  
20 surface reflectance imageries. Atmospheric correction methods used in this research was the  
21 Dark Object Subtraction 4 (DOS4) (Chavez, 1988; Chavez, 1996; Zhang et al., 2010; Hong et  
22 al., 2014).



1



2

3

4

Figure 1. Research location

**Commented [A3]:** Provide coordinate to the image and also an inset. Some toponym will also be useful

**Commented [A4R3]:** We've fixed the image, and added some information according to your suggestions.

1 2.2. Water Indices

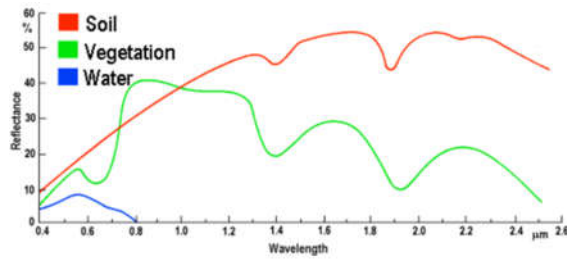
2

3 Water indices is a generic term for all of the spectral indices intended to sharpen the water  
4 features. One of the water indices which is most extensively used is NDWI (McFeeters, 1996).  
5 According to McFeeters (1996), if the pixel values of NDWI are positive means the water  
6 features. Thus, the value of 0 by McFeeters (1996) is set as the threshold value. NDWI  
7 formulated by McFeeters (1996) as follows:

8 
$$NDWI = \frac{\rho_g - \rho_n}{\rho_g + \rho_n}$$

9 Where:

- 10 •  $\rho_g$ : green band  
11 •  $\rho_n$ : near infrared band



12 Figure 2. Spectral value curves on three base surface features

13 Formatted: Centered, Indent: First line: 0 cm

14 Due to lack of NDWI in error detection features of the building, Xu (2006) modifying  
15 NDWI become MNDWI, by changing NIR band into SWIR. In this case, Xu (2006) using the  
16 SWIR1. The replacement of NIR with SWIR1 aims to suppress soil features (including  
17 buildings) in McFeeters's NDWI, because in the SWIR-1 soil reflectances are higher than NIR.  
18 As seen in the spectral value curves in Figure 2.

19 
$$MNDWI = \frac{\rho_g - \rho_s}{\rho_g + \rho_s}$$

20 Where:

- 21 •  $\rho_s$ : shortwave infrared band

1 In this research, we were also adding a water index modified from MNDWI, by  
 2 replacing the SWIR1 in MNDWI with SWIR2. Thus, the MNDWI<sub>s2</sub> formula that we modified  
 3 in this research is as follows:

$$4 \quad \text{MNDWI}_{s2} = \frac{\rho_g - \rho_{s2}}{\rho_g + \rho_{s2}}$$

5 Where:

- 6 •  $\rho_{s2}$ : shortwave infrared 2 band

7 Xu (2006) replaces NIR with SWIR1 in NDWI (McFeeters, 1996) with the aim to  
 8 suppress building features, because in the SWIR1, soil and building reflectance higher than  
 9 NIR. In this research, we replace SWIR1 into SWIR2, with the aim to capture the spectral  
 10 vegetation located above the wetlands. Because vegetation reflectance in SWIR2 is not as high  
 11 as SWIR1 and NIR.

12 Besides NDWI, MNDWI and MNDWI<sub>s2</sub>, there are various other spectral indices to be  
 13 tested in this research. Table 1 shows the full list of spectral indices which are capabilities will  
 14 be compared in this study.

15  
16  
17  
18  
19  
20  
21  
22  
23  
24  
25 Table 1. List of the spectral indices used in the research

No.	Spectral Indices	Formula	Value of Water	Reference
1.	Normalized Vegetation Index	Difference $\frac{\rho_n - \rho_r}{\rho_n + \rho_r}$	Negative	Rouse et al. (1973)

**Commented [A5]:** NDWI, MNDWI, and MNDWI<sub>s2</sub> were explained in more detail. Why other indices are not?

**Commented [A6R5]:** In the methods, NDWI is a formula that is the basis for Xu (2006) in developing MNDWI, while MNDWI itself is a formula that is used as the basis for developing a new formula in this research, namely MNDWI<sub>s2</sub>. Of course, MNDWI<sub>s2</sub> is a formula specifically developed in this research. Meanwhile, other indices are only cited from a number of literature, without any further development and not directly related to the development of a new formula in this research. These are the reasons why only NDWI, MNDWI, and MNDWI<sub>s2</sub> are discussed in detail in the Methods section.

2.	NDWI	Normalized Difference Water Index	$\frac{\rho_g - \rho_n}{\rho_g + \rho_n}$	Positive	McFeeters (1996)
3.	MNDWI	Modified Normalized Difference Water Index	$\frac{\rho_g - \rho_{s1}}{\rho_g + \rho_{s1}}$	Positive	Xu (2006)
4.	MNDWI <sub>s2</sub>	Modified Normalized Difference Water Index with SWIR2	$\frac{\rho_g - \rho_{s2}}{\rho_g + \rho_{s2}}$	Positive	This research
5.	NDMI	Normalized Difference Moisture Index	$\frac{\rho_n - \rho_s}{\rho_n + \rho_s}$	Positive	Gao (1996); Wilson and Sader (2002); Xiao et al. (2002); Lacaux et al. (2007)
6.	WRI	Water Ratio Index	$\frac{\rho_g + \rho_r}{\rho_n + \rho_s}$	Greater than 1	Shen (2010)
7.	NDPI	Normalized Difference Pond Index	$\frac{\rho_s - \rho_g}{\rho_s + \rho_g}$	Negative	Lacaux et al. (2007)
8.	TCWT	Tasseled-Cap Wetness Transformation	$0.1877\rho_{ca} + 0.2097\rho_b + 0.2038\rho_g + 0.1017\rho_r + 0.0685\rho_n - 0.7460\rho_{s1} - 0.5548\rho_{s2}$	-	Li et al. (2015)
9.	AWEI <sub>noh</sub>	Automated Water Extraction Index with no shadow	$4(\rho_g - \rho_{s1}) - (0.25\rho_n + 2.75\rho_{s2})$	-	Feyisa et al. (2014)
10.	AWEI <sub>sh</sub>	Automated Water Extraction Index with shadow	$\rho_b + 2.5\rho_g - 1.5(\rho_n + \rho_{s1}) - 0.25\rho_{s2}$	-	Feyisa et al. (2014)

1

## 2 Information:

- 3 •  $\rho_{ca}$ : aerosol coastal bands (bands 1 Landsat 8)
- 4 •  $\rho_b$ : blue band (band 2 Landsat 8)
- 5 •  $\rho_g$ : green band (band 3 Landsat 8)
- 6 •  $\rho_r$ : red band (band 4 Landsat 8)
- 7 •  $\rho_n$ : near infrared band (band 5 Landsat 8)
- 8 •  $\rho_s$ : shortwave infrared band (band 6 or 7 Landsat 8)
- 9 •  $\rho_{s1}$ : shortwave infrared 1 band (band 6 Landsat 8)
- 10 •  $\rho_{s2}$ : shortwave infrared 2 band (band 7 Landsat 8)

11

## 12 2.3. Wetlands Extraction



1

2 For the purpose of separating wetland features and non-wetland features from spectral  
3 indices imageries, some literature recommends a specific threshold value. However, in certain  
4 cases, the threshold value is often not optimal. According to Ji et al. (2009), the NDWI threshold  
5 is not a constant value, an appropriate NDWI threshold needs to be determined.

6 There are several methods of automatic thresholding used to classify digital imageries. One  
7 of the most popular automatic thresholding methods is Otsu thresholding (Otsu, 1979). In this  
8 research, the Otsu thresholding process is done using free open source public domain software,  
9 namely ImageJ (Schneider et al., 2012; Schindelin et al., 2015).

10

#### 11 2.4. Accuracy Assessment

12

13 Accuracy assessment was conducted using the Confusion Matrix (Stehman and  
14 Czaplewski, 1997), using a number of sample locations were selected purposively. In this case,  
15 the location of the sample represents multiple characters wetlands in South Kalimantan.

16 Namely, ~~mangroves, salt marshes, rivers, freshwater lakes, freshwater marshes, peatlands,~~  
17 ~~peatswamps, shrub-dominated wetlands, tree-dominated wetlands, fish pond, farm ponds,~~  
18 ~~swamp rice field, irrigated land, and deep water (reservoirs, canals, and coal open pits)~~  
19 mangroves, salt marshes, deep water (include reservoirs, canals, and coal open pits), peatlands,  
20 peatswamps, shrub-dominated wetlands, tree-dominated wetlands, fish ponds, swamp rice  
21 fields, irrigated land, freshwater marshes, and freshwater lake. ~~So~~Therefore, there are a total of  
22 1512 samples for wetland classes. Meanwhile, the number of sample pixels for each wetlands  
23 class are 4,495, 4,245, 10,904, 2,309, 6,739, 14,396, 2,265, 3,217, 6,597, 2,307, 5,020 and 2,330  
24 pixels respectively.

25 For the purpose of assessing the deeper capabilities of each spectral index, the sample  
26 locations were also chosen purposively on various dryland features that have the potential to  
27 be detected as wetlands. In the appointment of the samples, the method used is knowledge-  
28 based. There are a total of 10 samples for dryland classes. Namely, built-up lands, barelands,  
29 grass, roads, dryland forest, dryland farms, garden (include mix garden, rubber plants, palm

oil), and shrub and bushes. The number of sample pixels for each of these drylands classes is are 1,236, 4,003, 2,377, 323, 6,445, 2,169, 4,694, and 8,075 pixels, respectively.

**Commented [A7]:** How many samples are for each of this class?

**Commented [A8R7]:** We've provided information on the number of sample pixels for each wetlands and drylands class.

A confusion matrix is constructed for each spectral index, for example for NDWI a confusion matrix will be constructed, as well as for other spectral indices. The first accuracy assessment is done in general, where each spectral index is tested for its ability to separate wetlands and drylands. From the resulting confusion matrix, the overall accuracy, kappa coefficient, producer's accuracy, user's accuracy, commission error, and omission error are calculated to obtain quantitative descriptions of the capabilities of each spectral index. The recapitulation results of overall accuracy, kappa coefficient, producer's accuracy, user's accuracy, commission error, and omission errors can be seen in Table 2.

Furthermore, to test the ability of each spectral index to recognize each wetland class, a confusion matrix was constructed for each spectral index in each wetland class. For example, for NDWI in the Mangroves class, a confusion matrix will be constructed. Furthermore, from the resulting confusion matrix the Producer's Accuracy value will be taken, to obtain a quantitative description of the ability of the spectral index to recognize one type of wetland. So we will get an overview of NDWI's ability to recognize Mangroves for example. Recapitulation of producer's accuracy values for each spectral index in each wetland class can be seen in Table 3.

**Commented [A9]:** Why do you need to create confusion matrix for each wetland class and dryland class? One confusion matrix can involve all the class altogether.

**Commented [A10R9]:** One confusion matrix can involve all the class altogether, this applies for example in the case of multispectral classification. However, in this research, spectral indices such as NDWI or others, are relatively difficult, or even completely unable to distinguish between Wetland classes. Given the spectral indices such as NDWI are only one band, not a multispectral imagery.

The final step, to test the ability of each spectral index to avoid the detection of dryland features, a confusion matrix is constructed for each spectral index in each dryland class. For example, for NDWI in the Dryland Forest class, a confusion matrix will be constructed. Furthermore, from the resulting confusion matrix the Commission Error value will be taken, to obtain a quantitative description of the ability of the spectral index to avoid the detection of one type of dryland. So that a description of NDWI's ability to avoid detecting Dryland Forest as a wetland will be obtained, for example. Recapitulation of commission error values for each spectral index in each dryland class can be seen in Table 4.

One NDWI band is difficult to distinguish between Mangroves and Peatlands, for example. While Peatlands in the case of this research are overgrown with dense forests whose spectral characters are similar to mangroves. We can confirm that the range of values between Mangroves and Peatlands in NDWI will be similar.

Like the Normalized Difference Vegetation Index (NDVI) which can only separate between vegetation and non-vegetation, so in the context of this research, spectral indices such as NDWI are only considered to be able to separate between Wetlands and Drylands. This also underlies the use of Otsu thresholding as a method of separating the features in this research. Where Otsu thresholding can only produce 2 classes in one classification process.

So when testing Mangroves on NDWI, for example, Mangroves will be tested with Non mangroves (the Drylands). When testing Peatlands on NDWI, Peatlands will be tested with Non peatlands (the Drylands). It is not possible to test Mangroves and Peatlands simultaneously on a single NDWI index, if such a test were forced the error would be very large.

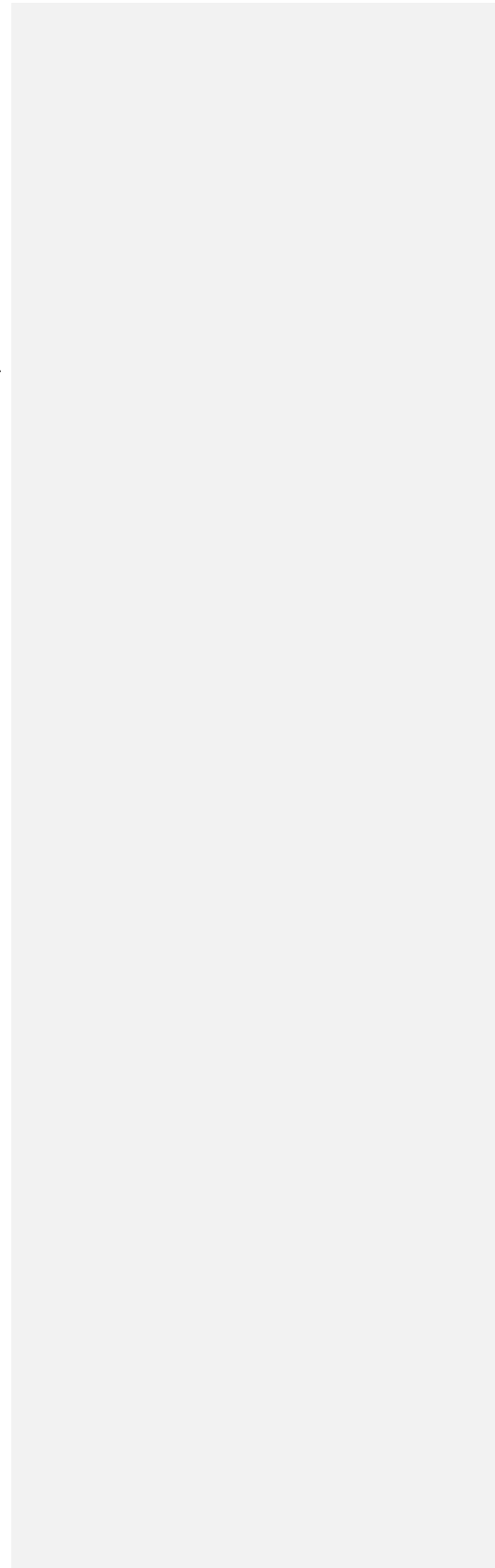
The same is true of Dryland classes. NDWI certainly cannot distinguish between Built-up lands and Barelands for example.

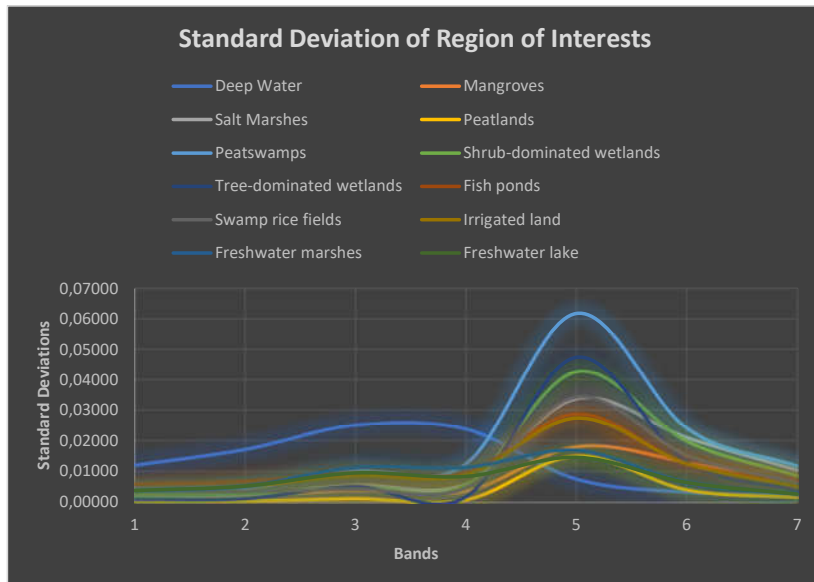
A brief explanation of this has been provided in the Results and Discussion section. See page 12 line 1 to 9.

### 3.Result and Discussion

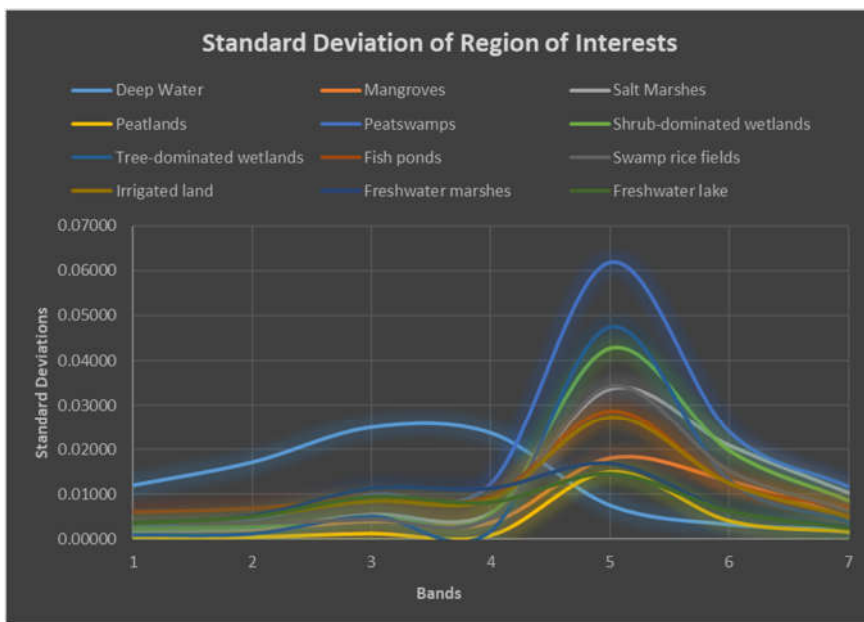
1 Visual appearance of wetlands in South Kalimantan varies in tone/colour on  
2 multispectral satellite imageries such as Landsat 8. This shows quite a high degree of variation  
3 in spectral value of each type of wetlands. In the accuracy assessment, the samples were made  
4 for each type of wetlands. For the purpose to ensure that variations in the class of all wetlands  
5 are represented as possible, Region of Interest (ROI) made for every wetland types are  
6 distributed in several different locations. Figure 32 shows the Standard Deviation (SD) ROI of  
7 all wetlands in each band Landsat 8 OLI.

8





1



2

3

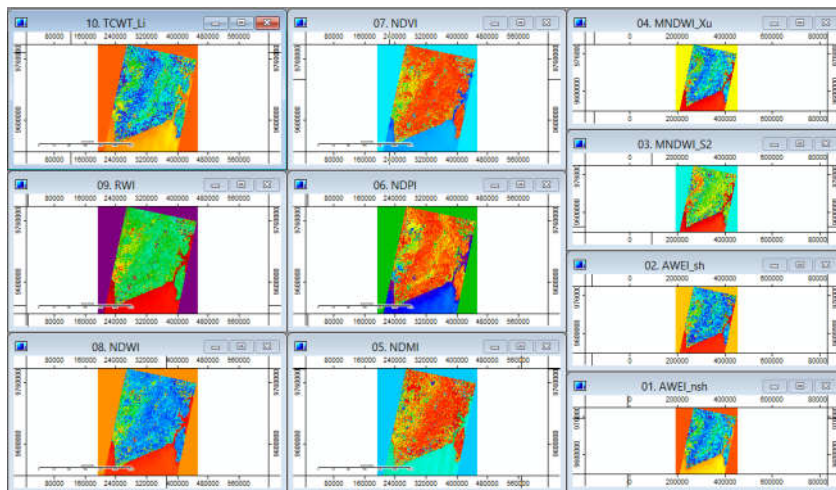
Figure 23. Standard Deviation of all wetlands types ROI in each band of Landsat 8 OLI

4

1 Of course, spectral indices such as NDWI cannot distinguish between mangroves and  
 2 peat swamps, for example. Because spectral indices such as NDWI are only designed to  
 3 recognize and separate water/wetlands from dryland features. While mangroves and  
 4 peat swamps are both wetland features. In fact, the thresholding imageries results of spectral  
 5 indices contains only two classes, namely Wetlands and Non-wetlands. But for the sake of  
 6 accuracy assessment, the accuracy assessment ROI is made on every types of wetlands in the  
 7 research locations. It is intended that the spectral character of each wetland represented, and  
 8 to provide an overview of each spectral indices extraction capabilities of each type of wetlands.

9 When the overall accuracy of the assessment is done, all types of wetland features are  
 10 combined into a single class, namely the Wetlands. And all types of drylands features are  
 11 combined into a single class, namely Non-wetlands. Figure 43 shows the results of the  
 12 transformation of spectral indices were selected in this research. While Table 2 shows the  
 13 results of Otsu thresholding and accuracy assessment results of each spectral index using the  
 14 Confusion Matrix.

15



16 Figure 34. The result of the transformation of spectral indices on the SAGA application

17

18 Table 2. The Otsu thresholding and accuracy assessment results using the Confusion Matrix

19

No.	Spectral Indices	Otsu Threshold	OA (%)	Kappa	PA (%)	UA (%)	CE (%)	OE (%)
1.	NDVI	≤ 0.21	44.20	0.18	43.59	88.49	11.51	56.41
2.	NDWI	≥ -0.17	45.19	0.19	44.84	89.73	10.27	55.16
3.	MNDWI	≥ -0.06	68.59	0.50	84.22	99.74	0.26	15.78
4.	MNDWI <sub>k2</sub>	≥ 0.07	74.82	0.59	97.54	98.13	1.87	2.46
5.	NDMI	≥ 0.13	32.68	-0.14	38.86	60.48	39.52	61.14
6.	WRI	≥ 0.51	73.02	0.50	98.61	84.61	15.39	1.39
7.	NDPI	≤ 0.05	65.02	0.45	77.15	99.85	0.15	22.85
8.	TCWT	≤ 0.45	59.32	0.37	66.37	99.95	0.05	33.63
9.	AWEI <sub>nh</sub>	≥ -0.55	54.15	0.31	57.11	99.99	0.01	42.89
10.	AWEI <sub>sh</sub>	≥ -0.20	62.46	0.41	72.53	98.87	1.13	27.47

**Commented [A11]:** Explain the abbreviation in the caption

**Commented [A12R11]:** The abbreviations in the caption are already explained below the table.

**Commented [A13]:** Explain the abbreviation in the caption

**Commented [A14R13]:** The abbreviations in the caption are already explained below the table.

1

2 Information:

- 3
- 4 • OA: Overall Accuracy
  - 5 • PA: Producer's Accuracy
  - 6 • UA: User's Accuracy
  - 7 • CE: Commission Error
  - 8 • OE: Omission Error

9 The use of a single method based on the spectral indices looks like it is not so qualified  
10 in the extraction of wetlands, as well as the extraction of the open water features. Because  
11 somehow wetlands are the composite features, which are mainly composed of water and  
12 vegetation. Islam et al. (2014) research results are not much different from the results of this  
13 research. Islam et al. (2014) found the spectral indices for mapping wetlands have the highest  
14 overall accuracy of 78%.

15 Although in this research was found the spectral indices which has overall accuracy  
16 above 70%, but when seen from the small Kappa coefficient, it seems overall accuracy was more  
17 to conditionally. However, this study is sufficient to provide an overview comparison of the  
18 relative accuracy of each spectral index, if used specifically for the delineation of wetland  
19 features.

1 In general, MNDWI, MNDWI<sub>s2</sub>, and WRI, are three spectral indices overall most  
 2 accurately. However, the value of OA and Kappa both is not enough to describe the accuracy  
 3 or optimality a digital imagery transformation method in extracting particular features. From  
 4 OA has been seen that MNDWI<sub>s2</sub> implemented in this study is more accurate than MNDWI.  
 5 However, when seen from the CE, map of wetlands resulting from MNDWI a little more  
 6 accurate. For the next, we want to see, in which object successes and failures of each spectral  
 7 indices located. Based on this, we examine the PA on each of the spectral indices, for each type  
 8 of wetlands.

9 In testing the PA, each ROI at each wetland type tested separately on each thresholding  
 10 results imagery of spectral indices. This is because, each thresholding results imagery of spectral  
 11 indices does not distinguish among types of wetlands. Table 3 shows the PA for each spectral  
 12 index and each wetland type.

13 **Table 3. Producer's accuracy for each spectral index and each wetlands type**

No.	Spectral Indices	Producer's Accuracy (%)											
		Dw	Mg	Sm	Pl	Ps	Sw	Tw	Fp	Sr	Il	Fm	Fl
1.	NDVI	100	0	72.16	0	87.10	6.29	0	98.91	89.77	99.13	99.94	99.87
2.	NDWI	100	0	77.93	0	87.02	8.4	0	99.25	92.92	99.61	99.96	99.91
3.	MNDWI	100	92.77	98.87	0	98.71	90.28	41.41	99.97	99.94	100	100	100
4.	MNDWI <sub>s2</sub>	100	100	96.11	99.52	97.91	97.19	99.65	99.81	99.97	100	100	100
5.	NDMI	0	100	89.61	100	24.69	99.89	100	20.14	80.39	45.69	6.99	2.40
6.	WRI	100	100	100	89.39	100	98.81	98.41	100	100	100	100	100
7.	NDPI	100	86.01	97.17	0	97.95	77.71	18.23	99.94	99.58	100	100	100
8.	TCWT	100	89.39	91.24	0	96.96	47.97	11.79	99.84	98.38	100	99.98	100
9.	AWEI <sub>mh</sub>	100	69.97	88.46	0	95.87	25.47	5.92	99.88	96.38	100	100	100
10.	AWEI <sub>sh</sub>	100	5.81	99.95	0	97.92	88.55	15.45	100	99.83	100	100	100

**Commented [A15]:** What about the user's accuracy analysis?

**Commented [A16R15]:** User's Accuracy (UA) analyzes are represented by Commission Error (CE) in Table 4.

CE + UA = 100%, so if there is a CE of 15% for example, it means that the UA is 85%.

14

15 Information:

- 16 • Dw: Deep water (include river, reservoir, dam, and coal mining pits)
- 17 • Mg: Mangroves
- 18 • Sm: Salt marshes
- 19 • Pl: Peatlands
- 20 • Ps: Peatswamps

- 1 • Sw: Shrub-dominated wetlands
- 2 • Tw: Tree-dominated wetlands
- 3 • Fp: Fish ponds
- 4 • Sr: Swamp rice fields
- 5 • Il: Irrigated land
- 6 • Fm: Freshwater marshes
- 7 • Fl: Freshwater lake

8  
9 The entire spectral indices, except NDMI, do not have a problem when extracting the  
10 deep water features. Exclusively for NDMI, it looks like it is not appropriate to extract the open  
11 water features. NDMI successfully on lands that are quite dense vegetation cover. This is  
12 because NDMI is designed to detect moisture vegetation canopy (Gao, 1996; Jackson et al.,  
13 2004).

14 NDVI and NDWI have the same character in separating wetland features from other  
15 features. Both can be said to be successful wetlands extracting, especially wetlands with high  
16 concentration of water. However, they completely fail in identifying wetlands with dense  
17 vegetation, such as mangrove or peatlands. This is because NDVI and NDWI using the same  
18 NIR band, where vegetation will have a contrasting difference with water in NIR.

19 NDPI and TCWT ability in recognizing wetlands is almost similar to NDVI and NDWI.  
20 Only NDPI more successful in recognizing wetlands with dense canopy. Compared to NDPI,  
21 TCWT worse at recognizing wetlands topped with vegetations with a bright hue, which are  
22 commonly found in shrub-dominated wetlands and freshwater marshes.  $AWEI_{nsh}$  ability in  
23 recognizing wetlands also similar to NDPI and TCWT. However,  $AWEI_{nsh}$  failures in  
24 identifying wetlands with dense canopy worse than TCWT.  $AWEI_{sh}$  even worse at recognizing  
25 wetlands with dense canopy. Although overall,  $AWEI_{sh}$  better than  $AWEI_{nsh}$ .

26 MNDWI and  $MNDWI_{s2}$  quite successful in identifying wetlands. Except MNDWI  
27 failed to recognize the peatlands and tree-dominated wetlands. Where these two features are  
28 wetlands with dense canopy. Not so with  $MNDWI_{s2}$  capable of recognizing peatlands and tree-  
29 dominated wetlands with almost 100% accuracy. Based on this fact, our assumption when



1 shifting SWIR1 into SWIR2 on MNDWI has been proven. MNDWI<sub>s2</sub> able to recognize the  
 2 characteristic spectral features that have water and vegetation spectral characteristics as well  
 3 with better.

4 The ability of spectral indices for identifying wetlands (PA), is not directly indicated its  
 5 ability to extract the wetlands. Because in automatic features extraction, the goal is not only  
 6 that the method is able to recognize the desired features, but also how the method avoids  
 7 recognizing other features. That is why, in this research we also tested the CE. In this case, CE  
 8 tested using dryland features in research locations. These dryland features have been selected  
 9 to investigate in which object the spectral indices encountered an error detection as wetlands.

10 Technical testing of CE is similar to the PA, which is any ROI dryland features tested  
 11 separately on each thresholding results imagery of spectral indices. Table 4 shows the CE for  
 12 each spectral index and each wetland type.

14 Table 4. Commission error for each spectral index and each drylands feature

No.	Spectral Indices	Commission Error (%)							
		Bu	Bl	Gr	R	F	Df	Gd	Sb
1.	NDVI	71.76	98.13	0	87.62	0	0	0	0
2.	NDWI	55.10	90.43	0	85.14	0	0	0	0
3.	MNDWI	0	0.05	0	37.15	0.47	0	0	0
4.	MNDWI <sub>s2</sub>	0	0	0	0	18.65	0.05	0	0.15
5.	NDMI	1.70	0.10	100	5.57	100	91.47	100	100
6.	WRI	99.92	99.83	0	100	69.84	33.38	0.64	10.58
7.	NDPI	0	0.05	0	21.98	0.16	0	0	0
8.	TCWT	0	0	0	0	0.39	0	0	0
9.	AWEI <sub>nsh</sub>	0	0	0	0	0.06	0	0	0
10.	AWEI <sub>sh</sub>	20.47	1.27	0	95.05	0.14	0	0	0

15

16 Information:

- 17 • Bu: Built-up lands
- 18 • Bl: Barelands
- 19 • Gr: Grass

- 1 • R: Roads
- 2 • F: Dryland forest
- 3 • Df: Dryland farms
- 4 • Gd: Garden (mixgarden, rubber plants, palm oil)
- 5 • Sb: Shrub and bushes

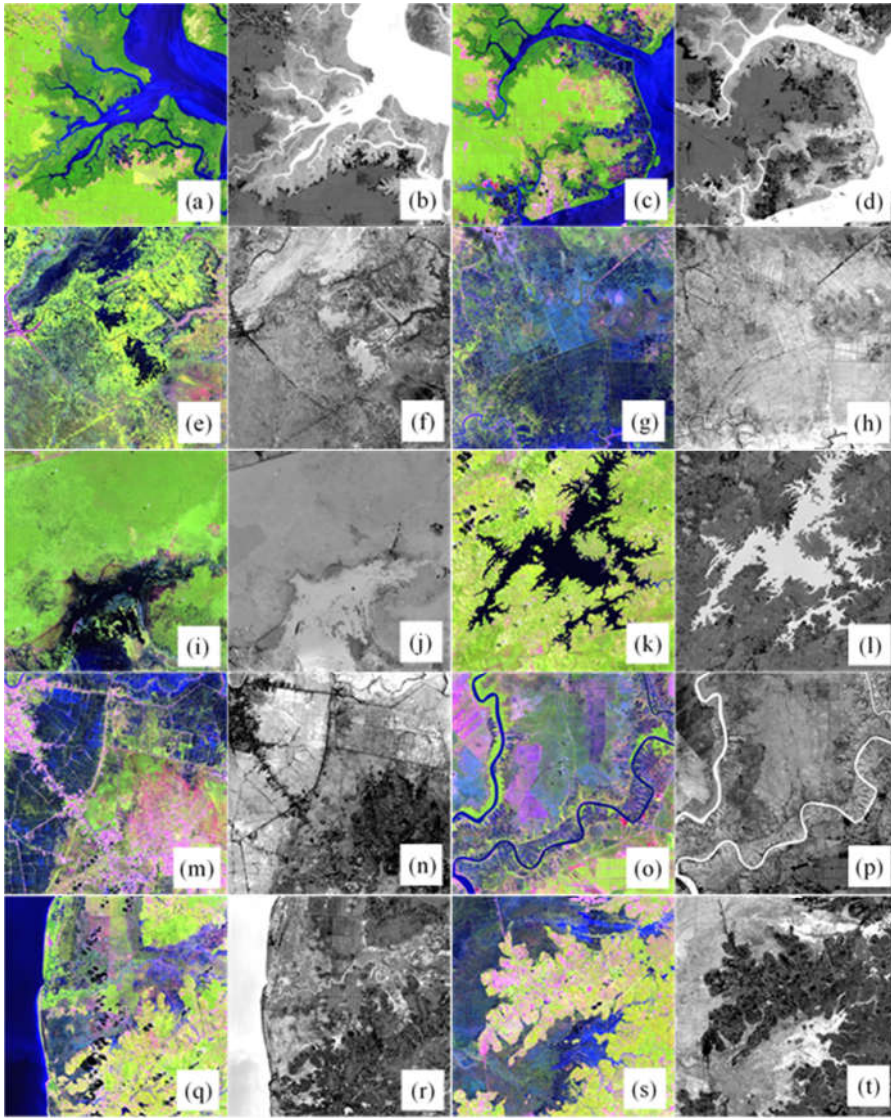
6  
7 Based on Table 3 and Table 4, it appears that NDMI cannot distinguish between dryland  
8 forest and wetlands forest. Likewise, the overall WRI has high accuracy, and as if it is able to  
9 recognize all types of wetlands with good, it fails on a number of dryland features and take it as  
10 wetlands. This translates into an overall accuracy WRI does not mean anything, because in fact  
11 it could not distinguish well between wetland features and some dryland features.

12 NDVI and NDWI that have the same character, they are also sensitive to built-up lands,  
13 roads, and barelands. NDPI better than NDVI and NDWI in distinguishing between built-up  
14 lands or barelands and wetlands. However, NDPI also slightly failed in distinguishing the paved  
15 roads to the wetlands. TCWT and AWEInsh are two spectral indices of the best in minimizing  
16 error detection wetlands. Since both spectral indices have the lowest CE. Different from  
17 AWEInsh, AWEIsh disadvantaged in distinguishing between the paved roads to the wetlands.

18 MNDWI turned out to be problematic with paved roads in the wetlands. However,  
19 MNDWI failure to distinguish between wetlands and paved roads here occurs only as a result  
20 of Otsu thresholding is negative. MNDWIs2 was almost no problems with all the dryland  
21 features, except dryland forests. Furthermore, MNDWIs2 troubled with all the dense and dark  
22 vegetation features. As with all other spectral indices, MNDWIs2 also failed to recognize the  
23 wetlands on which there are very bright vegetation features.

24 Based on the results of the accuracy assessment, it appears that MNDWIs2 is the most  
25 optimal spectral indices for the extraction of wetlands. Some experts previously also been  
26 modified MNDWI using SWIR2. Among them was Chen et al. (2005), Ji et al. (2009), Boschetti  
27 et al. (2014), and Islam et al. (2014).

28



1  
 2 Figure 45. Comparison between Landsat 8 OLI composite 654 and  $MNDW_{s2}$   
 3 (a) and (b) mangrove; (c) and (d) fishpond; (e) and (f) freshwater lake and freshwater  
 4 marshes; (g) and (h) irrigated land; (i) and (j) peatlands and peatswamps; (k) and (l) deep  
 5 clear water (reservoir); (m) and (n) swamp rice fields and tree-dominated wetlands; (o) and

1 (p) deep turbid water (river); (q) and (r) salt marshes; and (s) and (t) shrub-dominated  
 2 wetlands.

3 MNDWI uses the green band and SWIR1 band. In SWIR1, vegetation features have a  
 4 much higher reflectance value than in green. We can see this fact in wetlands which are  
 5 dominated by dense vegetation, as seen in Table 5 and Figure 65. Table 5 and Figure 65 are  
 6 constructed using the mangroves, peatlands, and tree-dominated wetlands samples from this  
 7 research. Where in the wetlands which are dominated by dense vegetation, such as mangroves,  
 8 peatlands, and tree-dominated wetlands, reflectance values for SWIR1 are higher than  
 9 reflectance values for green. As a result, green subtraction with SWIR1 in MNDWI causes  
 10 vegetation features to be depressed. So that wetlands with dense vegetation are not detected as  
 11 wetland features in MNDWI.

12 Not so with MNDWI2 which uses green bands and SWIR2 bands. Where in SWIR2,  
 13 the reflectance value of vegetation features is not as high as in SWIR1. Even the spectral value  
 14 tends to be similar to lower than green. We can also see this fact in Table 5 and Figure 65.  
 15 Where in the wetlands which are dominated by dense vegetation, the reflectance values for  
 16 SWIR2 are lower than reflectance values for SWIR1 or green. Thus, green subtraction using  
 17 SWIR2 will not suppress vegetation features as in MNDWI. As a result, wetlands with dense  
 18 vegetation can still be detected in MNDWI2. This makes MNDWI2 the most optimal spectral  
 19 index in extracting vegetation-rich wetlands such as tropical wetlands. Figure 54 shows the  
 20 comparison between Landsat 8 OLI composite 654 imageries and the MNDWI2 imageries.

21 Table 5. Average reflectance values on each Landsat 8 band on three types of dense vegetation  
 22 wetlands

	Average reflectance values on each Landsat 8 band						
	Coastal/Aerosol	Blue	Green	Red	NIR	SWIR1	SWIR2
Mangroves	0.2259	0.2024	0.187	0.1609	0.393	0.1953	0.1476
Peatlands	0.2324	0.2082	0.1938	0.1639	0.4483	0.2341	0.1608
Tree-dominated wetlands	0.2342	0.2106	0.2014	0.1688	0.4041	0.2308	0.1614
Average	0.2308	0.2071	0.1941	0.1645	0.4151	0.2201	0.1566

**Commented [A17]:** I don't really get it. To my knowledge, healthy vegetation with high leaf moisture content should have a low reflectance on SWIR 1 and SWIR 2. This is especially true in wetlands such as mangrove. So, why did you mention that SWIR 1 reflectance is much higher than green? Can you please provide the figure showing the spectral response of the objects you classified.

**Commented [A18R17]:** The data are in Table 5 and Figure 6. Where Table 5 and Figure 6 are constructed using the Mangroves, Peatlands, and Tree-dominated wetlands samples from this research. From Table 5 it can be seen that for the three types of wetlands with dense vegetation, the spectral values for SWIR1 were higher than for Green.

23

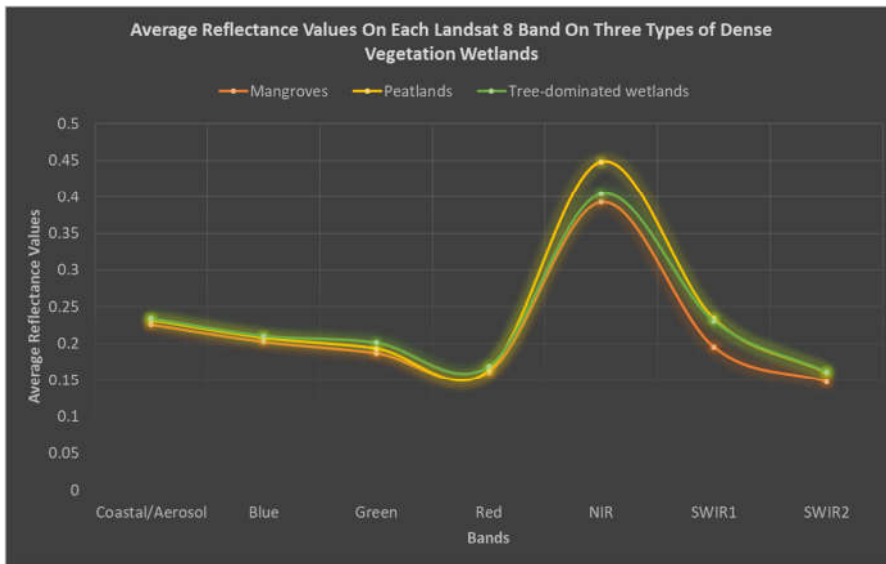


Figure 56. Average reflectance values on each Landsat 8 band on three types of dense vegetation wetlands

Formatted: Centered

MNDWI<sub>s2</sub> can recognize deep water features as well as MNDWI. This is the implication of the use of green band that is able to capture reflections of open water features with high intensity, which is subtracted using ~~SWIR1/SWIR2~~ band that do not capture reflections of open water features. Compared to MNDWI, MNDWI<sub>s2</sub> still able to capture the reflection of background water or soil moisture beneath the canopy. In the MNDWI<sub>s2</sub> imagery, built-up lands, road, and barelands, appear darker than MNDWI imagery. It is an implication of the subtraction with SWIR2. This can cause the dominant soil in wetlands background features will bring potential ~~OE~~ omission error to MNDWI<sub>s2</sub>.

Commented [A19]: SWIR 1 or SWIR 2? It should be SWIR 2 right?

Commented [A20R19]: Yes, the correct one is SWIR2, we made a typo in this term.

Commented [A21]: What is OE?

Commented [A22R21]: OE is Omission Error. We've replaced the acronym with the abbreviation.

#### 4. Conclusion

Based on this research, the spectral indices recorded the most accurate and optimal in extracting wetlands is MNDWI<sub>s2</sub>. But MNDWI<sub>s2</sub> should be used wisely, given MNDWI<sub>s2</sub> very sensitive to dense vegetations. MNDWI<sub>s2</sub> also has potential error in wetlands with dominant

1 soil background features. MNDWI<sub>s2</sub> not only able to recognize the deep waters as well as  
2 MNDWI, but still able to capture the wetlands with vegetations on it.

3 Like MNDWI, MNDWI<sub>s2</sub> also uses a green band. In ~~spectral library spectral value~~  
4 ~~curves~~, green band has the highest reflectance value of water features among all spectral bands.  
5 So that open water features can be detected properly by MNDWI<sub>s2</sub>. The advantage of  
6 MNDWI<sub>s2</sub> is the use of SWIR2, where in ~~spectral library spectral value curves~~ SWIR2 band has  
7 a lower reflectance value of vegetation. So that subtraction green with SWIR2 will not cause  
8 vegetation features to become depressed as in MNDWI.

9 The ability of MNDWI<sub>s2</sub> in detecting peatlands with dense canopy as wetlands was very  
10 impressive. ~~Given the peatlands actually not always saturated with water on the surface, most~~  
11 ~~of them just has a very high water content in the ground with very high moisture surfaces.~~  
12 ~~However, this condition is enough to make SWIR2 have very low reflections, so that green~~  
13 ~~subtraction using SWIR2 will enhance moist surfaces such as peatlands.~~ ~~Will MNDWI<sub>s2</sub> be~~  
14 ~~considered as Normalized Difference Wetlands Index (NDWLI)? Well, of course, more~~  
15 ~~research needs to be done to investigate.~~

16 Based on the results of this research, MNDWI<sub>s2</sub> can be considered as the Normalized  
17 Difference Wetlands Index (NDWLI). Of course, further research are needed to verify the  
18 accuracy of the NDWLI formula. Especially if the formula be examined in other regions with  
19 different conditions, or be examined on other multispectral imageries.

## 21 Acknowledgement

22  
23 The author<sub>s</sub> thank to the United States Geological Survey (USGS) for providing the  
24 Landsat 8 OLI imageries for free, as a main data of this research. This research was funded by  
25 the Spatial Data Infrastructure Development Center (PPIDS), University of Lambung  
26 Mangkurat. Digital image processing in this research was carried out at the Remote Sensing  
27 and Geographic Information System Laboratory, Faculty of Forestry, University of Lambung  
28 Mangkurat, Banjarbaru.

29

**Commented [A23]:** Why not blue band?  
Also, which spectral library? You did not discuss anything about spectral library in the manuscript before.

**Commented [A24R23]:** The green band has the highest reflectance value of water features, as seen in the spectral value curves in Figure 2 (The Methods section).

**Commented [A25]:** But this condition is enough to make SWIR1 and SWIR2 to reflect very lowly

**Commented [A26R25]:** Yes, it is true. We have added the statement in the paragraph. However, since in this paragraph we only discuss MNDWI<sub>s2</sub> that use SWIR2, so we only include SWIR2 in our statement in this paragraph.

**Commented [A27]:** Don't use such sentence

**Commented [A28R27]:** We've refined the sentence, and tried to propose new sentence forms in the next paragraph without changing the information.

1  
2  
3  
4  
5  
6  
7  
8  
9  
10  
11  
12  
13  
14  
15  
16  
17  
18  
19  
20  
21  
22  
23  
24  
25  
26  
27

**References**

Ashraf, M. and Nawaz, R..(2015). A Comparison of Change Detection Analyses Using Different Band Algebras for Baraila Wetland with Nasa’s Multi-Temporal Landsat Dataset. *Journal of Geographic Information System*, 7, 1-19.

Boschetti, M., Nutini, F., Manfron, G., Brivio, P.A., Nelson, A..(2014). Comparative Analysis of Normalised Difference Spectral Indices Derived from MODIS for Detecting Surface Water in Flooded Rice Cropping Systems. *PLoS ONE* 9 (2), e88741. doi:10.1371/journal.pone.0088741

Chavez, P.S..(1988). An Improved Dark-Object Subtraction Technique for Atmospheric Scattering Correction of Multispectral Data. *Remote Sensing of Environment*, 24, 459–479.

Chavez, P.S..(1996). Image-based Atmospheric Corrections—Revisited and Improved. *Photogrammetric Engineering and Remote Sensing*, 62, 1025–1036.

Chen, D., Huang, J., and Jackson, T.J..(2005). Vegetation Water Content Estimation for Corn and Soybeans Using Spectral Indices Derived from MODIS Near- and Short-wave Infrared Bands. *Remote Sensing of Environment*, 98, 225-236.

Conrad, O., Bechtel, B., Bock, M., Dietrich, H., Fischer, E., Gerlitz, L., Wehberg, J., Wichmann, V., and Boehner, J..(2015). System for Automated Geoscientific Analyses (SAGA) v. 2.1.4.. *Geoscientific Model Development*, 8, 1991-2007, doi:10.5194/gmd-8-1991-2015.

Das, R.J. and Pal, S..(2016). Identification of Water Bodies from Multispectral Landsat Imageries of Barind Tract of West Bengal. *International Journal of Innovative Research and Review*, 4 (1), 26-37.

Du, Y., Zhang, Y., Ling, F., Wang, Q., Li, W., and Li, X..(2016). Water Bodies’ Mapping from Sentinel-2 Imagery with Modified Normalized Difference Water Index at 10-m Spatial

1 Resolution Produced by Sharpening the SWIR Band. *Remote Sensing*, 8, 354-372,  
2 doi:10.3390/rs8040354.

3 Feyisa, L.G., Meilby, H., Fensholt, R., and Proud, S.R..(2014). Automated Water Extraction  
4 Index: A New Technique for Surface Water Mapping Using Landsat Imagery. *Remote*  
5 *Sensing of Environment*, 140 (2014), 23–35.

6 Gao, B.C..(1996). NDWI A – Normalized Difference Water Index for Remote Sensing of  
7 Vegetation Liquid Water from Space. *Remote Sensing of Environment*, 58, 257-266.

8 Hong, G., Xing-fa, G., Young, X., Tau, Y., Hai-liang, G., Xiang-qin, W., and Qi-yue, L..(2014).  
9 Evaluation of Four Dark Object Atmospheric Correction Methods Based on XY-3 CCD  
10 Data [Abstract]. *Spectroscopy and Spectral Analysis*, 34 (8), 2203-2207.

11 Islam, Md.A., Thenkabail, P.S., Kulawardhana, R.W., Alankara, R., Gunasinghe, S., Edussriya,  
12 C., and Gunawardana, A..(2008). Semi - automated Methods for Mapping Wetlands  
13 using Landsat ETM+ and SRTM Data. *International Journal of Remote Sensing*, 29  
14 (24), 7077-7106, doi: 10.1080/01431160802235878.

15 Jackson, T.J., Chen, D., Cosh, M., Li, F., Anderson, M., Walthall, C., Doriaswamy, P., and Hunt,  
16 E.R..(2004). Vegetation Water Content Mapping Using Landsat Data Derived  
17 Normalized Difference Water Index for Corn and Soybeans. *Remote Sensing of*  
18 *Environment*, 92, 475-482.

19 Ji, L., Zhang, L., and Wylie, B..(2009). Analysis of Dynamic Thresholds for the Normalized  
20 Difference Water Index, *Photogrammetric Engineering and Remote Sensing*, 75, (11),  
21 1307-1317.

22 Jiang, H., Feng, M., Zhu, Y., Lu, N., Huang, J., and Xiao, T.. (2014). An Automated Method for  
23 Extracting Rivers and Lakes from Landsat Imagery. *Remote Sensing*, 6, 5067-5089.

24 Kwak, Y. and Iwami, Y..(2014). Nationwide Flood Inundation Mapping in Bangladesh by  
25 Using Modified Land Surface Water Index. *ASPRS 2014 Annual Conference*, Louisville,  
26 Kentucky, March 23-28, 2014.

27 Lacaux, J.P., Tourre, Y.M., Vignolles, C., Ndione, J.A., Lafaye, M..(2007). Classification of  
28 Ponds from High-spatial Resolution Remote Sensing: Application to Rift Valley Fever  
29 epidemics in Senegal. *Remote Sensing of Environment*, 106, 66–74.



1 Li, B., Ti, C., Zhao, Y., and Yan, X..(2015). Estimating Soil Moisture with Landsat Data and Its  
2 Application in Extracting the Spatial Distribution of Winter Flooded Paddies. *Remote*  
3 *Sensing*, 8, 38-55, doi:10.3390/rs8010038.

4 Li, W., Du, Z., Ling, F., Zhou, D., Wang, H., Gui, Y., Sun, B., and Zhang, X..(2013). A  
5 Comparison of Land Surface Water Mapping Using the Normalized Difference Water  
6 Index from TM, ETM+ and ALI. *Remote Sensing*, 5, 5530-5549.

7 Matthews, G.V.T..(2013). *The Ramsar Convention on Wetlands: its History and Development*.  
8 Ramsar Convention Bureau, Gland, Switzerland, p. 41.

9 McFeeters, S.K..(1996). The Use of the Normalized Difference Water Index (NDWI) in the  
10 Delineation of Open Water Features. *International Journal of Remote Sensing*, 17 (7),  
11 1425-1432.

12 Otsu, N..(1979). A Threshold Selection Method from Gray-level Histograms. *IEEE*  
13 *Transactions on Systems, Man, and Cybernetics*, 9, 62–69.

14 Rouse, J.W., Haas, R.H., Schell, J.A., Deering, D. W..(1973). Monitoring vegetation systems in  
15 the Great Plains with ERTS. *Third ERTS Symposium, NASA SP-351 I*, 309-317.

16 Schneider, C.A., Rasband, W.S., and Eliceiri, K.W..(2012). NIH Image to ImageJ: 25 Years of  
17 Image Analysis. *Nature Methods*, 9(7), 671-675, PMID 22930834.

18 Schindelin, J., Rueden, C.T., and Hiner, M.C. et al..(2015). The ImageJ Ecosystem: An open  
19 Platform for Biomedical Image Analysis. *Molecular Reproduction and Development*,  
20 PMID 26153368.

21 Shen, L. and Li, C..(2010). Water Body Extraction from Landsat ETM+ Imagery Using  
22 Adaboost Algorithm. In *Proceedings of 18th International Conference on*  
23 *Geoinformatics*, 18–20 June, Beijing, China, 1–4.

24 Stehman, S.V. and Czaplewski, R.L..(1997). Design and Analysis for Thematic Map Accuracy  
25 Assessment: Fundamental Principles. *Remote Sensing of Environment*, 1998 (64), 331-  
26 344.

27 United States Environmental Protection Agency (EPA)..(2004). *Wetlands Overview*, EPA 843-  
28 F-04-011a. Office of Water, December 2004.

- 1 Wilson, E.H. and Sader, S.A..(2002). Detection of Forest Harvest Type using Multiple Dates of  
2 Landsat TM Imagery. *Remote Sensing Environment*, 80, 385–396.
- 3 World Wildlife Fund (WWF).(2004). Global Lakes and Wetlands Database: Lakes and  
4 Wetlands Grid (Level 3). Washington, D.C., [http://www.worldwildlife.org/  
5 publications/global-lakes-and-wetlands-database-lakes-and-wetlands-grid-level-3](http://www.worldwildlife.org/publications/global-lakes-and-wetlands-database-lakes-and-wetlands-grid-level-3).
- 6 Yang, L., Tian, S., Yu, L., Ye, F., Qian, J., and Qian, Y..(2015). Deep Learning for Extracting  
7 Water Body from Landsat Imagery. *International Journal of Innovative Computing,  
8 Information and Control*, 11 (6), 1913–1929.
- 9 Xiao, X., Boles, S., Froking, S., Salas, W., Moore, B., et al..(2002). Observation of Flooding and  
10 Rice Transplanting of Paddy Rice Fields at the Site to Landscape Scales in China using  
11 VEGETATION Sensor Data. *International Journal of Remote Sensing*, 23, 3009–3022,  
12 doi:10.1080/01431160110107734.
- 13 Xie, H., Luo, X., Xu, X., Pan, H., and Tong, X..(2016). Automated Subpixel Surface Water  
14 Mapping from Heterogeneous Urban Environments Using Landsat 8 OLI Imagery.  
15 *Remote Sensing*, 8 (7), 584-599.
- 16 Xu, H..(2006). Modification of Normalized Difference Water Index (NDWI) to Enhance Open  
17 Water Features in Remotely Sensed Imagery. *International Journal of Remote Sensing*,  
18 27 (14), 3025–3033, doi: 10.1080/01431160600589179.
- 19 Zhai, K., Wu, X., Qin, Y., and Du, P..(2015). Comparison of Surface Water Extraction  
20 Performances of Different Classic Water Indices using OLI and TM Imageries in  
21 Different Situations. *Geo-spatial Information Science*, 18 (1), 32-42, doi: 10.1080/  
22 10095020.2015.1017911.
- 23 Zhang, Z., He, G., and Wang, X..(2010). A Practical DOS Model-Based Atmospheric  
24 Correction Algorithm. *International Journal of Remote Sensing*, 31 (11), 2837-2852.