

Pharmacognostic Characteristics and Antioxidant Activity of Gendola Stem (*Basella Rubra* L.) Ethanol Extract from South Kalimantan *by* JPS .

Submission date: 28-Apr-2023 11:05AM (UTC+0900)

Submission ID: 2077781930

File name: 2._PJ-15-2-1065.pdf (1.24M)

Word count: 3425

Character count: 18809

2 Pharmacognostic Characteristics and Antioxidant Activity of Gendola Stem (*Basella Rubra* L.) Ethanol Extract from South Kalimantan

Arnida Arnida*, Dian Kurnia, Sutomo Sutomo

Arnida Arnida*, Dian Kurnia, Su-
tomo Sutomo

5
Pharmacy Study Program, Faculty of
Mathematics and Natural Sciences,
Lambung Mangkurat University Jl. A. Yani
Km 36 Banjarbaru, South Kalimantan 70714,
INDONESIA.

Correspondence

Arnida Arnida

5
Pharmacy Study Program, Faculty of
Mathematics and Natural Sciences,
Lambung Mangkurat University Jl. A.
Yani Km 36 Banjarbaru, South Kalimantan
70714, INDONESIA.

1
E-mail: arnida01@ulm.ac.id

History

- Submission Date: 07-12-2022;
- Review completed: 05-02-2023;
- Accepted Date: 09-02-2023.

DOI : 10.5530/pj.2023.15.

Article Available online

<http://www.phcogj.com/v15/i6>

Copyright

© 2023 Phcogj.Com. This is an open-
access article distributed under the terms
of the Creative Commons Attribution 4.0
International license.

ABSTRACT

13
Background: Gendola (*Basella rubra* L.) is a medicinal plant native to South Kalimantan. Therefore, this research aims to determine the antioxidant activity of *B. rubra* and the specific as well as nonspecific parameters of its ethanolic stem extract through pharmacognostic tests. **Objective:** The specific parameters comprise of the extract composition, phytochemical screening, TLC profile, organoleptic, and microscopic variables. Meanwhile, drying shrinkage and ash content were the non-specific parameters. **Materials and Methods:** The Indonesian Herbal Pharmacopoeia was used as a reference for the pharmacognostic test method. Also, the antioxidant activity was determined through the DPPH method, which was based on the IC_{50} value. **Results:** A tasteless, brownish-purple powder with a characteristic smell, was obtained from the simple organoleptic assay while the epidermis, cortex, endodermis, pith, xylem, phloem, cambium, cell walls, stoma, epidermal, guard, and neighboring cells were observed through microscopic examinations. The *B. rubra* stem contains phenolic compounds, flavonoids, steroids, tannins, and saponins. A good TLC profile was shown by the eluents of n-hexane: ethyl acetate (3:7) and chloroform: methanol (9:1). The *B. rubra* simplicia stem had a water- and ethanol-soluble extract, drying shrinkage, total ash, and acid insoluble ash contents of $16.433\% \pm 0.252$, $10.5\% \pm 0.173$, $8.467\% \pm 0.153$, $6.5\% \pm 0.1$, and $0.517\% \pm 0.115$, respectively. **Conclusion:** Moreover, the pharmacognostic test results were acceptable. The *B. rubra* stem ethanol extract had an antioxidant activity of 344,096 ppm based on the IC_{50} value.

Key words: *Basella rubra* L., Gendola, Stem, Pharmacognostic, Antioxidant.

INTRODUCTION

Indonesia is a country rich in biodiversity, with the majority of plants used as traditional medicines by the community to prevent and treat diseases. *Basella rubra* L. (Gendola) is an example of these medicinal plants and is indigenous to South Kalimantan. The leaves and fruits of this vegetable are the most used parts¹ while the stem has been investigated to have antimicrobial activity. Furthermore, the ethanol extract of this stem is known to contain carbohydrates, tannins, terpenes, steroids, and saponins. These contents are responsible for inhibiting the activity of microorganisms, such as *Staphylococcus aureus*, *Escherichia coli*, *Candida albicans*, and *Trichophyton rubrum*.² The ethanolic and methanolic extracts of the leaves and fruit were found to have a significant antioxidant activity with Inhibitory Concentration 50 (IC_{50}) values of 84.70 ppm for the leaf and 35.20 ppm for the fruit.^{3,4}

Pharmacognostic tests were conducted to determine the identity and characteristics of the medicinal plant ingredients through a series of parameters that ensure quality, safety, and prevent counterfeiting.⁵ Meanwhile, the antioxidant activity assay on natural ingredients was performed to discover new sources of natural antioxidants. The DPPH (1,1-diphenyl-2-picrylhydrazyl) method is a common type of this test, which was chosen because it is easy, fast, simple, sensitive, and requires a small sample.⁶ Also, this parameter was measured based on the IC_{50} value.

According to the previous description, this is noteworthy research on the pharmacognostic tests and antioxidant activity of the ethanol extract of South Kalimantan *B. rubra* stems. The pharmacognostic tests were conducted to determine the stem's characteristics, while the antioxidant activity assays were performed to discover natural sources of antioxidants. This research is expected to add to the information regarding the *B. rubra* plant and serve as data for further investigation.

MATERIAL AND METHODS

The materials used included ethanol extract *B. rubra* rod, 1,1-diphenyl-2-picrylhydrazyl (DPPH), ammonia (NH_3), aqua dest (H_2O), dilute hydrochloric acid (HCl), iron (III) chloride ($FeCl_3$), and 96% technical ethanol (C_2H_5OH). Ethyl acetate pa, 1% gelatin, filter paper, chloroform (CH_2Cl), quercetin, silica gel plate GF₂₅₄, methanol pa (CH_3OH), n-hexane pa, Dragendorff reagent, Liebermann-Burchard reagent, and Mayer reagent were also utilized. Tools, such as furnace (Ney-Vulcan D-550) for farmakognostic assay, UV-Vis spectrophotometer (Spectronic Genesys 10 uv) for antioxidant activity Assay,

Simplicia processing and preparation of *B. rubra* ethanol stem extract

The wet *B. rubra* stems were obtained from the yard of a Guntung Manggis Village house, South Kalimantan Province, and then sorted, washed, and chopped. Subsequently, these stems were dried using

Cite this article: Arnida A, Kurnia D, Sutomo S. Pharmacognostic Characteristics and Antioxidant Activity of Gendola Stem (*Basella Rubra* L.) Ethanol Extract from South Kalimantan. Pharmacogn J. 2023;15(2):.

a drying cabinet at a temperature of 55°C and then sorted, as well as washed with the aid of a blender. A total of 167.90 grams of simplicia powder was extracted through the maceration method using 96% ethanol. This process was conducted for 7x24 hours (re-maceration) by changing the solvent hourly and stirring every 8 hours. The liquid extract of the stems was thickened with a water bath at a temperature of 50°C until a constant weight was obtained.⁷

Pharmacognostic test of *B. rubra* stem

Furthermore, the Pharmacognostic tests consisted of specific and non-specific parameters. The specific parameter tests conducted in this research comprised of the organoleptic testing of Simplicia, microscopic cross-sectional, longitudinal, and paradermal stems analysis, phytochemical screening of the plant and its extracts, extract TLC profile, water-soluble, and ethanol-soluble extract contents. Meanwhile, the non-specific parameters included the determination of drying shrinkage, total ash composition, and acid insoluble ash content of Simplicia.

Qualitative antioxidant activity test

The thin-layer chromatography (TLC) plates were sprayed with the DPPH specific reagent after being washed with the appropriate eluent. Subsequently, the formation of yellow TLC spots on a purple background indicates a positive antioxidant result.⁸

Quantitative antioxidant activity test

Determination of the maximum DPPH wavelength: Determination was carried out 0.5 mL of 0.4 mM DPPH solution was reacted with 2 mL of methanol p.a. and then allowed to stand for 30 minutes in a dark environment. Subsequently, the solution's absorbance was read at a wavelength of 450-550 nm.⁹

Operational timing: Determination is carried out 0.5 mL of 0.4 mM DPPH solution was reacted with 2 mL of 6 ppm quercetin. The absorbance of the mixture was then read at the maximum DPPH wavelength at an interval of 2 minutes for an hour.⁸

Determination of the IC₅₀ value of quercetin comparison solution: Quercetin mother liquor was formulated with a concentration of 100 ppm and then diluted into a series solution of 2, 3, 4, 5, and 6 ppm. Subsequently, 2 mL per concentration series solution was collected and reacted with 0.5 mL of 0.4 mM DPPH solution. The solution was then placed in a dark environment for an operational time before the absorbance was measured at the maximum DPPH wavelength.¹⁰

Determination of IC₅₀ value of *B. rubra* stem ethanol extract: The extract solution was formulated with a concentration of 50 ppm and then diluted to 40, 80, 120, and 160 ppm. Consequently, 2 mL of each extract solution was reacted with 0.5 mL of 0.4 mM DPPH. The solution was then left for an operational time in a dark environment and the absorbance read at the maximum DPPH wavelength.¹⁰

RESULTS

Plant determination

Furthermore, the Center for Plant Conservation of the Botanical Gardens – LIPI conducted the plant determination analysis, which revealed gendola as part of the Basellaceae family with the species name *Basella rubra* L (Figure 1), specimen number B-3550/IPH.3/KS/X/2018.

Simplicia processing and ethanol extract *B. rubra* stem making

The *B. rubra* stems were collected from the house yard, which is a home cultivation media of the *B. rubra* plant with medicinal properties. Also, 254.98 grams of the Simplicia stem powder was obtained while a total

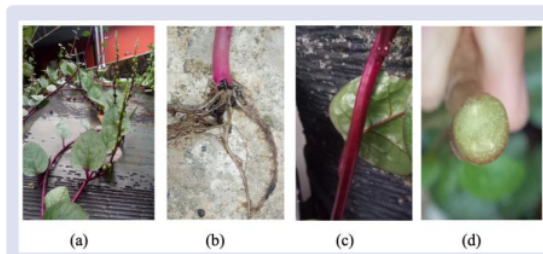


Figure 1: *Basella rubra* plant; (a) whole parts; (b) root; (c) stems; (d) stem slices (Personal documentation, 2019).

of 167.90g was extracted by the maceration method using 96% ethanol. This process was chosen because it is a safe method to test samples that have not been exposed to heat. Moreover, 96% ethanol was used to attract secondary metabolites that are polar, semi, or non-polar. A dark green-black ethanolic extract of the *B. rubra* stems was obtained with a weight and percent yield of 28.1 grams and 16.736%, respectively.

Pharmacognostic test of *B. rubra* stems

According to the organoleptic examination, the *B. rubra* stem Simplicia powder is tasteless, brownish-purple, with a characteristic odor. This sample was originally reddish-purple, however, the color changed due to the drying process. Also, the distinctive odor produced may be influenced by the presence of volatile oil compounds.¹¹

The *B. rubra* stems were observed in cross, longitudinal, and paradermal sections (Figure 2). Consequently, the epidermis, cortex, endodermis, pith, xylem, phloem, and cambium were visible in cross-section, while the longitudinal section only showed the epidermis, cortex, endodermis, and pith. The paradermal cross-section illustrated the presence of cell walls, stoma, guard, epidermal, and neighboring cells. Moreover, the epidermal cells are polygonal in shape with parasitic stomata.

Phytochemical screening was conducted on simplicia powder samples and *B. rubra* stems ethanol extract. These samples were tested for color using the appropriate reagents to determine the class of compounds. Table 1 shows that both variables were positive for phenolic compounds, flavonoids, steroids, saponins, and tannins.

The eluents of *n*-hexane: ethyl acetate (3:7) and chloroform: methanol (9:1) display the thin-layer chromatography (TLC) profile of the *B. rubra* stems ethanolic extract, which produced good separation. However, Table 2 illustrates the separation for the chloroform eluent: methanol (5:5) was inadequate. The ability of the compound components in the sample to separate was influenced by the polarity of the eluent. Furthermore, fluorescent spots were only visible on a 254 nm and not on a 366 nm UV lamp.

Extract content testing was performed to provide an initial description of the number of compounds that can be extracted with certain solvents.¹² According to the testing levels of *B. rubra* simplicia stem extract, the compounds in this plant are more concentrated in water solvents, which are more polar than in less polar ethanol.

The drying shrinkage was measured to obtain an overview of the compounds lost due to the 105 °C drying process. This value was influenced by the simplicia drying process, which aimed to remove water from fresh samples. Consequently, a value greater than 10% indicates that the water content in simplicia is higher (Tabel 3). Therefore, this condition can result in a microbe-dense plant and trigger enzymatic processes that convert chemical compounds into pharmacologically inactive products.^{13,14}

Furthermore, the purpose of testing the simplicia ash content was to obtain an overview of its internal and external mineral composition.¹⁵ This

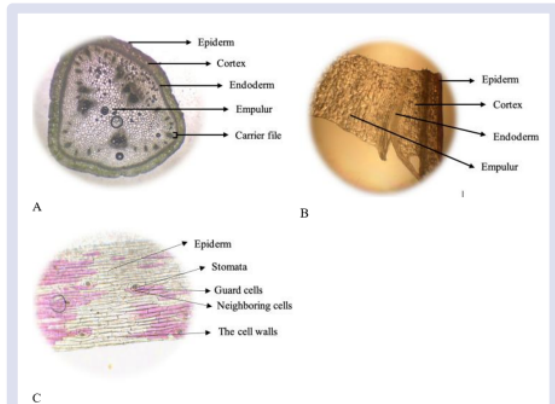


Figure 2: Microscopic results of *B. rubra* L. stem; (A) Transverse cross-section; (B) Longitudinal cross-section; (C) Paradermal cross section (4x10 magnification).

Table 1: Results of phytochemical screening of *B. rubra* stems.

Number	Phytochemical Compounds	Test Results	
		Simplicia Powder	Ethanol Extract
1	Phenolic	+	+
2	Flavonoids	+	+
3	Steroids	+	+
4	Saponins	+	+
5	Alkaloids	-	-
	a. Mayer's reagent	-	-
	b. Dragendorff's reagent	-	-
6	Tannins	+	+

Note: + is available, and - is not available

Table 2: Rf value of *B. rubra* stems ethanol extract.

Number	R _f Value on eluent			Information
	n-hexane: ethyl acetate (3:7)	chloroform: methanol (5:5)	chloroform: methanol (9:1)	
1	0,98	0,8	0,96	stationary phase: Silica gel GF ₂₅₄ spot viewer: UV 254 nm
2	0,9		0,88	
3	0,6		0,68	
4	0,54		0,52	
5	0,3		0,46	
6			0,34	

value is influenced by plant cultivation and simplicia drying factors.^{16,17} The acid-insoluble ash content shows the cleanliness level of simplicia processing, which is indicated by the presence of insoluble mineral or metal contamination, such as soil, sand, dirt, metal elements Ag, Pb, and Hb.^{18,19}

Qualitative antioxidant activity test

The antioxidant activity was assessed qualitatively as a basis for conducting the quantitative tests. Also, yellow TLC spots were produced on the stem ethanol extract of *B. rubra* after spraying with DPPH on a purple background. This indicates the presence of antioxidant activity in the sample.²⁰

Quantitative antioxidant activity test

Determination of the DPPH maximum wavelength was conducted to establish the wavelength with the highest sensitivity. Consequently,

a value of 516 nm was obtained from the analysis. However, the operational period was ascertained to acquire the optimal stability time of the test compound during a reaction. This was indicated by a stable absorbance with an operational time between the 24th and 52nd minute.

Quercetin is a flavonoid compound with strong antioxidant activity, which was used as a positive control or comparison. The results of the linear regression equation between the quercetin concentration and the inhibition percentage were $y = 14.4903x + 2.99$ with a correlation coefficient (r) of 0.999, hence, the IC₅₀ value of linear regression is 3.244 ppm. However, Table 4 shows the IC₅₀ probit SPSS quercetin value is 4.189 ppm. According to the results, this compound has very strong antioxidant activity because its value was below 50 ppm.²¹

DISCUSSION / CONCLUSION

The antioxidant activity of the ethanolic stem extract of *B. rubra* was determined quantitatively using the IC₅₀ value. The results of the linear regression equation between the extract concentration and the inhibition percentage were $y = 0.14042x - 1.682$ with a correlation coefficient (r) of 0.989, hence, the linear regression IC50 value is 344.096 ppm. However, Table 5 shows that the IC₅₀ value of the probit SPSS stem ethanol extract of *B. rubra* is 406.909 ppm. The difference in the resulting IC₅₀ values was influenced by the lack of sample data available for analysis. Based on the value obtained, the ethanolic extract of *B. rubra* stems has antioxidant activity with a value above 200 ppm.²¹ The absorbance response data and percent inhibition used to determine the IC₅₀ value of the ethanolic stem extract of *B. rubra* are yet to be in the positive control response range.

The pharmacognostic tests results of *B. rubra* stem specific parameters, which include organoleptic and microscopic tests, determination of extract levels, phytochemical screening, and TLC profiles met the requirements of the Indonesian Herbal Pharmacopoeia and Materia

Table 3: Results of pharmacognostic tests of *B. rubra* stem simplicia powder.

Number	Assaying	Results	Requirements (MMI & FHI)
1	Water soluble essence	16,433% ± 0,252	≥16%
2	Ethanol soluble extract content	10,5% ± 0,173	≥8%
3	Drying shrink	8,467% ± 0,153	<10%
4	Total ash content	6,5% ± 0,1	<16,6%
5	Acid insoluble ash content	0,517% ± 0,115	<2%

Table 4: IC50 value of quercetin comparison solution.

Concentration (ppm)	% Inhibition	IC ₅₀ Linear Regression	IC ₅₀ Probit
2	32,219%		
3	45,287%		
4	61,697%	3,244 ppm	4,189 ppm
5	76,478%		
6	89,075%		

Table 5: IC50 Value of ethanol extract of *B. rubra* stem.

Concentration (ppm)	% Inhibition	IC ₅₀ Linear Regression	IC ₅₀ Probit
40	4,393%		
80	9,626%		
120	13,645%	344,096 ppm	406,909 ppm
160	21,776%		

Medika Indonesia. Also, the non-specific parameters, including determination of drying shrinkage and ash content were acceptable. The ethanolic extract of *B. rubra* stem was also recognized to exhibit a relatively poor antioxidant activity with a linear regression IC50 value of 344.096 ppm.

ACKNOWLEDGMENT

10
The author would like to thank the Dean of the Faculty of Mathematics and Natural Sciences and the Chancellor of Lambung Mangkurat University for the support of PNPB funds and laboratory facilities. Thanks to Wananda, Rina, and Annisa for their cooperation in the laboratory. Thanks to Wananda, Rina, and Annisa for their cooperation in the laboratory.

AUTHOR CONTRIBUTIONS

Concept – A.A., D.K., S.S.; Design – 7 A.A., D.K.; Supervision – S.S.; Resources – S.S.; Materials: A.A., D.K., S.S.; Data Collection and/or Processing – A.A., D.K., S.S.; Analysis and/or Interpretation – A.A., D.K., S.S.; Literature Search – A.A., D.K., S.S.; Writing – A.A., D.K., S.S.; Critical Reviewers – A.A., S.S.

CONFLICTS OF INTEREST STATEMENT

1
The authors declared no conflicts of interest in the manuscript.

REFERENCES

1. Dewo M. Gendola: Medicine of the God of Conqueror of Diseases. FMedia. 2013.
2. Deka J, Borah U, Dash B, Dash S, Kalita L. Preliminary Phytochemical Screening and in Vitro Anti-Microbial Activity of Ethanolic Extract of Stems of the Plant *Tagetes Erecta* L. (Family-Asteraceae). *Int J Curr Pharm Res.* 2018;10(4):64.
3. Lukiati B. Determinate of Antioxidant Activity and The Total Phenols Content of Gendola (*Basella* Candidate Biologi, Sains, Lingkungan, dan Pembelajarannya. Seminar Nasional XI Pendidikan Biologi FKIP UNS 27853. 2012:195-200.
4. Abdul DA, Majeed SN, Ameen BH. Antioxidant activity, total phenolic content and antimicrobial activity of two medicinal plants from Sulaimani City, Iraqi Kurdistan Region. 2014;18:65-71.
5. Chanda S. Importance of pharmacognostic study of medicinal plants: An overview. *J Pharmacogn Phytochem.* 2014;2(1):67-73.
6. Hanani E, Munim A, Sekarini R. Identification of Antioxidant Compounds in *Callyspongia* Sp Sponges from the Seribu Island. *Majalah Ilmu Kefarmasian.* 2005;2(3):127-33.
7. Ministry of Health RI. Parameter Standar Umum Ekstrak Tumbuhan Obat. (Departemen Kesehatan Republik Indonesia, 2000).
8. Sutomo S, Wahyuono S, Rianto S, Yuswanto A. Antioxidant activity assay of extracts and active fractions of kasturi fruit (*Mangifera casturi* Kosterm.) using 1, 1-diphenyl-2-picrylhydrazyl method. *J Nat Prod* 2014;7(1):124-30.
9. Sutomo S. Antioxidant and immunomodulatory activity of isolate compounds of kasturi fruit (*Mangifera casturi* Kosterm.) from South Borneo Indonesia. 2020.
10. Mardiah N. Determination of Antioxidant Activity of Shallot (*Allium ascalonicum* L.) Peel Extract Using the DPPH Method. *J Pharmasci.* 2017;4:147-54.
11. Kameoka H, Kubo K, Miyazawa M. Volatile flavor components of malabar-nightshade (*Basella rubra* L.). *J Food Composition Anal.* 1991;4(4):315-21.
12. Depkes RI. Formularies. *Farmakope Herbal Indonesia Edisi II.* 2017:213-8.
13. Sutomo S, Kamali DN, Arnida A, Normaidah N, Sriyono A. Pharmacognostic Study and Antioxidant Activity of Mundar (*Garcinia forbesii* King.) leaves from Banua Botanical Gardens of South Kalimantan. *Borneo J Pharm.* 2020;3(4):209-15.
14. Martunis M. Effect of Drying Temperature and Time to Quantity and Quality of Potato Starch Variety of Granola. Pengaruh Suhu dan Lama Pengeringan terhadap Kuantitas dan Kualitas Pati Kentang Varietas Granola. 2012;4(1):26-30.
15. Depkes RI. General Standard Parameters of Medicinal Plant Extract. (Depkes RI, 2000).
16. Depkes RI. *Materia Medica Indonesia.* (Depkes RI, 1978).
17. Wahyuni R, Guswandi, Rivai H. Effect of oven drying, wind drying and direct sunlight on the quality of the herbal simplicia sambiloto. *J Farmasi Higea.* 2014;6:126-33.
18. Sutomo S, Lestari HD, Arnida A, Sriyono A. Simplicia and Extracts Standardization from Jualing Leaves (*Micromelum minutum* Wight & Arn.) from South Kalimantan. *Borneo J Pharm.* 2019;2(2):55-62.
19. BSN. Determination of heavy metal levels of lead (Pb) and cadmium (Cd) in fishery products. *Badan Standardisasi Nasional* 6. 2011.
20. Yamin Y. Determination of Antiradical Activity, Total Phenolic, and Total Flavonoid Contents of Extracts and Fractions of Langsat (*Lansium domesticum* Coor.) Seeds. *Borneo J Pharm.* 2020;3(4):249-56.
21. Molyneux P. The Use of the Stable Free Radical Diphenylpicrylhydrazyl (DPPH) for Estimating Antioxidant Activity. *Songklanakarinn J Sci Technol.* 2004;26(2):211-9.

Cite this article: Arnida A, Kurnia D, Sutomo S. Pharmacognostic Characteristics and Antioxidant Activity of Gendola Stem (*Basella Rubra* L.) Ethanol Extract from South Kalimantan. *Pharmacogn J.* 2023;15(2):.

Pharmacognostic Characteristics and Antioxidant Activity of Gendola Stem (*Basella Rubra* L.) Ethanol Extract from South Kalimantan

ORIGINALITY REPORT

16%

SIMILARITY INDEX

14%

INTERNET SOURCES

12%

PUBLICATIONS

4%

STUDENT PAPERS

PRIMARY SOURCES

- | | | |
|---|--|----|
| 1 | mail.phcogj.com
Internet Source | 3% |
| 2 | www.phcogj.com
Internet Source | 3% |
| 3 | Sutomo Sutomo, Arnida Arnida, Fachrida Yulistati, Normaidah Normaidah, Mohammad Rizki Fadhil Pratama. "PHARMACOGNOSTIC STUDY AND ANTIOXIDANT ACTIVITY OF SUNGKAI (<i>PERONEMA CANESCENS</i> JACK.) METHANOL EXTRACT FROM INDONESIA", <i>Bulletin of Pharmaceutical Sciences</i> . Assiut, 2022
Publication | 2% |
| 4 | Sutomo Sutomo, Dina Noor Kamali, Arnida Arnida, Normaidah Normaidah, Agung Sriyono. "Pharmacognostic Study and Antioxidant Activity of Mundar (<i>Garcinia forbesii</i> King.) leaves from Banua Botanical | 1% |

Gardens of South Kalimantan", Borneo

Journal of Pharmacy, 2020

Publication

5	ejournal2.undip.ac.id Internet Source	1 %
6	journal.umpalangkaraya.ac.id Internet Source	1 %
7	Alev Yıldırım Keskin, Sibel Şentürk. "Being A Hemodialysis Nurse During the COVID-19 Pandemic: A Phenomenological Approach", OMEGA - Journal of Death and Dying, 2022 Publication	1 %
8	www.ncbi.nlm.nih.gov Internet Source	1 %
9	Ruslin, Yamin, Nur Arifka Rahma, Irnawati, Abdul Rohman. "UPLC MS/MS Profile and Antioxidant Activities from Nonpolar Fraction of Patiwala (Lantana camara) Leaves Extract", Separations, 2022 Publication	1 %
10	Riaman, Sukono, Sudradjat Supian, Noriszura Ismail. "Mathematical Modeling for Estimating the Risk of Rice Farmers' Losses Due to Weather Changes", Computation, 2022 Publication	1 %
11	publikasi.lldikti10.id Internet Source	1 %

12

worldwidescience.org

Internet Source

1 %

13

dspace.hangtuah.ac.id:8080

Internet Source

1 %

Exclude quotes On

Exclude matches < 1%

Exclude bibliography On