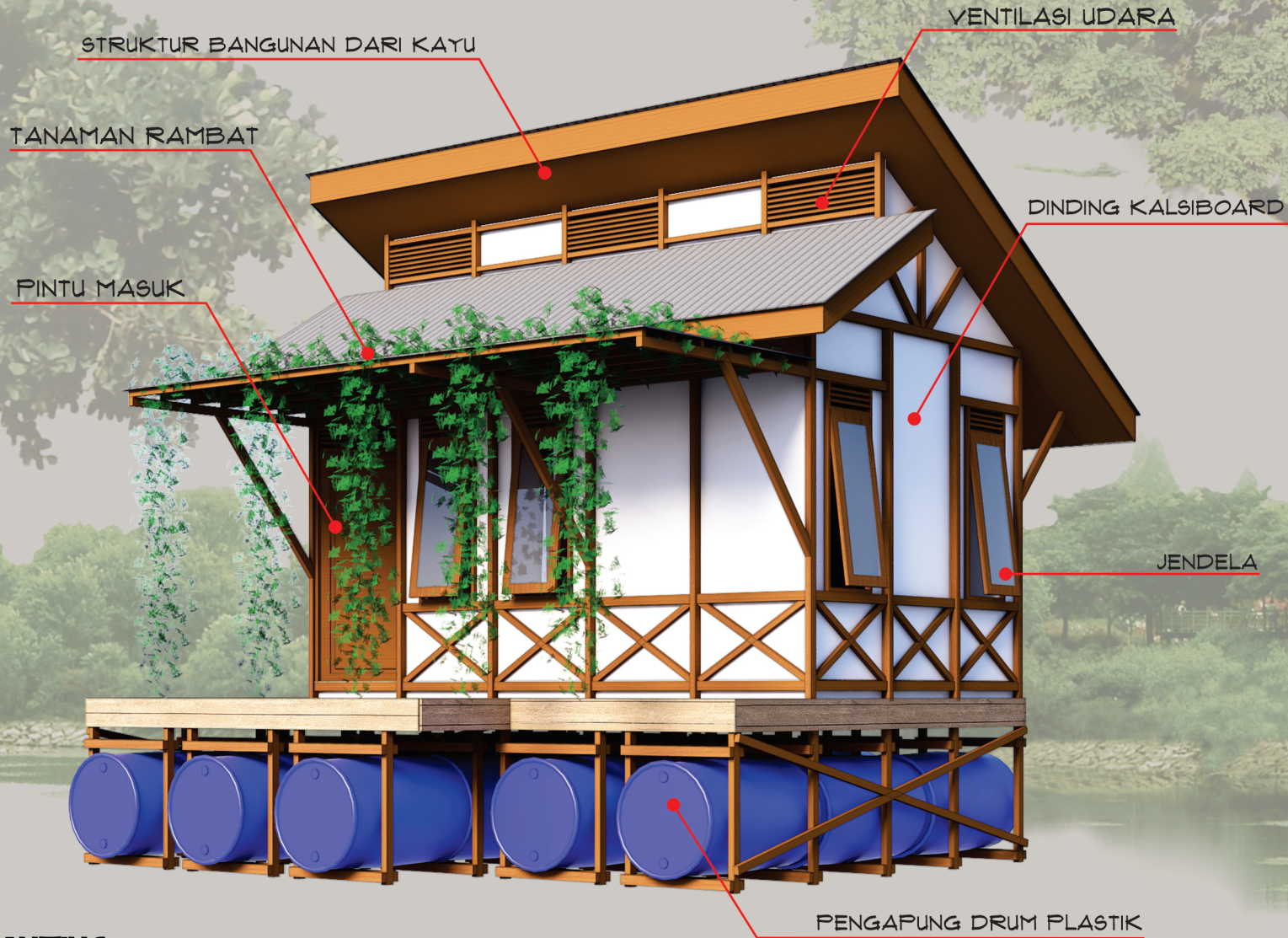


RUMAH LANTING VERNAKULAR

(VERNACULAR FLOATING HOUSE)

Bekantan Research Station (Wetland Ecosystem)

CURIAK ISLAND-BARITO KUALA-SOUTH KALIMANTAN



PERSPEKTIF RUMAH LANTING



FAKULTAS TEKNIK
UNIVERSITAS LAMBUNG MANGKURAT

arsitektur
universitas lambung mangkurat

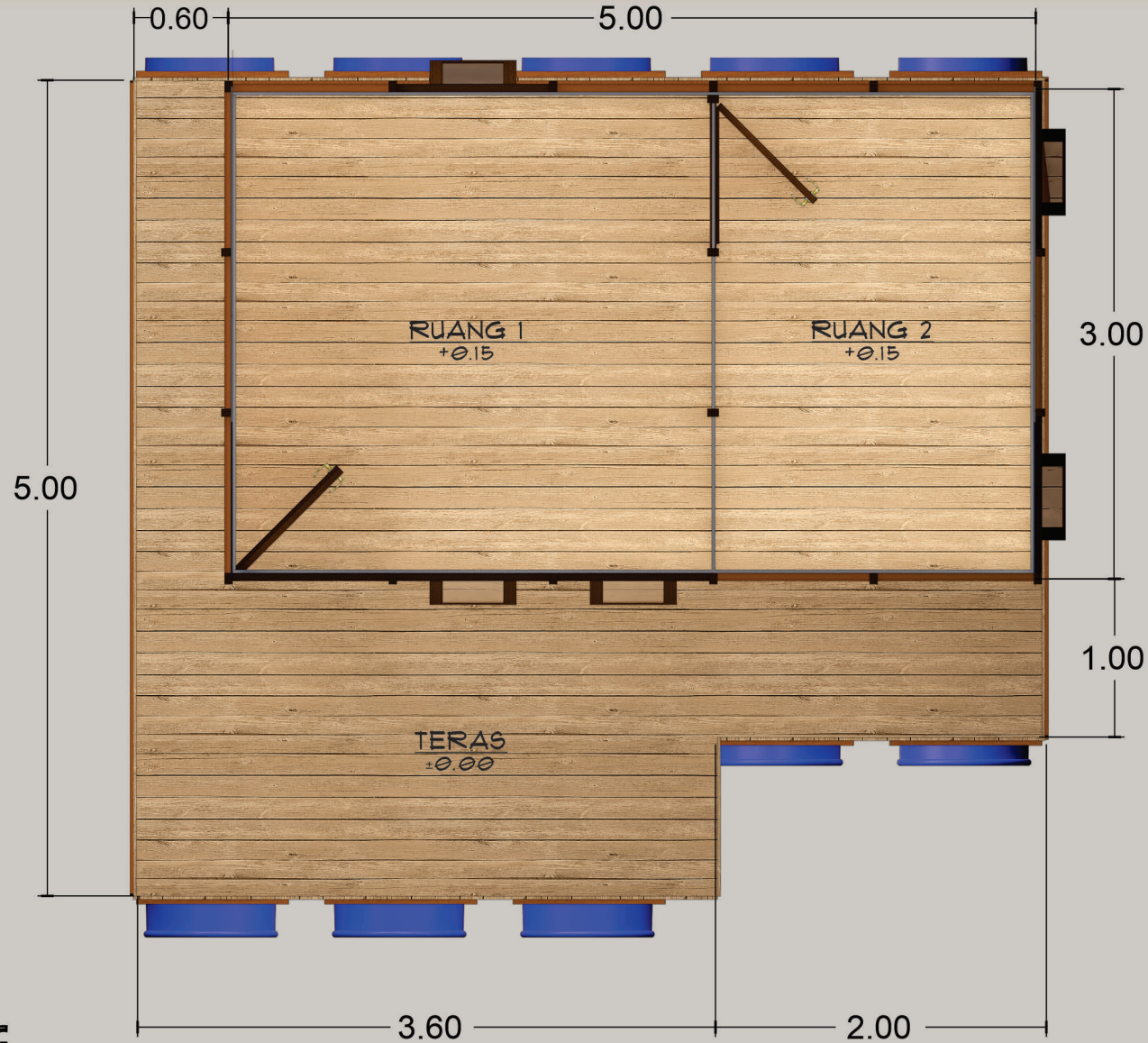


RUMAH LANTING VERNAKULAR

(VERNACULAR FLOATING HOUSE)

Bekantan Research Station (Wetland Ecosystem)

CURIAK ISLAND-BARITO KUALA-SOUTH KALIMANTAN



DENAH RUMAH LANTING



FAKULTAS TEKNIK
UNIVERSITAS LAMBUNG MANGKURAT

arsitektur
universitas lambung mangkurat



LABORATORIUM
ARSITEKTUR VERNAKULAR
LAHAN BASAH KALIMANTAN

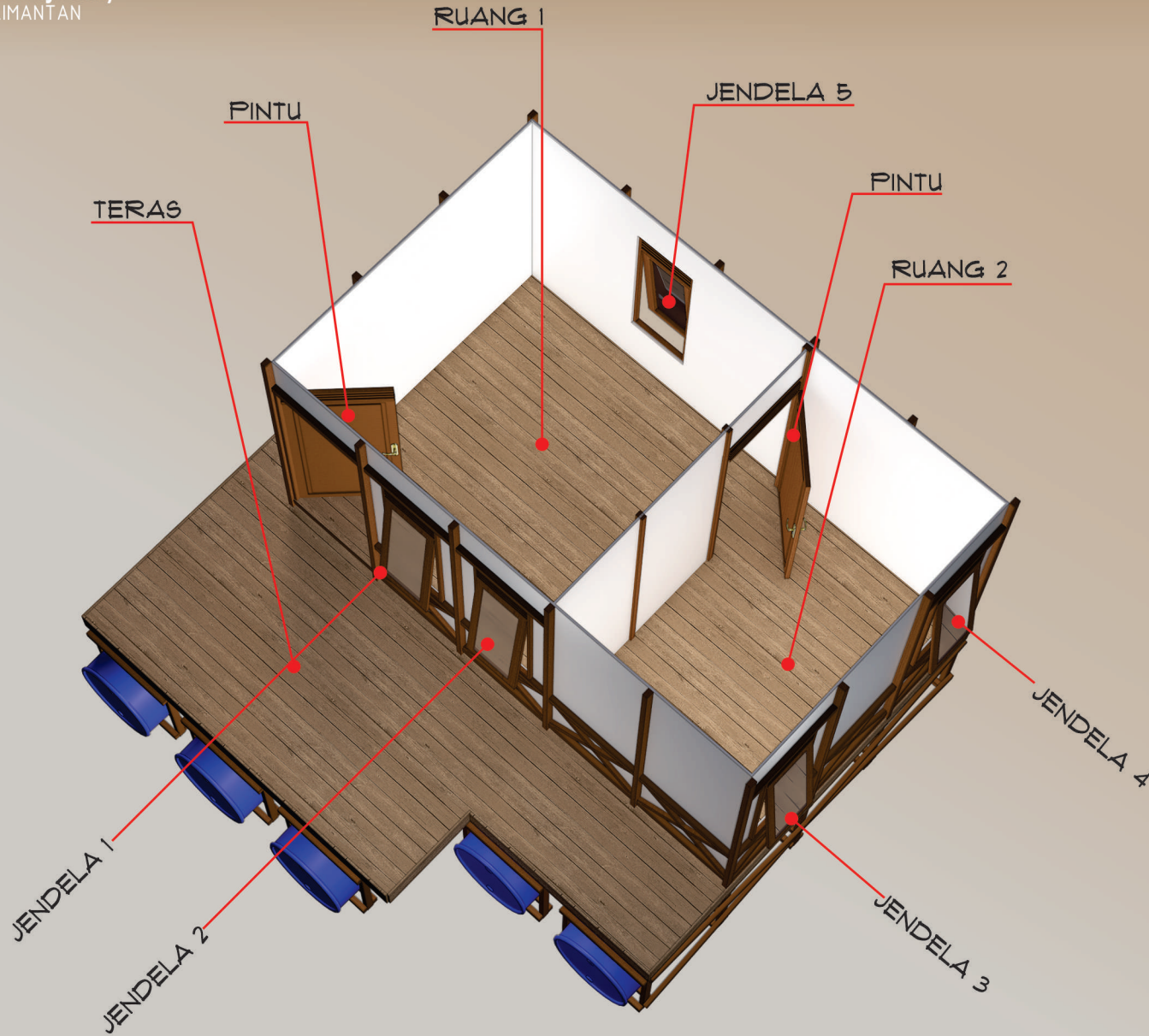


RUMAH LANTING VERNAKULAR

(VERNACULAR FLOATING HOUSE)

Bekantan Research Station (Wetland Ecosystem)

CURIAK ISLAND-BARITO KUALA-SOUTH KALIMANTAN

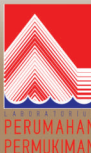


DENAH RUMAH LANTING



FAKULTAS TEKNIK
UNIVERSITAS LAMBUNG MANGKURAT

arsitektur
universitas lambung mangkurat

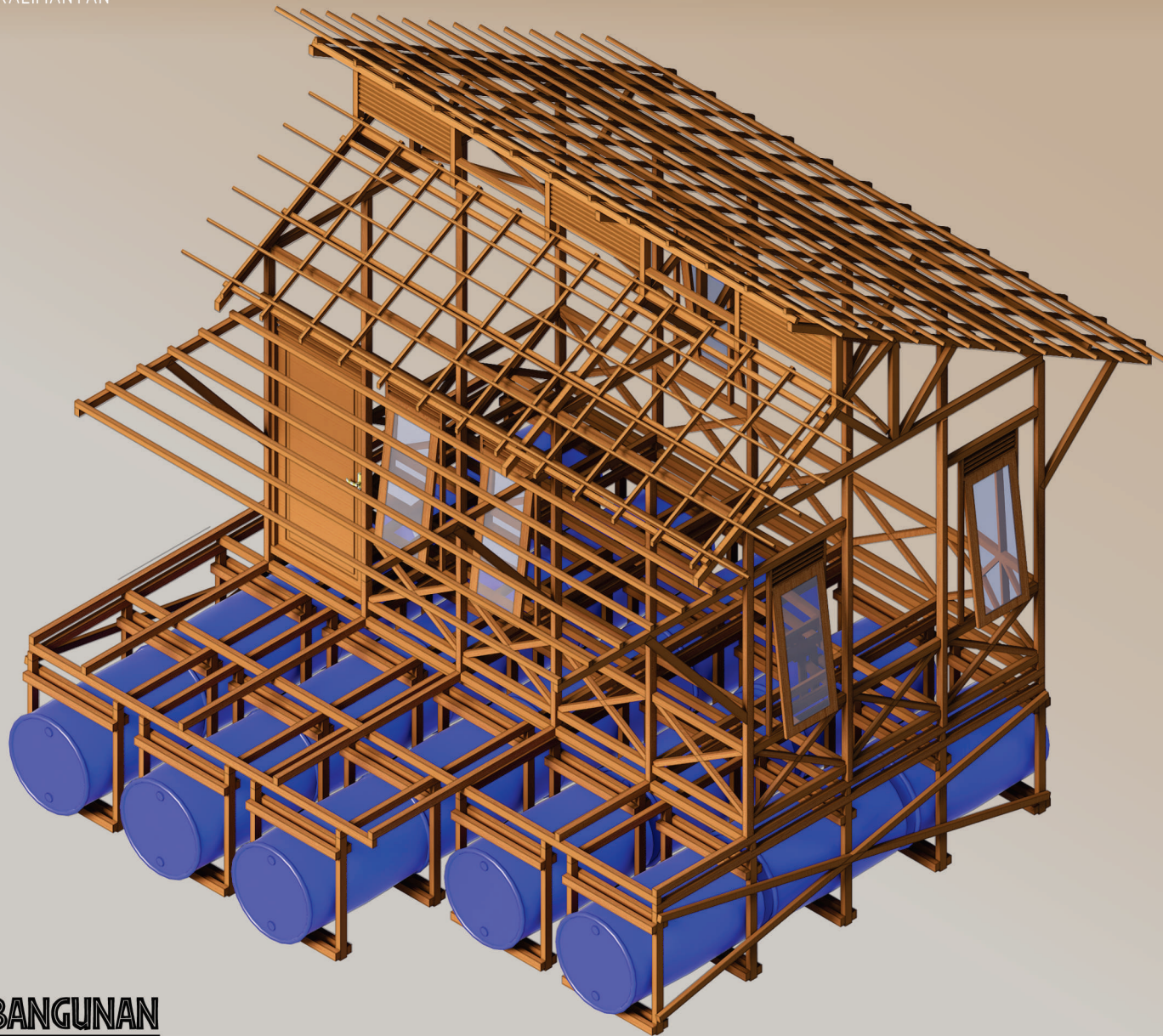


RUMAH LANTING VERNAKULAR

(VERNACULAR FLOATING HOUSE)

Bekantan Research Station (Wetland Ecosystem)

CURIAK ISLAND-BARITO KUALA-SOUTH KALIMANTAN



ISOMETRIK STRUKTUR BANGUNAN



FAKULTAS TEKNIK
UNIVERSITAS LAMBUNG MANGKURAT

arsitektur
universitas lambung mangkurat

STUDIO
DIGITAL
ARSITEKTUR

LABORATORIUM
ARSITEKTUR VERNAKULAR
LAHAN BASAH KALIMANTAN

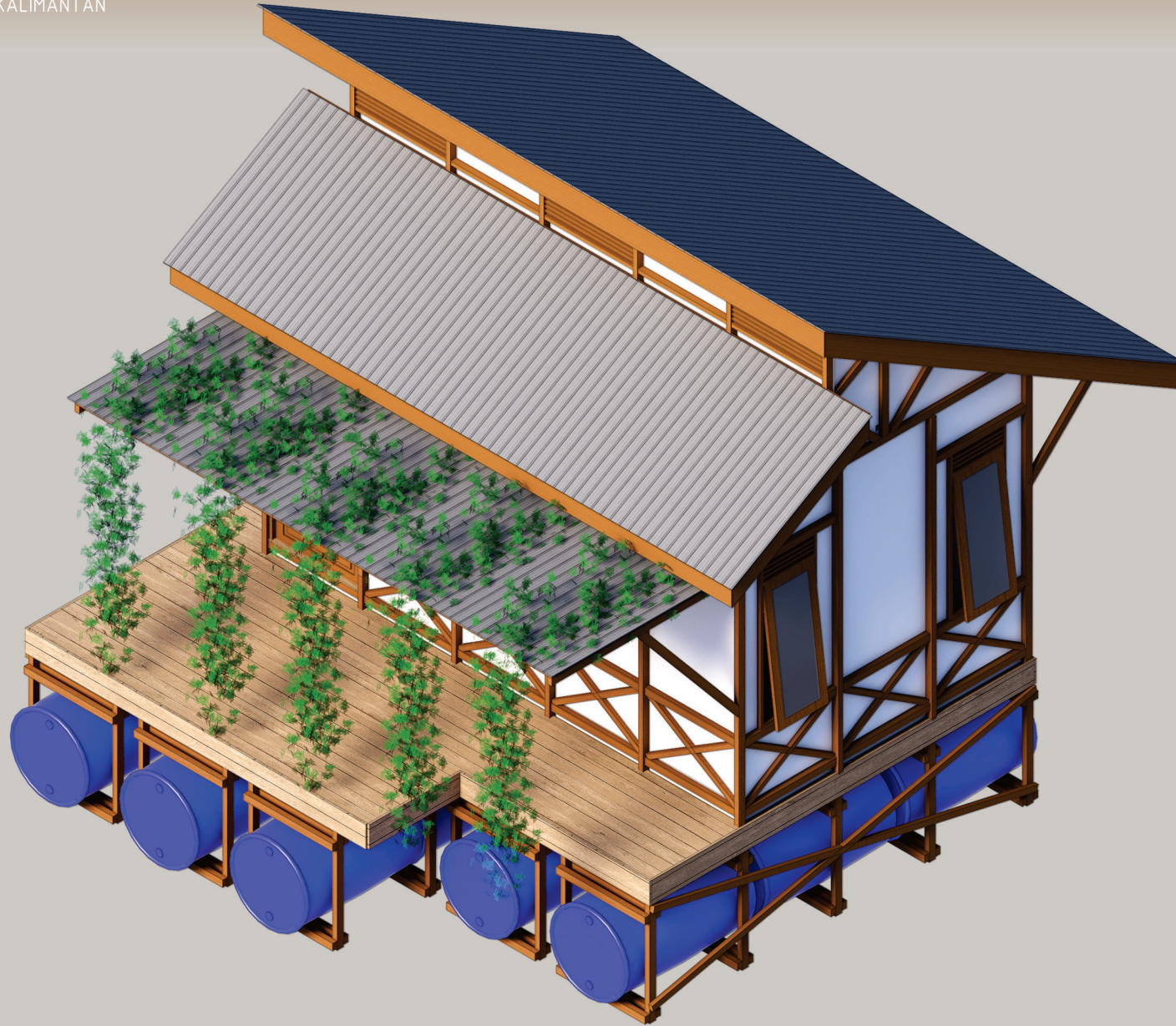


RUMAH LANTING VERNAKULAR

(VERNACULAR FLOATING HOUSE)

Bekantan Research Station (Wetland Ecosystem)

CURIAK ISLAND-BARITO KUALA-SOUTH KALIMANTAN



ISOMETRIK BANGUNAN



FAKULTAS TEKNIK
UNIVERSITAS LAMBUNG MANGKURAT

arsitektur
universitas lambung mangkurat

STUDIO
DIGITAL
ARSITEKTUR

LABORATORIUM
ARSITEKTUR VERNAKULAR
LAHAN BASAH KALIMANTAN



RUMAH LANTING VERNAKULAR

(VERNACULAR FLOATING HOUSE)

Bekantan Research Station (Wetland Ecosystem)

CURIAK ISLAND-BARITO KUALA-SOUTH KALIMANTAN



TAMPAK DEPAN



FAKULTAS TEKNIK
UNIVERSITAS LAMBUNG MANGKURAT

arsitektur
universitas lambung mangkurat

STUDIO
DIGITAL
ARSITEKTUR

LABORATORIUM
ARSITEKTUR VERNAKULAR
LAHAN BASAH KALIMANTAN



RUMAH LANTING VERNAKULAR

(VERNACULAR FLOATING HOUSE)

Bekantan Research Station (Wetland Ecosystem)

CURIAK ISLAND-BARITO KUALA-SOUTH KALIMANTAN



TAMPAK BELAKANG



FAKULTAS TEKNIK
UNIVERSITAS LAMBUNG MANGKURAT

arsitektur
universitas lambung mangkurat

STUDIO
DIGITAL
ARSITEKTUR

LABORATORIUM
ARSITEKTUR VERNAKULAR
LAHAN BASAH KALIMANTAN

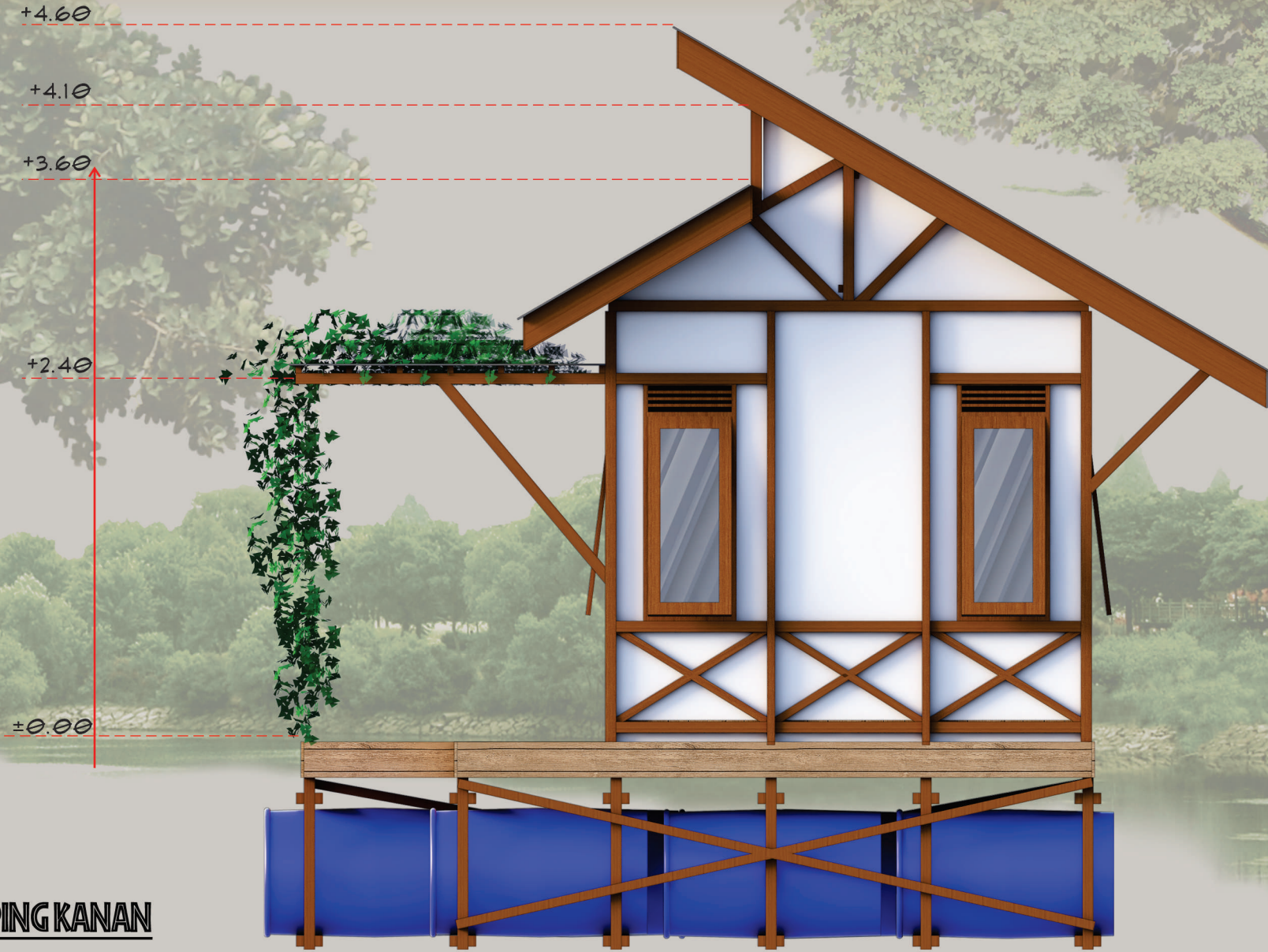


RUMAH LANTING VERNAKULAR

(VERNACULAR FLOATING HOUSE)

Bekantan Research Station (Wetland Ecosystem)

CURIAK ISLAND-BARITO KUALA-SOUTH KALIMANTAN



TAMPAK SAMPING KANAN



FAKULTAS TEKNIK
UNIVERSITAS LAMBUNG MANGKURAT

arsitektur
universitas lambung mangkurat

STUDIO
DIGITAL
ARSITEKTUR

LABORATORIUM
ARSITEKTUR VERNAKULAR
LAHAN BASAH KALIMANTAN

PERUMAHAN
PERMUKIMAN

RUMAH LANTING VERNAKULAR

(VERNACULAR FLOATING HOUSE)

Bekantan Research Station (Wetland Ecosystem)

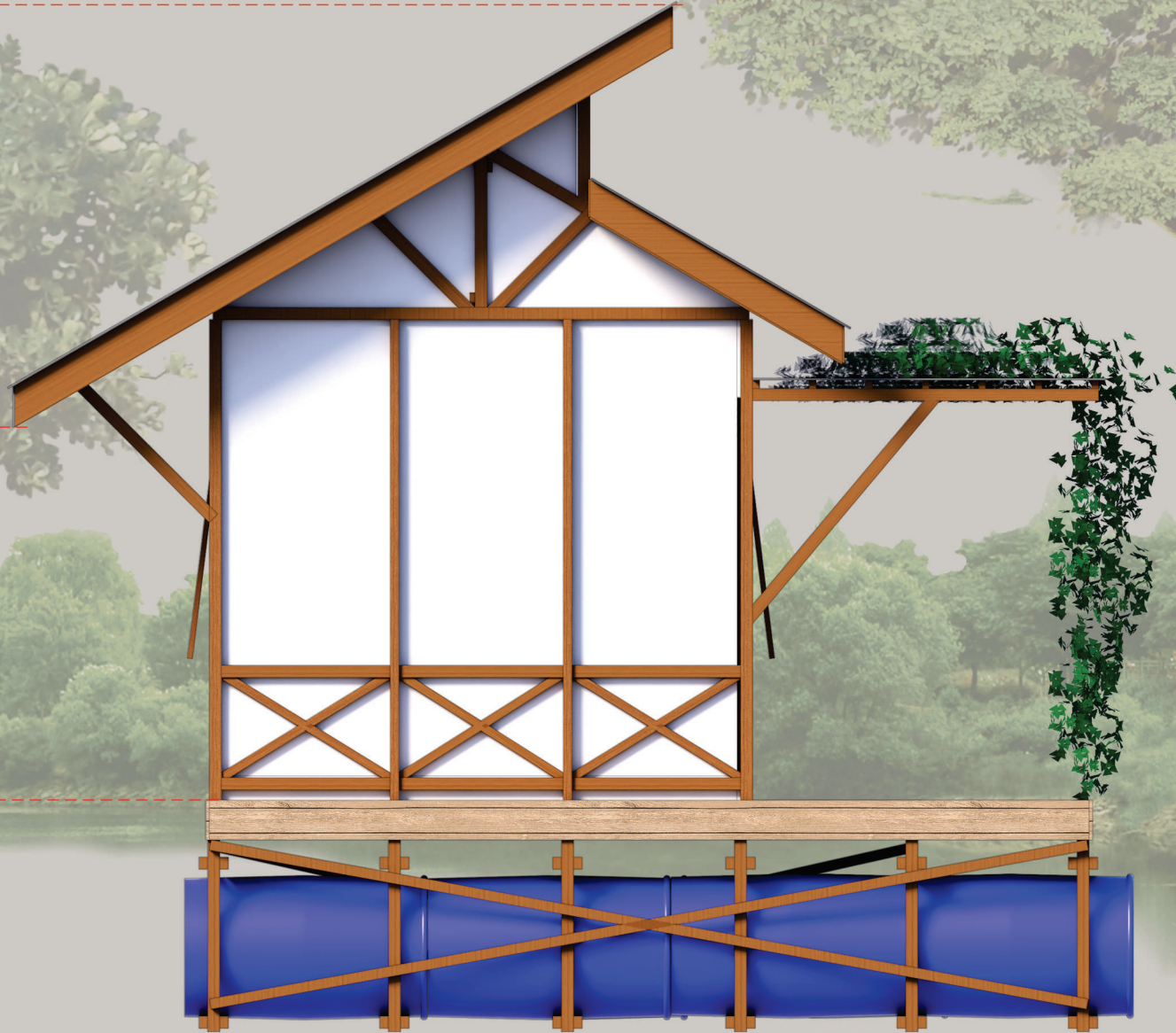
CURIAK ISLAND-BARITO KUALA-SOUTH KALIMANTAN



+4.60

+2.15

±0.00



TAMPAK SAMPIG KIRI



FAKULTAS TEKNIK
UNIVERSITAS LAMBUNG MANGKURAT

arsitektur
universitas lambung mangkurat

