

An increase in inflammatory cells related to the increase incidence of colitis and colorectal cancer

by Agung Ary Wibowo

Submission date: 19-Feb-2023 06:14PM (UTC+0700)

Submission ID: 2017707197

File name: 4.pdf (443.18K)

Word count: 2824

Character count: 15766

An increase in inflammatory cells related to the increase incidence of colitis and colorectal cancer



¹Department of surgery, Digestive Division, Faculty of Medicine, Universitas Lambung Mangkurat, Banjarmasin, Indonesia;

²Surgeon resident, Faculty of Medicine, Universitas Lambung Mangkurat, Banjarmasin, Indonesia;

³Department of Pharmacology, Faculty of Medicine, Universitas Lambung Mangkurat, Banjarmasin, Indonesia;

⁴Department of Anatomical Pathology, Faculty of Medicine, Universitas Lambung Mangkurat, Banjarmasin, Indonesia;

⁵Department of Neurosurgery, Faculty of Medicine, Universitas Lambung Mangkurat, Banjarmasin, Indonesia;

⁶Department of Orthopedic and Traumatology, Faculty of Medicine, Universitas Lambung Mangkurat, Banjarmasin, Indonesia;

*Corresponding author:

Agung Ary Wibowo;
Department of surgery, Digestive Division, Faculty of Medicine, Universitas Lambung Mangkurat, Banjarmasin, Indonesia;
agung.wibowo@ulm.ac.id

Received: 2021-10-21

Accepted: 2022-03-05

Published: 2022-04-30

Agung Ary Wibowo^{1*}, Andrian Sitompul², Alfi Yasmina³, Ika Kustiyah Oktaviyanti⁴, Ardik Lahdimawan⁵, Essy Dwi Damayanthi⁶

ABSTRACT

Background: Inflammation plays an important role in colorectal cancer formation, where colitis inflammatory cells can trigger the production of free radicals that interact with genetic carcinogenesis. Meanwhile, the colonic mucosal epithelium contains goblet cells that function to prevent inflammation. This study aims to examine the correlation between the number of goblet and inflammatory cells in the colon of patients with colorectal cancer, colitis, and healthy colon and their relationship with the incidence of colorectal cancer and colitis.

Methods: Histopathological samples consisting of 30 healthy colons, 30 colons with colitis, and 31 colons with colorectal cancer were examined to obtain the average cell number in 10 or the entire field of view using a light microscope with 400 magnification. Using the Pearson correlation test and Multivariate Multinomial Logistic Regression, these samples were analyzed with SPSS version 26 for Windows.

Results: Consequently, the results showed a weak but significant negative correlation between the number of goblet and inflammatory cells in the colon with colorectal cancer ($r^2=0.055$; $p=0.200$), colitis ($r^2=0.002$, $p=0.833$), and healthy colon ($r^2=0.110$, $p=0.073$). The number of inflammatory cells is significantly associated with the incidence of colorectal cancer (OR=1.326; 95%CI=1.155-1.521; $p=0.000$) and colitis (OR=1.374; 95%CI=1.192-1.583; $p=0.000$) compared to normal colon.

Conclusion: An increase in inflammatory cells is significantly associated with the incidence of colorectal cancer and colitis.

Keywords: Goblet Cells, Inflammatory Cells, Colorectal Cancer.

Cite This Article: Wibowo, A.A., Sitompul, A., Yasmina, A., Oktaviyanti, I.K., Lahdimawan, A., Damayanthi, E.D. 2022. An increase in inflammatory cells related to the increase incidence of colitis and colorectal cancer. *Bali Medical Journal* 11(1): 499-502. DOI: 10.15562/bmj.v11i1.2842

INTRODUCTION

Colitis related to colon cancer is also known as *colitis-associated cancer* (CAC).¹ Mucus as a physical barrier protects the intestinal wall from digestive enzymes and bacteria attachment to the epithelium and prevents inflammation.² The main component of mucus produced by goblet cells is mucin (MUC2).^{3,4}

The release of mucin from goblet cells is controlled by acetylcholine (Ach), histamine, prostaglandin E₂ (PGE₂), and antigen mediators, resulting in a suitable mucus barrier. Acetylcholine regulates the rate at which mucin is released, histamine and PGE₂ induce mucus secretion in the colon. In contrast, antigen mediators induce goblet cells by forming *goblet cell-associated antigen passages*. Furthermore, coordinating mucin secretion, mucus,

ions, fluids, and intestinal motility effectively removes harmful substances and pathogenic bacteria.^{5,6}

Goblet cell depletion reduces mucin production, mucus thickness, increases epithelial permeability, and loosens tight junctions resulting in colitis.⁷ Colitis is characterized by an infiltration of inflammatory cells, including macrophages, neutrophils, T cells, and lymphocytes, into the colonic mucosa.⁸ Consequently, the inflammation produces Reactive Oxygen and Nitrogen Species (RONS). RONS can cause genetic and epigenetic changes which result in carcinogenesis.⁹⁻¹¹

Research on the number of goblet and inflammatory cells with a normal colon has been done more in experimental animals than humans.^{5,9,10} Based on those mentioned above, this study aims to

evaluate the increase of inflammatory cells related to the increased incidence of colitis and colorectal cancer.

METHODS

The histopathological samples comprised 91 patients divided into 3 groups, which are 31 with colorectal cancer, 30 with colitis, and 30 with hemorrhoids as normal colon (control). These were obtained through surgical procedures or endoscopic biopsies.

Each histopathological sample was stained with Hematoxylin-Eosin (HE) and the total number of inflammatory cells, Polymorphonuclear (PMN), Mononuclear (MN), and goblet cells in 10 or all fields of view on endoscopic biopsies were counted using a light microscope with a magnification of 400x. Furthermore, each

sample was examined by two independent observers.

Statistical analysis was carried out using the SPSS version 26.0 for Windows with a 95% confidence level. Then, descriptive analysis of the number of goblet and inflammatory cells in each group was expressed as average \pm SD. Meanwhile, Pearson's test was conducted to analyze the correlation between the number of goblet and inflammatory cells in each group while analyzing the relationship between the cells and the incidence of colorectal cancer and colitis compared to the normal colon in Multivariate Multinomial Logistic Regression. Furthermore, P-value less than 0.05 is considered statistically significant.

RESULTS

The number of goblet and inflammatory cells in colorectal cancer, colitis, and normal colon was depicted in Table 1. The average number of goblet cells (cells/field of view) was 41.74 ± 25.51 in colorectal cancer, 53.67 ± 22.98 in colitis, and 53.65 ± 38.33 in normal colon, respectively (Table 1). In addition, the number of inflammatory cells (cells/field of view) was 148.40 ± 57.37 in colorectal cancer, 157.76 ± 64.74 in colitis, and 79.37 ± 46.99 in normal colon, respectively (Table 1) (Figure 1). There was a significant correlation between the number of goblets and inflammatory cells in colorectal cancer, colitis, and normal colon ($p > 0.05$) (Table 2).

Based on the multivariate multinomial logistic regression, an increase in inflammatory cells number is significantly associated with the incidence of colorectal

cancer ($p=0.000$) and colitis ($p=0.000$) (Table 3).

DISCUSSION

This study shows a negative correlation between the number of goblet and inflammatory cells in the 3 groups. The increase in goblet cells causes changes in the thickness of the mucus layer and increases the risk of inflammation in the intestinal epithelium.^{12,13} Furthermore, goblet cell depletion in patients with colitis which is accompanied by a significant decrease in mucin levels, causes an increase in bacterial penetration into the colonic epithelium.¹⁴

Inflammatory cells are more significantly associated with colitis and colorectal cancer than goblet cells. An increase of 10 inflammatory cells per visual field increased the risk of colorectal cancer and colitis by 32% and 37%. Furthermore, infiltration of inflammatory cells plays a role in increasing marker Myeloperoxidase (MPO), an enzyme produced by inflammatory cells, both in colitis and colorectal cancer.¹⁵

Figure 1 shows that the inflammatory cells fill the lamina propria due to the lack of goblet cells in colorectal cancer. Lymphocytes are visible in both colorectal cancer and colitis. RONS produced by inflammatory cells then directly induce the oxidation and deamination of DNA bases which causes alkalization through lipid peroxidation and DNA damage. Meanwhile, mutations cause carcinogenesis and exacerbate inflammatory processes.¹⁶⁻¹⁸

The effect of goblet cells in triggering colitis and colorectal cancer does not show statistically significant results as it is observed that an increase in the number of goblet cells is associated with a reduced 18% (OR=0.82) risk of colorectal cancer compared to colitis with a P-value close to 0.05 ($p=0.065$). Therefore, the increase in goblet cells is more likely to occur in colitis than in colorectal cancer.

Individuals with susceptibility to goblet cell depletion such as downregulation on Hath1 or healthy individuals triggered by environmental triggers (gastrointestinal infections, toxins, and long-term NSAID users) give rise to an inflammatory process which then sets off an immune response. Furthermore, the goblet cell inflammatory process increases with the release of mucin, Relm- β , and Tff3, which is significant for achieving homeostasis. This inflammatory process leads to stress on the Endoplasmic Reticulum (ER) which then brings about apoptosis and impaired maturation of goblet cells. However, there is impaired mucin glycosylation and decreased mucin synthesis. Consequently, this causes a decrease in the quality and amount of mucus as a mucosal barrier and facilitates the occurrence of colorectal inflammation.^{3,7,9,19} Individuals with genetic disorders or ER goblet cell damage may have a much lower goblet cell number than a normal one or when the body is still achieving homeostasis.

Weak goblet cell relationships are also shown by Periyakoop et al. and Makkink MK et al., where the number of goblet cells can remain large in colorectal cancer

Table 1. Number of Goblet and Inflammatory Cells in Colorectal Cancer, Colitis, and Normal Colon.

Variables	Minimum	Maximum	Median	Mean \pm SD
Number of Goblet Cells (cells/field of view)				
Colorectal Cancer	3.40	104.30	35.30	41.74 \pm 25.51
Colitis	18.00	100.50	47.10	53.67 \pm 22.98
Normal Colon (Hemorrhoids)	3.00	146.40	45.00	53.65 \pm 38.33
Number of Inflammatory Cells (cells/field of view)				
Colorectal Cancer	49.20	300.60	140.30	148.40 \pm 57.37
Colitis	66.70	340.00	151.20	157.76 \pm 64.74
Normal Colon (Hemorrhoids)	13.20	182.30	67.00	79.37 \pm 46.99

Table 2. The correlation coefficient between the number of goblet and inflammatory cells in colorectal cancer, colitis, and normal colon using the Pearson correlation test.

Parameter	Colorectal Cancer	Colitis	Normal Colon (Hemorrhoids)
Coefficient correlation (r)	-0.236	-0.040	-0.333
p-value	0.200	0.833	0.073

and colitis but differ in morphology and ability to produce MUC2.^{20,21} Moreover, several conditions can affect the total goblet cells such as the presence of fecal diversion in patients with psychological stress conditions.²²⁻²⁴ In contrast to the study by Leow CC et al., using *Alcian blue* and immunofluorescence, it was observed that the number of goblet cells and mucin in the colon adenocarcinoma decreased dramatically when compared to the healthy colon.^{23,19} Hence, these numbers are important in the pathogenesis of colitis

and colorectal cancer. However, changes in morphology and the ability to produce MUC2 also have an important role.

We do have several limitations to this study. There was no goblet cell morphology assessment, no histochemical staining other than HE and immunofluorescence. Also, not examining the condition before a biopsy or surgery can affect the study results. In conclusion, the number of inflammatory cells is associated with the incidence of colorectal cancer and colitis, while the number of goblet cells is not.

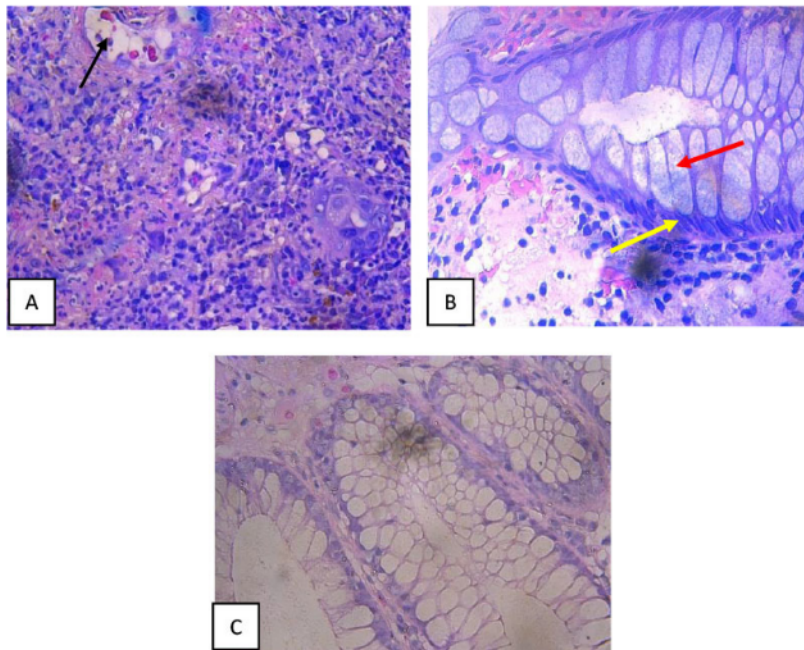


Figure 1. Colorectal cancer. (A) minimal goblet cell (black arrow); (B) Colitis: goblet cell count (red arrow) is still quite abundant among inflammatory cells (yellow arrow); and (C) Healthy colon: high goblet cell number.

Table 3. The relationship between goblet and inflammatory cells with the incidence of colorectal cancer, colitis, and healthy colon.

Variables	OR	95%CI	p
Colitis vs. normal colon			
Goblet cell number	1.160	0.940-1.433	0.167
Inflammatory cell number	1.374	1.192-1.583	0.000*
Colorectal cancer vs. normal colon			
Goblet cell number	0.956	0.770-1.188	0.685
Inflammatory cell number	1.326	1.155-1.521	0.000*
Colorectal cancer vs. colitis			
Goblet cell number	0.824	0.671-1.012	0.065
Inflammatory cell number	1.965	0.885-1.052	0.417

*Multivariate multinomial logistic regression: Statistically significant if p-value less than 0.05; OR: Odds Ratio; CI: Confidence Interval.

CONCLUSION

An increase in inflammatory cells is significantly associated with the incidence of colorectal cancer and colitis. However, future studies with a bigger sample size and prospective study design are suggested to clarify the causal effect.

ETHICAL CLEARANCE

This study was declared ethically feasible by the Health Research Ethics Commission, Medicine Faculty, University of Lambung Mangkurat, Banjarmasin, Indonesia. (No.633/KEPK-FK ULM/EC/VI/2021).

CONFLICT OF INTEREST

The authors declare that they have no known competing financial interests or personal relationships that could have appeared to influence the work reported in this paper.

FUNDING

No funding sources.

AUTHOR CONTRIBUTIONS

All authors equally contribute to the study from the conceptual framework, methodology, validation, formal analysis, review and editing until reporting the study results through publication.

REFERENCES

- Long AG, Lundsmith ET, Hamilton KE. Inflammation and Colorectal Cancer. *Curr Colorectal Cancer Rep.* 2017;13(4):341-351.
- Kaur A, Goggolidou P. Ulcerative colitis: Understanding its cellular pathology could provide insights into novel therapies. *J Inflamm (United Kingdom).* 2020;17(1):1-8.
- Allaire JM, Morampudi V, Crowley SM, Stahl M, Yu H, Bhullar K, et al. Frontline defenders: Goblet cell mediators dictate host-microbe interactions in the intestinal tract during health and disease. *Am J Physiol - Gastrointest Liver Physiol.* 2018;314(3):G360-G377.
- Kim YS, Ho SB. Intestinal goblet cells and mucins in health and disease: Recent insights and progress. *Curr Gastroenterol Rep.* 2010;12(5):319-330.
- Birchenough GMH, Johansson MEV, Gustafsson JK, Bergström JH, Hansson GC. New developments in goblet cell mucus secretion and function. *Mucosal Immunol.* 2015;8(4):712-719.
- Knoop KA, Newberry RD. Goblet cells: multifaceted players in immunity at mucosal

- surfaces. *Mucosal Immunol.* 2018;11(6):1551-1557.
7. Sheng YH, Hasnain SZ, Florin THJ, McGuckin MA. Mucins in inflammatory bowel diseases and colorectal cancer. *J Gastroenterol Hepatol.* 2012;27(1):28-38.
 8. Yao D, Dong M, Dai C, Wu S. Inflammation and Inflammatory Cytokine Contribute to the Initiation and Development of Ulcerative Colitis and Its Associated Cancer. *Inflamm Bowel Dis.* 2019;25(10):1595-1602.
 9. Itzkowitz SH, Yio X. Inflammation and cancer-IV. Colorectal cancer in inflammatory bowel disease: The role of inflammation. *Am J Physiol-Gastrointest Liver Physiol.* 2004;287(1 50-1).
 10. Van der Sluis M, De Koning BAE, De Bruijn ACJM, et al. Muc2-Deficient Mice Spontaneously Develop Colitis, Indicating That MUC2 Is Critical for Colonic Protection. *Gastroenterology.* 2006;131(1):117-129.
 11. Wibowo AA, Pardjianto B, Sumitro SB, Kania N, Handono K. Decreased expression of MUC2 due to a decrease in the expression of lectins and apoptotic defects in colitis patients. *Biochem Biophys Reports.* 2019;19:100655.
 12. Grondin JA, Kwon YH, Far PM, Haq S, Khan WI. Mucins in Intestinal Mucosal Defense and Inflammation: Learning From Clinical and Experimental Studies. *Front Immunol.* 2020;11:2054.
 13. Zhang M, Wu C. The relationship between intestinal goblet cells and the immune response. *Biosci Rep.* 2020;40(10):1-11.
 14. Alipour M, Zaidi D, Valcheva R, Jovel J, Martínez I, Sergi C, et al. Mucosal barrier depletion and loss of bacterial diversity are primary abnormalities in paediatric ulcerative colitis. *J Crohn's Colitis.* 2016;10(4):462-471.
 15. Roncucci L, Mora E, Mariani F, Bursi S, Pezzi A, Rossi G, et al. Myeloperoxidase-positive cell infiltration in colorectal carcinogenesis as indicator of colorectal cancer risk. *Cancer Epidemiol Biomarkers Prev.* 2008;17(9):2291-2297.
 16. Terzić J, Grivennikov S, Karin E, Karin M. Inflammation and Colon Cancer. *Gastroenterology.* 2010;138(6):2101-2114.
 17. Meira LB, Bugni JM, Green SL, Lee CW, Pang B, Borenshtein D, et al. DNA damage induced by chronic inflammation contributes to colon carcinogenesis in mice. *J Clin Invest.* 2008;118(7):2516-2525.
 18. Kay J, Thadhani E, Samson L, Engelward B. Inflammation-induced DNA damage, mutations and cancer. *DNA Repair (Amst).* 2019;83:102673.
 19. Leow CC, Romero MS, Ross S, Polakis P, Gao WQ. *Hath1*, down-regulated in colon adenocarcinomas, inhibits proliferation and tumorigenesis of colon cancer cells. *Cancer Res.* 2004;64(17):6050-6057.
 20. Periyakoil P, Clarke MF, Sahoo D. Identification of histological features to predict MUC2 expression in colon cancer tissues. *bioRxiv preprint.* 2019.
 21. Makkink MK, Schwerbrock NMJ, Mähler M, Boshuizen JA, Renes IB, Cornberg M, et al. Fate of goblet cells in experimental colitis. *Dig Dis Sci.* 2002;47(10):2286-2297.
 22. Guzmán-Mejía E, Godínez-Victoria M, Vega-Bautista A, Pacheco-Yépez J, Drago-Serrano ME. Intestinal homeostasis under stress siege. *Int J Mol Sci.* 2021;22(10):1-15.
 23. Handayani AR, Widhiastuti E, Susila NKN, Ekawati NP, Widiana IGR, Kusumadaj MA, et al. Effects of topical vitamin A on conjunctival goblet cell density after small incision cataract surgery. *Bali Medical Journal.* 2016;5(3):538-542.
 24. Mello R de O, da Silva CMG, Fonte FP, Silva DL, Pereira JA, Margarido NF, et al. Evaluation of the number of goblet cells in crypts of the colonic mucosa with and without fecal transit. Eval number goblet cells crypts Colon mucosa with without fecal transit. 2012;39(2):139-145.



This work is licensed under a Creative Commons Attribution

An increase in inflammatory cells related to the increase incidence of colitis and colorectal cancer

ORIGINALITY REPORT

16%

SIMILARITY INDEX

%

INTERNET SOURCES

16%

PUBLICATIONS

%

STUDENT PAPERS

PRIMARY SOURCES

- 1 "European Congress on Osteoporosis and Osteoarthritis (ESCEO13-IOF): Poster Presentation Abstracts", Osteoporosis International, 2013
Publication 2%
- 2 You Wu, Jiaojiao Li, Wenjiao Ding, Zheng Ruan, Li Zhang. "Enhanced Intestinal Barriers by Puerarin in Combination with Tryptophan", Journal of Agricultural and Food Chemistry, 2021
Publication 2%
- 3 "Abstracts", Pharmacoepidemiology and Drug Safety, 2019
Publication 2%
- 4 Glauber R. de S. Araújo, Carolina de L. Alcantara, Noêmia Rodrigues, Wanderley de Souza, Bruno Pontes, Susana Frases. " Let it bud: an ultrastructural study of surface during budding events ", Cold Spring Harbor Laboratory, 2020
Publication 1%

5

Anthony Lopez, Lieven Pouillon, Laurent Beaugerie, Silvio Danese, Laurent Peyrin-Biroulet. "Colorectal cancer prevention in patients with ulcerative colitis", *Best Practice & Research Clinical Gastroenterology*, 2018

Publication

1 %

6

Ichsan Rizany, Rr Tutik Sri Hariyati, Hanny Handayani. "Factors that affect the development of nurses' competencies: a systematic review", *Enfermería Clínica*, 2018

Publication

1 %

7

Harapan Parlindungan Ringoringo. "Parapagus dicephalus conjoined twins with tribrachius and a single heart – A scarce variant of conjoined twins: A case report", *Human Pathology: Case Reports*, 2021

Publication

1 %

8

T Boraska Jelavic. "Microsatellite GT polymorphism in the toll-like receptor 2 is associated with colorectal cancer", *Clinical Genetics*, 8/2006

Publication

1 %

9

Min Wang, Lixia Wang, Xian Tan, Lei Wang, Xia Xiong, Yancan Wang, Qiye Wang, Huansheng Yang, Yulong Yin. "The developmental changes in intestinal epithelial cell proliferation, differentiation, and shedding in weaning piglets", *Animal Nutrition*, 2022

1 %

10

Emma Wigsten, Thomas Kvist, Lars Bjørndal, Victoria S Dawson et al. "Patient record assessment of results and related resources spent during one year after initiation of root canal treatment in a Swedish public dental organisation", *International Endodontic Journal*, 2022

Publication

1 %

11

Sai Sandhya Addanki, Venkatesh Chandrasekaran, Preeti Kandasamy. "Attention Deficit Hyperactivity Disorder in Preschool Children: A Cross-Sectional Study of Clinical Profile and Co-morbidity", *Indian Journal of Psychological Medicine*, 2022

Publication

<1 %

12

Chang Youp Ok, Sera Park, Hye-Ock Jang, Takashi Takata, Moon-Kyoung Bae, Yong-Deok Kim, Mi Heon Ryu, Soo-Kyung Bae. "Visfatin Induces Senescence of Human Dental Pulp Cells", *Cells*, 2020

Publication

<1 %

13

Misumi Shinoda. "Early-stage blocking of Notch signaling inhibits the depletion of goblet cells in dextran sodium sulfate-induced colitis in mice", *Journal of Gastroenterology*, 02/19/2010

Publication

<1 %

14

Piekarska, J.. "Trichinella spiralis: The influence of short chain fatty acids on the proliferation of lymphocytes, the goblet cell count and apoptosis in the mouse intestine", *Experimental Parasitology*, 201108

Publication

<1 %

15

Pérez-Bosque, Anna, Lluïsa Miró, Mònica Maijó, Javier Polo, Joy Campbell, Louis Russell, Joe Crenshaw, Eric Weaver, and Miquel Moretó. "Dietary intervention with serum-derived bovine immunoglobulins protects barrier function in a mouse model of colitis", *AJP Gastrointestinal and Liver Physiology*, 2015.

Publication

<1 %

16

Muhammad Ilham Aldika Akbar, Rima Irwinda, Julian Dewantiningrum, Nuswil Bernolian et al. "Clinical Factors Associated with Maternal Death in Pregnant Women Infected by COVID-19 in Indonesia: A Multicenter Prospective Study", *Research Square Platform LLC*, 2022

Publication

<1 %

17

Tom Breugelmans, Baptiste Oosterlinck, Wout Arras, Hannah Ceuleers et al. "The role of mucins in gastrointestinal barrier function during health and disease", *The Lancet Gastroenterology & Hepatology*, 2022

Publication

<1 %

18

Tomáš Hubinský, Ján Legény, Robert Špaček.
"STEM and HASS Disciplines in Architectural
Education: Readiness of FAD-STU Bachelor
Students for Practice", Education Sciences,
2022

Publication

<1 %

19

Tsuchiya, K., M. Komori, Q. Y. Zheng, P.
Ferrieri, and J. Lin. "Interleukin-10 is an
Essential Modulator of Muroid Metaplasia in a
Mouse Otitis Media Model", Annals of Otolaryngology
& Rhinology & Laryngology, 2008.

Publication

<1 %

20

Vladimir Yu. Karpov, Svetlana Yu. Zavalishina,
Alexander V. Dorontsev, Anastasia A.
Svetlichkina et al. "Physiological Response of
the Physical Capabilities of Adolescents with
Sensorineural Hearing Loss to Regular
Adaptive Handball", Biomedical and
Pharmacology Journal, 2021

Publication

<1 %

21

Yoonmi Lee, Hye Rim Byeon, Seo-Yul Jang,
Moon-Gi Hong et al. "Oral administration of
Faecalibacterium prausnitzii and Akkermansia
muciniphila strains from humans improves
atopic dermatitis symptoms in DNCB induced
NC/Nga mice", Scientific Reports, 2022

Publication

<1 %

22

J. X. Wang. "Developmental Morphology of the Small Intestine of African Ostrich Chicks", Poultry Science, 12/01/2008

Publication

<1 %

23

Jiang Xin. "Critical signaling pathways governing colitis-associated colorectal cancer: Signaling, therapeutic implications, and challenges", Digestive and Liver Disease, 2022

Publication

<1 %

24

Stina Bodén, Robin Myte, Justin Harbs, Anneli Sundkvist et al. "C-reactive Protein and Future Risk of Clinical and Molecular Subtypes of Colorectal Cancer", Cancer Epidemiology, Biomarkers & Prevention, 2020

Publication

<1 %

Exclude quotes On

Exclude matches Off

Exclude bibliography On