



###PROOF OF SUBMISSION

ESPR-D-19-11554 - ESPR: Submission Confirmation for Aluminum leaching from water treatment sludge and kinetic study  
- [EMID:eb6cd561ecb60b08] External Inbox x

Environmental Science and Pollution Research <em@editorialmanager.com>
to me ▾

Wed, Dec 25, 2019, 10:30 AM   

Dear Dr. Putra,

Your submission entitled "Aluminum leaching from water treatment sludge and kinetic study" has been received by Environmental Science and Pollution Research

The submission id is: **ESPR-D-19-11554**

Please refer to this number in any future correspondence.

You will be able to check on the progress of your paper by logging on to Editorial Manager as an author. The URL is <https://www.editorialmanager.com/espr/>.

Thank you for submitting your work to our journal.

Kind regards,

Editorial Office
Environmental Science and Pollution Research

####Revision Required

ESPR: Your manuscript ESPR-D-19-11554 - [EMID:59fd1ee3c2f73982] External Inbox x



Ta Yeong Wu <em@editorialmanager.com>
to me ▾

Mon, Feb 17, 2020, 11:39 PM



CC: wu.ta.yeong@monash.edu, tayeong@hotmail.com

Ref.: Ms. No. ESPR-D-19-11554
Aluminum leaching from water treatment sludge and kinetic study
Environmental Science and Pollution Research

Dear Dr. Putra,

Editor and reviewers have now commented on your paper. You will see that there are a number of issues that need to be addressed significantly.

We ask that you give the comments raised by the referees your careful consideration and that you submit a revised version of your manuscript as well as an itemized reply to each of the Editor's and reviewers' comments. Please make sure to submit your editable source files (i. e. Word, TeX)

Your revision is due by 18 Mar 2020.

If you decide to revise the work, please submit a list of changes or a rebuttal against each point which is being raised when you submit the revised manuscript.

If you need extra time to revise your manuscript, please contact Mrs. Berbon + joanne.berbon@springernature.com

To submit a revision, go to <https://www.editorialmanager.com/espr/> and log in as an Author. You will see a menu item called 'Submissions Needing Revision'. You will find your submission record there.

I am looking forward to receiving you revised manuscript!

Yours sincerely,

Assoc. Prof. Ta Yeong Wu
Editor
Environmental Science and Pollution Research

Editor:

Apart from both reviewers' comments, other concerns which must be considered by the authors are:

- Page 1, Lines 58-61: Make sure the Keywords used in the revised manuscript are not repeating the words used in the Title. Thus, please replace "aluminum", "kinetic" and "leaching" with other suitable Keywords which are not found in the title. Make sure 6 to 8 Keywords are provided and abbreviations such as HCl and WTS should be dismissed.
- Page 3, Lines 34-44: Please highlight the novelty of this work. Although sulfuric acid is commonly used, why hydrochloric acid was chosen in this study?
- Throughout the manuscript: Make sure the citations are correctly following the Guidelines of this journal, whereby no comma is needed. For examples, (He et al., 2019) should be changed into (He et al. 2019); and (Haynes & Zhou, 2015) should be changed into (Haynes and Zhou 2015).
- If relevant, include error bars for all data presented in Tables and Figures.
- Remove 'Cover Letter' from your 'Supplementary Material'.
- Only if applicable, the authors are encouraged to identify and use the latest articles of similar research which were published recently (2018-present) in Environmental Science and Pollution Research.
- The authors must let competent person in English to proof-read the revised manuscript before re-submission of manuscript to Environmental Science and Pollution Research.
- The authors must submit their revised manuscript that highlights any changes to the text in YELLOW for facilitating the reviewing process. The authors must submit their revised manuscript that highlights any changes to the text in YELLOW for facilitating the reviewing process.

Reviewer #1:

This study could be published in this Journal after some issues revised.

1. Readers are not know the HCl leaching process from the current title.
2. The description of leaching condition in Abstract are too tediously long.
3. Al content determination with ICP-OES should add to Materials and characterization but not in the leaching process part.
4. The mineral phases for Al element is corundum Al_2O_3 , why the reaction in the leaching process is $Al(OH)_3$?
5. The composition of Al is 32.78%, this means 32.78% is composited of corundum and kaolinite at the same time, whether the Al element both in corundum and kaolinite could be leached or not?
6. The format of Reference should be unified in whole manuscript.
7. In literature data validation part, there is little research meaning by activation energy comparison without a convincing linear fit coefficient as well as different raw materials. Such as a lower fit coefficient with a higher activation energy would led to a inaccurate conclusion. So you would better provide a table for activation energy and coefficient list to better comparison.
8. The research significance from the obtained kinetic results analysis is inadequate.
9. You'd better learn from follow papers for kinetic results analyses and validation. (1)<https://doi.org/10.1007/s11837-017-2692-0>;
(2) <https://doi.org/10.1016/j.jclepro.2019.119256>;
10. The founding importance in conclusion is too simple.
11. Some English term need to be further modified.

Reviewer #2:

The following are the comments or suggested corrections:

Abstract, line 26: should read "environmental problems"

pg 2, line 24: Should read "ion exchange"

pg 2 & 3, last and first line respectively: While this is true, HCl is very difficult to handle and very corrosive to stainless steel thus it requires special lined vessels or glass vessel when it is used for leaching. Thus, based on these factors its use is less preferred industrial as compared to sulphuric acid. On the other hand its also a more aggressive acid thus tends to have higher extraction efficiency compared to sulphuric acid. Thus all these factors need to be taken into account when considering acid selection.

Results and discussion: Effect of acid concentration: Is there a significant difference between Al extraction at 2M and 4M? You may need to justify this with a statistical test. Based on the difference is there a justification to double acid concentration from 2 M to 4 M? In my view 2M acid concentration should have been used.

pg 7, line 34: Correct the part "solvent.(Raza et al., 2015)"

pg 7 & 8, line 59-61 & 1-5 respectively: Be specific on which process you are referring to. Also this part need rephrasing its not clear "It is reported that the chemical reaction controlled the kinetic process (Brantley et al., 2008); on the other hand, the kinetic model of product-layer diffusion was proven to fit the experimental data (Cheng et al., 2012)."

pg 9, line 22-24: Be more specific on what is meant by higher acid concentration? what is the lower limit for this. For the second stage $R^2 > 0.9$ for both chemical reaction and diffusion control, are both not controlling the process? Since K_i is smaller is it not the rate limiting at this stage?

The authors should also address what happens to the extracted Al and residual sludge after extraction. A paper of this nature must also demonstrate the suggested process is sustainable and derives value from a waste material without creating secondary pollution e.g. a toxic solid residual in order to be more suitable for this journal.

####RESPONSE AND REBUTTAL TO REVIEWERS AND EDITOR

###REVISED MANUSCRIPT

##COVER LETTER FOR SUBMISSION OF REVISION

Professor Ta Yeong Wu
Editor
Environmental Science and Pollution Research

Ref: ESPR-D-19-11554

Title: Aluminum leaching from water treatment sludge and kinetic study

Dear Prof. Wu,

We are very grateful for your email of February 17, 2020 regarding our above mentioned paper that was submitted to Environmental Science and Pollution Research. We are also grateful to the editor and the reviewers for their valuable comments that drew our attention to points that would improve the quality of our paper. We have taken into consideration all comments raised by the reviewers and revised the manuscript accordingly. An itemized response to their comments is listed in the response to reviewers' comments. We do hope that the revised version with changes marked by yellow highlight will come to your satisfaction.

Thanks for your attention. We do hope to hear positively from you soon.

Best Regards.

M.D. Putra, Corresponding author, on behalf of the coauthor

Meilana Dharma Putra, Ph.D.
Chemical Engineering Department
Lambung Mangkurat University
Banjarmasin 70123
Indonesia
Mobile: +6282281226215
Email: mdputra@ulm.ac.id;

Environmental Science and Pollution Research

Aluminum leaching from water treatment sludge using hydrochloric acid and kinetic study

--Manuscript Draft--

Manuscript Number:	ESPR-D-19-11554R1	
Full Title:	Aluminum leaching from water treatment sludge using hydrochloric acid and kinetic study	
Article Type:	Research Article	
Corresponding Author:	Meilana Dharma Putra, Ph.D. Universitas Lambung Mangkurat Banjarbaru, South Kalimantan, Indonesia INDONESIA	
Corresponding Author Secondary Information:		
Corresponding Author's Institution:	Universitas Lambung Mangkurat	
Corresponding Author's Secondary Institution:		
First Author:	Agus Mirwan	
First Author Secondary Information:		
Order of Authors:	Agus Mirwan	
	Meilana Dharma Putra, Ph.D.	
	Jhy-Chern Liu, Ph.D.	
	Susianto Susianto, Ph.D.	
	Ali Altway	
	Renanto Handogo, Ph.D.	
Order of Authors Secondary Information:		
Funding Information:	Kementerian Riset, Teknologi dan Pendidikan Tinggi	Dr. Agus Mirwan
Abstract:	<p>Water treatment sludge (WTS) is abundantly produced in the world; the waste contributes to the environmental problems. Therefore for WTS utilization, aluminum leaching was employed using hydrochloric acid in this study. Al leaching efficiency increased from 72% to 80% as hydrochloric acid concentration increased from 1M to 4M. Decreasing the particle size and increasing the temperature increased Al leaching efficiency. The proposed kinetic model revealed that the rate controlling step followed a series of two leaching mechanisms: initially controlled by product-layer diffusion and then by a chemically controlled reaction. For instance, at 70 °C, the initial stage is well fitted by product-layer diffusion ($R^2 = 0.87$) compared to $R^2 = 0.60$ for chemical reaction; while for the second stage $R^2 = 0.95$ was observed via chemical reaction compared to $R^2 = 0.74$ for product-layer diffusion. The activation energies in these two stages were 9.58 kJ/mol and 10.73 kJ/mol, respectively. The proposed model was well validated by using data from literature and thus will be useful for other applications of leaching and extraction processes.</p>	
Response to Reviewers:	<p>Editor's and reviewers' comments:</p> <p>Editor: Apart from both reviewers' comments, other concerns which must be considered by the authors are: Response: We are very grateful to the Editor for his comments that helped in improving the revised version of this manuscript.</p> <p>C1: Page 1, Lines 58-61: Make sure the Keywords used in the revised manuscript are</p>	

not repeating the words used in the Title. Thus, please replace “aluminum”, “kinetic” and “leaching” with other suitable Keywords which are not found in the title. Make sure 6 to 8 Keywords are provided and abbreviations such as HCl and WTS should be dismissed.

R1: The Keywords have been changed as suggested.

C2: Page 3, Lines 34-44: Please highlight the novelty of this work. Although sulfuric acid is commonly used, why hydrochloric acid was chosen in this study?

R2: The novelty of this work has been highlighted in the revised manuscript regarding the proposed model. The selection of hydrochloric acid has been also added in the revised manuscript.

C3: Throughout the manuscript: Make sure the citations are correctly following the Guidelines of this journal, whereby no comma is needed. For examples, (He et al., 2019) should be changed into (He et al. 2019); and (Haynes & Zhou, 2015) should be changed into (Haynes and Zhou 2015).

R3: The citations style has been changed as suggested.

C4: If relevant, include error bars for all data presented in Tables and Figures.

R4: The error bars have been added in the manuscript.

C5: Remove ‘Cover Letter’ from your ‘Supplementary Material’.

R5: The cover letter has been removed in Supplementary Material.

C6: Only if applicable, the authors are encouraged to identify and use the latest articles of similar research which were published recently (2018-present) in Environmental Science and Pollution Research.

R6: The recent references in the ESPR Journal have been added in the revised manuscript.

C7: The authors must let competent person in English to proof-read the revised manuscript before re-submission of manuscript to Environmental Science and Pollution Research.

R7: A proof-read of the revised manuscript has been conducted by the competent person in English.

C8: The authors must submit their revised manuscript that highlights any changes to the text in YELLOW for facilitating the reviewing process.

R8: The changes in the revised manuscript have been indicated by yellow highlight.

Reviewer #1:

This study could be published in this Journal after some issues revised.

Response: We are very grateful to the reviewer for his comments that helped in improving the revised version of this manuscript.

C1: Readers are not know the HCl leaching process from the current title.

R1: The title has been changed to include the HCl.

C2: The description of leaching condition in Abstract are too tediously long.

R2: The abstract has been revised as suggested.

C3: Al content determination with ICP-OES should add to Materials and characterization but not in the leaching process part.

R3: The part has been moved to Materials and characterization as suggested.

C4: The mineral phases for Al element is corundum Al_2O_3 , why the reaction in the leaching process is $Al(OH)_3$?

R4: We do appreciate the reviewer for the conscientious review. It was reported that Al_2O_3 cannot react with acid at normal temperature; only the solid-phase amorphous that is in the sludge precipitate can be leached out by acidifying the sludge (Cheng et al., 2012). On the other hand, $Al(OH)_3$ (amorphous) is the most soluble form of aluminum found in soils; while, Aluminum (Al) is the major element of the waste sludge in the form of $Al(OH)_3$ (Brown and Associates, 1980). In addition, Al_2O_3 in the form of aluminum hydroxide-containing sludge is highly soluble in both acidic and basic

solutions (Sposito, 1996).
Cheng W-P, Fu C-H, Chen P-H, Yu R-F (2012) Dynamics of aluminum leaching from water purification sludge. J Hazard Mater 217-218: 149-155.
Brown K.W. and Associates, Hazardous Waste Land Treatment, College Station, Texas, 1980.
Sposito G., The Environmental Chemistry of Aluminum, 2nd ed., Boca Raton, Florida, 1996. CRC Press, 1996

C5: The composition of Al is 32.78%, this means 32.78% is composed of corundum and kaolinite at the same time, whether the Al element both in corundum and kaolinite could be leached or not?

R5: We do thank the reviewer for the comment; the clarification for this regard has been described in the previous response. In addition, the FTIR results also confirmed the component of kaolinite as shown in Table 1.

C6: The format of Reference should be unified in whole manuscript.

R6: The format of reference has been now unified in the revised manuscript.

C7: In literature data validation part, there is little research meaning by activation energy comparison without a convincing linear fit coefficient as well as different raw materials. Such as a lower fit coefficient with a higher activation energy would led to a inaccurate conclusion. So you would better provide a table for activation energy and coefficient list to better comparison.

R7: Table for comparison of activation energy has been added in the revised manuscript. We do thank the reviewer for the comment that helped in improving the revised version of this manuscript.

C8: The research significance from the obtained kinetic results analysis is inadequate.

R8: The kinetic results analysis has been revised as suggested.

C9: You'd better learn from follow papers for kinetic results analyses and validation.

(1)<https://doi.org/10.1007/s11837-017-2692-0>;

(2) <https://doi.org/10.1016/j.jclepro.2019.119256>;

R9: The suggested references have been added in the revised manuscript. We do thank the reviewer for kind suggestion.

C10: The founding importance in conclusion is too simple.

R10: The conclusion has been modified as suggested.

C11: Some English term need to be further modified.

R11: The English has been checked by the competent person.

Reviewer #2:

The following are the comments or suggested corrections:

Response: We are very grateful to the reviewer for his comments that helped in improving the revised version of this manuscript.

C1: Abstract, line 26: should read "environmental problems"

R1: The words have been changed as suggested.

C2: pg 2, line 24: Should read "ion exchange"

R2: The words have been changed as suggested.

C3: pg 2 & 3, last and first line respectively: While this is true, HCl is very difficult to handle and very corrosive to stainless steel thus it requires special lined vessels or glass vessel when it is used for leaching. Thus, based on these factors its use is less preferred industrial as compared to sulphuric acid. On the other hand its also a more aggressive acid thus tends to have higher extraction efficiency compared to sulphuric acid. Thus all these factors need to be taken into account when considering acid selection.

R3: We do thank the reviewer for the comment and knowledge. We added the explanation into the revised manuscript with relevant literature.

C4: Results and discussion: Effect of acid concentration: Is there a significant

	<p>difference between Al extraction at 2M and 4M? You may need to justify this with a statistical test. Based on the difference is there a justification to double acid concentration from 2 M to 4 M? In my view 2M acid concentration should have been used.</p> <p>R4: We do thank the reviewer for the comment; we have added the statistical test for the concentration. It was observed that the range of concentration showed the significant effect.</p> <p>C5: pg 7, line 34: Correct the part "solvent.(Raza et al., 2015)"</p> <p>R5: The part was corrected. We do thank the reviewer for the conscientious finding.</p> <p>C6: pg 7 & 8, line 59-61 & 1-5 respectively: Be specific on which process you are referring to. Also this part need rephrasing its not clear "It is reported that the chemical reaction controlled the kinetic process (Brantley et al., 2008); on the other hand, the kinetic model of product-layer diffusion was proven to fit the experimental data (Cheng et al., 2012)."</p> <p>R6: The sentences have been rephrased in the revised manuscript.</p> <p>C7: pg 9, line 22-24: Be more specific on what is meant by higher acid concentration? what is the lower limit for this. For the second stage $R^2 > 0.9$ for both chemical reaction and diffusion control, are both not controlling the process? Since K_i is smaller is it not the rate limiting at this stage?</p> <p>R7: We do thank the reviewer for the bright comment. The sentence has been revised. The higher concentration means $> 1M$. As rightfully suggested by the reviewer, K_i is smaller; it means that the diffusion controls the process; however, this can't be applied when the R^2 is < 0.9 such as in the case of particle size and temperature effect. We have revised the manuscript to avoid misinterpretation. Again we do thank the reviewer for the conscientious review.</p> <p>C8: The authors should also address what happens to the extracted Al and residual sludge after extraction. A paper of this nature must also demonstrate the suggested process is sustainable and derives value from a waste material without creating secondary pollution e.g. a toxic solid residual in order to be more suitable for this journal.</p> <p>R8: The suggestion has been added in the revised manuscript at the last part before conclusion. We do thank the reviewer for great comment that helps in improving the quality of the manuscript.</p>
Additional Information:	
Question	Response
§Are you submitting to a Special Issue?	No

Editor's and reviewers' comments:

Editor:

Apart from both reviewers' comments, other concerns which must be considered by the authors are:

Response: We are very grateful to the Editor for his comments that helped in improving the revised version of this manuscript.

C1: Page 1, Lines 58-61: Make sure the Keywords used in the revised manuscript are not repeating the words used in the Title. Thus, please replace “aluminum”, “kinetic” and “leaching” with other suitable Keywords which are not found in the title. Make sure 6 to 8 Keywords are provided and abbreviations such as HCl and WTS should be dismissed.

R1: The Keywords have been changed as suggested.

C2: Page 3, Lines 34-44: Please highlight the novelty of this work. Although sulfuric acid is commonly used, why hydrochloric acid was chosen in this study?

R2: The novelty of this work has been highlighted in the revised manuscript regarding the proposed model. The selection of hydrochloric acid has been also added in the revised manuscript.

C3: Throughout the manuscript: Make sure the citations are correctly following the Guidelines of this journal, whereby no comma is needed. For examples, (He et al., 2019) should be changed into (He et al. 2019); and (Haynes & Zhou, 2015) should be changed into (Haynes and Zhou 2015).

R3: The citations style has been changed as suggested.

C4: If relevant, include error bars for all data presented in Tables and Figures.

R4: The error bars have been added in the manuscript.

C5: Remove ‘Cover Letter’ from your ‘Supplementary Material’.

R5: The cover letter has been removed in Supplementary Material.

C6: Only if applicable, the authors are encouraged to identify and use the latest articles of similar research which were published recently (2018-present) in Environmental Science and Pollution Research.

R6: The recent references in the ESPR Journal have been added in the revised manuscript.

C7: The authors must let competent person in English to proof-read the revised manuscript before re-submission of manuscript to Environmental Science and Pollution Research.

R7: A proof-read of the revised manuscript has been conducted by the competent person in English.

C8: The authors must submit their revised manuscript that highlights any changes to the text in YELLOW for facilitating the reviewing process.

R8: The changes in the revised manuscript have been indicated by yellow highlight.

Reviewer #1:

This study could be published in this Journal after some issues revised.

Response: We are very grateful to the reviewer for his comments that helped in improving the revised version of this manuscript.

C1: Readers are not know the HCl leaching process from the current title.

R1: The title has been changed to include the HCl.

C2: The description of leaching condition in Abstract are too tediously long.

R2: The abstract has been revised as suggested.

C3: Al content determination with ICP-OES should add to Materials and characterization but not in the leaching process part.

R3: The part has been moved to Materials and characterization as suggested.

C4: The mineral phases for Al element is corundum Al_2O_3 , why the reaction in the leaching process is $\text{Al}(\text{OH})_3$?

R4: We do appreciate the reviewer for the conscientious review. It was reported that Al_2O_3 cannot react with acid at normal temperature; only the solid-phase amorphous that is in the sludge precipitate can be leached out by acidifying the sludge (Cheng et al., 2012). On the other hand, $\text{Al}(\text{OH})_3$ (amorphous) is the most soluble form of aluminum found in soils; while, Aluminum (Al) is the major element of the waste sludge in the form of $\text{Al}(\text{OH})_3$ (Brown and Associates, 1980). In addition, Al_2O_3 in the form of aluminum hydroxide-containing sludge is highly soluble in both acidic and basic solutions (Sposito, 1996).

Cheng W-P, Fu C-H, Chen P-H, Yu R-F (2012) Dynamics of aluminum leaching from water purification sludge. *J Hazard Mater* 217-218: 149-155.

Brown K.W. and Associates, Hazardous Waste Land Treatment, College Station, Texas, 1980.

Sposito G., *The Environmental Chemistry of Aluminum*, 2nd ed., Boca Raton, Florida, 1996. CRC Press, 1996

C5: The composition of Al is 32.78%, this means 32.78% is composed of corundum and kaolinite at the same time, whether the Al element both in corundum and kaolinite could be leached or not?

R5: We do thank the reviewer for the comment; the clarification for this regard has been described in the previous response. In addition, the FTIR results also confirmed the component of kaolinite as shown in Table 1.

C6: The format of Reference should be unified in whole manuscript.

R6: The format of reference has been now unified in the revised manuscript.

C7: In literature data validation part, there is little research meaning by activation energy comparison without a convincing linear fit coefficient as well as different raw materials. Such as

a lower fit coefficient with a higher activation energy would led to a inaccurate conclusion. So you would better provide a table for activation energy and coefficient list to better comparison.

R7: Table for comparison of activation energy has been added in the revised manuscript. We do thank the reviewer for the comment that helped in improving the revised version of this manuscript.

C8: The research significance from the obtained kinetic results analysis is inadequate.

R8: The kinetic results analysis has been revised as suggested.

C9: You'd better learn from follow papers for kinetic results analyses and validation.
(1)<https://doi.org/10.1007/s11837-017-2692-0>;

(2) <https://doi.org/10.1016/j.jclepro.2019.119256>;

R9: The suggested references have been added in the revised manuscript. We do thank the reviewer for kind suggestion.

C10: The founding importance in conclusion is too simple.

R10: The conclusion has been modified as suggested.

C11: Some English term need to be further modified.

R11: The English has been checked by the competent person.

Reviewer #2:

The following are the comments or suggested corrections:

Response: We are very grateful to the reviewer for his comments that helped in improving the revised version of this manuscript.

C1: Abstract, line 26: should read "environmental problems"

R1: The words have been changed as suggested.

C2: pg 2, line 24: Should read "ion exchange"

R2: The words have been changed as suggested.

C3: pg 2 & 3, last and first line respectively: While this is true, HCl is very difficult to handle and very corrosive to stainless steel thus it requires special lined vessels or glass vessel when it is used for leaching. Thus, based on these factors its use is less preferred industrial as compared to sulphuric acid. On the other hand its also a more aggressive acid thus tends to have higher extraction efficiency compared to sulphuric acid. Thus all these factors need to be taken into account when considering acid selection.

R3: We do thank the reviewer for the comment and knowledge. We added the explanation into the revised manuscript with relevant literature.

C4: Results and discussion: Effect of acid concentration: Is there a significant difference between Al extraction at 2M and 4M? You may need to justify this with a statistical test. Based on the difference is there a justification to double acid concentration from 2 M to 4 M? In my view 2M acid concentration should have been used.

R4: We do thank the reviewer for the comment; we have added the statistical test for the concentration. It was observed that the range of concentration showed the significant effect.

C5: pg 7, line 34: Correct the part "solvent.(Raza et al., 2015)"

R5: The part was corrected. We do thank the reviewer for the conscientious finding.

C6: pg 7 & 8, line 59-61 & 1-5 respectively: Be specific on which process you are referring to. Also this part need rephrasing its not clear "It is reported that the chemical reaction controlled the kinetic process (Brantley et al., 2008); on the other hand, the kinetic model of product-layer diffusion was proven to fit the experimental data (Cheng et al., 2012)."

R6: The sentences have been rephrased in the revised manuscript.

C7: pg 9, line 22-24: Be more specific on what is meant by higher acid concentration? what is the lower limit for this. For the second stage $R^2 > 0.9$ for both chemical reaction and diffusion

control, are both not controlling the process? Since K_i is smaller is it not the rate limiting at this stage?

R7: We do thank the reviewer for the bright comment. The sentence has been revised. The higher concentration means $> 1M$. As rightfully suggested by the reviewer, K_i is smaller; it means that the diffusion controls the process; however, this can't be applied when the R^2 is <0.9 such as in the case of particle size and temperature effect. We have revised the manuscript to avoid misinterpretation. Again we do thank the reviewer for the conscientious review.

C8: The authors should also address what happens to the extracted Al and residual sludge after extraction. A paper of this nature must also demonstrate the suggested process is sustainable and derives value from a waste material without creating secondary pollution e.g. a toxic solid residual in order to be more suitable for this journal.

R8: The suggestion has been added in the revised manuscript at the last part before conclusion. We do thank the reviewer for great comment that helps in improving the quality of the manuscript.

[Click here to view linked References](#)

Aluminum leaching from water treatment sludge using hydrochloric acid and kinetic study

Agus Mirwan^a, Meilana Dharma Putra^{a*}, Jhy-Chern Liu^b, Susianto^c, Ali Altway^c, Renanto

Handogo^c

^aDepartment of Chemical Engineering, Faculty of Engineering, Lambung Mangkurat University, Banjarbaru 70714, Indonesia

^bDepartment of Chemical Engineering, National Taiwan University of Science and Technology, Taipei 106, Taiwan

^cDepartment of Chemical Engineering, Faculty of Industrial Technology, Institut Teknologi Sepuluh Nopember, Surabaya 60111, Indonesia

*Corresponding author: Email: mdputra@ulm.ac.id

Abstract

Water treatment sludge (WTS) is abundantly produced in the world; the waste contributes to the environmental problems. Therefore for WTS utilization, aluminum leaching was employed using hydrochloric acid in this study. Al leaching efficiency increased from 72% to 80% as hydrochloric acid concentration increased from 1M to 4M. Decreasing the particle size and increasing the temperature increased Al leaching efficiency. The proposed kinetic model revealed that the rate controlling step followed a series of two leaching mechanisms: initially controlled by product-layer diffusion and then by a chemically controlled reaction. For instance, at 70 °C, the initial stage is well fitted by product-layer diffusion ($R^2=0.87$) compared to $R^2=0.60$ for chemical reaction; while for the second stage $R^2=0.95$ was observed via chemical reaction compared to $R^2=0.74$ for product-layer diffusion. The activation energies in these two stages were 9.58 kJ/mol and 10.73 kJ/mol, respectively. The proposed model was well validated by using data from literature and thus will be useful for other applications of leaching and extraction processes.

Keywords: Waste, environmental problem, mechanism, model, chemical surface, diffusion, removal.

Introduction

Water treatment plants (WTP) involves a coagulation process by using aluminum salts, e.g., polyaluminum chloride or aluminum sulphate, that cause hydrolyzation in raw water to form aluminum hydroxide precipitates. This process results in the production of voluminous sludge known as WTS. Globally, the total production of WTS can reach 10,000 tons/day (Okuda et al. 2014). Being a non-toxic material, most of WTS is disposed for land application and landfilling (Babatunde & Zhao 2007; Nair & Ahammed 2015). On the other hand, recycling WTS should be avoided because of organic solubilization (Meng et al. 2018). In recent years, many studies have been focused on Al recovery from WTS by leaching processes for possible reuse (Haynes & Zhou 2015). Various methods such as acidification, basification, ion exchange, and membranes have been employed for the recovery (Ahmad et al. 2016b; Nair & Ahammed 2014; Ooi et al. 2018). Ahmad et al. (2016a) indicated that Al recovery might not be simple, even though laboratory and plant scale tests have showed that it is feasible and economical. Intensive research in acid leaching has been under development due to the efficient and low-cost process compared to others methods (Jiménez et al. 2007). Thus, further exploration of means to recover Al from WTS is deemed important.

Acids have been examined for Al leaching from WTS. The commonly used sulfuric acid (H_2SO_4) is one of the effective solvents to extract aluminum. Jiménez et al (Xu et al. 2009) reported that sulfuric acid could extract 70% of Al within 30 min at pH=2. The leaching efficiency of Al reached 83.6% using 1M H_2SO_4 within 30 min (Cui et al. 2015). Okuda et al. (Okuda et al. 2014) reported that more than 80% of Al was extracted within 2 h using H_2SO_4 at pH=1 under ambient temperature. However, due to its toxicity, sulfuric acid can bring some negative effects on environment and could lead to self-inhibition effect due to the new interaction during leaching process (Seidel & Zimmels 1998). The use of hydrochloric acid as a solvent in leaching is gaining grounds in research due to its lower acute toxicity compared to sulfuric acid (Hagen & Järnberg 2009). The leaching process

using HCl continues to improve to attain high efficiency. It was reported that the sulfuric acid and hydrochloric acid lead to corrosion effect in vessel; however, corrosion rate for both acid can be significantly reduced by using hard chrome plating (Ajeel et al. 2012). The leaching rate of Al from secondary aluminum dross at 75 °C for 600 min was about 7-18% (Yang et al. 2019a). On the other hand, the extraction efficiency of 94% was obtained from raw kaolin using HCl at 70 °C for 6 h; however, sodium chloride was also formed (Bhattacharyya & Behera 2017). The leaching efficiency using HCl varied depending on the raw materials and process condition such as temperature, time, etc.

Kinetic models are important tools to describe the mechanism of the leaching process. Some studies have used the shrinking core model to define the dissolution kinetics of aluminum from fly ash and kaolin (Cheng et al. 2012; Tang et al. 2010). A kinetic process of aluminum leaching is described via diffusion or chemical reaction. However, the exact rate limiting step for the kinetics is still undetermined for a general aluminum leaching process. Hence, the kinetics should be studied in detail to explore the role of the rate limiting step in the system.

Many studies have been devoted to assess the optimal conditions for acid leaching of Al from the WTS. However, most of them were focused on the use of H₂SO₄ (Cheng et al. 2016; Cheng et al. 2012; Keeley et al. 2016). Some leaching processes have been also carried out from raw materials using HCl; thus, the Al leaching process from WTS using HCl would be investigated thoroughly in this study. On the other hand, the information on the mechanism of leaching process seems insufficient. In the present study, the effects of some main parameters, such as acid concentration, particle size, and temperature on Al leaching have been investigated using HCl. The kinetics of Al leaching from WTS has been further studied using the shrinking core (SC) model. A modified kinetic model has also been developed in this study.

Material and methods

Materials and characterization

WTS was collected from the water treatment plant in Banjarmasin, South Kalimantan, Indonesia. It was washed and dried under direct sunlight for 48 h. The material was further crushed, screened, and separated into the size fractions of 70-120 mesh (0.210-0.125 mm), 120-200 mesh (0.125-0.074 mm), and 200-325 mesh (0.074-0.044 mm). Samples were then stored in plastic bottles for experiments without any further treatment.

WTS was characterized by X-ray diffractometer (XRD, Philips X-pert powder model, Netherlands) using powder diffraction database file-2 (PDF-2). The results showed the major mineral phases of kaolinite ($\text{Al}_2\text{Si}_2\text{O}_5(\text{OH})_4$), quartz (SiO_2), hematite (Fe_2O_3), and corundum (Al_2O_3) (Fig. 1). The surface functional groups of each constituent solids were characterized using Fourier Transformation Infrared Spectroscopy (FTIR, Shimadzu, Japan), and the results of which are shown in Table 1. Flake structure of WTS was found when being analyzed by scanning electron microscopy equipped with X-ray microanalysis (SEM-EDX, SEM EVO MA 10, Germany). The results showed the presence of dominant elements, namely Al, Si, Fe (color difference) with the composition of 32.78%, 49.15%, and 18.07%, respectively as shown in Fig. 2. Similar observation of WTS sample was also shown in other literature containing Fe_2O_3 , SiO_2 and Al_2O_3 (Ahmad et al. 2016b; Cheng et al. 2012).

Aluminum content in the samples was determined by using the inductively coupled plasmacluster optical emission spectrometer (ICP-OES, 9060-D Teledyne Leeman Labs, USA). Each analysis was triplicated and the average value was reported. The Al leaching ratio (x) can be calculated as:

$$x = X/X_0 \quad (1)$$

where X_0 denotes total Al content and X refers to the amount of Al leached (Yang et al. 2019b).

Leaching process

The leaching process was conducted in a 500-mL Pyrex reactor with a thermostat water bath (Fig. 3). Mixing was achieved by using a magnetic stirrer at 300 rpm. Al leaching from WTS was carried out by placing 5 g of WTS into 250 ml of HCl (37%, Sigma-Aldrich) solution at various concentrations (1, 2, 4, and 6 M). WTS samples with different particle size (70-120, 120-200, and 200-325 mesh) were used in experiments conducted at different reaction temperatures (30, 50, 70, and 90 °C). Total reaction time was controlled at 60 min. At selected time interval, samples were collected and then filtered by a syringe for the analysis of Al content.

Shrinking core (SC) model

The shrinking core (SC) model describes the kinetic characteristics of non-catalytic, heterogeneous, solid-liquid reactions consisting of three processes: film diffusion, product-layer diffusion, and surface chemical reaction (Keeley et al. 2016). In this study, only product-layer diffusion and surface chemical reaction were considered due to the fast process of film diffusion. The kinetic equation for a leaching process controlled by a surface chemical reaction is presented as follows:

$$\frac{t}{\tau_c} = 1 - (1 - x)^{1/3} \quad (2)$$

If the leaching process is controlled by the diffusion through product-layer, the kinetic equation is described as follows:

$$\frac{t}{\tau_i} = 1 - 3(1 - x)^{2/3} + 2(1 - x) \quad (3)$$

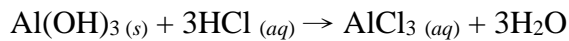
where τ_c is the complete leaching time for process controlled by surface chemical reaction, $\tau_c = \rho_B R / b M_w k_c C_A$, τ_i is the complete leaching time for a process controlled by product-layer diffusion, $\tau_i = \rho_B R^2 / 6 b M_w D_e C_A$, x is the fraction of Al leached out, t is the reaction time, ρ_B is the solid density, R is the radius of initial particle, b is the stoichiometric

coefficient, M_w is the molecular weight (g/mol), k_c is the factor of mass transfer, C_A is the hydrochloric acid concentration, and D_e is the coefficient of product-layer diffusion.

Results and discussion

Effect of acid concentration

Figure 4 shows the amount of extracted aluminum with time at the temperature of 90 °C, particle size of 200-325 mesh and various concentrations. Aluminum (Al) is the major element of the WTS in the form of $\text{Al}(\text{OH})_3$ and the solubility is affected by pH. The main reaction in the leaching process is shown as follows:



As shown in Figure 4, the efficiency of Al leaching increased from 72% to 80% as HCl concentration changed from 1M to 4M. Although at 6M of HCl, it slightly decreased to 78% indicating the key role the pH plays in Al leaching from WTS. This acidification process (with low pH) is more convenient and efficient compared to the basification process (Baba et al. 2009). As reported by Cheng et al. (Cheng et al. 2012), metal such as Al is easily dissolved at $\text{pH} < 2.5$. On the other hand, the solubility of aluminum chloride (AlCl_3) decreases with increasing HCl concentration at concentration higher than 5M (Seidel & Zimmels 1998); this notion is similarly in accordance with our finding here ($>4\text{M}$). It was plausible due to the formation of other metal-chloride (Raza et al. 2015). When AlCl_3 is saturated in the reaction system, dissolution and precipitation of $\text{Al}(\text{OH})_3$ might reach a dynamic equilibrium. The HCl concentration of 4 M was therefore chosen for subsequent experiments.

Effect of particle size and temperature

Fig. 5 shows the amount of extracted aluminum with time at the concentration of 4M, at the temperature of 90 °C and with various particle sizes. The efficiency of Al leaching increased as particle size decreased. It indicated that smaller particle sizes lead to faster

leaching process. It could be reasonably related to the acceleration of the mass transfer process (Brantley et al. 2008) thus minimizing the effect of internal diffusion. Also, smaller particle size increased the surface area; thus, it consequently resulted in larger contact between particle and solvent (Adekola et al. 2017). Fig. 6 shows the amount of extracted aluminum with time at acid concentration of 4M, particle size of 200-325 mesh and various temperatures. The Al leaching efficiency increased with temperature and an optimum process was obtained at 4M and 90°C for 60 min with the efficiency of 82%. Increasing the temperature from 70 °C to 90 °C significantly increased the Al leaching efficiency (from 67% to 82%) compared to the increasing temperature from 50 °C to 70 °C (62% to 67%) and from 30 °C to 50 °C (58% to 62%). This revealed that the temperature range 70-90 °C is crucial for the leaching process; this situation will plausibly continue at a higher temperature. Significantly higher leaching efficiency (>70%) was observed by increasing temperature at above 70 °C (Raza et al. 2015; Shalchian et al. 2018). On the other hand, a leaching efficiency of about 99% was obtained at 70 °C using succinic acid, an expensive solvent (Raza et al. 2015). The different results could be attributed to differences in used solvents and extracted components.

Statistical Analysis

The resulted data were also affirmed by conducting statistical test using Anova analysis. Significant effect of HCl concentration on the Al leaching ratio ($p=0.0007$) was obtained. Significant effect were also obtained in each range of concentration between 1M and 2M ($p=0.0474$), 2M and 4M ($p=0.0343$); while insignificant effect was observed in the concentration range of 4M and 6M ($p=0.2924$) due to the drop of Al leaching ratio at higher concentration.

For size particle effect, significant effect was also achieved at total range ($p=1.57 \times 10^{-7}$) as well as in each range between +70/-120 and +120/-200 ($p=0.0027$) and +120/-200 and +200/-325 ($p=6.84 \times 10^{-5}$). The statistical results also revealed the significant effect of

temperature on Al leaching ratio at total temperature range ($p=1.29 \times 10^{-8}$) and the range of 30 °C and 50 °C ($p=0.0124$), 50 °C and 70 °C ($p=0.0284$) and 70 °C and 90 °C ($p=0.0005$).

Kinetic study and mechanism

Kinetic study is important to elucidate the various processes in the system. The shrinking core model used in the study includes the product-layer diffusion and chemical reaction. The kinetic model using shrinking model has been applied to fit the experimental data. The correlation coefficient values (R^2) for product-layer diffusion and chemical reaction were 0.75-0.84 and 0.57-0.67, respectively for all experimental data of concentration, particle size and temperature. Although the fitting results of the kinetic model and experimental were unsatisfactory, the product-layer diffusion as a rate limiting step was found more appropriate for the system. It was reported that for the process controlled by surface chemical reaction a plot of $1 - (1 - x)^{1/3}$ should be a straight line with slope of $1/\tau_c$ and for the process controlled by the product-layer diffusion, a plot of $1 - 3(1 - x)^{2/3} + 2(1 - x)$ should be a straight line with slope of $1/\tau_i$ (Tian et al. 2018; Yang et al. 2020; Yang et al. 2019b). However, the low values of R^2 obtained here were, probably, because both the exponential rate and linear rate were observed in the leaching process thereby it couldn't be tackled by the shrinking model. On other hand, the chemical reaction controlled the kinetic process (Brantley et al. 2008); contrarily, the kinetic model of product-layer diffusion was proven to fit the experimental data (Cheng et al. 2012). Those different results of the rate of limiting step were due to the used solvent, the extracted component, the raw materials and the temperature affecting the kinetic process (Brantley et al. 2008). In fact, the kinetic model in those literatures was only evaluated during the exponential rate of leaching; while, the subsequent leaching rate cannot be ignored as the increase in the leaching efficiency was observed at about 14-20% (Cui et al. 2015). On the other hand, researchers revealed that the experimental data did not conform to both kinetic models of chemical reaction or product-

layer diffusion (Yang et al. 2019b); they concluded that the mathematical approach failed to explain the dynamic situation due to finer particle size, grain shape, and reactant activity (Shalchian et al. 2018). In fact, they had both stages of exponential and linear leaching process. Hence, their difficulty of interpretation can be clearly described in this study later. In the next discussion, we will clearly explore the effect of product-layer diffusion and chemical reaction as rate limiting step on both proposed regions of leaching rate as shown in Fig. 7. The exponential rate ($t < 20$ min) is used in the first-stage and the linear rate ($t > 20$ min) in the second-stage. The mechanisms of leaching process were further assessed separately for each stage and the integration limits of the corresponding differential mass balance equation consequently changed. For the first-stage process, the equations (2) and (3) were applied for surface chemical reaction and product-layer diffusion, respectively. For the second-stage, the equation based on surface chemical reaction as rate of limiting step led to:

$$\frac{t-t_1}{\tau_c} = 1 - \left(\frac{1-x}{1-x_1} \right)^{1/3} \quad (4)$$

$$\tau_c = \rho_B R (1-x_1)^{1/3} / b M_w k_c C_A \quad (5)$$

where t is the total reaction time, t_1 is the first-stage reaction time, x is the total Al leached out, and x_1 is the Al leached out in the first stage. Both t_1 and x_1 values were obtained from experimental data as the initial conditions. The kinetic equation for the rate limiting step based on product-layer diffusion can be further expressed as follows:

$$\frac{t-t_1}{\tau_i} = 1 - 3 \left(\frac{1-x}{1-x_1} \right)^{2/3} + 2 \frac{(1-x)}{(1-x_1)} \quad (6)$$

$$\tau_i = \rho_B R^2 (1-x_1)^{2/3} / 6 b M_w D_e C_A \quad (7)$$

Table 2 shows the constants of leaching rate in the first and second stages of various HCl concentrations. It was clear that in the first stage, the leaching process of Al was controlled by the product-layer diffusion since the correlation coefficient value (R^2) for the rate constant of product-layer diffusion (K_i) was higher than that of surface chemical reaction

(K_c). For the second-stage process, it was found that the R^2 value of K_c was slightly higher than that of K_i especially at a higher acid concentration ($> 1M$). This finding implies that Al leaching could be appropriately controlled by chemical reaction. A similar finding was observed at various particle sizes for both first and second stages as presented in Table 3; furthermore, the R^2 value of K_i for second stage was very low hence the diffusion could not be justified to control the process. This revealed that the diffusion process was dominant at the beginning of process for short time. Hence, at the second stage, after the particle experienced the shrinkage by time, the diffusion rate would be very fast, and the chemical reaction subsequently became the rate limiting step. Furthermore, the leaching rate process depends more on the particle size compared to acid concentration as the increase in rate constants became twofold when the particle size was reduced from 120-200 to 200-325 mesh.

The division of two stages was also clearly observed at the temperature effect with significantly different values of R^2 for both product-layer diffusion and chemical reaction as shown in Table 4. It was reported that at a lower temperature the chemical reaction control was more appropriate; conversely at higher temperature, the leaching process was controlled by product-layer diffusion [10]. In this study, the R^2 values were similar for both, the chemical reaction and layer diffusion, at 30 °C in the first stage; the kinetic model of product-layer diffusion fitted well at a higher temperature. In the second stage, the chemical reaction was dominantly observed to be the rate limiting step. It indicated that temperature contributed significantly to the leaching process; in as much as the constants rate can be related to the exponential function of temperature by Arrhenius equation: $K = A e^{\left(-\frac{E_a}{RT}\right)}$. A is the pre-exponential factor; E_a is the activation energy ($\text{kJ}\cdot\text{mol}^{-1}$); R is the gas constant, $8.314 \times 10^{-3} \text{ kJ}\cdot\text{mol}^{-1}\cdot\text{K}^{-1}$, and T is the temperature (K).

The activation energies obtained in this work for the first stage and second stage were 9.58 kJ/mol and 10.73 kJ/mol, respectively. Compared with other results (Table 5), the value

of activation energy obtained in the current study was lower than that in those literatures (Cheng et al. 2012; Cui et al. 2015; Tang et al. 2010). It implies that the leaching process of aluminum from WTS using HCl was easier. It was reported (Tang et al. 2010) that dissolution kinetics controlled by surface chemical reaction resulted in a higher activation energy (>42 kJ/mol), whereas a lower activation energy (<20 kJ/mol) suggested that product-layer diffusion is the rate controlling step (Cui et al. 2015). The value of activation energy for first stage in this work was in agreement to those reported; however, the activation energy value in second stage was out of range for chemical reaction as the rate limiting step. It is possible since they only evaluated the leaching process in the first stage; while a further way of the second stage was also observed in this work as the continual process. Hence, due to shrinkage phenomenon that diminishes the diffusion barrier, the chemically controlled process in the second stage would be more plausible to take place thus implying the low activation energy.

To prove the involvement of a series-kinetic control process of chemical reaction and product-layer diffusion, a combined kinetic model was proposed. The combined kinetic model is described as follows:

$$K_p t = \alpha \left[1 - (1-x)^{1/3} \right] + (1-\alpha) \left[1 - 3(1-x)^{2/3} + 2(1-x) \right] \quad (8)$$

$$K_{pm} (t-t_1) = \alpha \left[1 - 3 \left(\frac{1-x}{1-x_1} \right)^{2/3} + 2 \frac{(1-x)}{(1-x_1)} \right] + (1-\alpha) \left[1 - \left(\frac{1-x}{1-x_1} \right)^{1/3} \right] \quad (9)$$

$$\alpha = \frac{K_i}{K_c} \quad (10)$$

K_p is the rate constant of the combined kinetic model. Equation 8 and 9 were applied for the first and second stage process, respectively. α is the ratio of K_i (coefficient for diffusion rate) to K_c (coefficient for chemical reaction rate). The higher value of α implies chemical reaction rate is controlling. The value of α is in the range of 0-1.

Figure 8a and 8b show the plot of the combined kinetic model for first and second stages at the temperature of 70 °C, respectively. The figures for other temperatures (not presented here) show similar trends as shown in Figure 8. In Figure 8a, the lower value of α led to higher value of R^2 ; it means that the product-layer diffusion controlled the process rate. This finding thus confirms the previous conclusion that in the first stage the leaching process was predominantly controlled by product-layer diffusion. In the second stage, the kinetic model with the high value of α fitted well the data as indicated by high value of R^2 . Hence, the leaching mechanism was mainly affected by a chemical reaction process. The proposed model was validated by using data from literature (Yang et al. 2019b), where the aluminum removal from diamond wire saw powder using hydrochloric acid 2 M at 60 °C was carried out. As shown in Fig. 9, good correlation fittings in the first stage ($R^2=0.92$) and the second stage ($R^2=0.98$) that describes the product-layer controlled diffusion and the chemical reaction controlled, respectively were obtained. This finding obviously disproves the previous conclusion (Yang et al. 2019b) regarding the failed mathematical approach at higher temperature ($R^2=0.43-0.70$) due to finer particle. This again confirms the previous finding using the separated model. Thus, the new combined kinetic model based on the general shrinkage core model could be well proposed for the system of leaching or extraction process. Moreover, the proposed model can be applied in other applications such as dehydration reaction, hydration kinetic, hydrolysis process, pyrolysis process etc. to predict the experimental data as the rate of shrinkage was shown by exponential and linear curves (Farsi et al. 2019; Huang et al. 2018; Lan et al. 2015; Zhang et al. 2019).

For future step, the Al produced through leaching process could be precipitated using a base to form $AlPO_4$; this could be applied in phosphate industry or fertilizer in agriculture (Muisa et al. 2020; Pradel et al. 2020). On other hand, the Alum sludge can be used as absorbent for heavy metals (Dassanayake et al. 2015). After extraction process using HCl, the non-toxic organic materials remains in the sludge (Smith et al. 2009). This residual sludge

essentially provides geopolymeric feedstock (Gomes et al. 2019). Furthermore, the residue becomes secondary raw material for the ceramic and glass industries (Zichella et al. 2020).

Conclusions

The kinetics of Al leaching from WTS was investigated using HCl. Leaching experiments were performed with four different acid concentrations, three different particle sizes, and four different temperatures. Al leaching efficiency increased as HCl concentration changed from 1M to 4M. However, the limited solubility of $AlCl_3$ at higher concentration (6M) hindered the leaching reaction. In addition, both smaller particle size and higher temperature resulted in higher leaching efficiency. The proposed kinetic model revealed the importance of the dividing the leaching process into two stages. The first stage was more suitable for the kinetic of product-layer diffusion; while the second stage was controlled by the chemical reaction. The proposed model that has been well validated with the literature data showed the prominence to be developed for wide application process using shrinking model.

Acknowledgment

This study was financially supported by the Directorate General of Higher Education, Ministry of Education and Culture, Republic of Indonesia. The first author is grateful for Sandwich-Like Program from the Directorate General of Science & Technology Resource and Higher Education (DGSTRHE), Republic of Indonesia in collaboration with National Taiwan University of Science and Technology (Taiwan Tech) Taiwan.

Conflict of interest

The authors declare that there is no conflict of interest.

References

- Adekola FA, Baba AA, Girigisu S (2017) Dissolution kinetics of kaolin mineral in acidic media for predicting optimal condition for alum production. *J Cent S Univ* 24(2): 318-324.
- Ahmad T, Ahmad K, Alam M (2016a) Characterization of water treatment plant's sludge and its safe disposal options. *Procedia Env Sci* 35: 950-955.

- Ahmad T, Ahmad K, Alam M (2016b) Sustainable management of water treatment sludge through 3'R' concept. *J Cleaner Prod* 124: 1-13.
- Ajeel SA, Waadulah HM, Sultan DA (2012) Effects of H₂SO₄ and HCl concentration on the corrosion resistance of protected low carbon steel. *Al-Rafdain Eng J* 20(6): 70-76.
- Baba AA, Adekola AF, Bale RB (2009) Development of a combined pyro- and hydro-metallurgical route to treat spent zinc-carbon batteries. *J Hazard Mater* 171(1): 838-844.
- Babatunde AO, Zhao YQ (2007) Constructive approaches toward water treatment works sludge management: An international review of beneficial reuses. *Crit Rev Environ Sci Technol* 37(2): 129-164.
- Bhattacharyya S, Behera PS (2017) Synthesis and characterization of nano-sized α -alumina powder from kaolin by acid leaching process. *Appl Clay Sci* 146: 286-290.
- Brantley S, Kubicki J, White A. 2008. *Kinetics of Water-Rock Interaction*. Springer-Verlag, New York.
- Cheng W-P, Chen P-H, Yu R-F, Ho W-N (2016) Treating ammonium-rich wastewater with sludge from water treatment plant to produce ammonium alum. *Sust Environ Res* 26(2): 63-69.
- Cheng W-P, Fu C-H, Chen P-H, Yu R-F (2012) Dynamics of aluminum leaching from water purification sludge. *J Hazard Mater* 217-218: 149-155.
- Cui L, Guo Y, Wang X, Du Z, Cheng F (2015) Dissolution kinetics of aluminum and iron from coal mining waste by hydrochloric acid. *Chin J Chem Eng* 23(3): 590-596.
- Dassanayake KB, Jayasinghe GY, Surapaneni A, Hetherington C (2015) A review on alum sludge reuse with special reference to agricultural applications and future challenges. *Waste Manage (Oxford)* 38: 321-335.
- Farsi A, Kayhan Ö, Zamfirescu C, Dincer I, Naterer GF (2019) Kinetic and hydrodynamic analyses of chemically reacting gas-particle flow in cupric chloride hydrolysis for the Cu-Cl cycle. *Int J Hydrogen Energy* 44(49): 26783-26793.
- Gomes SDC, Zhou JL, Li W, Long G (2019) Progress in manufacture and properties of construction materials incorporating water treatment sludge: A review. *Resour Conserv Recy* 145: 148-159.
- Hagen Mvd, Järnberg J. 2009. The Nordic expert group for criteria documentation of health risks from chemicals. in: *Arbete och Hälsa*, Vol. 43, Göteborgs Universitet. Göteborg, pp. 1-123.
- Haynes RJ, Zhou Y-F (2015) Use of alum water treatment sludge to stabilize C and immobilize P and metals in composts. *Environ Sci Pollut Res* 22(18): 13903-13914.
- Huang Y, Zhang M, Lyu J, Yang H, Liu Q (2018) Modeling study on effects of intraparticle mass transfer and secondary reactions on oil shale pyrolysis. *Fuel* 221: 240-248.
- Jiménez B, Martínez M, Vaca M (2007) Alum recovery and wastewater sludge stabilization with sulfuric acid. *Water Sci Technol* 56(8): 133-141.
- Keeley J, Jarvis P, Smith AD, Judd SJ (2016) Coagulant recovery and reuse for drinking water treatment. *Water Res* 88: 502-509.
- Lan S, Zondag H, van Steenhoven A, Rindt C (2015) Kinetic study of the dehydration reaction of lithium sulfate monohydrate crystals using microscopy and modeling. *Thermochim Acta* 621: 44-55.
- Meng Z, Zhou Z, Zheng D, Liu L, Dong J, Yang Y, Li X, Zhang T (2018) Optimizing dewaterability of drinking water treatment sludge by ultrasound treatment: Correlations to sludge physicochemical properties. *Ultrason Sonochem* 45: 95-105.
- Muisa N, Nhapi I, Ruziwa W, Manyuchi MM (2020) Utilization of alum sludge as adsorbent for phosphorus removal in municipal wastewater: A review. *J Water Process Eng* 35: 101187.
- Nair AT, Ahammed MM (2014) Coagulant recovery from water treatment plant sludge and reuse in post-treatment of UASB reactor effluent treating municipal wastewater. *Environ Sci Pollut Res* 21(17): 10407-10418.
- Nair AT, Ahammed MM (2015) The reuse of water treatment sludge as a coagulant for post-treatment of UASB reactor treating urban wastewater. *J Cleaner Prod* 96: 272-281.

- Okuda T, Nishijima W, Sugimoto M, Saka N, Nakai S, Tanabe K, Ito J, Takenaka K, Okada M (2014) Removal of coagulant aluminum from water treatment residuals by acid. *Water Res* 60: 75-81.
- Ooi TY, Yong EL, Din MFM, Rezania S, Aminudin E, Chelliapan S, Abdul Rahman A, Park J (2018) Optimization of aluminium recovery from water treatment sludge using Response Surface Methodology. *J Environ Manage* 228: 13-19.
- Pradel M, Lippi M, Daumer M-L, Aissani L (2020) Environmental performances of production and land application of sludge-based phosphate fertilizers—a life cycle assessment case study. *Environ Sci Pollut Res* 27(2): 2054-2070.
- Raza N, Zafar ZI, Najam ul H, Kumar RV (2015) Leaching of natural magnesite ore in succinic acid solutions. *Int J Miner Process* 139: 25-30.
- Seidel A, Zimmels Y (1998) Mechanism and kinetics of aluminum and iron leaching from coal fly ash by sulfuric acid. *Chem Eng Sci* 53(22): 3835-3852.
- Shalchian H, Khaki JV, Babakhani A, Michelis ID, Veglio F, Parizi MT (2018) An enhanced dissolution rate of molybdenite and variable activation energy. *Hydrometallurgy* 175: 52-63.
- Smith KM, Fowler GD, Pullket S, Graham NJD (2009) Sewage sludge-based adsorbents: A review of their production, properties and use in water treatment applications. *Water Res* 43(10): 2569-2594.
- Tang A, Su L, Li C, Wei W (2010) Effect of mechanical activation on acid-leaching of kaolin residue. *Appl Clay Sci* 48(3): 296-299.
- Tian C, Lu H, Wei K, Ma W, Xie K, Wu J, Lei Y, Yang B, Morita K (2018) Effect of CH₃COOH on hydrometallurgical purification of metallurgical-grade silicon using HCl-HF leaching. *JOM J Miner Met Mater Soc* 70(4): 527-532.
- Xu GR, Yan ZC, Wang YC, Wang N (2009) Recycle of Alum recovered from water treatment sludge in chemically enhanced primary treatment. *J Hazard Mater* 161(2): 663-669.
- Yang Q, Li Q, Zhang G, Shi Q, Feng H (2019a) Investigation of leaching kinetics of aluminum extraction from secondary aluminum dross with use of hydrochloric acid. *Hydrometallurgy* 187: 158-167.
- Yang S, Wan X, Wei K, Ma W, Wang Z (2020) Dissolution and mineralization behavior of metallic impurity content in diamond wire saw silicon powder during acid leaching. *J Cleaner Prod* 248: 119256.
- Yang S, Wei K, Ma W, Xie K, Wu J, Lei Y (2019b) Kinetic mechanism of aluminum removal from diamond wire saw powder in HCl solution. *J Hazard Mater* 368: 1-9.
- Zhang Y, Bouillon C, Vlasopoulos N, Chen JJ (2019) Measuring and modeling hydration kinetics of well cements under elevated temperature and pressure using chemical shrinkage test method. *Cem Concr Res* 123: 105768.
- Zichella L, Dino GA, Bellopede R, Marini P, Padoan E, Passarella I (2020) Environmental impacts, management and potential recovery of residual sludge from the stone industry: The piedmont case. *Resour Policy* 65: 101562.

Table 1
Surface functional groups of FTIR of WTS

Infrared band (cm⁻¹)	Transmittance (%)	Functional group
3695.36	29.586	Al–O–H str (<i>kaolinite, illite</i>)
3620.14	26.456	Al–O–H (<i>kaolinite, illite, calcite</i>)
3448.49	24.903	H–O–H str (<i>kaolinite, illite</i>)
1634.56	37.454	H–O–H str (<i>illite, calcite</i>)
1104.17	16.372	Si–O str (<i>kaolinite, quartz</i>)
1031.85	8.981	Si–O–Si, Si–O str. (<i>kaolinite, illite</i>)
1007.74	10.150	Si–O str (<i>kaolinite, quartz</i>)
913.23	23.281	Al–O–H str (<i>kaolinite, illite, hematite</i>)
779.19	32.612	Si–O–Al str (<i>kaolinite, illite</i>)
694.33	29.459	Si–O str, Si–O–Al str (<i>quartz, kaolinite</i>)
536.17	15.456	Si–O str, Si–O–Al str (<i>kaolinite</i>)
468.67	13.958	Si–O str, Si–O–Fe str. (<i>quartz, kaolinite</i>)
426.24	21.678	Si–O str (<i>quartz</i>)

Table 2

Parameters of the kinetic model for Al leaching at different acid concentrations

Acid concentration (M)	First-stage of leaching process				Second-stage of leaching process			
	Rate constants		Correlation		Rate constants		Correlation	
	(min ⁻¹)		coefficient (R^2)		(min ⁻¹)		coefficient (R^2)	
	K_i	K_c	R^2_i	R^2_c	K_i	K_c	R^2_i	R^2_c
6	0.0212	0.0293	0.72	0.39	0.0006	0.0025	0.93	0.98
4	0.0190	0.0274	0.85	0.56	0.0006	0.0025	0.95	0.96
2	0.0153	0.0242	0.93	0.67	0.0007	0.0027	0.93	0.99
1	0.0113	0.0204	0.94	0.74	0.0008	0.003	0.96	0.92

Table 3

Parameters of the kinetic model for Al leaching at different particle sizes

Particle size (mesh)	First-stage of leaching process				Second-stage of leaching process			
	Rate constants (min^{-1})		Correlation coefficient (R^2)		Rate constants (min^{-1})		Correlation coefficient (R^2)	
	K_i	K_c	R^2_i	R^2_c	K_i	K_c	R^2_i	R^2_c
+200/- 325	0.0179	0.0265	0.89	0.57	0.0010	0.0033	0.80	0.98
+120/- 200	0.0164	0.0164	0.97	0.91	0.0003	0.0018	0.95	0.97
+70/- 120	0.0048	0.0125	0.93	0.96	0.0003	0.0018	0.93	0.97

Table 4

Parameters of the kinetic model for Al leaching at various temperatures

Temperature (°C)	First-stage of leaching process				Second-stage of leaching process			
	Rate constants (min ⁻¹)		Correlation coefficient (R^2)		Rate constants (min ⁻¹)		Correlation coefficient (R^2)	
	K_i	K_c	R^2_i	R^2_c	K_i	K_c	R^2_i	R^2_c
90	0.0179	0.0265	0.89	0.57	0.0010	0.0033	0.81	0.98
70	0.0128	0.0220	0.87	0.60	0.0002	0.0015	0.74	0.95
50	0.0100	0.0190	0.95	0.79	0.0002	0.0015	0.73	0.94
30	0.0068	0.0150	0.93	0.95	0.0002	0.0120	0.71	0.92

Table 5

Activation energy comparison of leaching process from literature

Time min	Temperature °C	Model	Rate- controlling step	Activation energy (kJ/mol)	Raw Material	Solvent	Ref.
0 – 160	60 – 100	One stage	Surface chemical reaction Diffusion process	43 24	Kaolin residue	Hydrochloric acid	(Tang et al. 2010)
0 – 60	10 – 70	One stage	Inert-layer diffusion	32.32	Water purification sludge	Sulfuric acid	(Cheng et al. 2012)
0 – 120	40 – 80 90 – 106	One- stage	Surface reaction Product- layer diffusion	57.65 12.33	Coal mining waste	Hydrochloric acid	(Cui et al. 2015)
0 – 15	30 – 90	First stage	Product- layer diffusion	9.58	Waste treatment sludge	Hydrochloric acid	Present study
15 – 60		Second stage	Surface chemical reaction	10.73			

Caption of Figures

Fig. 1. XRD pattern of WTS

Fig. 2. SEM pictures of WTS

Fig. 3. Leaching process and equipment

Fig. 4. Effect of acid concentration on Al leaching from WTS

Fig. 5. Effect of particle size on Al leaching from WTS

Fig. 6. Effect of temperatures on Al leaching from WTS

Fig. 7. Division of stages in Al leaching process

Fig. 8. Profile of the combined kinetic model against experimental data at 70°C for (a) first-stage leaching and (b) second-stage leaching

Fig. 9. Validated profile of the combined kinetic model against experimental data from literature for (a) first-stage leaching and (b) second-stage leaching

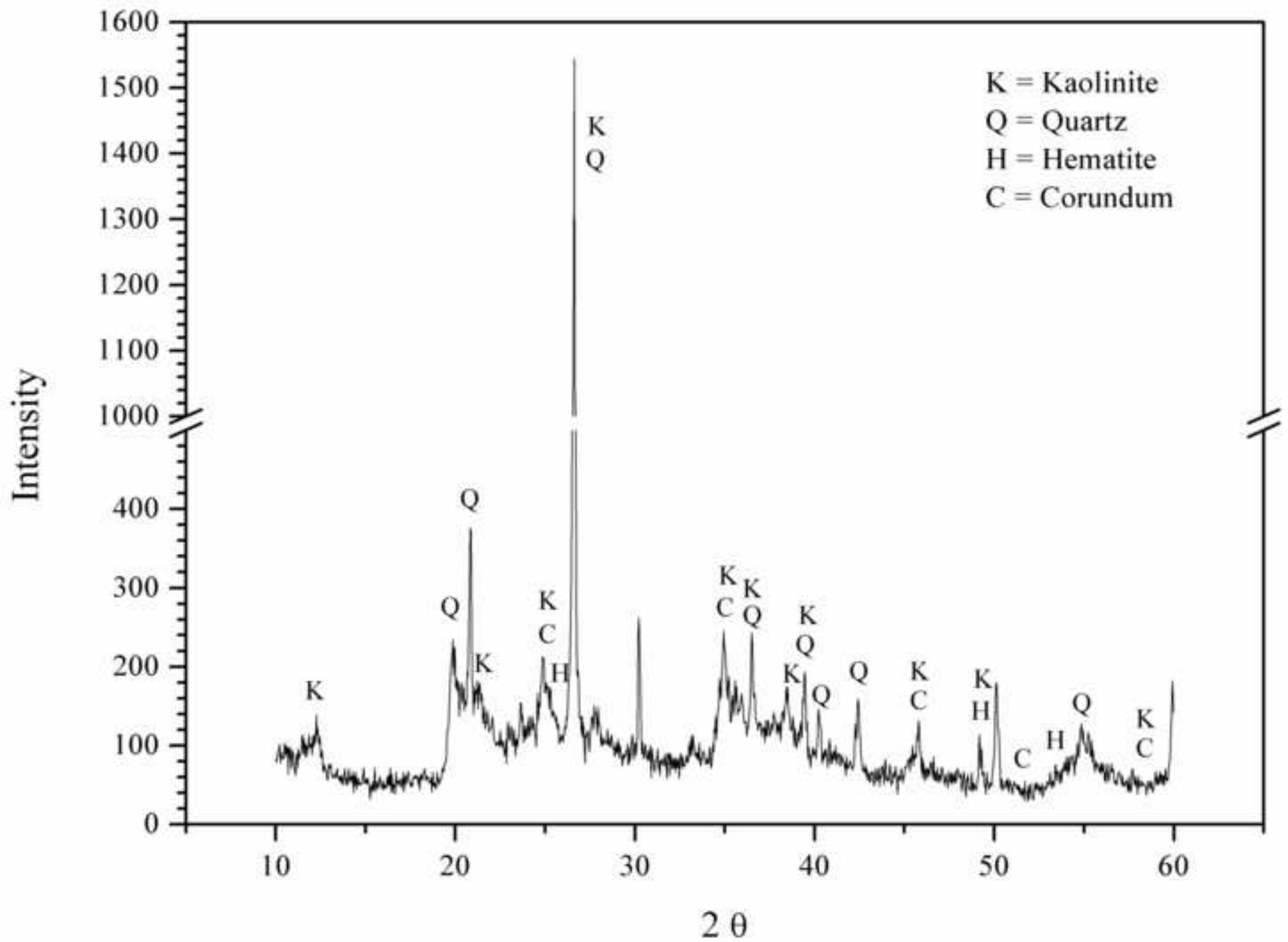
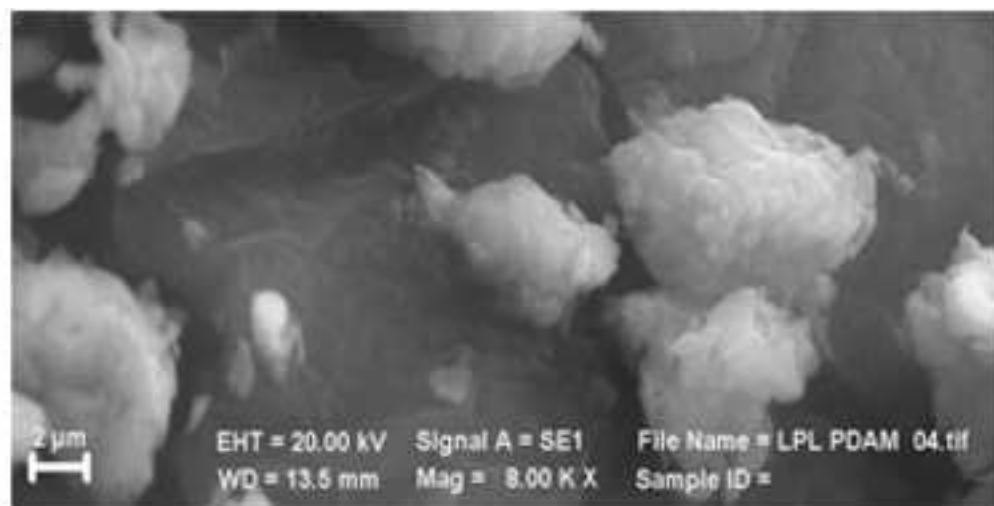
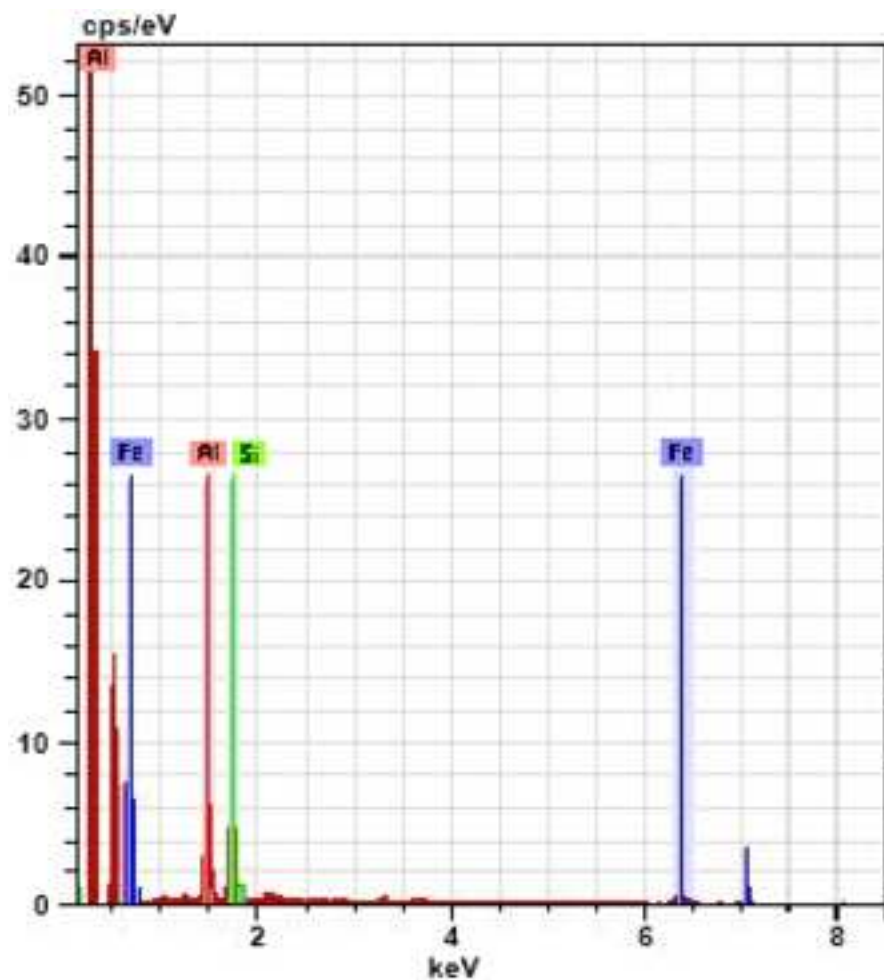
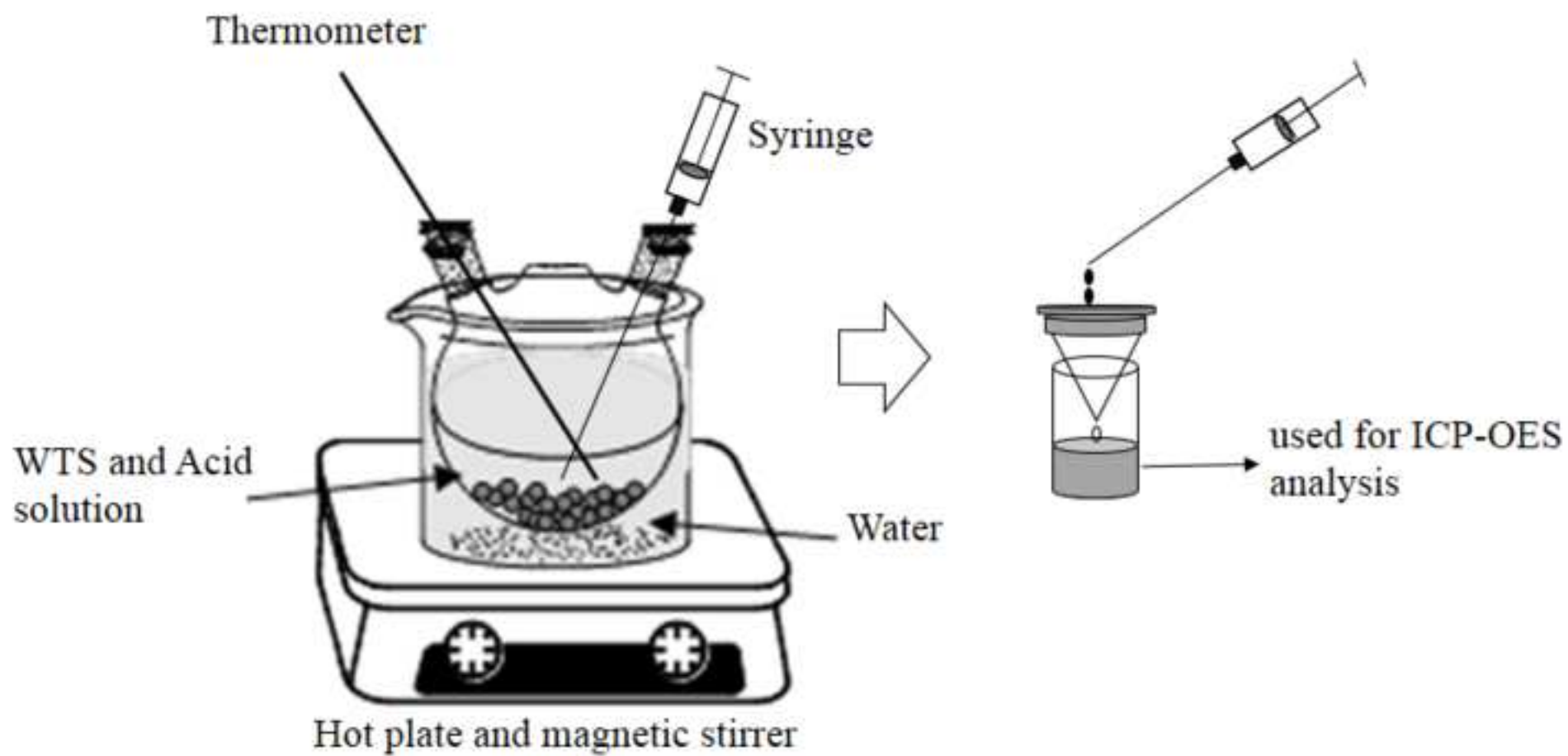
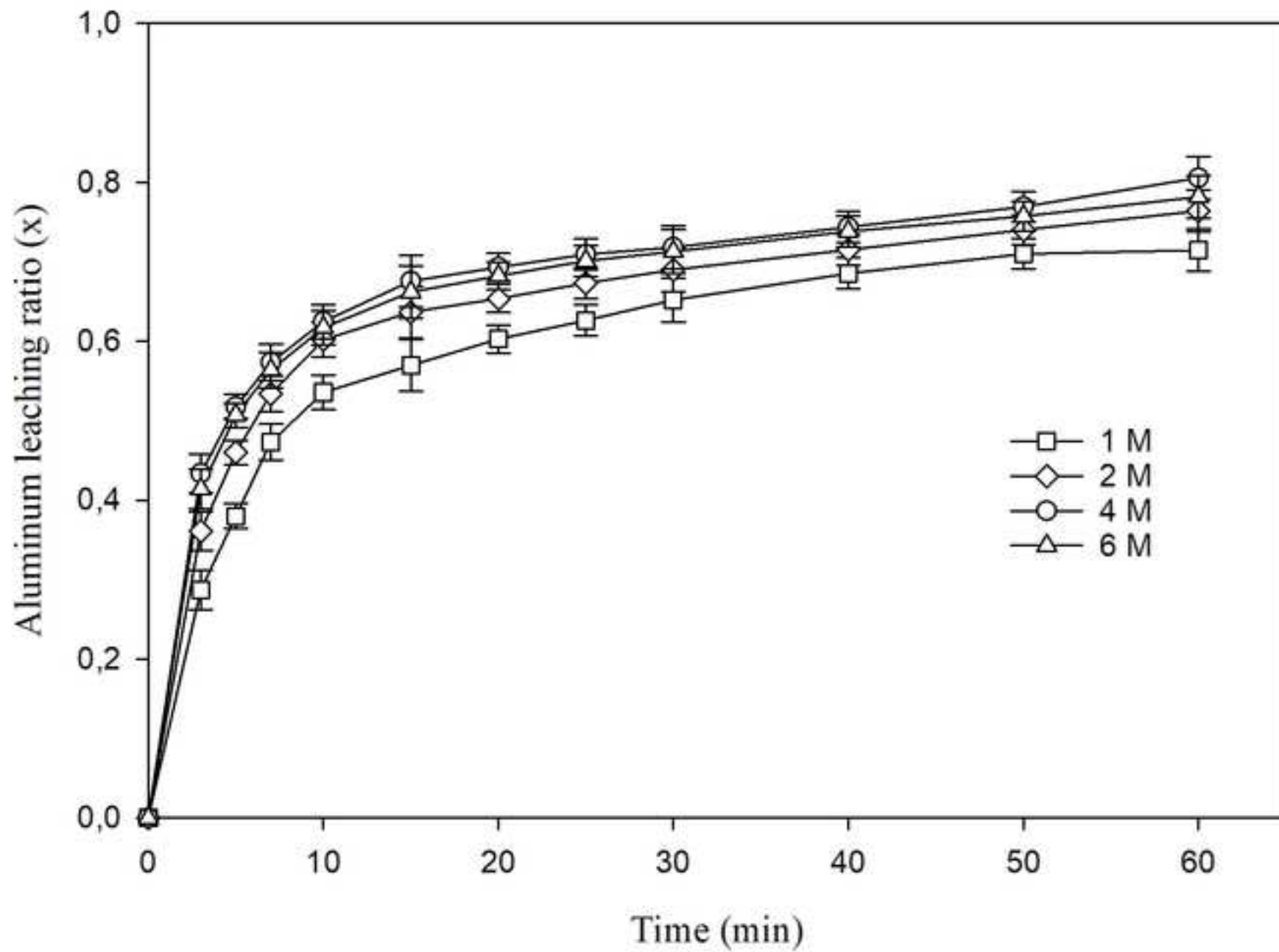


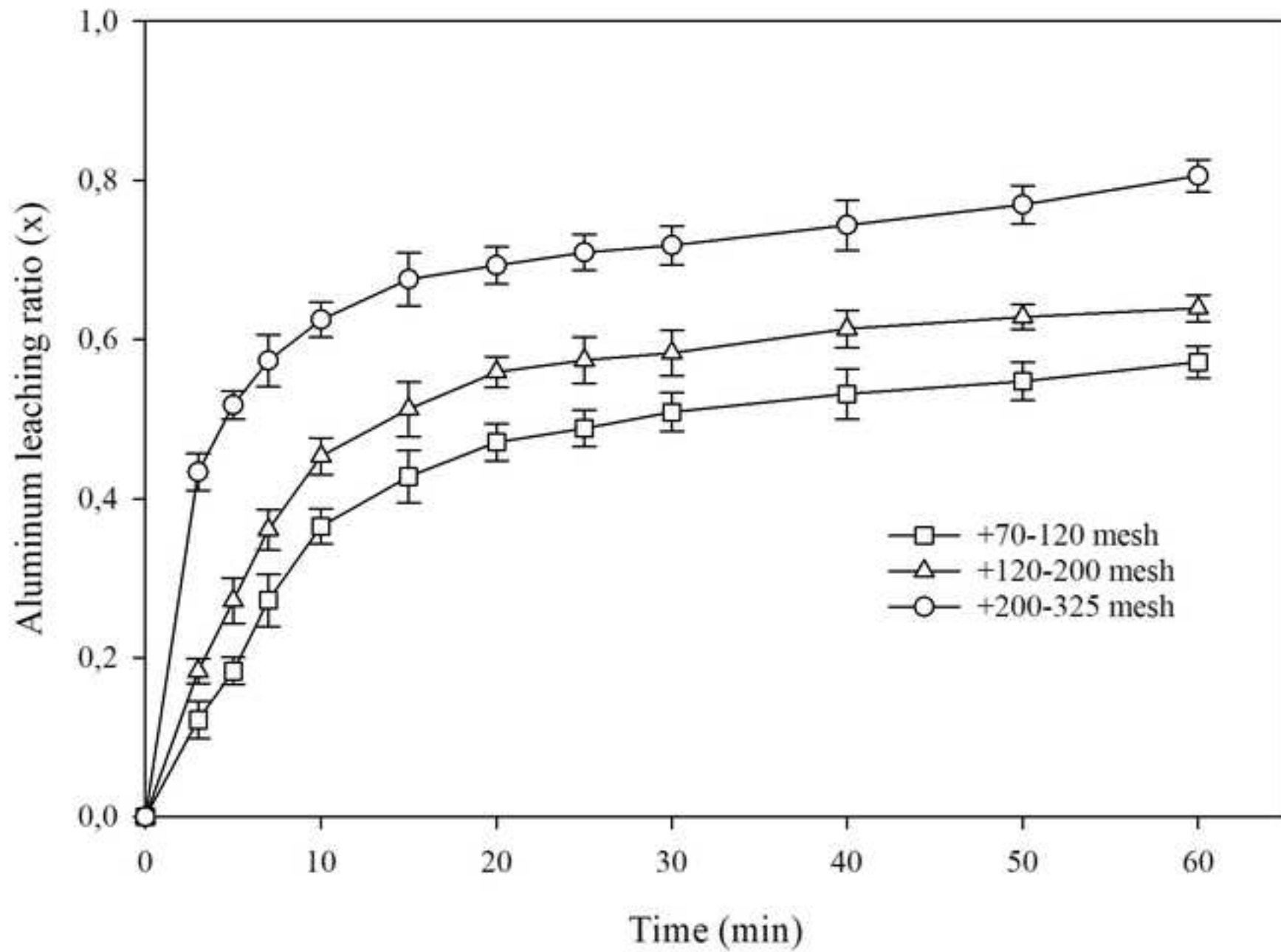
Figure 2

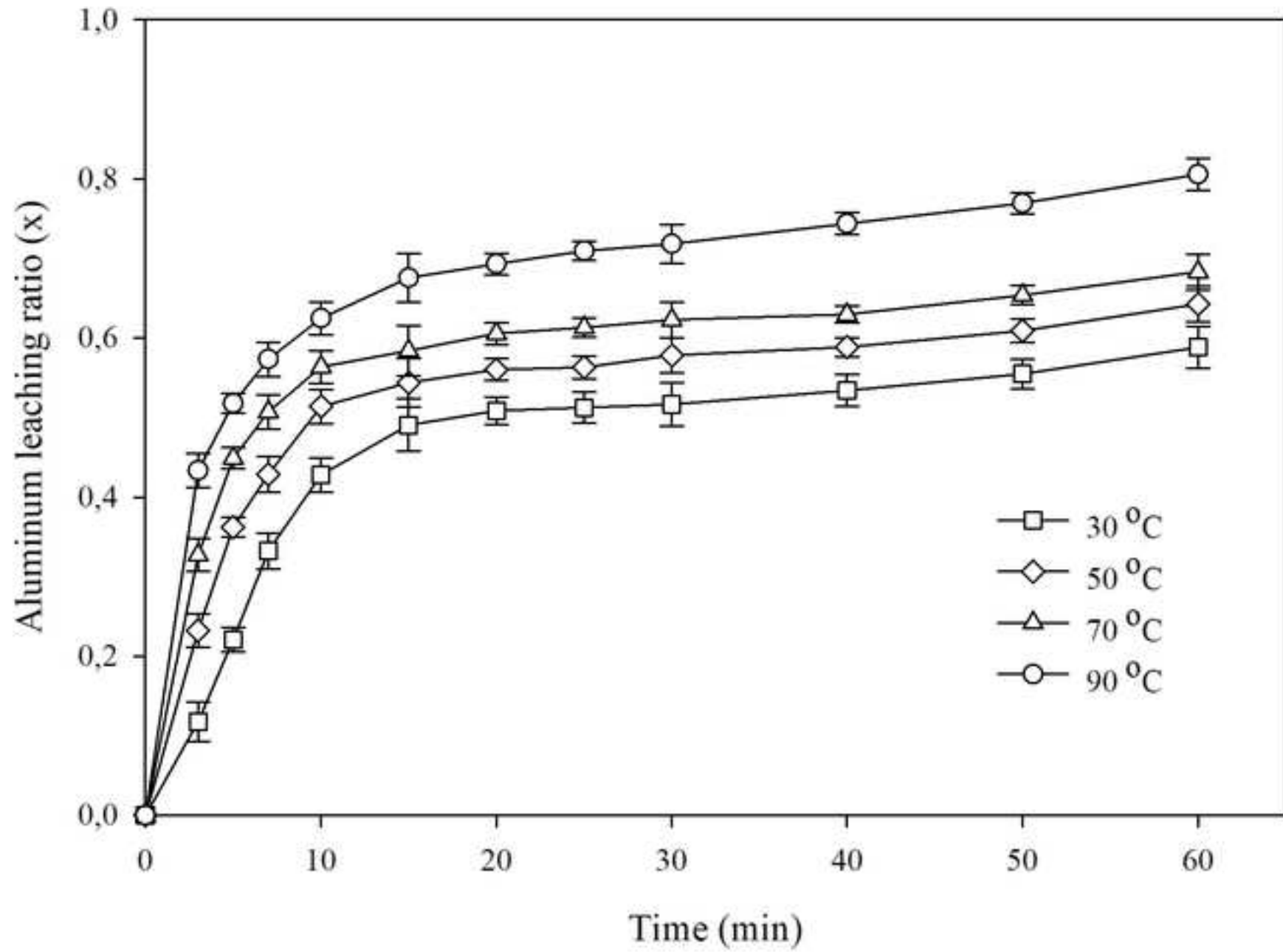


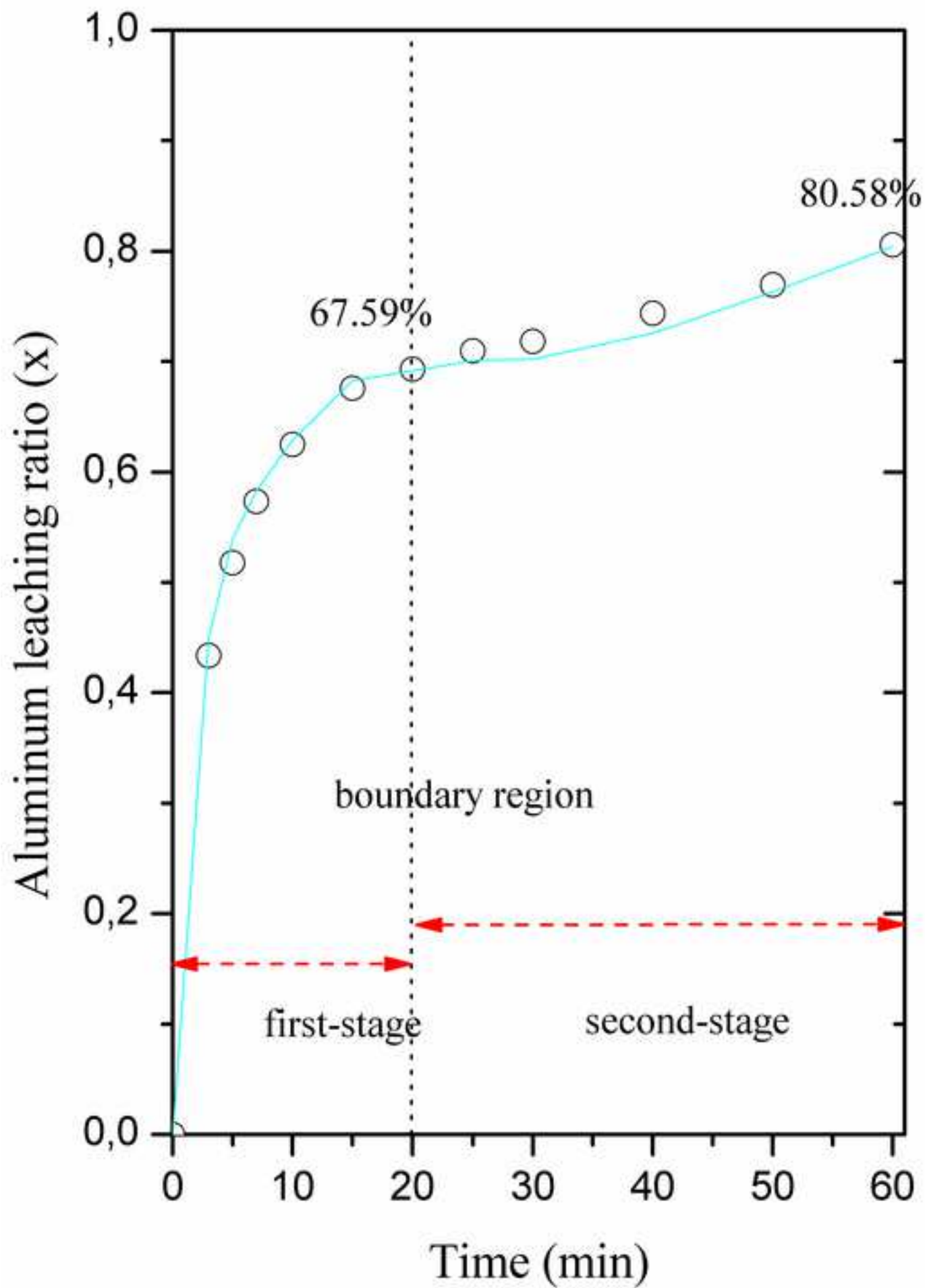
El	AN	Series	unn. C [wt.%]	norm. C [wt.%]
Al	13	K-series	8.49	32.78
Si	14	K-series	12.73	49.15
Fe	26	K-series	4.68	18.07
Total:			25.91	100.00

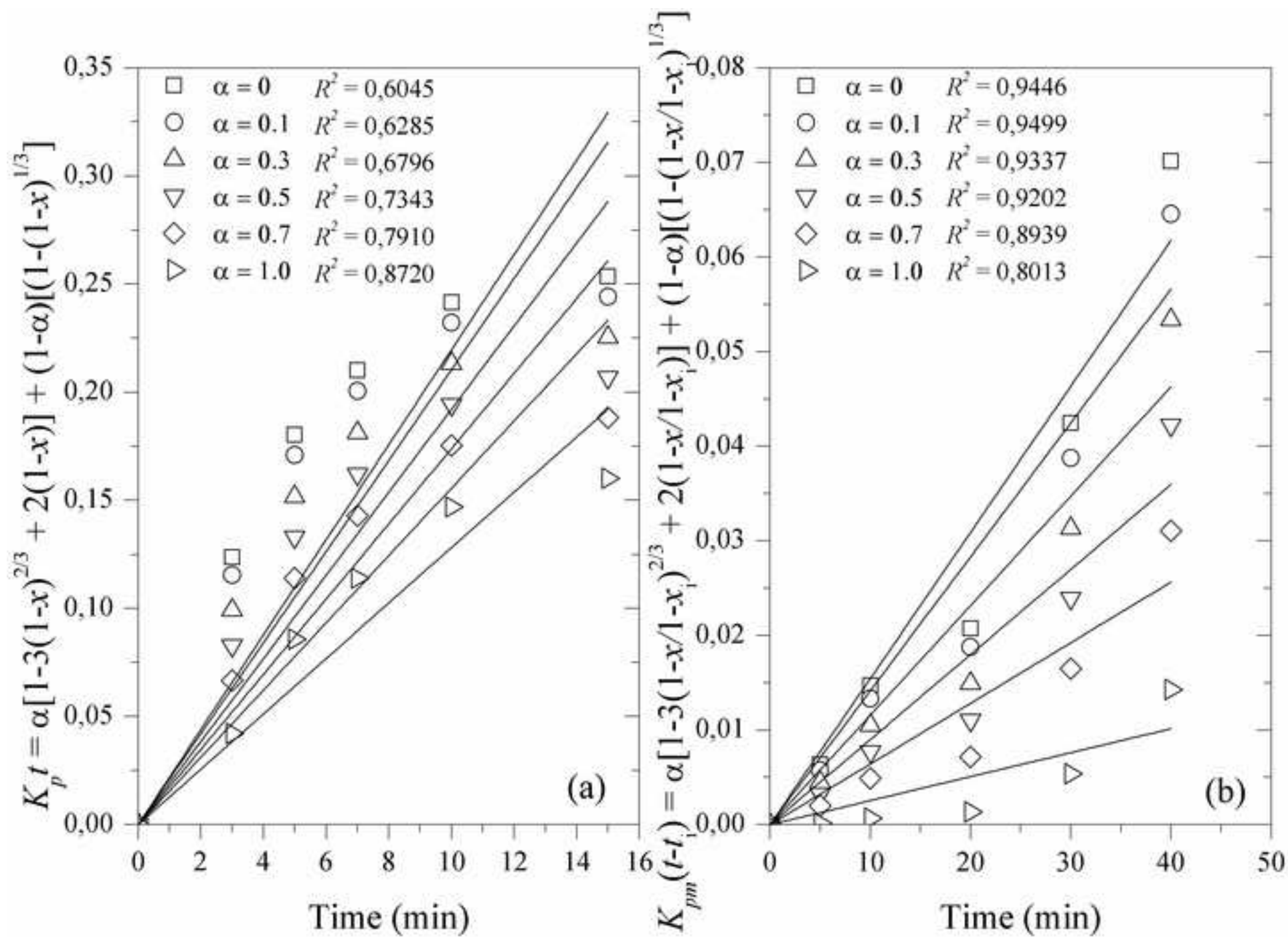


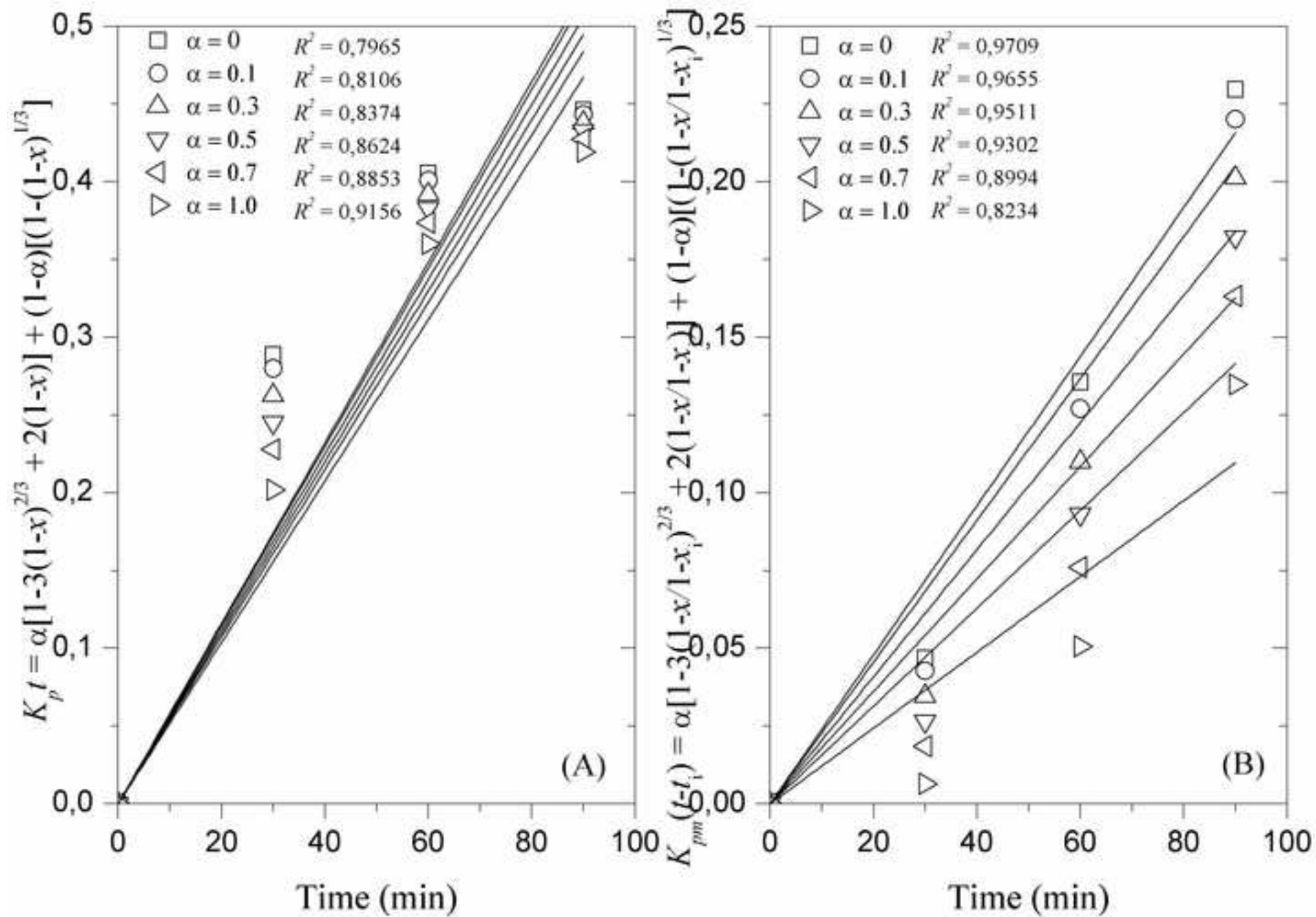












####REVISION SUBMISSION CONFIRMATION



27 of 41 < >

ESPR: Submission Confirmation for ESPR-D-19-11554R1 -
[EMID:3b1edfdad85b1b61] External Inbox x



Environmental Science and Pollution Research <em@editorialmanager.com>
to me ▾

Wed, Mar 18, 2020, 9:04 AM ☆ ↶ ⋮

Ref.: Ms. No. ESPR-D-19-11554R1
Aluminum leaching from water treatment sludge using hydrochloric acid and kinetic study

Dear Dr. Putra,

Environmental Science and Pollution Research has received your revised submission.

You may check the status of your manuscript by logging onto Editorial Manager at <https://www.editorialmanager.com/espr/>.

Kind regards,

Editorial Office
Environmental Science and Pollution Research

####ACCEPTANCE OF MANUSCRIPT

ESPR: Your manuscript ESPR-D-19-11554R1 - [EMID:a3cb9fb1f21f86ce] External Inbox x



Ta Yeong Wu <em@editorialmanager.com>

Wed, Apr 15, 2020, 11:54 PM

to me ▾



CC: wu.ta.yeong@monash.edu, tayeong@hotmail.com

Ref.: Ms. No. ESPR-D-19-11554R1

Aluminum leaching from water treatment sludge using hydrochloric acid and kinetic study
Environmental Science and Pollution Research

Dear Dr. Putra,

I am pleased to tell you that your work has now been accepted for publication in Environmental Science and Pollution Research. This letter serves as an acceptance certificate. Your article has been sent to the production service and you will receive the proofs soon.

If you have any question, please contact Dennis Villahermosa + dennis.villahermosa@springer.com

Thank you for submitting your work to this journal.

With kind regards,

Assoc. Prof. Ta Yeong Wu

Editor

Environmental Science and Pollution Research

###PROOF OF THE ACCEPTED MANUSCRIPT BEFORE PUBLICATION

Article Title : Aluminum leaching from water treatment sludge using hydrochloric acid and kinetic study

DOI : 10.1007/s11356-020-08922-x

ESPR-D-19-11554R1

Dear Author,

We are pleased to inform you that your paper is nearing publication. You can help us facilitate quick and accurate publication by using our e.Proofing system. The system will show you an HTML version of the article that you can correct online. In addition, you can view/download a PDF version for your reference.

As you are reviewing the proofs, please keep in mind the following:

- This is the only set of proofs you will see prior to publication.
- Only errors introduced during production process or that directly compromise the scientific integrity of the paper may be corrected.
- Any changes that contradict journal style will not be made.
- Any changes to scientific content (including figures) will require editorial review and approval.

Please check the author/editor names very carefully to ensure correct spelling, correct sequence of given and family names and that the given and family names have been correctly designated (NB the family name is highlighted in blue).

Please submit your corrections within 2 working days and make sure you fill out your response to any AUTHOR QUERIES raised during typesetting. Without your response to these queries, we will not be able to continue with the processing of your article for Online Publication.

Your article proofs are available at:

https://eproofing.springer.com/journals_v2/index.php?token=Zo-bYQ-x4T3djFZfVEqQPEfOTNGpMxn5kCzoOTQVMps

The URL is valid only until your paper is published online. It is for proof purposes only and may not be used by third parties.

Should you encounter difficulties with the proofs, please contact me.

We welcome your comments and suggestions. Your feedback helps us to improve the system.

Thank you very much.

Sincerely yours,

Springer Nature Correction Team

SPI Global
LP Information Technology Park,
Jose Romero Sr. St.,
Bagacay, Dumaguete City,
Negros Oriental, 6200 Philippines



Agus Mirwan <agusmirwan@ulm.ac.id>

Fwd: ESPR: Your manuscript ESPR-D-19-11554R1 - [EMID:a3cb9fb1f21f86ce]

7 messages

Meilana Dharma Putra <mdputra@ulm.ac.id>

Thu, Apr 16, 2020 at 12:26 AM

To: Agus Mirwan <agusmirwan@ulm.ac.id>, liu1958@mail.ntust.edu.tw, alimohad@chem-eng.its.ac.id, susianto@chem-eng.its.ac.id, renanto@chem-eng.its.ac.id, susianto.sst@gmail.com, alimohay@yahoo.com

Dear Authors,

I am glad to inform you that finally our article has been accepted in a highly reputable journal of Environmental Science and Pollution Research (ESPR) (Springer Publisher).

This journal has been indexed WoS with a high impact factor of 2.914 (5 years IF=3.2) and Scopus (Q1, Hindex=82).

I also enclose the accepted manuscript (in the form of revised manuscript) as attached.

Hopefully, we could produce some articles in the future.

Thanks for your contribution and cooperation.

Best regards,

Meilana Dharma Putra

Chemical Engineering Department

Lambung Mangkurat University

----- Forwarded message -----

From: **Ta Yeong Wu** <em@editorialmanager.com>

Date: Wed, Apr 15, 2020 at 11:54 PM

Subject: ESPR: Your manuscript ESPR-D-19-11554R1 - [EMID:a3cb9fb1f21f86ce]

To: Meilana Dharma Putra <mdputra@ulm.ac.id>

CC: wu.ta.yeong@monash.edu, tayeong@hotmail.com

Ref.: Ms. No. ESPR-D-19-11554R1

Aluminum leaching from water treatment sludge using hydrochloric acid and kinetic study

Environmental Science and Pollution Research

Dear Dr. Putra,

I am pleased to tell you that your work has now been accepted for publication in Environmental Science and Pollution Research. This letter serves as an acceptance certificate. Your article has been sent to the production service and you will receive the proofs soon.

If you have any question, please contact Dennis Villahermosa + dennis.villahermosa@springer.com

Thank you for submitting your work to this journal.

With kind regards,

Assoc. Prof. Ta Yeong Wu

Editor

Environmental Science and Pollution Research


As a result of the significant disruption that is being caused by the COVID-19 pandemic we are very aware that many researchers will have difficulty in meeting the timelines associated with our peer review process during normal times. Please do let us know if you need additional time. Our systems will continue to remind you of the original timelines but we intend to be highly flexible at this time.

This letter contains confidential information, is for your own use, and should not be forwarded to third parties.

Recipients of this email are registered users within the Editorial Manager database for this journal. We will keep your information on file to use in the process of submitting, evaluating and publishing a manuscript. For more information on how we use your personal details please see our privacy policy at <https://www.springernature.com/production-privacy-policy>. If you

no longer wish to receive messages from this journal or you have questions regarding database management, please contact the Publication Office at the link below.

In compliance with data protection regulations, you may request that we remove your personal registration details at any time. (Use the following URL: <https://www.editorialmanager.com/espr/login.asp?a=r>). Please contact the publication office if you have any questions.

 **ESPR-D-19-11554_R1 (1).pdf**
2687K

Prof. Ir. Renanto, M.Sc.Ph.D(400) <renanto@chem-eng.its.ac.id> Thu, Apr 16, 2020 at 6:19 AM
To: Meilana Dharma Putra <mdputra@ulm.ac.id>, Agus Mirwan <agusmirwan@ulm.ac.id>, "liu1958@mail.ntust.edu.tw" <liu1958@mail.ntust.edu.tw>, "Prof. Dr.Ir. Ali Altway, M.Sc.(251)" <alimohad@chem-eng.its.ac.id>, "Dr.Ir. Susianto, DEA.(1336)" <susianto@chem-eng.its.ac.id>, "susianto.sst@gmail.com" <susianto.sst@gmail.com>, "alimohay@yahoo.com" <alimohay@yahoo.com>

Dear all,
Congrats to Dr. Meilana Dharma Putra and Dr. Agus Mirwan and other collaborators, for the good work. Please keep the good work to reach highest goals in UNLAM and nationwide.
Regards,
Renanto
Get [Outlook for iOS](#)

From: Meilana Dharma Putra <mdputra@ulm.ac.id>
Sent: Wednesday, April 15, 2020 11:26:36 PM
To: Agus Mirwan <agusmirwan@ulm.ac.id>; liu1958@mail.ntust.edu.tw <liu1958@mail.ntust.edu.tw>; Prof. Dr.Ir. Ali Altway, M.Sc.(251) <alimohad@chem-eng.its.ac.id>; Dr.Ir. Susianto, DEA.(1336) <susianto@chem-eng.its.ac.id>; Prof. Ir. Renanto, M.Sc.Ph.D(400) <renanto@chem-eng.its.ac.id>; susianto.sst@gmail.com <susianto.sst@gmail.com>; alimohay@yahoo.com <alimohay@yahoo.com>
Subject: Fwd: ESPR: Your manuscript ESPR-D-19-11554R1 - [EMID:a3cb9fb1f21f86ce]

[Quoted text hidden]

Agus Mirwan <agusmirwan@ulm.ac.id> Thu, Apr 16, 2020 at 2:55 PM
To: "Prof. Ir. Renanto, M.Sc.Ph.D(400)" <renanto@chem-eng.its.ac.id>
Cc: Meilana Dharma Putra <mdputra@ulm.ac.id>, "liu1958@mail.ntust.edu.tw" <liu1958@mail.ntust.edu.tw>, "Prof. Dr.Ir. Ali Altway, M.Sc.(251)" <alimohad@chem-eng.its.ac.id>, "Dr.Ir. Susianto, DEA.(1336)" <susianto@chem-eng.its.ac.id>, "susianto.sst@gmail.com" <susianto.sst@gmail.com>, "alimohay@yahoo.com" <alimohay@yahoo.com>

Dear All,

Alhamdulillah ...

I am very pleased to receive this information. Thank you to all for your help, support and cooperation so far, especially to Dr. Meilana D Putra, Prof. JC. Liu and my supervisors Prof. Renanto, Prof. Ali Altway, and Dr. Susianto.
I hope this collaboration will continue in the future.

Best regards,
Agus Mirwan
Chemical Engineering Department
Lambung Mangkurat University

[Quoted text hidden]

Mail Delivery Subsystem <mailer-daemon@googlemail.com>
To: agusmirwan@ulm.ac.id

Thu, Apr 16, 2020 at 2:56 PM



Address not found

Your message wasn't delivered to **alimohay@yahoo.com** because the address couldn't be found, or is unable to receive mail.

The response from the remote server was:

554 delivery error: dd Not a valid recipient - atlas306.free.mail.bf1.yahoo.com

Final-Recipient: rfc822; alimohay@yahoo.com

Action: failed

Status: 5.0.0

Remote-MTA: dns; mta7.am0.yahoodns.net. (67.195.204.74, the server for the domain yahoo.com.)

Diagnostic-Code: smtp; 554 delivery error: dd Not a valid recipient - atlas306.free.mail.bf1.yahoo.com

Last-Attempt-Date: Wed, 15 Apr 2020 23:56:03 -0700 (PDT)

----- Forwarded message -----

From: Agus Mirwan <agusmirwan@ulm.ac.id>

To: "Prof. Ir. Renanto, M.Sc.Ph.D(400)" <renanto@chem-eng.its.ac.id>

Cc: Meilana Dharma Putra <mdputra@ulm.ac.id>, "liu1958@mail.ntust.edu.tw" <liu1958@mail.ntust.edu.tw>, "Prof. Dr.Ir. Ali Altway, M.Sc.(251)" <alimohad@chem-eng.its.ac.id>, "Dr.Ir. Susianto, DEA.(1336)" <susianto@chem-eng.its.ac.id>, "susianto.sst@gmail.com" <susianto.sst@gmail.com>, "alimohay@yahoo.com" <alimohay@yahoo.com>

Bcc:

Date: Thu, 16 Apr 2020 14:55:49 +0800

Subject: Re: ESPR: Your manuscript ESPR-D-19-11554R1 - [EMID:a3cb9fb1f21f86ce]

Dear All,

Alhamdulillah ...

I am very pleased to receive this information. Thank you to all for your help, support and cooperation so far, especially to Dr. Meilana D Putra, Prof. JC. Liu and my supervisors Prof. Renanto, Prof. Ali Altway, and Dr. Susianto.

I hope this collaboration will continue in the future.

Best regards,

Agus Mirwan

Chemical Engineering Department

Lambung Mangkurat University

On Thu, Apr 16, 2020 at 6:19 AM Prof. Ir. Renanto, M.Sc.Ph.D(400) <renanto@chem-eng.its.ac.id> wrote:

> Dear all,
> Congrats to Dr. Meilana Dharma Putra and Dr. Agus Mirwan and other
> collaborators, for the good work. Please keep the good work to reach
> highest goals in UNLAM and nationwide.

> Regards,

> Renanto

> Get Outlook for iOS <<https://aka.ms/o0ukef>>

> -----

> *From:* Meilana Dharma Putra <mdputra@ulm.ac.id>

> *Sent:* Wednesday, April 15, 2020 11:26:36 PM

> *To:* Agus Mirwan <agusmirwan@ulm.ac.id>; liu1958@mail.ntust.edu.tw <

> liu1958@mail.ntust.edu.tw>; Prof. Dr.Ir. Ali Altway, M.Sc.(251) <

> alimohad@chem-eng.its.ac.id>; Dr.Ir. Susianto, DEA.(1336) <

> susianto@chem-eng.its.ac.id>; Prof. Ir. Renanto, M.Sc.Ph.D(400) <

> renanto@chem-eng.its.ac.id>; susianto.sst@gmail.com <

> susianto.sst@gmail.com>; alimohay@yahoo.com <alimohay@yahoo.com>

> *Subject:* Fwd: ESPR: Your manuscript ESPR-D-19-11554R1 -

> [EMID:a3cb9fb1f21f86ce]

>

> Dear Authors,

>

> I am glad to inform you that finally our article has been accepted in a
> highly reputable journal of Environmental Science and Pollution Research
> (ESPR) (Springer Publisher).
> This journal has been indexed WoS with a high impact factor of 2.914 (5
> years IF=3.2) and Scopus (Q1, Hindex=82).
> I also enclose the accepted manuscript (in the form of revised manuscript)
> as attached.
> Hopefully, we could produce some articles in the future.
> Thanks for your contribution and cooperation.
>
> Best regards,
> Meilana Dharma Putra
> Chemical Engineering Department
> Lambung Mangkurat University
>
>
> ----- Forwarded message -----
> From: *Ta Yeong Wu* <em@editorialmanager.com>
> Date: Wed, Apr 15, 2020 at 11:54 PM
> Subject: ESPR: Your manuscript ESPR-D-19-11554R1 - [EMID:a3cb9fb1f21f86ce]
> To: Meilana Dharma Putra <mdputra@ulm.ac.id>
>
>
> CC: wu.ta.yeong@monash.edu, tayeong@hotmail.com
>
> Ref.: Ms. No. ESPR-D-19-11554R1
> Aluminum leaching from water treatment sludge using hydrochloric acid and
> kinetic study
> Environmental Science and Pollution Research
>
> Dear Dr. Putra,
>
> I am pleased to tell you that your work has now been accepted for
> publication in Environmental Science and Pollution Research. This letter
> serves as an acceptance certificate. Your article has been sent to the
> production service and you will receive the proofs soon.
>
> If you have any question, please contact Dennis Villahermosa +
> dennis.villahermosa@springer.com
>
> Thank you for submitting your work to this journal.
>
>
> With kind regards,
> Assoc. Prof. Ta Yeong Wu
> Editor
> Environmental Science and Pollution Research
>
>
> —
>
>
>
>
> As a result of the significant disruption that is being caused by the
> COVID-19 pandemic we are very aware that many researchers will have
> difficulty in meeting the timelines associated with our peer review process
> during normal times. Please do let us know if you need additional time.
> Our systems will continue to remind you of the original timelines but we
> intend to be highly flexible at this time.
>
>
> This letter contains confidential information, is for your own use, and
> should not be forwarded to third parties.
>
> Recipients of this email are registered users within the Editorial Manager
> database for this journal. We will keep your information on file to use in
> the process of submitting, evaluating and publishing a manuscript. For more
> information on how we use your personal details please see our privacy
>
> ----- Message truncated -----

To: Agus Mirwan <agusmirwan@ulm.ac.id>

Cc: "Prof. Ir. Renanto, M.Sc.Ph.D(400)" <renanto@chem-eng.its.ac.id>, "liu1958@mail.ntust.edu.tw" <liu1958@mail.ntust.edu.tw>, "Prof. Dr.Ir. Ali Altway, M.Sc.(251)" <alimohad@chem-eng.its.ac.id>, "Dr.Ir. Susianto, DEA.(1336)" <susianto@chem-eng.its.ac.id>, "susianto.sst@gmail.com" <susianto.sst@gmail.com>, "alimohay@yahoo.com" <alimohay@yahoo.com>

Dear Authors,

The article now goes to the production of publication as the uncorrected proof has been issued by the administrator of the publisher.

Please check the name and affiliation of each author. If there is no response till tomorrow (April 23, 2020) at 15.00 pm (West Indonesia Time); I assume that those provided information are correct. I should return the corrected article as soon as possible.

Hopefully, Dr. Agus Mirwan could provide the original Figure 2 as requested.

If we can return the uncorrected proof to the publisher before the next two days; the article may immediately be published.

Please don't share this uncorrected proof to your colleague, because this article format is still informal standard.


Thank you for your kind cooperation and attention.

Best regards,

Meilana Dharma Putra

Chemical Engineering Department
Lambung Mangkurat University

[Quoted text hidden]

 11356_2020_8922_Author.pdf
607K

Prof. Ir. Renanto, M.Sc.Ph.D(400) <renanto@chem-eng.its.ac.id>

Wed, Apr 22, 2020 at 9:15 PM

To: Meilana Dharma Putra <mdputra@ulm.ac.id>, Agus Mirwan <agusmirwan@ulm.ac.id>

Cc: "liu1958@mail.ntust.edu.tw" <liu1958@mail.ntust.edu.tw>, "Prof. Dr.Ir. Ali Altway, M.Sc.(251)" <alimohad@chem-eng.its.ac.id>, "Dr.Ir. Susianto, DEA.(1336)" <susianto@chem-eng.its.ac.id>, "susianto.sst@gmail.com" <susianto.sst@gmail.com>, "alimohay@yahoo.com" <alimohay@yahoo.com>

Dear Dr. Meilana Dharma Putra,

please be advised that my name is Renanto (first name) Handogo (family name).

Thank you.

renanto

From: Meilana Dharma Putra <mdputra@ulm.ac.id>

Sent: Wednesday, April 22, 2020 6:02 AM

To: Agus Mirwan <agusmirwan@ulm.ac.id>

Cc: Prof. Ir. Renanto, M.Sc.Ph.D(400) <renanto@chem-eng.its.ac.id>; liu1958@mail.ntust.edu.tw <liu1958@mail.ntust.edu.tw>; Prof. Dr.Ir. Ali Altway, M.Sc.(251) <alimohad@chem-eng.its.ac.id>; Dr.Ir. Susianto, DEA.(1336) <susianto@chem-eng.its.ac.id>; susianto.sst@gmail.com <susianto.sst@gmail.com>; alimohay@yahoo.com <alimohay@yahoo.com>

Subject: Re: ESPR: Your manuscript ESPR-D-19-11554R1 - [EMID:a3cb9fb1f21f86ce]

[Quoted text hidden]

Meilana Dharma Putra <mdputra@ulm.ac.id>

Thu, Apr 23, 2020 at 6:19 PM

To: "Prof. Ir. Renanto, M.Sc.Ph.D(400)" <renanto@chem-eng.its.ac.id>

Cc: Agus Mirwan <agusmirwan@ulm.ac.id>, "liu1958@mail.ntust.edu.tw" <liu1958@mail.ntust.edu.tw>, "Prof. Dr.Ir. Ali Altway, M.Sc.(251)" <alimohad@chem-eng.its.ac.id>, "Dr.Ir. Susianto, DEA.(1336)" <susianto@chem-eng.its.ac.id>, "susianto.sst@gmail.com" <susianto.sst@gmail.com>, "alimohay@yahoo.com" <alimohay@yahoo.com>

Dear Prof. Renanto

Thanks for the correction. The mistake is made from the administrator transferring the content to their template, because your name is correctly mentioned in the accepted manuscript as well as in their metadata.

Anyway, thank you for the clarification, I will make it in the correction to the publisher.

Best regards,

12/29/22, 9:47 PM

Universitas Lambung Mangkurat Mail - Fwd: ESPR: Your manuscript ESPR-D-19-11554R1 - [EMID:a3cb9fb1f21f86ce]

Meilana Dharma Putra
Chemical Engineering Department
Lambung Mangkurat University

[Quoted text hidden]