

# First records of *Mylonchulus brachyuris* (Bütschli, 1873) (Nematoda, Mononchida, Mylonchulidae) from South Kalimantan, Indonesia

*by* Abdul Gafur

---

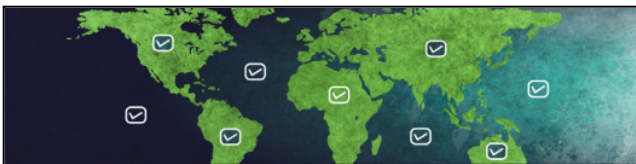
**Submission date:** 24-Aug-2022 12:55PM (UTC+0700)

**Submission ID:** 1886286257

**File name:** tikel\_-\_CheckList\_18-2\_-\_Gafur\_2022\_-\_Mylonchulus\_brachyuris.pdf (1.25M)


**Word count:** 3476


**Character count:** 17831



# First records of *Mylonchulus brachyuris* (Bütschli, 1873) (Nematoda, Mononchida, Mylonchulidae) from South Kalimantan, Indonesia

Abdul Gafur<sup>1\*</sup>, Aulia Ajizah<sup>2</sup>

<sup>1</sup> Program Studi Biologi, Universitas Lambung Mangkurat, Banjarbaru, Kalimantan Selatan, Indonesia • [agafur@ulm.ac.id](mailto:agafur@ulm.ac.id)  <https://orcid.org/0000-0002-7904-8722>

<sup>2</sup> Program Studi Pendidikan Biologi, Universitas Lambung Mangkurat, Banjarmasin, Kalimantan Selatan, Indonesia • [auliaajizah@ulm.ac.id](mailto:auliaajizah@ulm.ac.id)  <https://orcid.org/0000-0001-8888-0310>

\* Corresponding author

## Abstract

Mononchids are predatory soil nematodes of ecological and agricultural importance. Our morphological examination of preserved mononchid specimens collected from South Kalimantan, Indonesia, revealed that they are *Mylonchulus brachyuris* (Bütschli, 1873). The morphological characters of these South Kalimantan specimens generally fit the published descriptions of this species. However, they have some deviations which are considered to be intraspecific variations and contribute to a redescription of the species. This is the first report of *M. brachyuris* from Indonesia, expanding the the distribution of the genus *Mylonchulus* Cobb, 1916 and adding to the nematode fauna in the Indonesian archipelago.

## Keywords

Borneo, description, identification, mononchid, morphology, nematodes

**Academic editor:** Fernando Carbayo | Received 25 November 2021 | Accepted 13 April 2022 | Published 28 April 2022

**Citation:** Gafur A, Ajizah A (2022) First records of *Mylonchulus brachyuris* (Bütschli, 1873) (Nematoda, Mononchida, Mylonchulidae) from South Kalimantan, Indonesia. Check List 18 (2): 425–430. <https://doi.org/10.15560/18.2.425>

## Introduction

Mononchids are predatory nematodes that can easily be recognized owing to their prominent buccal cavity and feeding apparatus. They can be found in all kinds of soils, and in much greater number in undisturbed soils (Ahmad and Jairajpuri 2010). One of the most widely distributed genera of mononchids is *Mylonchulus* Cobb, 1916. Species of this genus have been reported from Western, Central, and Eastern Europe; North, Central and South America; Africa (Egypt, South Africa, Nigeria, Zaire, Congo, and Mauritius); Asia (India, Pakistan, Nepal, Iran, Vietnam, Thailand, Malaysia, Singapore, Brunei,

Indonesia, Korea, Japan); and Oceania (Hawaii, Fiji, New Caledonia, Australia, New Zealand, New Guinea) (Andrassy 1992; Ahmad and Jairajpuri 2010).

In Indonesia, *Mylonchulus lacustris* (Cobb, 1915) has been collected from Sumatra and Java (Schneider 1937). No further records of the species have been made, and no other *Mylonchulus* species have since been reported from Indonesia, despite some statements on the occurrence of the genus from the country (Suatmadji et al. 1988; Gafur 2006).

During nematode surveys held in South Kalimantan

in 2005 and 2016-2017, specimens of mononchids were collected and preserved. These were identified as belonging to the genus *Mylonchulus*. In the present study, we examined these specimens further and identified them as *M. brachyuris* (Bütschli, 1873). They are the basis of the first records of this species in Indonesia.

## Methods

During the 2005 survey, mononchid nematodes were collected from several localities in the District of Banjar, Borneo, Indonesia. Subsequent surveys in 2016 and 2017 found specimens from the Districts of Banjar and Tanah Laut in Borneo (Fig. 1).

Nematodes were extracted from soils using the Whitehead and Hemmin (1965) tray method. Nematodes found were killed, fixed in hot 4% formalin, and transferred to pure glycerine using the rapid method of Seinhorst (1959). The 2005 specimens were mounted in Cobb's double coverslip slides, while subsequent specimens were mounted in conventional microscope slides plus coverslip. All specimens were deposited in the Koleksi Nasional Nematoda Universitas Lambung Mangkurat (KNNULM) at Laboratorium Biosistemika, Fakultas Matematika dan Ilmu Pengetahuan Alam, Universitas Lambung Mangkurat.

Specimens were examined under a Nikon E100 compound microscope equipped with an Amscope MU900 digital camera connected to a laptop. Morphometric measurements were taken using the dedicated software of the camera (Amscope version: x64, 4.11.17864.20201020) that had been calibrated with an ocular micrometer.

## Results

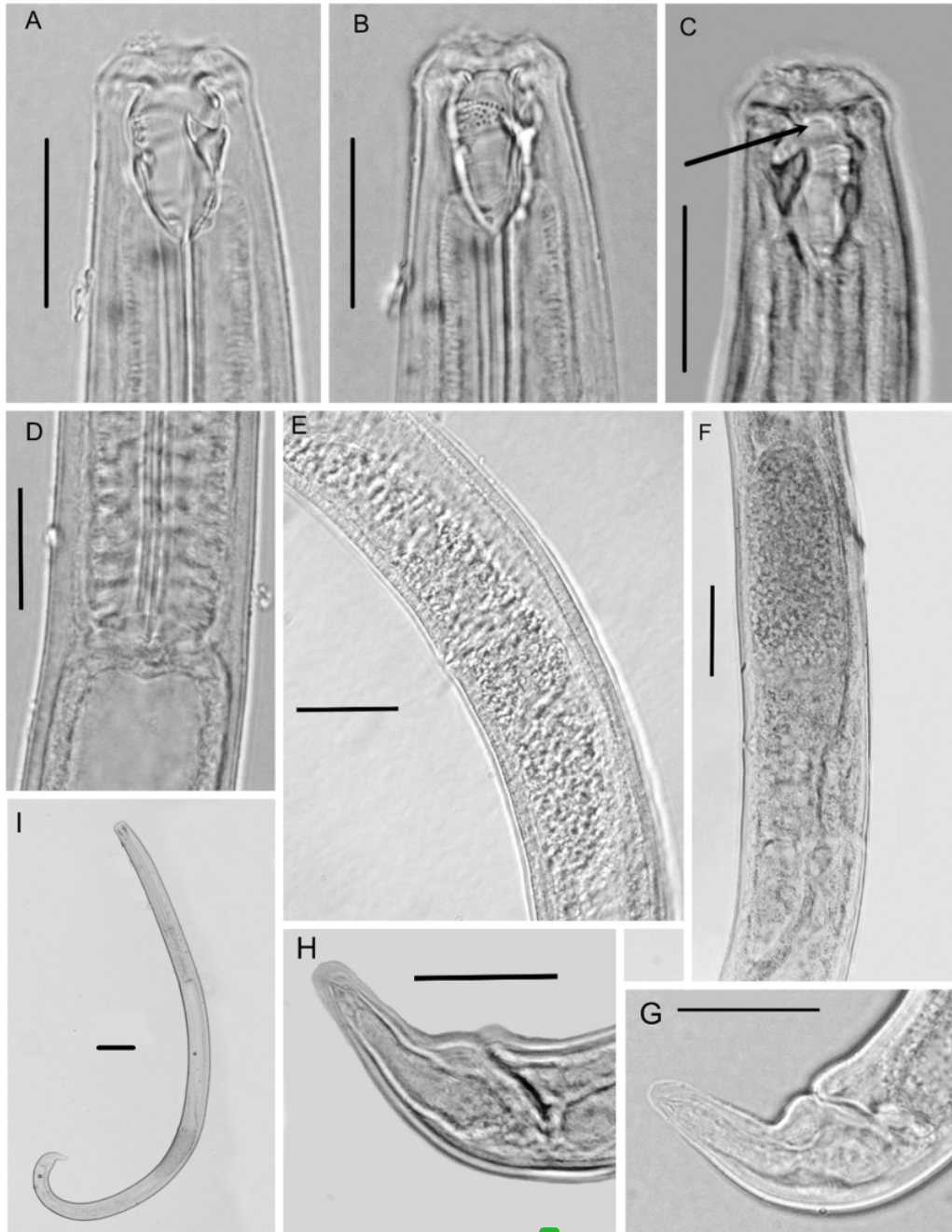
### *Mylonchulus brachyuris* (Bütschli, 1873)

**Materials examined.** INDONESIA – Kalimantan Selatan Province • Aluh-Aluh Subdistrict, Aluh-Aluh Kecamatan Muara; -03.4344, 114.5224; 5 m alt.; 25.VII.2005; A. Gafur leg.; whole body; in rice field; 2♀, KNNULM 03.001.01 • Simpang Empat Subdistrict, Cabi; -03.2922, 115.0218; 30 m alt.; 11.X.2016; R. Adhany leg.; whole body; dragon fruit; 2♀, KNNULM 03.001.02 • Gambut Subdistrict, Banyu Hirang; -03.3772, 114.7052; 7 m alt.; 10.VII.2017; S. Aisyah leg.; whole body; cassava; 3♀, KNNULM 03.001.01.03 • Tambang Ulang Subdistrict, Sungai Jelai; -03.7112, 114.7474; 50 m alt.; 20.VII.2017; N. Halisah leg.; whole body; in corn field; 2♀, KNNULM 03.001.04.

**Identification.** Female (Fig. 2, Table 1). Body ventrally arcuate after fixation, tapering slightly towards extremities, posterior part more curved than anterior. Cuticle (outer and inner) smooth. Lip region slightly offset, marginally wider than adjoining body, 22 µm wide. Labial papillae slightly projecting above labial contour. Amphidial aperture located at 9–10 µm from anterior end of body. Buccal cavity heavily sclerotized, goblet or funnel-shaped, strongly tapering at base, 23–24 µm long, 14–16 µm broad. Dorsal tooth large, claw-like, located in anterior part of buccal cavity, directed anteriorly, its sharply pointed apex at 71–74% of buccal cavity length from its base. Subventral walls with denticles arranged in six transverse rows, uppermost row at level of dorsal tooth apex. Subventral teeth present. Pharynx cylindrical, muscular, 25–26% of body length. Excretory pore indistinct. Junction between pharynx and intestine



**Figure 1.** Distribution of *Mylonchulus brachyuris* (Bütschli, 1873). Circles on the main map indicate published occurrences worldwide. Inset map of South Kalimantan showing the four source localities of specimens for the present study.



**Figure 2.** *Mylonchulus brachyuris* (Bütschli, 1873) mature female, lateral view. **A.** Anterior region, showing dorsal tooth. **B.** Anterior region, showing rows of denticles. **C.** Anterior region showing amphidial aperture. **D.** Esophago-intestinal junction, nontuberculate. **E, F.** Gonad. **G, H.** Tail with subdorsal opening. **I.** Whole body. Scale bars: A–H = 20  $\mu$ m; I = 50  $\mu$ m.

non-tuberculate. Female genital system amphidelphic, anterior and posterior branch almost equal in length. Proximal end of oviduct with glandular cells. Vagina 12–16  $\mu$ m. Rectum 21  $\mu$ m, about one anal body-width long. Tail 37–41  $\mu$ m, 1.6 anal body-width long,

conoid, ventrally bent at half of length or closer to anus, then slightly tapering toward terminus. Caudal glands large, grouped, spinneret opening subdorsal.

Male not found.

The examined specimens showed the diagnostic



**Table 1.** Morphometrics of *Mylonchulus brachyuris* (Bütschli, 1873). Absolute measurements in  $\mu\text{m}$ ; mean  $\pm$  standard deviation in parenthesis.

Characters	Populations				Overall (n = 9)	Literature
	Aluh-Aluh (n = 2)	Simpang Empat (n = 2)	Cindai Alus (n = 3)	Tambang Ulang (n = 2)		
Body length	1245–1358	847.7–850.9	732.3–745.7	735.3–840.4	732.3–1358.0 (900.1 $\pm$ 237.0)	670–1430 <sup>a</sup>
Index <i>a</i>	34–34.1	24.7–27.3	19.5–28.1	22.0–26.1	19.5–34.1 (26.9 $\pm$ 4.8)	20–36 <sup>a</sup>
Index <i>b</i>	3.5–3.7	3.3	3.0–3.1	3.2	3.0–3.7 (3.3 $\pm$ 0.2)	3.1–4.2 <sup>a</sup>
Index <i>c</i>	29.2–32.6	24.8–26.3	25.9–34.1	26.2–31.8	24.8–34.1 (28.3 $\pm$ 3.3)	23.2–51 <sup>a</sup>
Index <i>c'</i>	1.5–1.8	1.6	1.1–1.7	1.5–1.6	1.1–1.8 (1.5 $\pm$ 0.2)	1–1.8 <sup>a</sup>
Index <i>V</i>	62.5–63.1	57.3–58.2	56.3–61	58.0–58.2	56.3–63.1 (59.4 $\pm$ 2.3)	56–65 <sup>a</sup>
% pharynx	25.2–26.1	27.2–30.8	28.9–30.5	28.2–28.7	25.2–30.8 (28.4 $\pm$ 2.0)	—
Max. body width	36.6–39.8	31–34.5	26.1–37.8	32.1–34.1	26.1–39.8 (33.3 $\pm$ 4.3)	—
Tail length	38.2–46.5	32.4–34.2	21.6–28.3	26.04–32.1	21.6–46.5 (31.8 $\pm$ 7.4)	23–55 <sup>a</sup>
Pharynx length	324.9–341.9	231.3–260.9	211.8–225.1	211.6–237.1	211.6–341.9 (252.1 $\pm$ 48.6)	279–360.5 <sup>a</sup>
Anal body width	24.9–26	20.8–24.7	16.6–19.6	17.0–20.8	16.6–26 (20.6 $\pm$ 3.2)	23–35 <sup>a</sup>
Buccal cavity length	24.5–25.2	20.6–21.2	17.4–19.4	17.9–19.3	17.4–25.2 (20.0 $\pm$ 2.9)	18–26 <sup>a</sup>
Buccal cavity width	11.7–11.8	10.0–10.4	9.0–9.6	9.5–10.9	9.0–11.8 (10.1 $\pm$ 1.0)	10–16.8 <sup>a</sup>
Dorsal tooth apex from buccal cavity base	18.1–19.9	14.9	13.2–15.3	14.1–14.9	13.2–19.9 (15.6 $\pm$ 2.1)	16–19 <sup>a</sup>
Dorsal tooth apex % buccal cavity length	73.9–79.0	75.9–78.1	75.9–85.8	77.2–80.5	73.9–85.8 (78.3 $\pm$ 3.4)	72.2–87.5 <sup>a</sup>
Lip region width	20.9–21.5	18.8–23.8	18.3–19.3	17.5–21.0	17.5–23.8 (19.1 $\pm$ 1.3)	20–28 <sup>a</sup>
Lip region height	6.7–7.1	6.5–7	6.5–6.6	6.2–7.5	6.2–7.5 (6.4 $\pm$ 1.0)	8.4–9.8 <sup>a</sup>
Rectum length	17.1–19.4	19.2–21	15.8–21.2	14.8–19	14.8–21.2 (18.0 $\pm$ 1.7)	18–42.5 <sup>a</sup>

<sup>3</sup> *a* = body length  $\div$  maximum body width

*b* = body length  $\div$  distance from anterior to esophagointestinal junction

*c* = body length  $\div$  tail length

*c'* = tail length  $\div$  anal body width

*V* = distance anterior to vulva  $\div$  body length, in percent

<sup>2</sup> pharynx = distance from anterior to esophagointestinal junction  $\div$  body length, in percent

<sup>1</sup> Mulvey (1961), Jensen and Mulvey (1968), Jairajpuri (1970), Chaves (1990), Loof et al. (1990), Loof (2006), Farahmand et al. (2009).

<sup>4</sup> Chaves (1990), Loof (2006), Farahmand et al. (2009)

<sup>5</sup> Loof (2006), Farahmand et al. (2009)

<sup>6</sup> Jairajpuri (1970), Farahmand et al. (2009)

<sup>7</sup> Chaves (1990), Farahmand et al. (2009)

<sup>8</sup> Farahmand et al. (2009)

<sup>9</sup> Jairajpuri (1970)

characters of the genus *Mylonchulus* as described by Ahmad and Jairajpuri (2010): broad goblet-shaped buccal cavity with claw-like dorsal tooth obliquely directed anteriorly, subventral walls with small teeth in addition to denticles in transverse rows forming rasp-like field; non-tuberculate pharyngo-intestinal junction; and amphidelphic female genital system.

We attribute our South Kalimantan specimens to *M. brachyuris* based on the possession of the following features: caudal glands with short anal terminal opening, tail shorter than 1.5 anal body diameter, buccal cavity length  $\leq 20 \mu\text{m}$ , and body length  $\leq 1500 \mu\text{m}$ . General morphology of the specimens conforms well with the descriptions of *M. brachyuris* as given by Jairajpuri (1970) and Loof (2006) and the dichotomous key by Ahmad and Jairajpuri (2010).

Morphometric characters of our specimens, compared with those of *M. brachyuris* in the literature (Table 1), show that absolute measurements are at the lower end of the ranges, and some even beyond the lower limits. However, indices were practically within the ranges. Therefore, even though the examined specimens were

smaller, the proportions of different parts of the body correspond to *M. brachyuris*.

## Discussion

Compared to previous reports of *Mylonchulus brachyuris*, our South Kalimantan specimens showed some differences in the shape of the tail. Although these specimens conform to the general description of the tail of *M. brachyuris*, as ventrally arcuate with the dorsal side regularly rounded (Fig. 2F), compared to published drawings of *M. brachyuris* (Mulvey and Jensen 1967: fig. 84; Farahmand et al. 2009: fig. 3L; Jairajpuri 1970: fig. 3C, D; Loof 2006: fig. 13C), the tails of our specimens seemed less plump and showed stronger ventral bending, some even almost a right angle. Our specimens agree with *M. williamsi* Loof, 2006 (a synonym of *M. brachyuris* according to Ahmad and Jairajpuri 2010) in having a tail with a tapering terminal part and a subdorsal spinneret opening (Loof 2006: fig. 15D, E), but some specimens differ in having the ventral bend at approximately half of the tail length (versus closer to the anal opening). The

tail is similar to that of *M. hawaiiensis* (Cassidy, 1931) (Chaves 1990: fig. 1B; Jairajpuri 1970: fig. 2C, D; Khan and Jairajpuri 1979: fig. 3E; Mulvey and Jensen 1967: figs. 91, 92), *M. californicus* Jairajpuri, 1970 (Jairajpuri 1970: fig. 4B), and *M. minor* (Cobb, 1893) (Mulvey and Jensen 1967: figs. 99, 100; Tahseen et al. 2013: fig. 3W, X) in having the ventral bend but differs in having a subdorsal spinneret opening (versus terminal) and tapering terminal part (versus clavate). Our observation suggests that the tail of *M. brachyuris* shows characteristic tapering terminal part and subdorsal opening, and intraspecific variation in the position (halfway to closer to the anus) and development (weak to strong) of the ventral bend. This should appear in the future redescription of *M. brachyuris*.

Farahmand et al. (2009) and Chaves (1990) described that the head or lip region of *M. brachyuris* is slightly set off from adjoining body and gave a supporting photograph (Farahmand et al. 2009: fig. 4C) and line drawing (Chaves 1990: fig. 1A), respectively. Jairajpuri (1970) and Loof (2006) did not mention this distinctive character, but the in their figures of the species (Jairajpuri 1970: fig. 3A; Loof 2006: fig. 13A), the head contour was drawn with labial papillae, as shown by Chaves (1990), which gives the impression that the head is somewhat set off. Our specimens also show this (Fig. 2A–C).

Morphometric measurements of our South Kalimantan specimens show that they are generally smaller within the ranges as reported in the literature for *M. brachyuris* (Mulvey 1961; Jensen and Mulvey 1968; Jairajpuri 1970; Chaves 1990; Loof et al. 1990; Loof 2006; Farahmand et al. 2009). In all absolute measurements (Table 1), except body length, there were specimens smaller than the reported ranges. Therefore, our specimens extended the lower limit of most morphometric character ranges of *M. brachyuris*. This should also be incorporated in the future redescription of the species.

Comparison of morphometric characters of our specimens with those from Venezuela (Mulvey 1961) provides interesting insights. In body length, which reflects body size, Venezuelan specimens were the shortest (670–1080  $\mu\text{m}$ ) and constitute the smallest specimens of *M. brachyuris* ever recorded. However, our specimens had the shortest tails (21.6–46.5  $\mu\text{m}$  versus 27.0–42.0  $\mu\text{m}$ ). Some of our specimens had proportionately shorter tails, relative to body size, as was reflected in higher lower limit of index *c* (24.8–34.1  $\mu\text{m}$  versus 23.2–27.0  $\mu\text{m}$ ) than the Venezuelan specimens. In buccal cavity dimension, some of our specimens similarly were smaller than the Venezuelan specimens (17–25  $\times$  9–12  $\mu\text{m}$  versus 18–20  $\times$  10  $\mu\text{m}$ ), indicating a proportionately less spacious buccal cavity relative to body size.

In Indonesia, the only species of *Mylonchulus* reported so far has been *Mylonchulus lacustris* (Cobb, 1915) collected from Sumatera and Java (Schneider 1937), as well as northern Borneo (Tsalolikhin et al. 2012). Our specimens from South Kalimantan, Borneo, noticeably differ from this species in the following features: body length

<1360  $\mu\text{m}$  (versus >1800  $\mu\text{m}$ ); subventral walls of stoma with six transverse rows of denticles (versus seven); tail more slender ( $c' = 1.1\text{--}1.8$  versus 2.0) with some degree of ventral bending (versus ventrally curved without bending); vulva at mid-body ( $V\% = 56\text{--}63$ , versus more posterior,  $V\% = 64\text{--}65$ ). These differences confirm that the South Kalimantan specimens are not *M. lacustris*.

Another species found in Borneo, *Mylonchulus sessus* Jairajpuri, 1982, has been reported from Brunei (Jairajpuri 1982). Our specimens differed from this species in having: body length <1360  $\mu\text{m}$  (versus >1380  $\mu\text{m}$ ); subventral walls of stoma with six transverse rows of denticles (versus seven or eight); tail proportionally longer with  $c < 34.1$  (versus  $\geq 47$ ), more slender with  $c' = 1.1\text{--}1.8$  (versus 0.9), and with subdorsal spinneret opening (versus terminal); and rectum shorter, <21  $\mu\text{m}$  (versus >29  $\mu\text{m}$ ). Thus, we conclude that our specimens are not *M. sessus*.

Despite the absence of records of other species of *Mylonchulus* from other parts of Indonesia, in view of the wide distribution of the genus around the world, there is a good possibility that additional *Mylonchulus* species can be found in the country. Because mononchs are predatory nematodes which can suppress plant-parasitic nematodes (Stirling 2014), this group may be of importance in agriculture. Hence, more inventory of this genus will stimulate and contribute to research on the biological control of crop pests.

## Acknowledgements

We thank Reny Adhani, Siti Aisyah, and Nur Halisah for contributing specimens of nematodes for this study. This work is part of a project financially supported by the Program Dosen Wajib Meneliti Research Grant of Universitas Lambung Mangkurat 2021 (contract number 010.21/UN8.2/PL/2021). We also thank the anonymous reviewer, Olexandr Holovachov, the academic editor, Fernando Carbayo, and the copy editor, Robert Forsyth, for their contributions that improved this work.

## Authors' Contributions

Conceptualization: AG. Data curation: AG, AA. Funding acquisition: AG, AA. Methodology: AG. Project administration: AA. Validation: AA. Visualization: AG. Writing – original draft: AG. Writing – review and editing: AG, AA.

## References

- Ahmad W, Jairajpuri MS (2010) Mononchida: the predatory soil nematodes. Brill, Leiden, the Netherlands, 298 pp.
- Andrassy I (1992) A taxonomic survey of the family Mylonchulidae (Nematoda). Opuscula Zoologica Budapest 25: 11–35.
- Chaves E (1990) Mononchida (Nematoda) from Argentina. Nematologica 36: 181–193. <https://doi.org/10.1163/002925990x00149>
- Farahmand S, Eskandari A, Orselli L, Karegar A (2009) Some known

- species of the genera *Mononchus* Bastian, 1865 and *Mylonchulus* (Cobb, 1916) Altherr, 1953 (Nematoda: Mononchina) from Semnan province, Iran. *Nematologia Mediterranea* 37: 145–154.
- Gafur A (2006) Struktur komunitas nematoda tanah gambut tropis dari Kalimantan Selatan. In: *Prodising Seminar Nasional Biologi*, Universitas Negeri Semarang, Semarang, Indonesia, 78–87.
- Jairajpuri DS (1982) *Mylonchulus sessus* n.sp. (Nematoda: Mononchida) from Brunei. *Systematic Parasitology* 4: 185–187. <https://doi.org/10.1007/bf00019002>
- Jairajpuri MS (1970) Studies on mononchida of India III. The genus *Mylonchulus* (family Mylonchulidae Jairajpuri, 1969). *Nematologica* 16: 434–456. <https://doi.org/10.1163/187529270x00153>
- Jensen HJ, Mulvey RH (1968). Predaceous nematodes (Mononchidae) of Oregon. Oregon State University Press, Corvallis, Oregon, USA, 56 pp.
- Khan WU, Jairajpuri MS (1979) Studies on Mononchida of India. XII. Genus *Mylonchulus* (Cobb, 1916) Altherr, 1953 with descriptions of three new species. *Nematologica* 25: 406–418. <https://doi.org/10.1163/187529279x00578>
- Loof PAA, Barooti S, Kheiri A (1990) Predatory nematodes (Mononchida) from Iran. *Applied Entomology and Phytopathology* 57: 27–36.
- Loof P (2006) Mononchina (Dorylaimida) from western Malaysia. *Nematology* 8: 287–310. <https://doi.org/10.1163/15685410677998737>
- Mulvey RH, Jensen HJ (1967) The Mononchidae of Nigeria. *Canadian Journal of Zoology* 45: 667–727. <https://doi.org/10.1139/z67-084>
- Schneider W (1937) Freilebende Nematoden der Deutschen Limnologischen Sundaexpedition nach Sumatra, Java und Bali. *Archiv für Hydrobiologie, Suppl.* 15: 30–108.
- Seinhorst JW (1959) A rapid method for the transfer of nematodes from fixative to anhydrous glycerin. *Nematologica* 4: 67–69. <https://doi.org/10.1163/187529259x00381>
- Stirling GR (2014) *Biological control of plant-parasitic nematodes* (second edition). CABI Publishing, Wallingford, UK, 510 pp.
- Suatmadji RW, Coomans A, Rashid F, Geraert E, McLaren DA (1988) Nematodes of the Krakatau Archipelago, Indonesia: a preliminary overview. *Philosophical Transactions of the Royal Society B: Biological Sciences* 322: 369–378. <https://doi.org/10.1098/rstb.1988.0132>
- Tahseen Q, Asif M, Mustaqim M, Ahlawat S, Bert W (2013) Descriptions of ten known species of the superfamily Mononchoidea (Mononchida: Nematoda) from North India with a detailed account on their variations. *Zootaxa* 3646: 301–335. <https://doi.org/10.11646/zootaxa.3646.4.1>
- Tsalolikhin S, Yusoff FM, Alekseev V (2012) To the fauna of free-living freshwater nematodes (Nematoda) of North Borneo. *Zoosystematica Rossica* 21: 10–17. <https://doi.org/10.31610/zsr/2012.21.1.10>
- Whitehead AG, Hemming JR (1965) A comparison of some quantitative methods of extracting small vermiform nematodes from soil. *Annals of Applied Biology* 55: 25–38. <https://doi.org/10.1111/j.1744-7348.1965.tb07864.x>

# First records of *Mylonchulus brachyuris* (Bütschli, 1873) (Nematoda, Mononchida, Mylonchulidae) from South Kalimantan, Indonesia

## ORIGINALITY REPORT

10%

SIMILARITY INDEX

7%

INTERNET SOURCES

8%

PUBLICATIONS

1%

STUDENT PAPERS

## PRIMARY SOURCES

- |   |   |    |
|---|---|----|
| 1 | <a href="http://old.amu.ac.in">old.amu.ac.in</a><br>Internet Source   | 2% |
| 2 | <a href="http://ojs.fcla.edu">ojs.fcla.edu</a><br>Internet Source   | 1% |
| 3 | Faruk Akyazi, Onur Yilmaz, Buğra Güvercin. "Morphological and molecular characterization of a new record <i>Pratylenchoides nevadensis</i> Talavera and Tobar, 1996 from wheat in Turkey, and its comparison with other world populations", <i>Journal of Plant Diseases and Protection</i> , 2022<br>Publication | 1% |
| 4 | Wasim Ahmad, Mohammad Shamim Jairajpuri. "Mononchida", Brill, 2010<br>Publication   | 1% |
| 5 | Qi Li, Wenju Liang, Xiaoke Zhang, Mohammad Mahamood. "Nematode Genera and Species Description Along the Transect", Elsevier BV, 2017  | 1% |



6

Ya Nan Yao, Yu Mei Xu, Zeng Qi Zhao, Kerrie A. Davies. " First record of Brzeski, 1963 (Nematoda: Enoplida: Trischistomatidae) from Australia, with description of (Vinciguerra & LA Fauci, 1978) Tsalolikhin, 1983 and Brzeski, 1963 ", Transactions of the Royal Society of South Australia, 2019

Publication

---

<1 %

7

[sasod.org.gy](http://sasod.org.gy)  
Internet Source

<1 %

---

8

Mina Koohkan, Ebrahim Shokoohi, Joaquín Abolafia. " Study of some mononchids (Mononchida) from Iran with a compendium of the genus ", Tropical Zoology, 2014

Publication

---

<1 %

9

R. H. Mulvey. "Predaceous nematodes of the family Mononchidae from the Mackenzie and Porcupine river systems and Somerset Island, N.W.T., Canada", Canadian Journal of Zoology, 1978

Publication

---

<1 %

10

Richard D Bardgett, Angela C Jones, David L Jones, Sarah J Kemmitt, Roger Cook, Phil J Hobbs. "Soil microbial community patterns related to the history and intensity of grazing in sub-montane ecosystems", Soil Biology and Biochemistry, 2001

<1 %

- 
- 11 [krishikosh.egranth.ac.in](http://krishikosh.egranth.ac.in)  
Internet Source <1 %
- 
- 12 [www.gbif.org](http://www.gbif.org)  
Internet Source <1 %
- 
- 13 [www.slideshare.net](http://www.slideshare.net)  
Internet Source <1 %
- 
- 14 [www.plantprotection.pl](http://www.plantprotection.pl)  
Internet Source <1 %
- 
- 15 Fatma Matpan Bekler, Kemal Güven.  
"Isolation and production of thermostable  $\alpha$ -amylase from thermophilic *Anoxybacillus* sp. KP1 from Diyadin hot spring in Ağrı, Turkey",  
*Biologia*, 2014  
Publication <1 %
- 
- 16 M. Shamim Jairajpuri. "Studies On Mononchida of India Iii. the Genus *Mylonchulus* (Family *Mylonchulidae* Jairajpuri, 1969)", *Nematologica*, 1970  
Publication <1 %
- 
- 17 Soheila Shahabi, Ahmad Kheiri, Farshad Rakhshandehroo, Salar Jamali. "Occurrence and distribution of nematodes in rice fields in Guilan province, Iran and the first record of *Mylonchulus polonicus* (Stefanski, 1915) Cobb, 1917 (Nematoda: Mononchina)", *Journal of Plant Protection Research*, 2016 <1 %

18

M. Shamimjairajpuri, M. Farooque Rahman.  
"Two New Species of Mononchida From  
India", Nematologica, 1983

Publication

---

<1 %

19

Pieter Loof. "Mononchina (Dorylaimida) from  
Western Malaysia", Nematology, 2006

Publication

---

<1 %

---

Exclude quotes      Off

Exclude matches      Off

Exclude bibliography      On