

POTENTIAL MAPPING AGRICULTURAL COMMODITIES TO MITIGATION OF FOOD PROBLEM IN THE FUTURE

by Rosalina Kumalawati

Submission date: 06-Jan-2021 04:58PM (UTC+0700)

Submission ID: 1483627512

File name: gtg.334spl05-596.pdf (473.59K)

Word count: 5621

Character count: 32370

POTENTIAL MAPPING AGRICULTURAL COMMODITIES TO MITIGATION OF FOOD PROBLEM IN THE FUTURE

Rosalina KUMALAWATI*

Lambung Mangkurat University, Faculty of Social and Political Sciences, Jl. H. Hassan Basry, Banjarmasin, Indonesia, e-mail: rosalina.kumalawati@ulm.ac.id

SALAMIAH

Lambung Mangkurat University, Faculty of Agriculture, Jl. A. Yani PO Box 1028, Banjarbaru 70714, Indonesia, e-mail: salamiah@ulm.ac.id

Astinana YULIARTI

Lambung Mangkurat University, Faculty of Social and Political Sciences, Jl. H. Hassan Basry, Banjarmasin, Indonesia, e-mail: astinana.yulianti@ulm.ac.id

Karnanto Hendra MURLIAWAN

Ministry of Agrarian & Spatial Plan/National Land Agency, Banjarmasin, South Kalimantan, Indonesia, e-mail: karnanto@yahoo.com

Citation: Kumalawati, R., Salamiah, Yulianti, A., & Murliwani, K.H. (2020). POTENTIAL MAPPING AGRICULTURAL COMMODITIES TO MITIGATION OF FOOD PROBLEM IN THE FUTURE. *GeoJournal of Tourism and Geosites*, 33(4spl), 1480-1485. <https://doi.org/10.30892/gtg.334spl05-596>

Abstract: Catastrophic climate changes that have a negative impact in various fields including agriculture. The research objective is "Potential Mapping Agricultural Commodities to Mitigation of Food Problem in the Future". The research method is quantitative and qualitative. Methods of data collection using field research and literature. The population and the sample is a land unit and village units. Land units determine the suitability of land. The village unit collects socio economic data. The analysis technique used Location Question, Shift Share, Focus Group Discussion and spatial analysis. Spatial analysis using Arc GIS. The findings can be used to mitigate future food problems and analyze policies. The results showed rice plants has S1 class (Very Suitable). Corn, chili, orange and banana land suitability S2 (Suitable), onion is S3 (Marginal Suitable). Priority 1 rice commodity in Ayau Village. Priority 2 Corn in Banua Binjai. Priority 3 that Chili in the village of Awang Besar. Results LQ corn and chili have bases sector, other sectors have the non-base. Shift-share value is negative (-) except Chili. FGD results show developed commodity rice, corn, and chili. The development of leading sectors followed by marketing and processing can increase revenue. Limitations of the research do not examine pests that have the potential to cause crop failure.

Key words: mapping, agricultural, mitigation.

* * * * *

INTRODUCTION

Climate change is a strategic issue and a serious problem in the world, including in Indonesia. Climate change can cause disasters that have a negative impact on food production (Tao and Zhang, 2010; Apriyana, 2011; Las et al., 2011; Mustangin, 2017). The negative impact of long-term climate change to humans and the environment can cause disasters such as extreme droughts, declining yields and food crisis (D'Amico et al., 2006; Behera et al., 2008; Hansen et al., 2011; Cullis et al., 2019; Naim and Hindmarsh, 2019).

Fluctuations in the availability of food is influenced climate variations and weather (Apriyana, 2011). Extreme weather represents one evidence of dangerous climate change and is a signal of future climate change (Haden et al., 2012; Renn, 2011; Spence et al., 2011; Linden, 2014a; McDonald et al., 2015; Demski et al., 2017). Extreme weather can affect the production and productivity of agriculture. The decline in production and productivity can be minimized by planting a variety of plant species. Knowing the potential of a region can cope with crop failures in the region with good harvests in other regions with different commodities.

Mapping the potential in agriculture, especially food crops and the determination of the growing season is an important strategy to do (Naylor et al., 2007; Yayan et al., 2017). The impact of changes in rainfall patterns and seasonal changes cause changes in planting dates (Apriyana and Siburian, 2014). The changes have affected the productivity and food security in each region. Seeing this, it is necessary to map the potential and mitigation of climate change, especially in agriculture. Mapping potential to knowing areas of potential and prospective development, so the government more easily take a strategic development policy. Potential identification can be used to anticipate the product over a particular commodity. Identification of Potential in this case is the identification Potential Land Suitability. Identification of Potential Land Suitability to determine the most suitable land for to be developed in agriculture (Kumalawati et al., 2017). Land Suitability Assessment can be carried out with the parameter of multiplication, addition, or using minimum laws. The minimum law is the match between land quality and land characteristics as parameters with land suitability class criteria based on the growing requirements of the evaluated crop or commodity, such as in agriculture (Zulkarnain and Hartanto, 2020).

Many regions have potential in agriculture but the land suitability of spatial data is not yet available. Land suitability spatial data is necessary because it can be used to select alternative land management so as to create a stable food security and sustainable. Problems with data availability are also experienced in Hulu Sungai Tengah Regency, resulting in inaccurate planning, utilization and development. Overcoming the problem of the availability of spatial data in agriculture can use Geographic Information Systems. Geographic Information System is a combination of database management in collecting and storing geospatial data function describes the relationship of data in the form of maps (Nyerges, 2009). Geographic Information System provides identification information Potential Land Suitability agriculture. Results Identification used as database in the Agricultural Sector Policy Analysis leading commodities include rice, corn, chili, red onions, bananas and oranges. Local development of superior commodities one attempt to compete in trade and improving the local economy (Rosalina et al., 2017; Wahyuningsih et al., 2014). Agriculture development of is needed to improve the quality of agricultural production, income and standard of living people in an area (Luvianita et al., 2017; Mensah and Ekwamu, 2020).

* Corresponding author

The agriculture sector has a significant role in the survival of humanity. The problem of food due to climate change is a global problem, including in the area of research. Predictions of future climate change will occur as a result of the food crisis. The food crisis is an important issue so it is necessary to mitigate and map the suitability of land potential in agriculture. The aim of this research "Potential Mapping Agricultural Commodities to Mitigation of Food Problem in the Future"

MATERIALS AND METHODS

Study area

Climate change is a strategic issue in developed countries and developing countries. Climate change has adverse effects on long-term agricultural field (Tao and Zhang, 2010; Las et al., 2011; Mustangin, 2017). Agriculture is an activity of processing plants and the environment in order to provide food and non-food products (Soetrisno 2006; Sriyanto, 2010). The basic information needed for the development of agriculture is land resource potential of spatial data (BPPP, 2010). Information on the distribution, size, degree of land suitability, the limiting factor, and alternative technologies that can be applied. Land Suitability Assessment can be done by multiplication parameters, summation, or use the minimum law. The minimum law is matching between Land Quality and Land Characteristics as parameters of Land suitability based on plant growth requirements (Djaenudin et al., 2003; Zulkarnain and Hartanto, 2020).

In fact, the information is not yet available land resource as a whole on a sufficient scale. In addition, cooperation between the public, private sector and the government has not been established. Society, and the private sector are government actors at national, regional or local level (Meijerink and Dicke, 2008; Mees et al., 2013). Good cooperation for the collection of spatial data is needed to mitigate climate change especially in agriculture (Termeer et al., 2015). Area of land in agriculture in Barabai, Hulu Sungai Tengah varied. Land area is one of the potential areas that is very important in realizing sustainable land use planning (Budiarta, 2014). The potential of the region needs to be identified that can be planned appropriately to developments in the future. In addition to identification of potential areas, it is also necessary to identify land suitability. Regional potential and suitability of land in agriculture in the long term need to be developed to mitigate the problem of food in the future. The active involvement of the community and the government can reduce the impact of climate change (Tompkins and Eakin, 2012; McNeeley, 2012; Permana and Rahaju, 2020).

Procedures

The success of the mapping and identification of potential mitigation of climate change are expected to be able to anticipate the future of food-related issues (Figure 1).

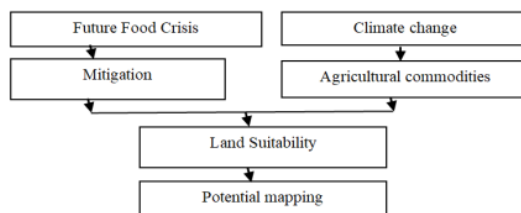


Figure 1. Potential Regional Mapping and Mitigation (Source: Analysis of secondary data and primary data, 2020)

Data analysis

The basis of the research method uses the basic provisions of geography science on the interaction of society and nature, as well as mapping of complex social and natural formations with the help of cartographic models (Nesterchuk et al., 2020). Research used navigational and cartographic hardware and software. The Garmin ETrex Vista was used to obtain coordinate data (Akhmedenov, 2020). The elevation figures were compared and corrected using SRTM.

Methods of data collection using field research and literature. The population and the sample are a land unit and village units. Land units to determine the suitability of land each commodity. Unit villages to collect socio-economic data. Samples were selected and retrieved based on the level of suitability as the sampling frame. The sampling frame is divided into four levels namely S1 (very suitable), S2 (suitable), S3 (marginal suitable), and N (not suitable). Location classification is also included because differences in location result in different sample sizes (Tarin, 2005; Ozdemir, 2000). The research variables are aspects that will be examined in the research (Table 1). The data used are primary data and secondary data. The data collection is done by involving students as enumerators.

Table 1. Variable Research (Source: Analysis of secondary data and primary data, 2020)

No.	Variables	Indicator	Data collection
1.	Mapping the potential of the region	a. Potential Areas, b. Land suitability c.	The questionnaire, laboratory and FGD
2.	Mitigation	Mitigation of Food Problems	FGD
3.	Recommendations commodities priority	a. Results Identification of Potential Areas, b. Results of Land Suitability, c. Results Mitigation of Food Problems d.	FGD

Data analysis using quantitative and qualitative approaches (mix method). The analysis technique used was questionnaire scoring, laboratory analysis and spatial analysis to determine land suitability. Location Question analysis techniques, Shift Share, analysis of the results of the Focus Group Discussion (FGD), and spatial analysis to identify potential areas and mitigate food problems (Figure 2). LQ and shift share analysis to determine the economic growth of the region's comparative (Hood, 1998). LQ is a method based on basic economic theories (Rusastra, 2000). Focuss Group Discussion is a systematic process of collecting data and information on a specific problem that is very specific through group discussions, for example to find out problems in agriculture (Roberts et al., 2020). Spatial analysis using Arc GIS software. MS Excel is used in computer systematization, the raster graphics editor Adobe Photoshop, the vector graphics editor Adobe Illustrator is used when creating maps and developing mapping techniques (Nesterchuk et al., 2020). Mapping Potential Region and Land Suitability obtained from the overlay multiple base maps and map the results of field measurements. Map used is a vector-based maps to display information about the area of agricultural land. The data obtained is displayed in the form of maps, tables and graphs.

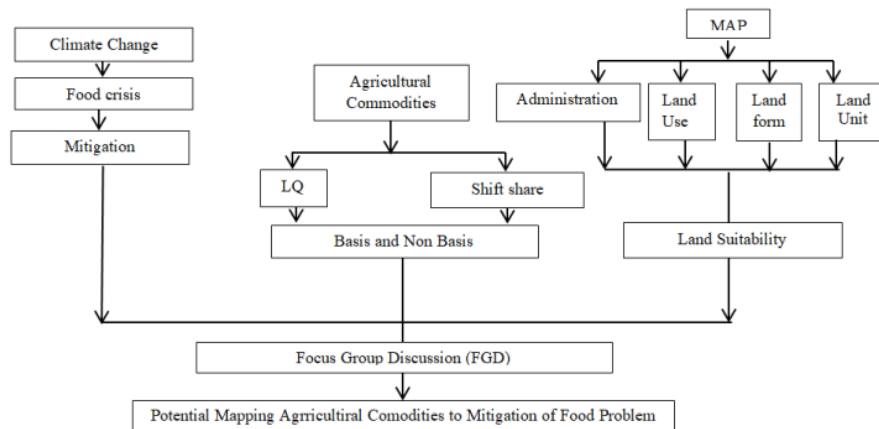


Figure 2. Potential Mapping Agricultural Commodities to Mitigation of Food Problem (Source: Analysis of Secondary Data and Primary Data, 2020)

RESULTS AND DISCUSSION

Result

Agricultural Commodities Research areas include rice, corn, Large Chili, Onions, Oranges and Bananas. Priority commodities are obtained from the land suitability and analysis of the results Soil Laboratory (Table 2 and Figure 3). Laboratory results showed the District has land suitability Barabai S1, S2, S3. Suitability to the rice crop is S1 (Very Suitable). Corn, chili, orange and banana land suitability S2 (Suitable), as well as the onion is S3 (Marginal Suitable). The results of the land suitability analysis support the results of LQ (Table 3). Corn, bananas, oranges, and great chili as having a sector basis suitability S2 class that can be developed in the study area. Main Commodity based results Identifying Potential and Land Suitability in the village Ayuung, Banua Binjai and Awang Besar (Table 4 and Figure 4).

Table 2. Priority of Land Suitability Results in Research Areas (Source: Primary Data Processing, 2020)

No.	Commodity	Village			N
		S1	S2	S3	
1	Rice	Banua Binjai, Ayuung, Pajukungan, Awang Besar, Kayu Bawang, Babai, Bakapas, Banua Jingah, Mandingin, Gambah, Benawa Tengah, Banua Budi, Bukat, Barabai Darat		Barabai Barat, Barabai Selatan, Barabai Timur, Barabai Utara	
2	Corn		Babai, Banua Binjai, Ayuung, Pajukungan, Awang Besar, Gambah, Kayu Bawang, Banua Budi, Banua Jingah, Mandingin	Bakapas, Barabai Barat, Barabai Darat, Barabai Selatan, Barabai Timur, Barabai Utara, Benawa Tengah, Bukat	
3	Large Chili		Awang Besar, Kayu Bawang	Banua Binjai, Ayuung, Bakapas, Babai, Banua Budi, Barabai Barat, Barabai Darat, Barabai Selatan, Barabai Timur, Barabai Utara, Benawa Tengah, Bukat, Gambah, Mandingin, Pajukungan, Banua Jingah.	
4	Red onion			Banua Binjai, Ayuung, Bakapas, Awang Besar, Babai, Banua Budi, Barabai Barat, Barabai Darat, Barabai Selatan, Barabai Timur, Barabai Utara, Benawa Tengah, Bukat, Gambah, Kayu Bawang, Mandingin, Pajukungan, Banua Jingah.	
5	Orange		Kayu Bawang	Banua Binjai, Ayuung, Bakapas, Awang Besar, Babai, Banua Budi, Barabai Barat, Barabai Darat, Barabai Selatan, Barabai Timur, Barabai Utara, Benawa Tengah, Bukat, Gambah, Mandingin, Pajukungan, Banua Jingah.	
6	Banana		Babai, Ayuung, Banua Jingah, Kayu Bawang, Awang Besar	Banua Binjai, Bakapas, Banua Budi, Barabai Barat, Barabai Darat, Barabai Selatan, Barabai Timur, Barabai Utara, Benawa Tengah, Bukat, Gambah, Mandingin, Pajukungan	

Information:

S1 = Very Suitable S3 = Marginal Suitable
 S2 = Suitable N = Not Suitable

Table 3. Main Commodity based results Identifying Potential and Land Suitability in the Research Area (Source: Primary Data Processing, 2020)

No.	Commodities	Priority 1	Priority 2	Priority 3
1	Rice	Babai, Banua Binjai, Ayuung, Pajukungan, Awang Besar, Kayu Bawang	Banua Binjai, Ayuung	Banua Binjai, Ayuung
2	Com		Banua Binjai, Pajukungan, Awang Besar, Kayu Bawang	Pajukungan, Babai
3	Red onion			Banua Binjai
4	Chili		Babai	Awang Besar, Pajukungan
5	Banana			Banua Binjai, Kayu Bawang
6	Orange	Babai		Babai, Awang Besar, Kayu Bawang

Table 4. Pilot Village Main Commodity in the Research Area (Source: Primary Data Processing, 2020)

Priority	P1	P2	P3
Main Commodity	Rice	Corn	Chili
Village	Ayung	Banua Binjai	Awang Besar
LQ	Non-Base	Base	Base
Shift Share	-	-	+
Land Suitability	S1	S2	S2

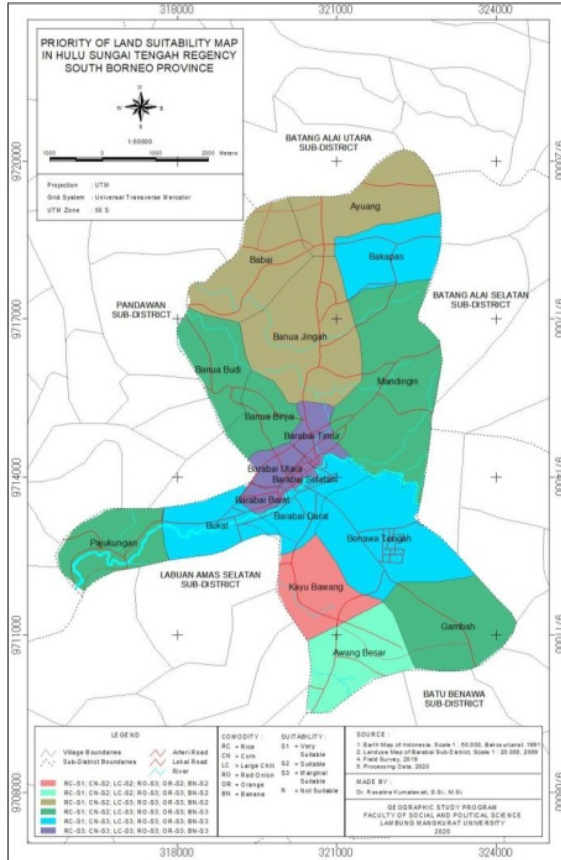


Figure 3. Priority of Land Suitability Map in Hulu Sungai Tengah ReGENCY South Borneo Province (Source: Primary Data Processing, 2020)

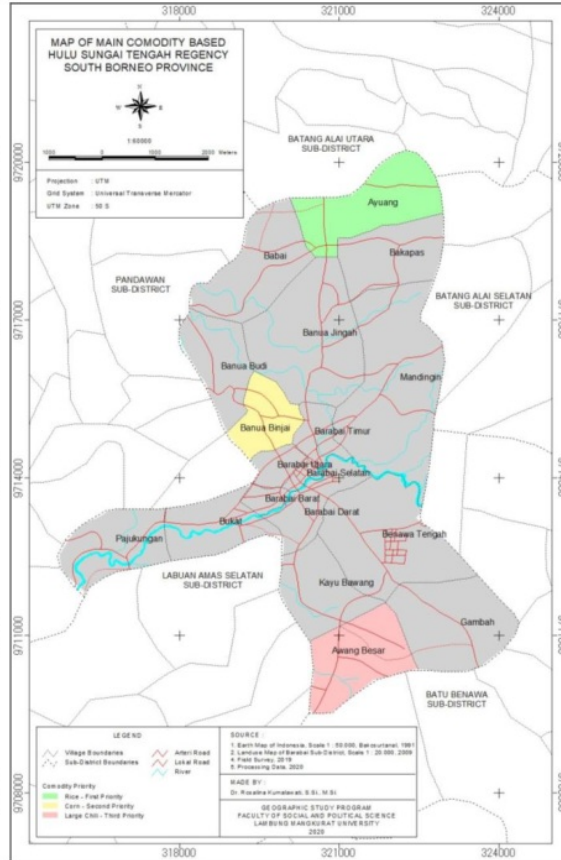


Figure 4. Map on Main Commodity Based Hulu Sungai Tengah ReGENCY Sout Borneo Province (Source: Primary Data Processing, 2020)

DISCUSSION

Priority of Land Suitability Results in Research Areas

Land suitability laboratory results and questionnaire validated with a Focus Group Discussion (FGD). Results obtained validation featured priority for each commodity agriculture in each village. Commodity Priority 1 namely rice, and oranges in the village of Babai, Banua Binjai, Ayung, Pajukungan, Awang Besar, Kayu Bawang. Priority 2, namely rice, corn, and chili in the village of Banua Binjai, Ayung, Pajukungan, Awang Besar, Kayu Bawang and Babai. Priority 3 is the lead all commodities in the village of Banua Binjai, Ayung, Pajukungan, Babai, Kayu Bawang, Babai, and Awang Besar (Table 3).

Main Commodity based results Identifying Potential and Land Suitability in the Research Area

Commodity Priority 1 is Rice Village Ayung become pilot areas. Commodity Priority 2 namely corn in Banua Binjai, commodity Priority 3 that Chili in the village of Awang Besar (Table 4 and Figure 4). Development of agricultural commodities just do not think the type of commodity to be developed but also about marketing and transportation. Marketing requires market economic conditions for all business entities that can be viewed as a socio-economic system (SES) to be competitive (Ginevicius, 2019; Dzurov et al., 2020). Competitiveness can be seen from an economic and psychological point of view (Piotrowska, 2019). Transportation is needed for marketing so that efficiency, level of safety, quantity and quality of services for transportation and cargo, environmental protection need to be considered (Pidgima et al., 2020). Transportation logistics is a factor in realizing the geostrategic potential of an area and determining marketing success (Pohuda et al., 2018). In addition, the processing of commodities should also be developed in order to have more value and increase farmers' income (Kristiawan et al., 2016). Limitations of the study did not examine whether there is a threat in the area of research that could potentially lead to crop failure. The most common pest that appears and is still ignored by farmers is the Parasite Nematoda (PPN) as in the province of East Kalimantan (Suyadi and Rosfiansyah, 2017). Farmers, especially in developing countries are not aware of the existence of PPN (Jones et al. 2013). PPN attack rice plants can cause loss of up to 87%. PPN and Antraknosa can attack the banana plant (Rumahlewang, 2012). Banana losses due to PPN of more than 50% (Bartholomew et al. 2014) or ranging from 30 to 60%

(Brooks, 2008). PPN can also cause yield losses of up to 75% on bananas (Holscher et al., 2014). It is most prevalent in developing countries such as Indonesia due to parasite control efforts are still limited (Chitamba et al., 2013; Kamira et al., 2013; Srinivasan et al., 2011).

Red Onion (*Allium Ascalonicum*) is one of vegetables that have high economic value (Safitri et al., 2019). Spacing should be considered in planting Red Onion (Nugrahini, 2013). Obstacles to plant onions especially outside the growing season of the rainy season the risk of disease and affects production (Kusmiadi et al, 2015). Losses due to disease reaches 24-100% (Udiarto et al, 2005). Disease that often attacks the onions are anthracnose Isnawan, and Mubarak, (2014). 2015 Onion began to be developed in South Kalimantan (Safitri et al., 2019). Seeing this much needed further research on types of pests that can affect the productivity of agriculture commodities in the research area. At this time, research in agriculture has attracted much attention (Fritz and Miller, 2003; Stair et al., 2012; Roberts, 2020). However, with a participatory approach namely through FGD, this research provides a unique insight into how the community can overcome agricultural problems due to climate change. Furthermore, symbolic interactionism (Crotty, 1998) serves to recount the findings that have emerged. Nonetheless, we recommend that future investigations design research studies using a variety of conceptual and theoretical perspectives about agriculture. Perhaps by examining this phenomenon with a bottom up approach and a different set of assumptions, more precise solutions can be found on future agricultural problems. We also point out opportunities for future research and practice related to agriculture, for example regarding the types of pests that affect agricultural productivity.

CONCLUSION

Results showed that corn and chili LQ has a base sector, while other sectors have the non-base. Shift-share value is negative (-) except chili. FGD results indicate the commodities to be developed by the community are rice, corn, and chili. Rice, corn and chili as having a sector basis suitability classes S1 and S2 that can be developed in the research area.

The development of the agricultural sector must be followed by the development of the marketing and processing of commodities so as to increase incomes. Limitations of the study did not see if there was a threat in the area of research that could potentially lead to crop failure. However, further research needs to be done is about the types of pests that can affect productivity.

Acknowledgements

The authors would like to express their sincere gratitude to the Lambung Mangkurat University for supporting this research.

REFERENCES

- Akhmedenov, K.M. (2020). Tourist And Recreational Potential Of The Salt Lakes Of Western Kazakhstan. *GeoJournal of Tourism and Geosites*, 30, 782-787. <https://doi.org/10.30892/gtg.302sp101-505>
- Apriyana, Y. (2011). *Determination of Rice Cropping Calendar based on the ENSO (El Niño Southern Oscillation) and IOD (Indian Ocean Dipole) Phenomena in monsoonal and Equatorial Regions*. [Dissertation]. IPB University, Bogor, Indonesia.
- Apriyana, Y., & Siburian, I.M. (2014). Farmers Strategy, Responding to Climate Variability in Rice Production Centers region of West Java. Proceedings of the National Seminar on Food Sovereignty and Agriculture. *Results of Socio-Economic Research*, Faculty of Agriculture, Gadjah Mada University, Yogyakarta, Indonesia.
- Bartholomew, E. S., Brathwaite, R. A., & Isaac, W. A. P. (2014). Control of root-burrowing nematode (*Radopholus similis*) in banana using extracts of *Azadirachta indica* and *Allium sativum*. *Journal of Organic Systems*, 9(2), 49-55. <http://www.organic-systems.org/>
- Behera S.K, Luo J.J, Yamagata T. (2008): *The IOD Unusual Event of 2007*, Geophysical research letters, 35(14). <https://doi.org/10.1029/2008GL034122>
- Brooks F.E. (2008). Burrowing nematodes. *The Plant Health Instructor* <https://doi.org/10.1094/PHI-I-2008-1020-01>
- Crotty, M. (1998). *The foundations of social research: Meaning and perspective in the research process*. Sage.
- Chitamba J, Manjeru P, Chinheya C.C, Mudada N, & Handiseni M. (2013). Plant-parasitic nematodes associated with banana (*Musa spp.*) In Rusitu Valley, Zimbabwe. [Plant-parasitic nematodes associated with banana (*Musa spp.*) In Rusitu Valley, Zimbabwe]. *Nematropica* 43, 113-118. <https://journals.flvc.org/>
- Cullis, J. D., Horn, A., Rossouw, N., Fisher-Jeffes, L., Kunneke, M. M., & Hoffman, W. (2019). Urbanisation, climate change and its impact on water quality and economic risks in a water scarce and rapidly urbanising catchment: case study of the Berg River catchment. *H2Open Journal*, 2(1), 146-167. <https://doi.org/10.2166/h2oj.2019.027>
- Djaenudin, D., Marwan H., Subagyo H., & A. Hidayat. (2003). *Technical Guidelines for Agricultural Commodities. First Edition 2003*. Soil Research Institute. Research and Development Center for Soil and Agro-climate. Bogor, Indonesia, ISBN 979-9474-25-6.
- Dzurov Vargová, T., Gallo, P., Švedová, M., Litavcová, E., & Košíková, M. (2020). Non-Traditional Forms of Tourism in Slovakia as a Concept of Competitiveness. *GeoJournal of Tourism and Geosites*, 30(2sp1), 801-807. <https://doi.org/10.30892/gtg.302sp104-508>
- D'Arrijo, R., Wilson, R., Palmer, J., Krusic, P., Curtis, A., Sakulich, J., Bijaksana, S., & Ngoimani, L.O. (2006). Monsoon drought over Java, Indonesia, during the past two centuries. *Geophysical Research Letters*, 33(4). <https://doi.org/10.1029/2005GL025465>
- Demski, C., Capstick, S.B, Pidgeon, N.F, Sposato, R.G, & Spence, A., (2017). Experience of extreme weather a ff ECTS climate change mitigation and adaptation responses. *Climate Change* 140, 149-164. <https://doi.org/10.1007/s10584-016-1837-4>
- Fritz, C.A., & Miller, G.S. (2003). Concerns expressed by student teachers in agriculture. *Journal of Agricultural Education*, 44(3), 47-53. <https://doi.org/10.5032/jae.2003.03047>
- Ginevicius, R. (2019). Quantitative assessment of the compatibility of the development of socioeconomic systems. *Journal of Competitiveness*, 11(2), 36. <https://doi.org/10.7441/joc.2019.02.03>
- Haden, V.R, Niles, M.T, Lubell, M., Perlman, J., & Jackson, L.E. (2012). Global and local concerns: what attitudes and beliefs motivate farmers to mitigate and adapt to climate change? *PLoS One* 7. <https://doi.org/10.1371/journal.pone.0052882>. e52882
- Hansen, J.W., Mason, S.J., Sun, L., & Tall, A. (2011). Review of seasonal climate forecasting for agriculture in sub-Saharan Africa. <https://doi.org/10.7916/d8-hhxx-1m98>
- Hood, R. (1998). *Economic Analysis: A Primer Location Quotient, Principal*, Sun Region Associates, Inc.
- Hölscher, D., Dhakshinamoorthy, S., Alexandrov, T., Becker, M., Bretschneider, T., Buerkert, A., Crecelius, A., Wael, D., Elsen, A., Heckel, D.G., Heklau, H., Hertweck, C., Kai, M., Knop, K., Krafft, C., Maddula, R.K., Matthaus, C., Popp, J., Schneider, B., Schubert, U.S., Sikora, R.A., Svatos, A., & Swennen, R.L. (2014). Phenalenone-type phytoalexins mediate resistance of banana plants (*Musa spp.*) to the burrowing nematode *Radopholus similis*. *Proceedings of the National Academy of Sciences*, 111(1), 105-110. <https://doi.org/10.1073/pnas.1314168110>
- Jones, J.T., Haegeman, A., Danchin, E.G.J, Gaur, H.S, Helder, J., Jones, M.G.K., Kikuchi, T., Manzanilla-Lopez, R., Palomares-Rius, J.E, Wesemael, W.M.L., & Perry, R.N. (2013) Top 10 plant-parasitic nematodes in molecular plant pathology. *Mol Plant Pathol*, 14, 946-961. <https://doi.org/10.1111/mpp.12057>
- Khamid, M.B.R., Kurniawati, A., & Kasutjaniangati, K. (2016). Pengaruh Pemberongsongan terhadap Kualitas serta Tingkat Serangan Hama Penyakit Buah Pisang Tanduk (*Musa paradisiaca* var [The Influence of Gathering on the Quality and Level of Attack of Horn Banana Fruit]). *Typica, AAB Group. Journal Agrotek Indonesia*, 1(2). <https://docplayer.info/48685911-Jurnal-agrotek-indonesia-1-2-2016-issn.html>
- Kristiawan, N., Hanani A.R., Soemarno, & Tyasmoro, S.Y. (2016). Leading Product Development of Fruits Using Location Quotient in Tuban Regency. *IOSR Journal of Agriculture and Veterinary Science (IOSR-JAVS)*, 9(8), 81-84. <https://doi.org/10.9790/2380-0908018184>
- Kumalawati, R., Arisanty, D., Krisdiyanto, M., & Salamiah, M. (2017). Potency of Agriculture Commodity in Haruyan, Hulu Sungai Tengah Regency. In *1st International Conference on Social Sciences Education-Multicultural Transformation in Education, Social Sciences and Wetland Environment (ICSSSE 2017)*, Atlantis Press. <https://dx.doi.org/10.2991/icssse-17.2018.63>
- Las, I., Pramudia, A., Runtuwuu, E., & Setyanto, P. (2011). Anticipation of climate change in security national rice production. *J Agric Innov Dev*, 4(1), 76-86.
- Luvianita, A.A. (2017). *Analysis of Agriculture Commodities by Method Location Quotient in Karanganyar Year 2014-2016*. Geography Faculty. Surakarta: Muhammadiyah Universities Surakarta.
- McDonald, R. I., Chai, H. Y., & Newell, B. R. (2015). Personal experience and the 'psychological distance' of climate change: An integrative review. *Journal of Environmental Psychology*, 44, 109-118. <https://doi.org/10.1016/j.jenvp.2015.10.003>

- McNeeley, S.M. (2012). Examining barriers and opportunities for sustainable adaptation to climate change in Interior Alaska. *Climatic Change*, 111(3-4), 835-857. <https://doi.org/10.1007/s10584-011-0158-x>
- Mensah, S., & Ekwamu, A. (2020). Agricultural production, food nutrition and capacity building in higher education in Africa. *African Journal of Rural Development*, 4(4). <http://www.afjrd.org/jos/index.php/afjrd/article/view/2133>
- Mees, H.L., Driessen, P.P., Runhaar, H.A., & Stamatelos, J. (2013). Who governs climate adaptation? Getting green roofs for stormwater retention off the ground. *Journal of Environmental Planning and Management*, 56(6), 802-825. <https://doi.org/10.1080/09640568.2012.706600>
- Meijerink, S., & Dicke, W. (2008). Shifts in the public-private divide in flood management. *International Journal of Water Resources Development*, 24(4), 499-512. <https://doi.org/10.1080/07900620801921363>
- Naim, M., & Hindmarsh, R. (2019). Traditional-Contemporary'community Engagement Approaches for Effective Local Climate Change Adaptation in Indonesia. *Ecolab*, 13(1), 39-59. <https://doi.org/10.20886/eklab.2019.13.1.39-59>
- Naylor, R.L., Battisti, D.S., Vimont, D.J., Falcon, W.P., & Burke, M.B. (2007). Assessing risks of climate variability and climate change for Indonesian rice agriculture. *Proceedings of the National Academy of Sciences*, 104(19), 7752-7757. <https://doi.org/10.1073/pnas.0701825104>
- Nesterchuk, I., Osipchuk, A., Chernyshova, T., Shevchuk, B., & Bondarenko, E. (2020). Ethnic loading of food as a sustainable culture component in the form of physical-geographical, soil and ethnographic zoning of the Right-Bank Polissia. *GeoJournal of Tourism and Geosites*, 30(2spl), 788-793. <https://doi.org/10.30892/gtg.302spl02-506>
- Nugrahini, T. (2013). Respon tanaman bawang merah (*Allium ascalonicum* L.) varietas Tuk Tuk terhadap pengaturan jarak tanam dan konsentrasi pupuk organik cair nasa [The response of the shallot (*Allium ascalonicum* L.) Tuk Tuk variety to the spacing and concentration of nasa liquid organic fertilizer]. *Ziraa'ah Majalah Ilmiah Pertanian*, 36(1), 60-65. <http://dx.doi.org/10.31602/zmp.v36i1.27>
- Nyerges, T. (2009). *GIS and Society*. University of Washington. Seattle, WA, USA.
- Ozdemir, O. (2000). *Risk Management Decisions in Low Loss and High Probability Risk Situations: Experimental Evidence*. Ankara: Department of Business Administration, Turkey.
- Pidgirna, V., & Filipchuk, N. (2020). Development Of The Tourist Services Market In Ukraine Under Conditions Of Transformation Changes. *GeoJournal of Tourism and Geosites*, 30 (2spl), 794-800. <https://doi.org/10.30892/gtg.302spl03-507>
- Piotrowska, M. (2019). Facets of competitiveness in improving the professional skills. *Journal of Competitiveness*, 11(2), 95. <https://doi.org/10.7441/joc.2019.02.07>
- Pohuda, N., & Rozmetova, O. (2018). Current status of the tourist market of Ukraine: evaluation and prospects of development. *Effective Economy, Electronic Professional Edition*, 10, 10-24.
- Renn, O. (2011). The social amplification / attenuation of risk framework: application to climate change. *Wiley Interdiscip. Rev. Climate Change*, 2, 154-169. <https://doi.org/10.1002/wcc.99>
- Roberts, R., Stair, K.S., & Granberry, T. (2020). Images from the Trenches: A Visual Narrative of the Concerns of Agricultural Education Majors. *Journal of Agricultural Education*, 61(2), 324-338. <https://doi.org/10.5032/jae.2020.02324>
- Rumahlewang, W., & Amanupunyo, H.R. (2018). Patogenisitas *Colletotrichum musae* Penyebab Penyakit Antraknosa Pada Beberapa Varietas Buah Pisang. *Agrologia*, 1(1). <http://dx.doi.org/10.30598/a.v1i1.30>
- Rusastra, I.W.P., Simatupang., & Rachman, B. (2000). *Rural Economic Development based on agribusiness*, Center for Research and Socio-Economic Development of Agriculture.
- Safitri, Y.A., Hasanah, U., Salamiah, S., Samharinto, S., & Pramudi, M.I. (2019). Distribution of major diseases of shallot in South Kalimantan, Indonesia. *Asian Journal of Agriculture*, 3(02). <https://doi.org/10.13057/asianjagric/g030201>
- Soetrisno. (2006). *Introduction of Agricultural Sciences Agriculture, Agribusiness, and Industry*. Malang, Bayumedia Publishing.
- Spence, A., Poortinga, W., Butler, C., & Pidgeon, N.F. (2011). Perceptions of climate change and willingness to save energy related to flood experience. *Nat. Climate Change*, 1, 46-49. <https://doi.org/10.1038/nclimate1059>
- Srinivasan, R., Kulothungan, S., Sundararaju, P., & Govindasamy, C. (2011). Biodiversity of plant parasitic nematodes associated with banana in Thanjavur district of Tamil Nadu. *International Journal of Plant, Animal and Environmental Sciences*. <http://www.ijpaes.com/>
- Sriyanto, S. (2010). *Harvest Money on Organic Rice Business*. Agro Media, South Jakarta.
- Stair, K.S., Warner, W.J., & Moore, G.E. (2012). Identifying concerns of preservice and in-service teachers in agricultural education. *Journal of Agricultural Education*, 53(2), 153-164. <https://doi.org/10.5032/jae.2012.02153>
- Suyadi, R. (2017). The role of plant parasitic nematodes on productivity reduction of banana and tomato in East Kalimantan, Indonesia. *Asian Journal of Agriculture*. <https://doi.org/10.13057/asianjagric/g010108>
- Tao, F., & Zhang, Z. (2010). Adaptation of maize production to climate change in North China Plain: quantify the relative contributions of adaptation options. *European Journal of Agronomy*, 33(2), 103-116. <https://doi.org/10.1016/j.eja.2010.04.002>
- Tarin, R. (2005). *Regional Planning*. Jakarta, Earth Literacy.
- Termeer, C., van Buuren, A., Knieling, J., & Gottschick, M. (2015). Reconciling collaborative action research with existing institutions: insights from Dutch and German climate knowledge programmes. *Journal of water and climate change*, 6(1), 89-103. <https://doi.org/10.2166/wcc.2014.084>
- Tompkins, E.L., & Eakin, H. (2012). Managing private and public adaptation to climate change. *Global Environmental Change*, 22, 3-11. <http://dx.doi.org/10.1016/j.gloenvcha.2011.09.010>
- Udiarto, B.K., Wiwin, S., & Euis, S. (2005). *Introduction of shallots and Diseases and their control*. PTT Shallots no. 2. Vegetable Crops Research Institute, Bandung, Indonesian.
- Wahyuningsih, T., & Kadir, H.H.A. (2014). Determination of Agricultural Sector and Subsector Potentially Leading and with Superior in District Hie Location Quotientmethod Static, Dynamic Input and Output Location Quotient. <https://doi=10.1.1.663.7357>
- Zulkarnain, Z., & Hartanto, R.N. (2020). Analisis Kesesuaian Lahan Untuk Pertanian Pangan Berkelanjutan Di Kabupaten Mahakam Hulu. *Agrifor*, 19(2), 347-354. <https://doi.org/10.31293/af.v19i2.4809>
- Budiarta, I.G. (2017). Analisis Kemampuan Lahan Untuk Arah Penggunaan Lahan Pada Lereng Timur Laut Gunung Agung Kabupaten Karangasem-Bali. *Land Ability Analysis for Land Use Direction on the Northeast Slope of Mount Agung, Karangasem Regency, Bali*. *Media Komunikasi Geografi*, 15(1). <http://dx.doi.org/10.23887/mkg.v15i1.11420>
- Isnawan, B.H., & Mubarak, K. (2014). Efektifitas Penginduksi Resistensi dan Biopestisida terhadap Penyakit Berecak Daun *Cercospora* dan Antraknosa pada Cabai (*Capsicum annum* L.) [Effectiveness of Biopesticide and Resistance Induction against *Cercospora* Leaf Spot and Anthracnose in Chili (*Capsicum annum* L.)]. *Planta Tropika, Jurnal Agrosains (Journal of Agro Science)*, 2(2), 106-114. <https://doi.org/10.18196/pt.2014.030.106-114>
- Zulkarnain, Z., & Hartanto, R.N. (2020). Analisis Kesesuaian Lahan Untuk Pertanian Pangan Berkelanjutan Di Kabupaten Mahakam Hulu. [Analysis of Land Suitability for Sustainable Food Agriculture in Mahakam Hulu Regency]. *Agrifor*, 19(2), 347-354. <https://doi.org/10.31293/af.v19i2.4809>
- Kamira, M., Hauser, S., Van Asten, P., Coyne, D., & Talwana, H.L. (2013). Plant Parasitic Nematodes Associated with Banana and Plantain in Eastern and Western Democratic Republic of Congo [Nematodos Fitoparásitos Asociados A Los Cultivos De Banano Y Plátano En El Este Y Oeste De La República Democrática Del Congo]. *Nematropica*, 43(2), 216-225.
- Kusmiadi, R., Ona, C., & Saputra, E. (2015). Pengaruh jarak tanam dan waktu penyiangan terhadap pertumbuhan dan produksi bawang merah (*Allium salonicum* L.) pada lahan ultisol di Kabupaten Bangka. [Effect of spacing and time of weeding on growth and production of shallots (*Allium salonicum* L.) on ultisol land in Bangka Regency]. *Enviagro, Jurnal Pertanian dan Lingkungan*, 8(2), 63-71. <https://www.journal.ubb.ac.id/index.php/enviagro/article/view/320/294>
- Mustangin, M. (2017). Perubahan iklim dan aksi menghadapi dampaknya: Ditinjau dari peran serta perempuan Desa Pagerwangi. JPPM (Jurnal Pendidikan dan Pemberdayaan Masyarakat) [Climate change and action to face its impact: Viewed from the participation of women in Pagerwangi Village. *Journal of Community Education and Empowerment*, 4(1), 80-89. <https://doi.org/10.21831/jppm.v4i1.13051>
- Permana Santoso, A.L.D.I., & Rahaju, T. (2020). Dampak Program Kampung Iklim (Proklim) di Rukun Warga (RW) 03 Kelurahan Jambangan Kota Surabaya. Impact of Kampung Iklim (Proklim) Program on Rukun Warga (RW) 03 Surabaya City Jambangan. *Publika*, 8(1).
- *** BPPP (Agency for Agricultural Research and Development). (2010). *Analysis of Land Resources Sustainable Food Security menuju*. Agency for Agricultural Research and Development, Jakarta.

POTENTIAL MAPPING AGRICULTURAL COMMODITIES TO MITIGATION OF FOOD PROBLEM IN THE FUTURE

ORIGINALITY REPORT

10%

SIMILARITY INDEX

8%

INTERNET SOURCES

1%

PUBLICATIONS

0%

STUDENT PAPERS

PRIMARY SOURCES

1

www.atlantis-press.com

Internet Source

5%

2

id.wiktionary.org

Internet Source

3%

3

Nasruddin, R Kumalawati, Syaharuddin, A Yuliarti, I Rajiani. "Community Participation in the Village Climate Program to Anticipate Future Climate Change in Wetlands", IOP Conference Series: Earth and Environmental Science, 2020

Publication

1%

4

gtg.webhost.uoradea.ro

Internet Source

1%

Exclude quotes On

Exclude bibliography On

Exclude matches < 1%